



Weston Commerce Center

1625 N. COMMERCE PARKWAY

WESTON, FL 33326



Contact Us: 954.903.3900



Greg Martin
Principal
greg.martin@avisonyoung.com



Justin Cope
Vice President
justin.cope@avisonyoung.com



Lisa Hernandez
Associate
lisa.hernandez@avisonyoung.com



Weston Commerce Center

1625 N. COMMERCE PARKWAY
WESTON, FL 33326

PROPERTY HIGHLIGHTS

- 33,651 sf, three-story office building
- Numerous building improvements completed in 2012-2013
- Parking ratio 4.0/1,000 sf
- Convenient Broward County location
- Suites have private restrooms and are separately metered for electric
- Parking Ratio 4/1,000 sf
- Located in the Weston Park of Commerce
- Walking distance to hotels, restaurants, shopping and banking
- 25 minutes to Fort Lauderdale/Hollywood International Airport

AVAILABLE SUITES

Suite 325: 2,515 sf

Suite 305: 896 sf

RENTAL RATE: \$20.00 NNN

OPERATING EXPENSES: \$8.71

NET OF ELECTRIC & JANITORIAL

For more Information, Contact:

954.903.3900

Greg Martin

Greg.Martin@avisonyoung.com

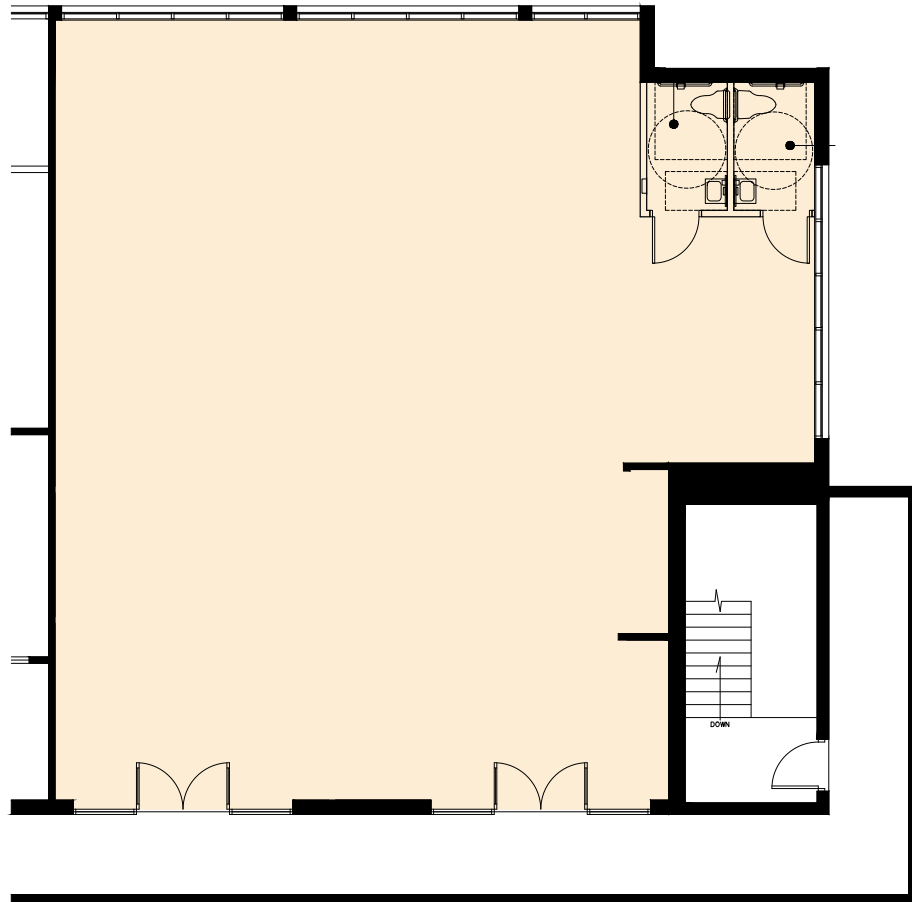
Justin Cope

Justin.Cope@avisonyoung.com

Lisa Hernandez

Lisa.Hernandez@avisonyoung.com

SUITE 325 - 2,515 sf



For more Information, Contact:

954.903.3900

Greg Martin

Greg.Martin@avisonyoung.com

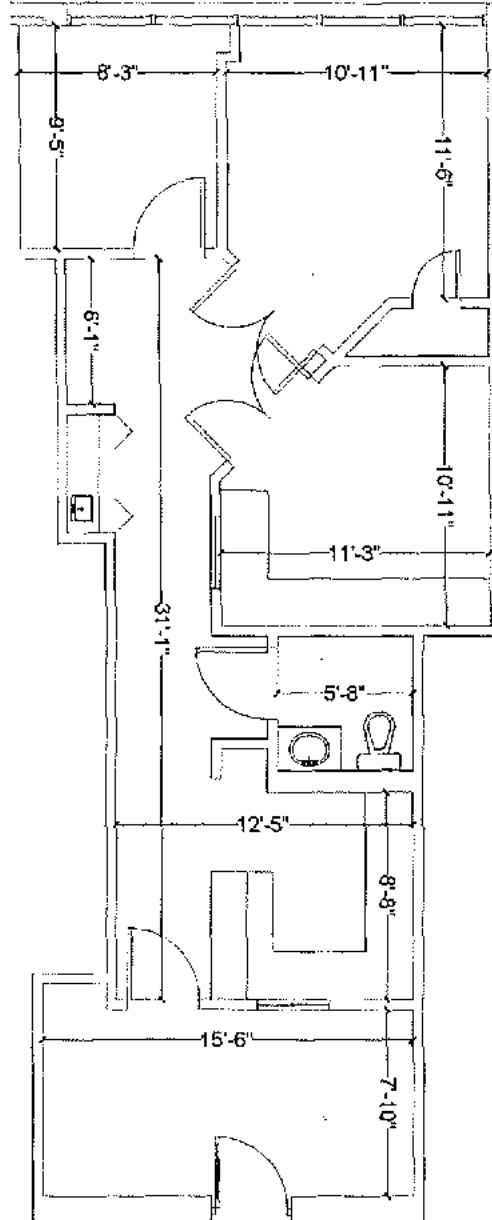
Justin Cope

Justin.Cope@avisonyoung.com

Lisa Hernandez

Lisa.Hernandez@avisonyoung.com

SUITE 305 - 896 sf



For more Information, Contact:

954.903.3900

Greg Martin

Greg.Martin@avisonyoung.com

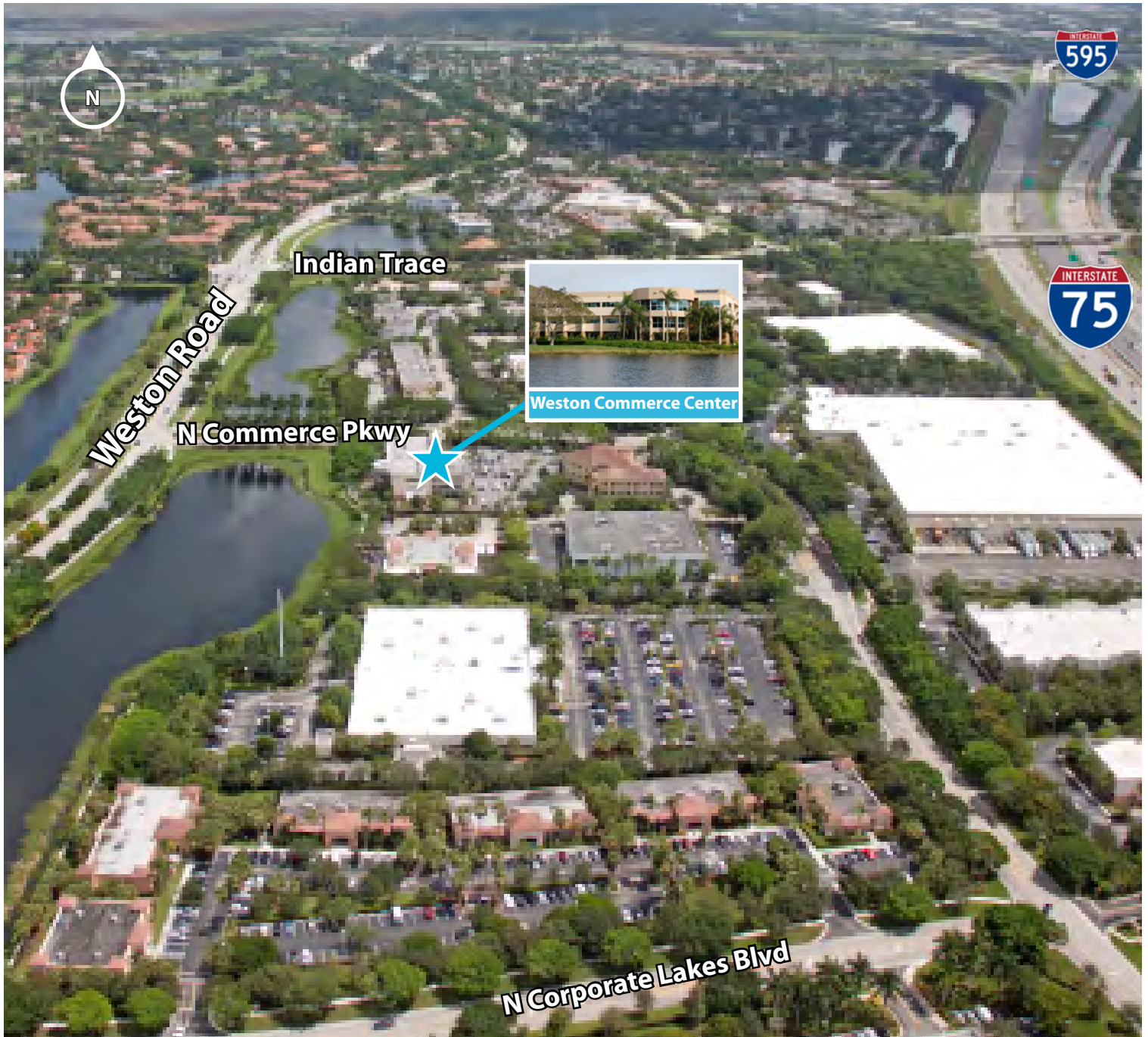
Justin Cope

Justin.Cope@avisonyoung.com

Lisa Hernandez

Lisa.Hernandez@avisonyoung.com

PROPERTY LOCATION



For more Information, Contact:

954.903.3900

Greg Martin

Greg.Martin@avisonyoung.com

Justin Cope

Justin.Cope@avisonyoung.com

Lisa Hernandez

Lisa.Hernandez@avisonyoung.com