



**5270 Shawnee Road
Alexandria, Virginia**

- **6,500 SF available at \$24 PSF**
- **New, fully built-out, modern open plan with numerous collaborative areas**
- **Brick wall and polished concrete floor finishes; granite bathroom and lobby finishes**
- **Bright space with 7' windows**
- **Access to pop up restaurants**

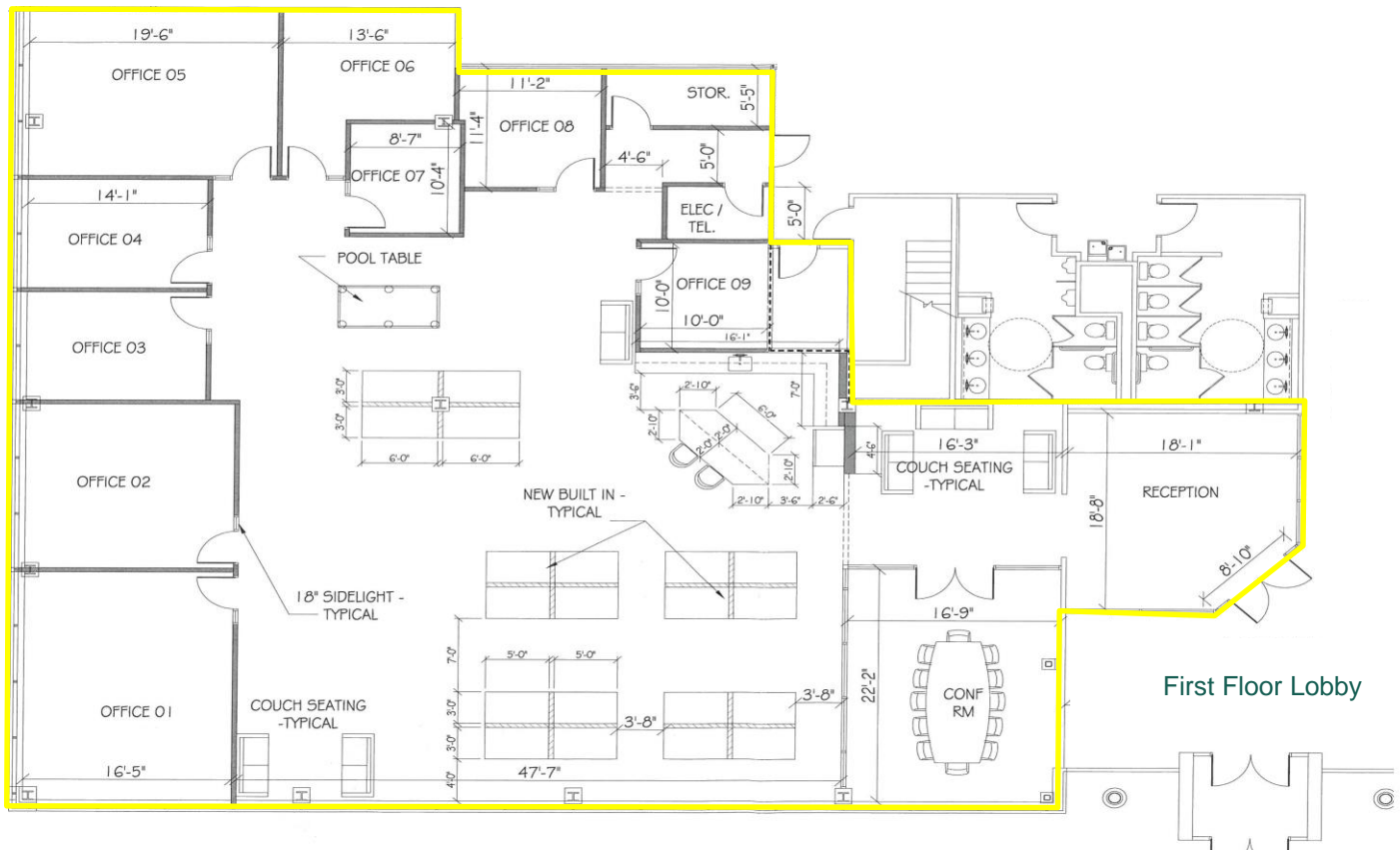


Tom Cafferty (703) 448 0121
TDCafferty@caffertycommercial.com

Lauren C. Mahaffey (703) 915 9444
LCafferty@caffertycommercial.com



Adjoining Walking Trail



- **32' X 35' column spacing**
- **168 parking spaces / 4.5 per 1,000 SF**
- **Responsive property management provided by owner**
- **5 acre parkland and trail with streams steps outside of space**
- **Loading dock with leveler**
- **Access to I-395/I-495 - minutes from DC, the Pentagon and Crystal City**