



### Property Highlights:

- ±16,778 Total SF
- Part of a Nine (9) Unit Industrial Center
- Zoning: GID, City of Tempe
- Grade Level Loading Doors
- Clear Height: 14'
- 3.16 per 1,000 SF Parking
- 1/4 Mile to Loop 101 and Loop 202
- 1.5 Miles from Arizona State University
- 3 phase, 120/208 volt, 200 amps
- Excellent Street Exposure

#### Unit 507

1,615 SF 15% AC Office  
80% Evap Warehouse

#### Unit 509

1,820 SF 15% AC Office  
80% Evap Warehouse

#### Unit 511

1,204 SF 100% AC

#### Unit 517

1,680 SF 100% AC

*\*Call for lease rate*

#### Paul E. Boyle

Executive Director  
+1 602 224 4414  
paul.boyle@cushwake.com

#### Rick Danis

Executive Director  
+1 602 224 4405  
rick.danis@cushwake.com

2555 E. Camelback Rd, Suite 400  
Phoenix, Arizona 85016

ph:+1 602 954 9000  
fx:+1 602 253 0528

cushmanwakefield.com



# Available for Lease - University Business Park

501 - 519 S. Rockford Drive | Tempe, Arizona

**Unit 507—1,615 sf**

- 15% A/C Reception & Office
- 85% Evap Warehouse
- 1 RR

**Unit 509—1,820 sf**

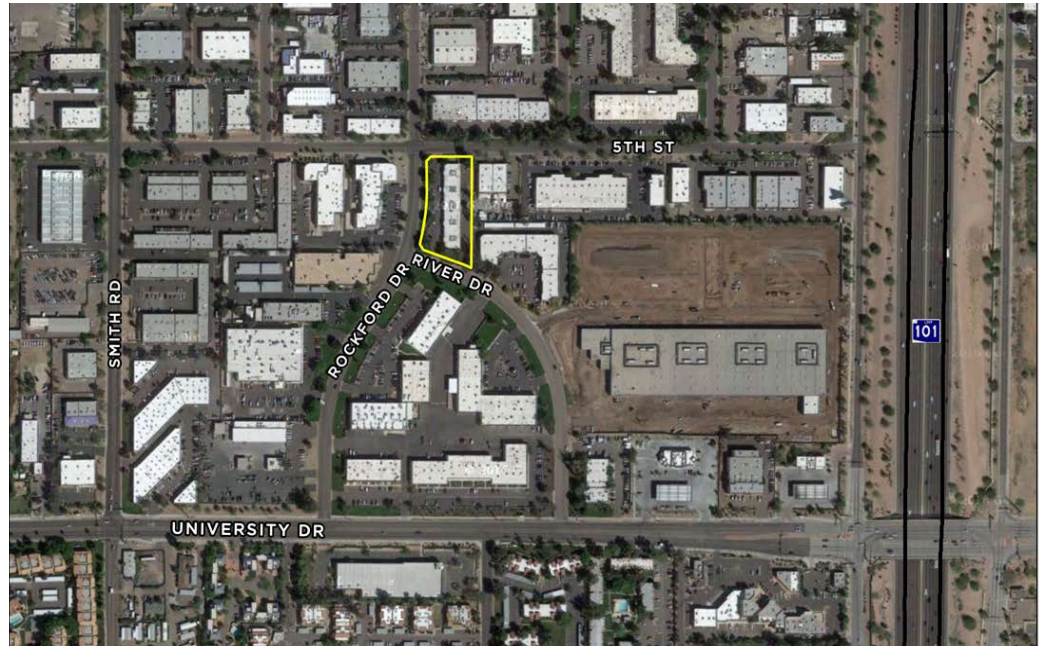
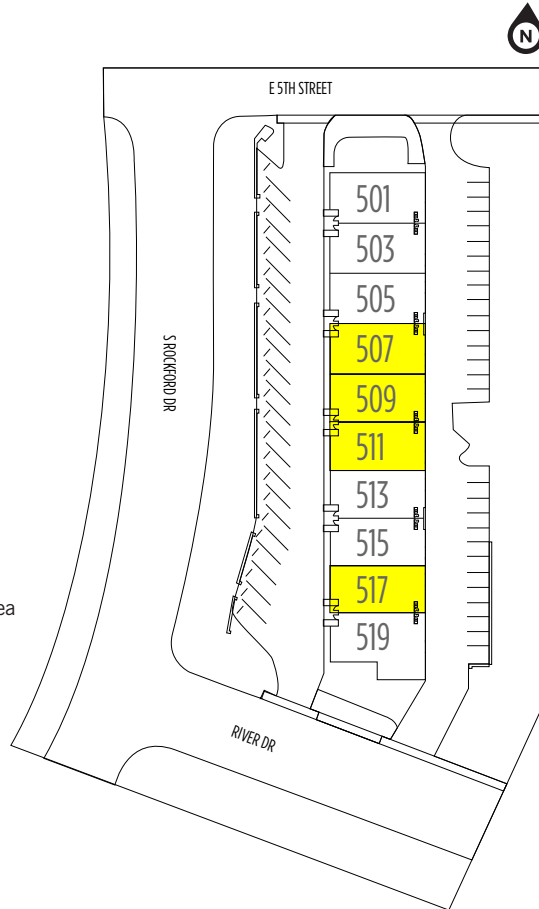
- 15% A/C Reception & Office
- 85% Evap Warehouse
- 1 RR

**Unit 511—1,204 sf**

- 100% A/C
- Foyer Entrance Area
- 3 Offices
- 1 Bullpen Area
- 1 RR
- 1/3 Warehouse Area/Production Area

**Unit 517—1,680 sf**

- 100% A/C
- 1 Reception Area
- 3 Offices
- 2 RR
- 1/3 Warehouse/Production Area



**Paul E. Boyle**  
 Executive Director  
 +1 602 224 4414  
 Paul.Boyle@cushwake.com

**Rick Danis**  
 Executive Director  
 +1 602 224 4405  
 Rick.Danis@cushwake.com

2555 E. Camelback Rd, Suite 400  
 Phoenix, Arizona 85016  
 ph:+1 602 954 9000  
 fx:+1 602 253 0528  
 cushmanwakefield.com