

For Lease

Retail Property

2,300 SF | \$19.00 SF/yr



122 Magnolia Street

Spartanburg, South Carolina 29306

Property Highlights

- Excellent location in downtown Spartanburg
- New streetscape
- 2,300 SF available on the ground floor
- Storefront entrance on Magnolia Street and Spring Street
- Nearby retailers include Olive and Then Some, The Flat, Miyako Sushi, new 142 Social

Demographics

| | 1 Mile | 3 Miles | 5 Miles |
|-------------------|----------|----------|----------|
| Total Households | 2,628 | 17,066 | 34,676 |
| Total Population | 7,729 | 45,734 | 91,793 |
| Average HH Income | \$45,061 | \$45,731 | \$50,570 |

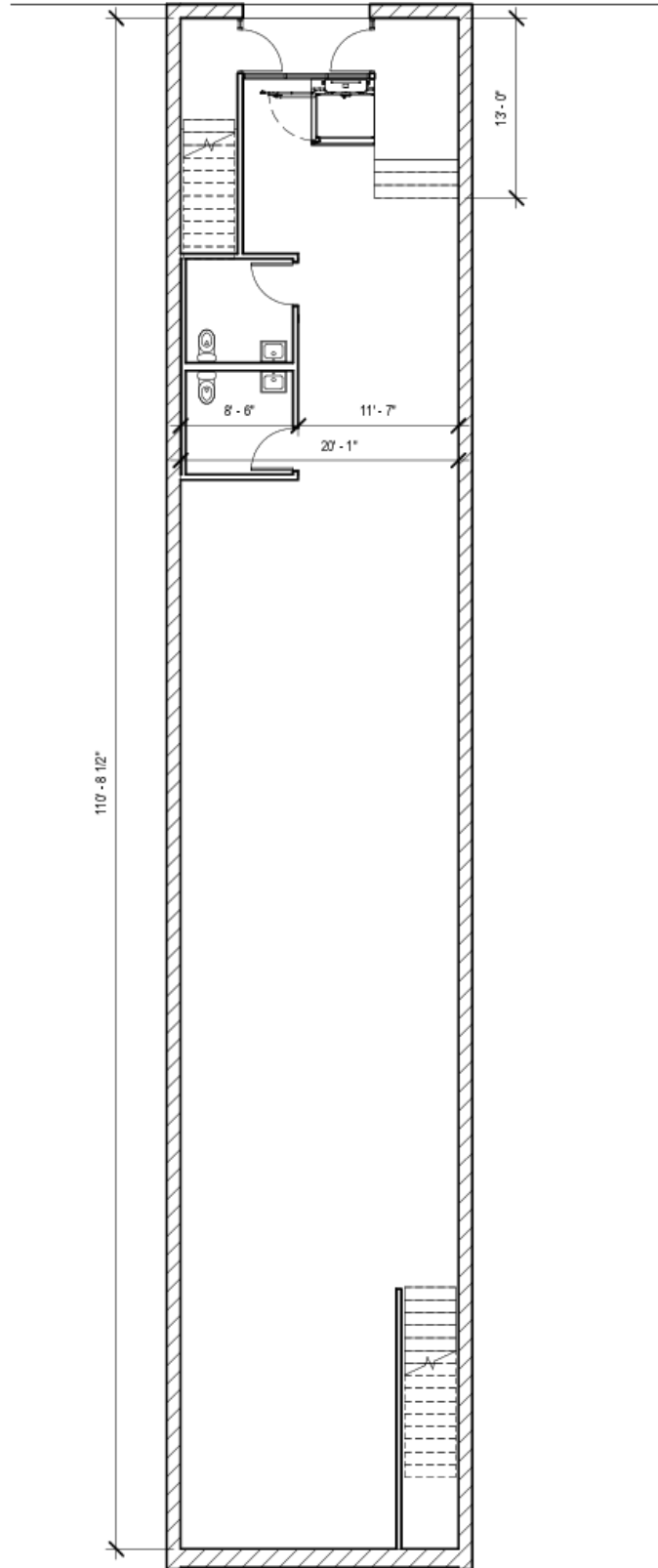


For more information

Andrew Babb

O: 864 398 4444 | C: 864 316 9488
ababb@naiearlefurman.com

Floor Plan



Lower level