



# YOUR SCRIPPS RANCH NEIGHBORHOOD CENTER

FOR LEASE

±830 SF & ±1,000 SF RETAIL SPACE

10555-10785 SCRIPPS POWAY PARKWAY | SAN DIEGO, CA  
<http://scrippsranchmarketplace.com/>

JOIN THESE  
TENANTS



MIKE MOSER | Lic.# 00977876 | 858.523.2089 | [mikemoser@retailinsite.net](mailto:mikemoser@retailinsite.net)

MAYA GRIM | Lic.# 01273486 | 858.523.2094 | [mgrim@retailinsite.net](mailto:mgrim@retailinsite.net)



RETAIL  
INSITE  
COMMERCIAL REAL ESTATE

Regency  
Centers.

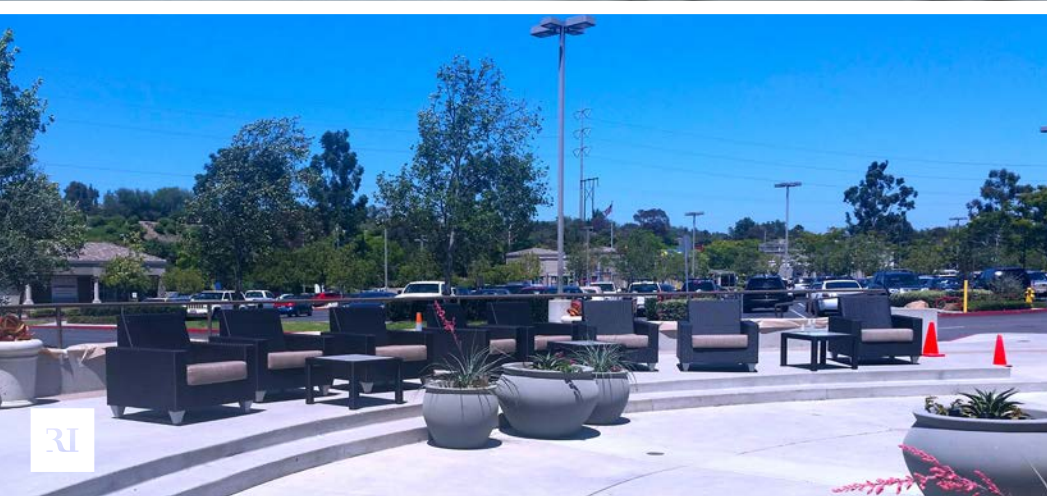




# PROPERTY HIGHLIGHTS

• • •

- Vons & CVS anchored
- Dominant neighborhood center in the trade area
- Easy access to Interstate 15
- Great mix of Food, Service & Daily Needs Retailers
- Enhanced community gathering plaza





Scripps Ranch Marketplace is located within the master planned community of Scripps Ranch surrounded by affluent housing and a strong daytime population with a  $\pm$  584,000 SF Scripps Northgate Corporate Center located directly across the street. The Scripps Ranch submarket contains over 3.6 million SF of office and industrial space.



## TRAFFIC COUNT



SCRIPPS POWAY PARKWAY:  $\pm$  44,500 average vehicles per day

INTERSTATE 15:  $\pm$  244,000 average vehicles per day

## DEMOGRAPHICS



2019	1 MILE	3 MILES	5 MILES
Estimated Population	22,063	149,224	246,766
Average Household Income	\$141,779	\$143,689	\$149,054
Estimated Daytime Population	16,761	108,039	246,616



LAKE MIRAMAR



Proposed 22-Unit  
Luxury Apartment



The UPS Store  
HAPPY NAILS  
HS Salon



AVAILABLE  
1,000 SF

AVAILABLE  
830 SF



SPRING CANYON ROAD

SCRIPPS POWAY PKWY





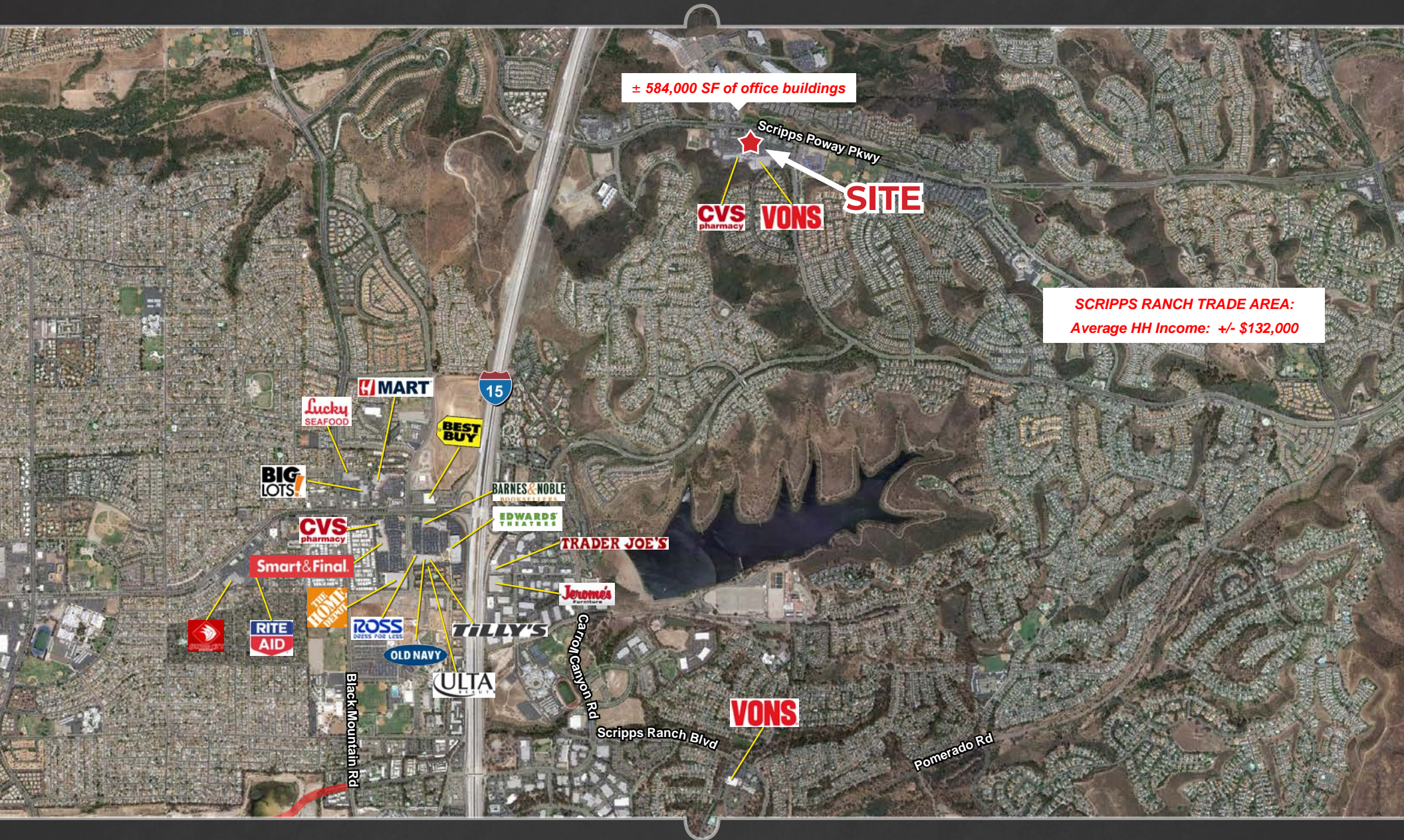


SUITE	TENANT	SF
10393-A	Mission Federal CU	±2,800 SF
10393-B	Public 131	±2,800 SF
10555	Mobil Oil	3,600 SF
10565	Taco Bell	2,904 SF
10575	CVS	16,853 SF
10585		
Suite A	AVAILABLE	1,000 SF
Suite B	Colony Cleaners	1,000 SF
Suite C	Anderson Chiropractic	1,000 SF
Suite D&E	Luna Grill	±2,400 SF
10605		
Suite A	California Bank and Trust	3,500 SF
Suites B&C	Ximed Urgent Care	2,000 SF
10625		
Suite A	Pressed Juicery	1,200 SF
Suite B	Bruegger's Bagels	1,600 SF
Suite C	AVAILABLE	830 SF
Suite D	Lease Pending	3,270 SF

SUITE	TENANT	SF
10655	McDonald's	4,000 SF
10675	Vons	56,825 SF
10715	El Pollo Loco	2,540 SF
10755		
Suite A	HS Salon	1,200 SF
Suite B	Coast Premier Properties	1,080 SF
Suite C	Happy Nails	1,532 SF
Suite D	UPS Store	1,592 SF
Suite F, G	Massage Green	1,874 SF
Suite H	Tae Kwon Do USA	1,976 SF
Suite I	Nutmeg Café	2,350 SF
Suite K	Dr. Gregory Friedman, DM	2,100 SF
Suite L	Scripps Ranch Veterinary	2,400 SF
10785		
Suite A	Sammy's Woodfinre Pizza & Grill	3,409 SF
Suite B	Rubio's Restaurant	2,000 SF



# RETAIL PROJECTS IN 15 CORRIDOR







AVAILABLE - 830 SF

**MIKE MOSER**

Lic.# 00977876  
858.523.2089  
mikemoser@retailinsite.net

**MAYA GRIM**

Lic.# 01273486  
858.523.2094  
mgrim@retailinsite.net



**RETAIL  
INSITE**  
COMMERCIAL REAL ESTATE

