



635

BRYANT STREET


PALO ALTO, CALIFORNIA



CHERIE WITTRY 650.688.8523 cwittry@ngkf.com CA RE License #00863251
JOHN MCKENNA 650.688.8548 jmckenna@ngkf.com CA RE License #01276576

245 Lytton Avenue, Suite 150, Palo Alto, CA 94301

The distributor of this communication is performing acts for which a real estate license is required. The information contained herein has been obtained from sources deemed reliable but has not been verified and no guarantee, warranty or representation, either express or implied, is made with respect to such information. Terms of sale or lease and availability are subject to change or withdrawal without notice. 20-0499_05/20



- » Beautiful Historic Office Building

- » Available Now: Three Office Suites - Located on First and Second Floors

- » Common Area Amenities: Reception, Conference Room, Kitchen and Restrooms with Shower

- » High End Finishes

- » Located in the Heart of Downtown Palo Alto

- » Across the Street from Civic Center Public/Permit Parking Garage

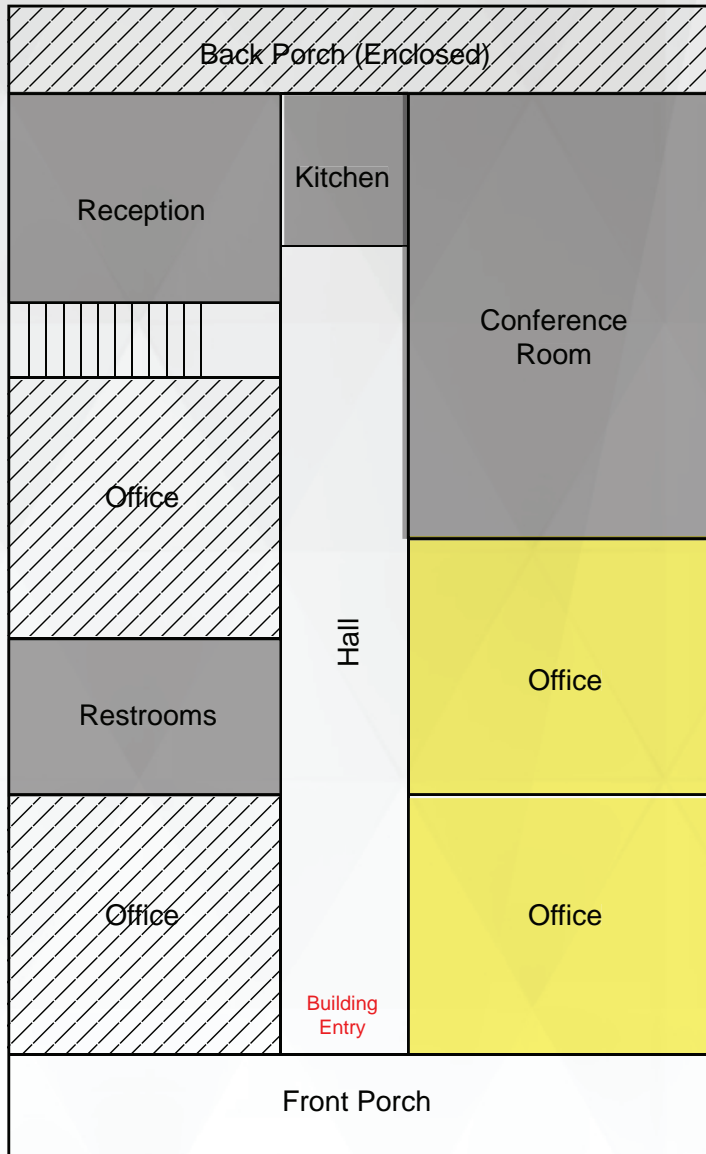
- » Walk to Caltrain and University Avenue Services/Amenities

- » Call Agents to Tour

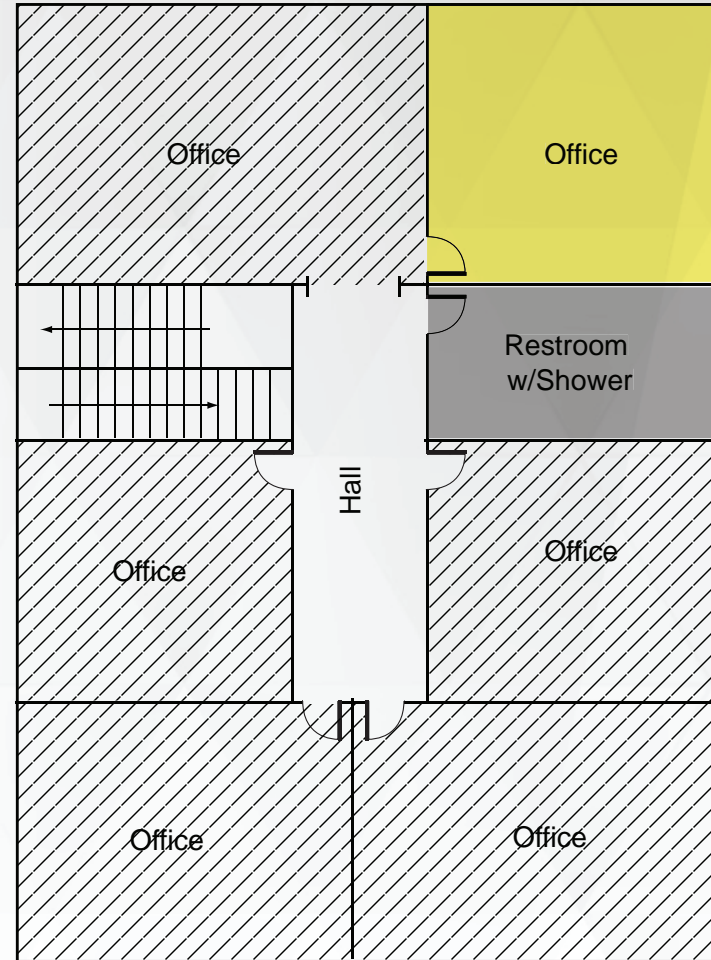
635 BRYANT STREET

CHERIE WITTRY 650.688.8523 cwittry@ngkf.com CA RE License #00863251
JOHN MCKENNA 650.688.8548 jmckenna@ngkf.com CA RE License #01276576

First Floor

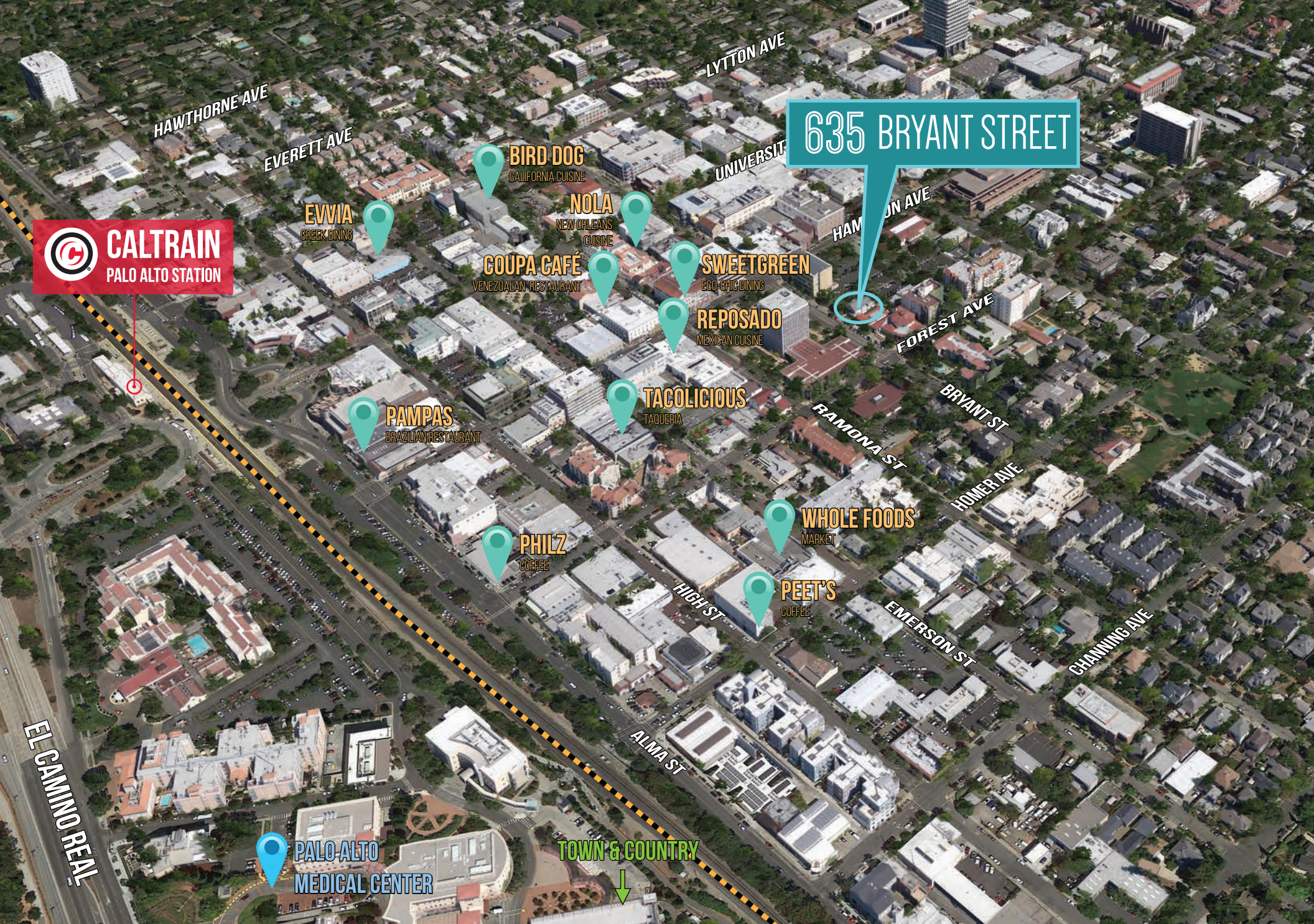


Second Floor



- Available
- Leased
- Common Area

← BRYANT STREET →



 **CALTRAIN**
PALO ALTO STATION

635 BRYANT STREET

BIRD DOG
CALIFORNIA CUISINE

NOLA
NEW ORLEANS CUISINE

SWEETGREEN
ECO-CHIC DINING

REPOSADO
MEXICAN CUISINE

COUPA CAFÉ
VENEZUELAN RESTAURANT

TACOLICIOUS
TAQUERIA

WHOLE FOODS
MARKET

EVVIA
GREEK DINING

PAMPAS
BRAZILIAN RESTAURANT

PHILZ
COFFEE

PEET'S
COFFEE

 **PALO ALTO MEDICAL CENTER**

TOWN & COUNTRY
↓

635 BRYANT STREET

CHERIE WITTRY 650.688.8523 cwittry@ngkf.com CA RE License #00863251
JOHN MCKENNA 650.688.8548 jmckenna@ngkf.com CA RE License #01276576