



FOR LEASE

# STAPLES PLAZA

1081 BROAD STREET | SHREWSBURY, NJ

PRE-LEASING 4,985 SF



**AMY STAATS**

*Vice President*

[AmyStaats@dkatz.com](mailto:AmyStaats@dkatz.com)

(201) 731-8494



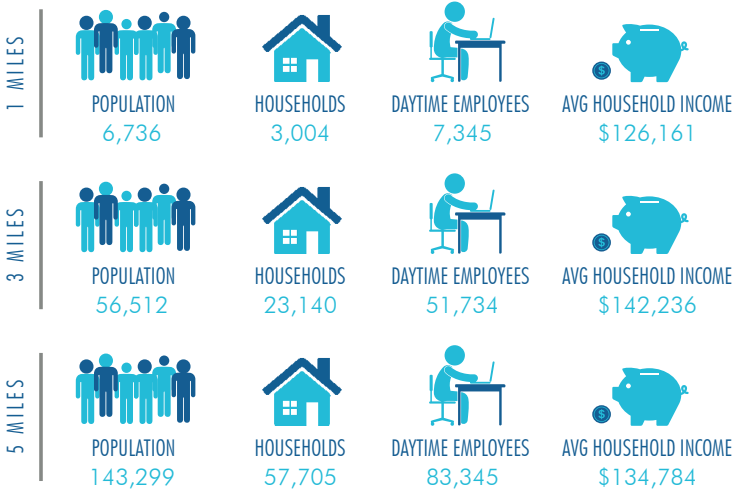
## HIGHLIGHTS

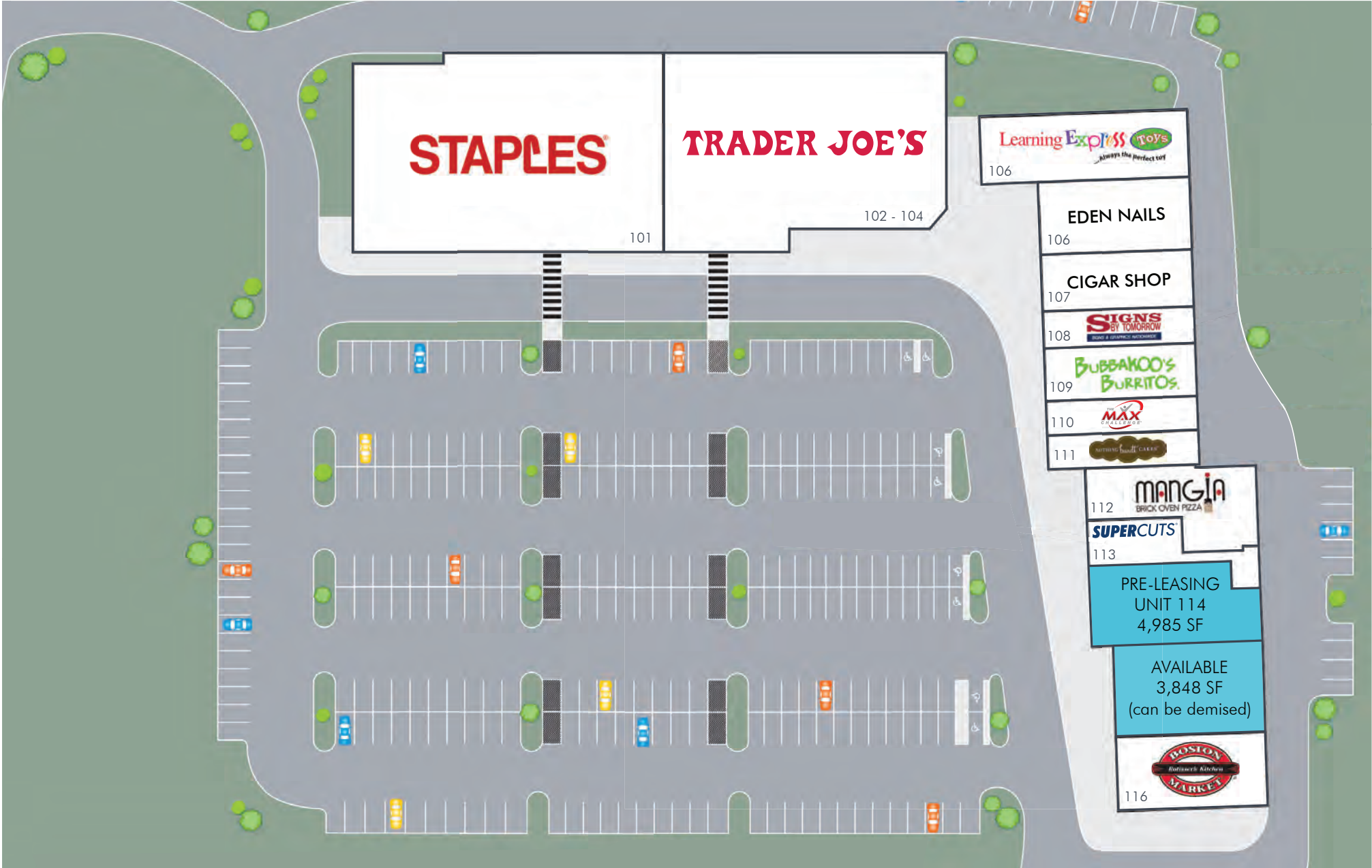
Pre-leasing 4,985 SF in Trader Joe's anchored Community Center with a total GLA of 60,000 SF

Centrally located off Route 35 less than a mile from The Grove and 3 miles from Red Bank's downtown and Monmouth Mall in Eatontown

Traffic counts of 32,474 VPD on Broad Street

## DEMOGRAPHICS





# KATZ & ASSOCIATES



## TRADE | AERIAL

1081 BROAD STREET  
SHREWSBURY, NJ

The information herein was obtained from third parties and has not been independently verified by Katz & Associates. Any and all interested parties should have their choice of experts inspect the property and verify all information. Katz & Associates makes no warranties or guarantees as to the information given to any prospective buyer or tenant. REV: 11.01.19