

36W 25ST



FOR LEASE

AVAILABILITY:

Floor	Size	Possession	Condition
Entire 6th	5,000 SF	Immediate	Built move-in ready
Entire 7th	5,000 SF	Immediate	To be White-boxed
Entire 16th	5,000 SF	Immediate	Built move-in ready

PROPERTY FEATURES:

- Lobby and façade renovation underway
- Close proximity to major subway lines
- Immediate availabilities
- Located in the heart of NoMad/Flatiron/Madison Sq. Park
- Tenant controlled HVAC systems
- Flexible term lengths available



FOR MORE INFORMATION, PLEASE CONTACT:

Adam Ardise
212 318 9741
adam.ardise@cushwake.com

Stephen Bellwood
212 318 9785
stephen.bellwood@cushwake.com

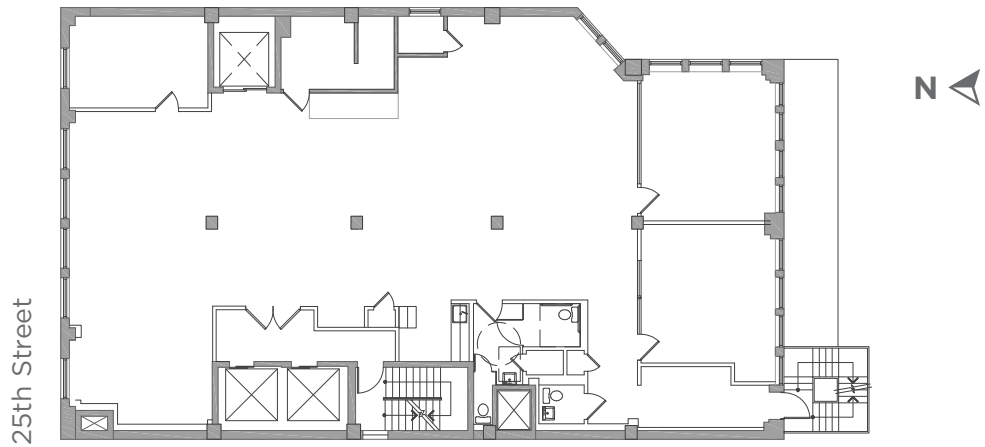
Gordon Hough
212 895 8927
gordon.l.hough@cushwake.com

Andrew Chase
212 709 0705
andrew.chase@cushwake.com

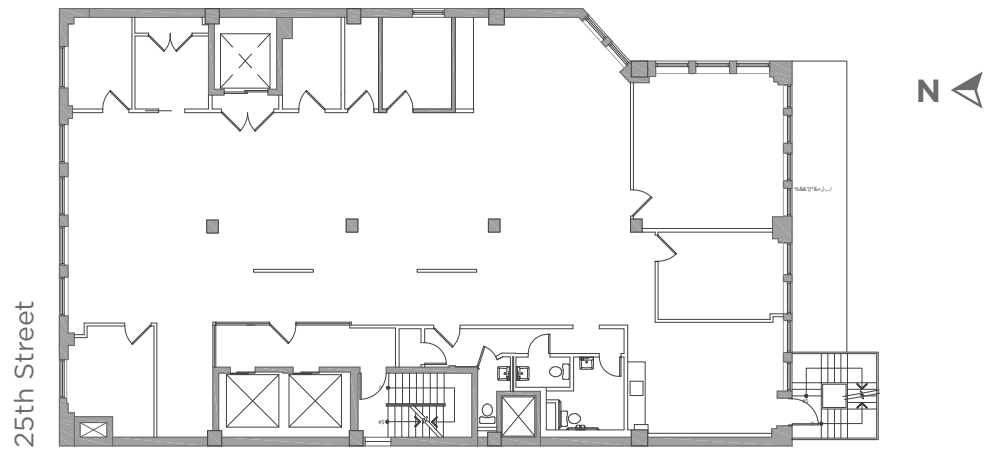
36W 25ST

FLOOR PLANS

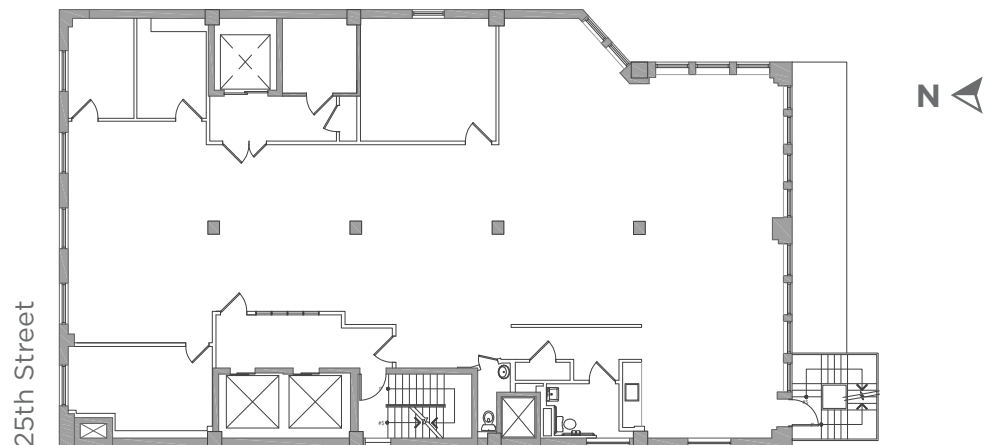
**ENTIRE 6TH FLOOR:
5,000 SF**



**ENTIRE 7TH FLOOR:
5,000 SF**



**ENTIRE 16TH FLOOR:
5,000 SF**



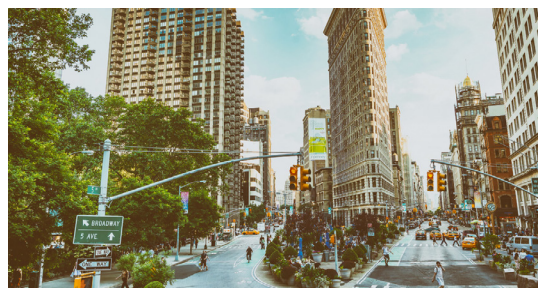
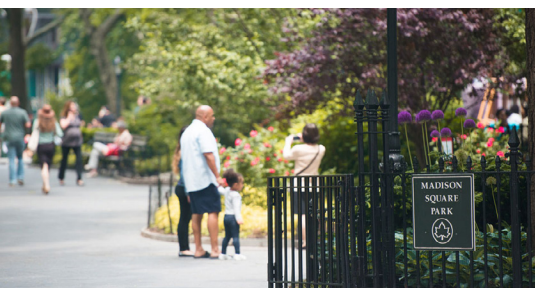
36W
25ST

BUILDING PHOTO



36W 25ST

TRANSIT & AMENITY MAP



FOR MORE INFORMATION, PLEASE CONTACT:

Adam Ardise
212 318 9741
adam.ardise@cushwake.com

Stephen Bellwood
212 318 9785
stephen.bellwood@cushwake.com

Gordon Hough
212 895 8927
gordon.l.hough@cushwake.com

Andrew Chase
212 709 0705
andrew.chase@cushwake.com