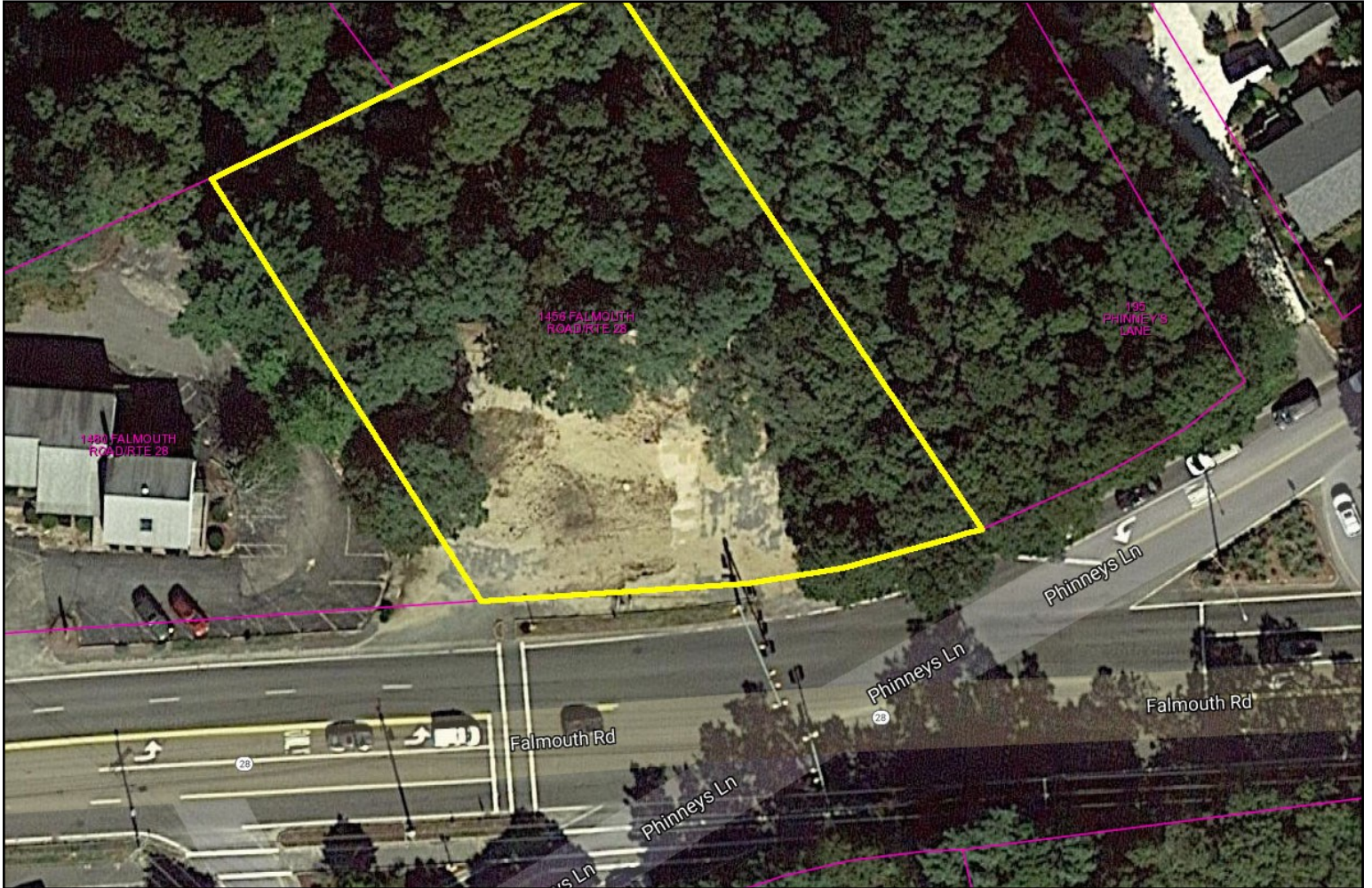


BUILDABLE COMMERCIAL LAND FOR SALE

0.65 ± ACRES

1456 Falmouth Road | Centerville MA



FOR SALE AT \$395,000

For more information, please contact:

CHRISTOPHER E. BAILEY *CCIM*

Office: 508-862-9000, Ext. 132 | Cell: 508-259-3408

Fax: 508-862-9200 | bkuhrtz@comrealty.net

Commercial
Realty Advisors



222 West Main Street, Hyannis, MA 02601 | 508-862-9000 | www.comrealty.net

BUILDABLE COMMERCIAL/INDUSTRIAL LOT FOR SALE

The Property 1456 Falmouth Road is a 0.65 ± acre lot located at a major Route 28/Phinney's Lane traffic artery in Centerville. The lot is flat, buildable and partially cleared. Substantial traffic is generated by surrounding businesses

Map/Block 209 / 019—Use Code:3900

Zoning: This property is zoned SPLIT RD-1 (Residence D-1 District); RC (Residence C District); HO (Highway Office District) by the Town of Barnstable.

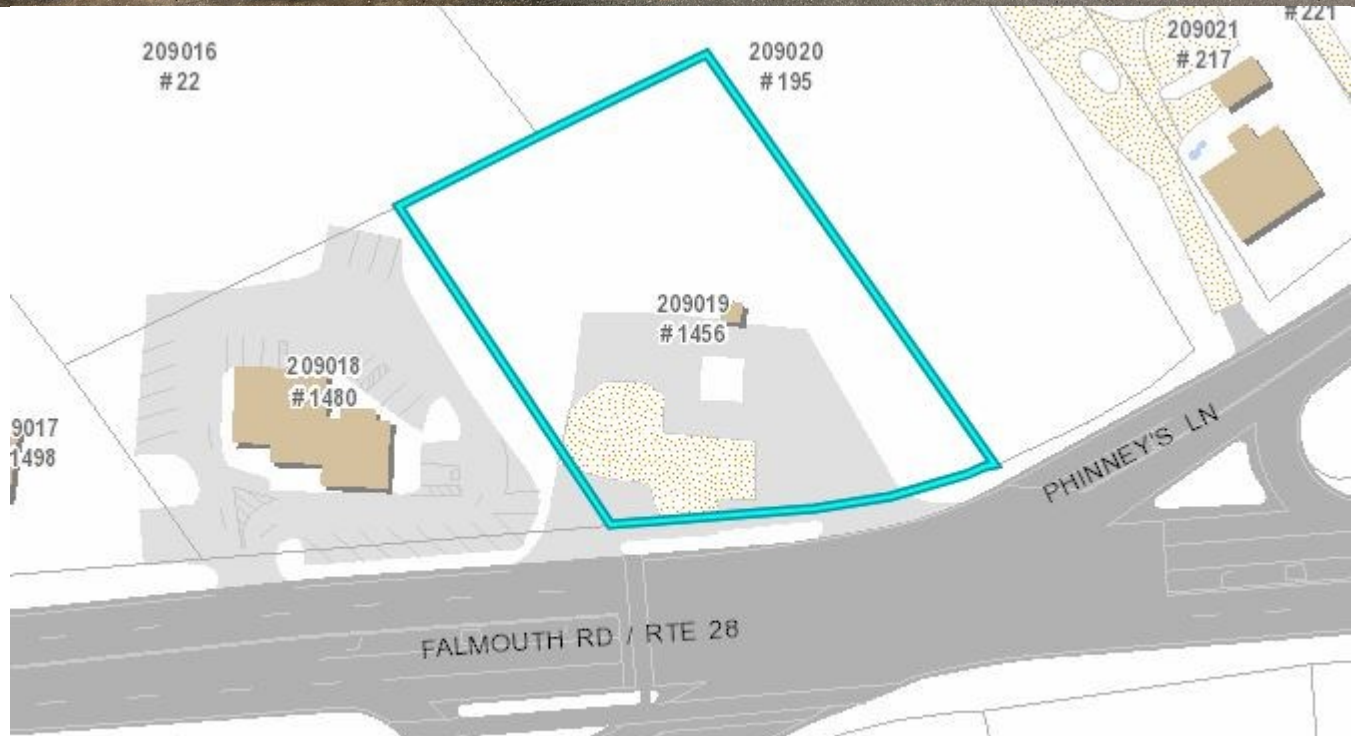
See [Chapter 240: Zoning](#) in the Town of Barnstable Zoning Bylaws

Assessment and Taxes 2019 RE Taxes: \$2,171.19
(2019):



Commercial Realty Advisors

PROPERTY IMAGES: 1456 FALMOUTH ROAD, CENTERVILLE MA



COMMERCIAL REALTY ADVISORS' DISCLAIMER

This information has been secured from sources we believe to be reliable, but we make no representation or warranties, expressed or implied, as to the accuracy of the information contained herein. Commercial Realty Advisors, Inc. and the agent presenting this opportunity represent the Seller / Lessor, and are neither architects, engineers, inspectors, accountants nor attorneys, and therefore all buyers / tenants must consult with their own architects, engineers, inspectors, accountants or attorneys as to financial, zoning, lot line, handicapped accessibility, flood plain, mechanical, structural, or environmental concerns. Buyer must verify all information and bears all the risk for inaccuracies. Referenced square footage and acreage and sketched outlines are approximate, and this information package is subject to change.