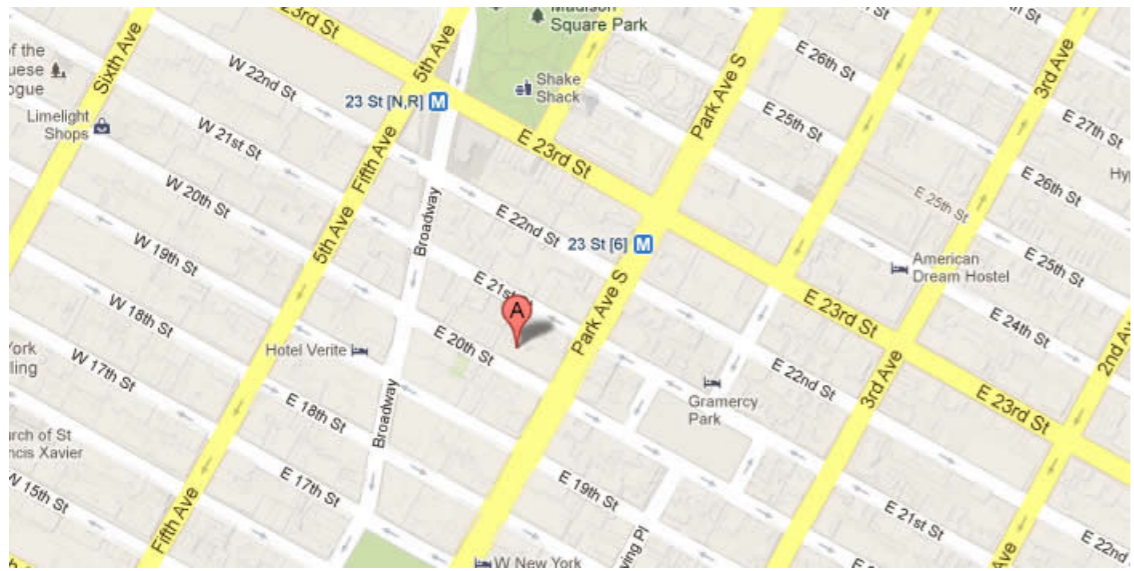




45 EAST 20TH STREET, New York, NY 10003



62,856.00 SF

Up To 5,000 and 5,000 SF Available

Flatiron district office building with street-level retail with attended lobby , 24 hour access and easy access to Bus Lines, Metro/Subway
Built: 1911 Architect: Frederick C. Zobel

Tenants

d/b/a THE WING

For more information call

1- 212- 249- 1550

KOEPEL ROSEN

40 East 69th Street

New York, NY 10021

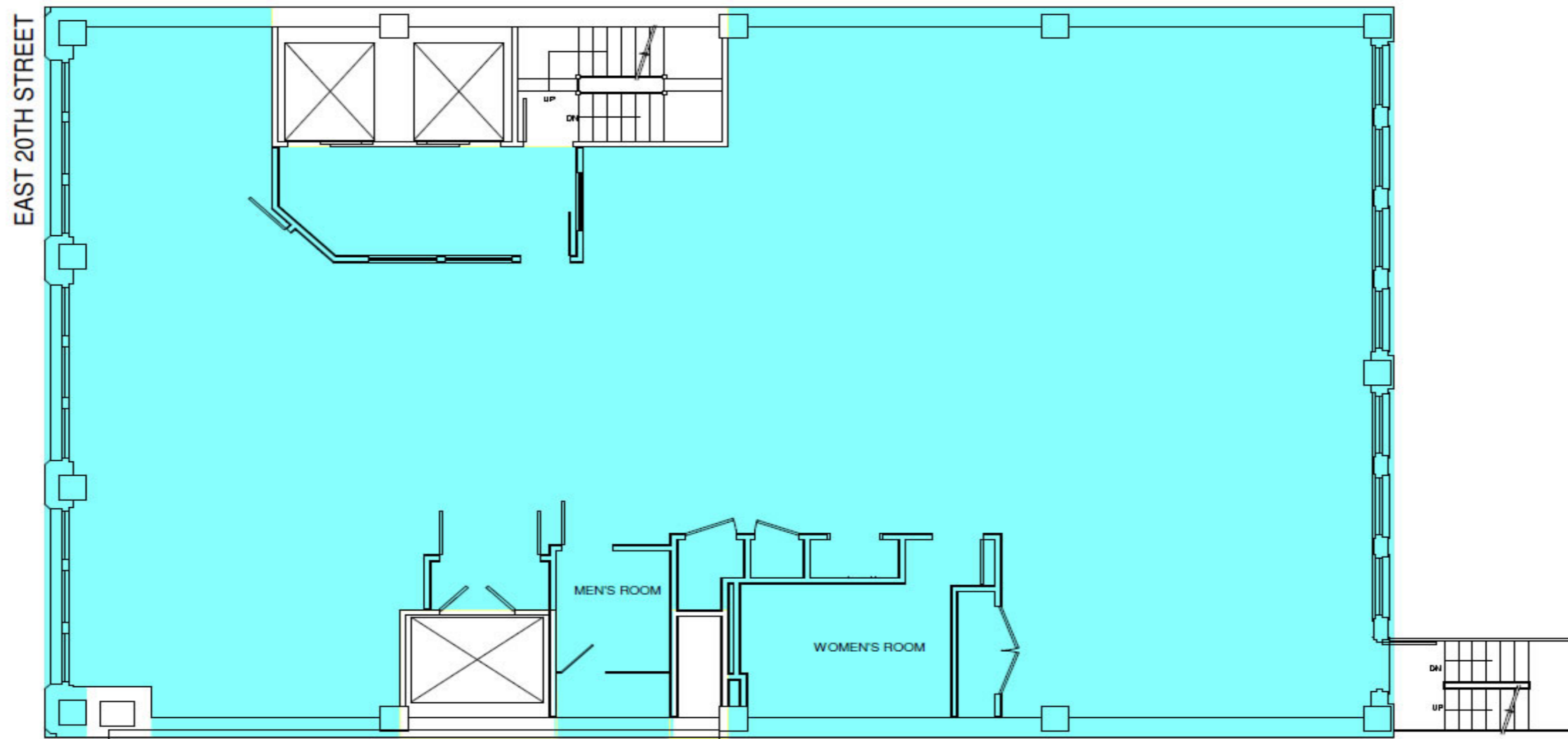
dkoepfel@koepfelrosen.com

45 EAST 20TH STREET, New York, NY 10003

45 East 20th Street



Typical Floor Plan



K
R Koeppel Rosen LLC
40 East 69th Street
New York, NY 10021
212-249-1550
www.koeppe Rosen.com

Note: All dimensions and conditions are approximate and for information only

Scale: NTS
Date: February 10, 2016



For more information call
1- 212- 249- 1550
KOEPEL ROSEN
40 East 69th Street
New York, NY 10021
dkoeppe@koeppe Rosen.com