

OFFICE CONDOMINIUM FOR LEASE

903 ± SQ FT | SECOND FLOOR

86 Willow Street | Unit 25 | Yarmouth MA



FOR LEASE AT \$16.50/SQ FT (N-N-N)

For more information, please contact:

JOYCE O'CONNOR

Office: 508-862-9000, Ext. 131 | joconnor@comrealty.net

JEFF EKLUND

Office: 508-862-9000, Ext. 115 | jeklund@comrealty.net

Commercial
Realty Advisors



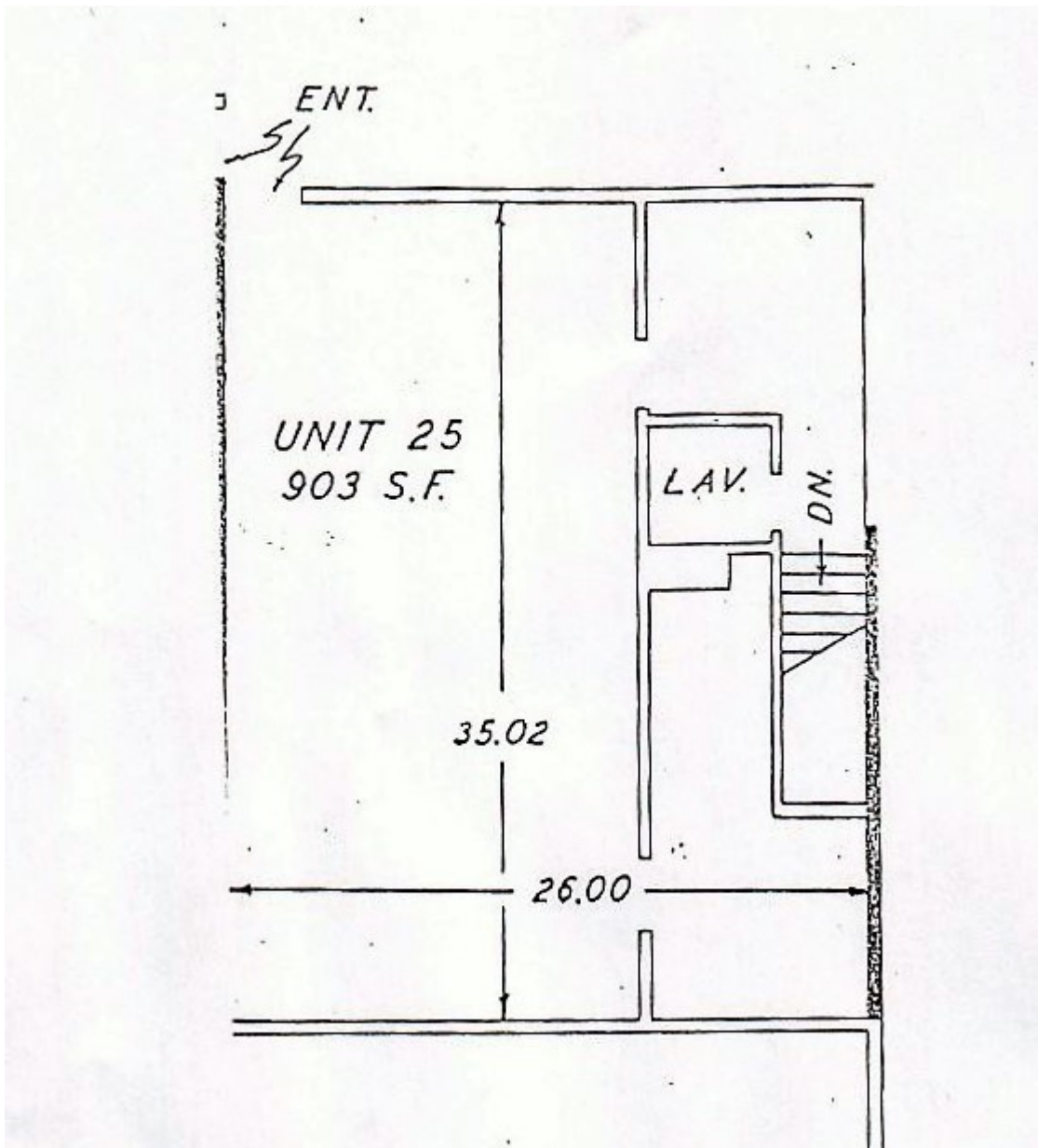
222 West Main Street, Hyannis, MA 02601 | 508-862-9000 | www.comrealty.net

PROPERTY SUMMARY: 86 WILLOW STREET, UNIT 25, YARMOUTH

The Property

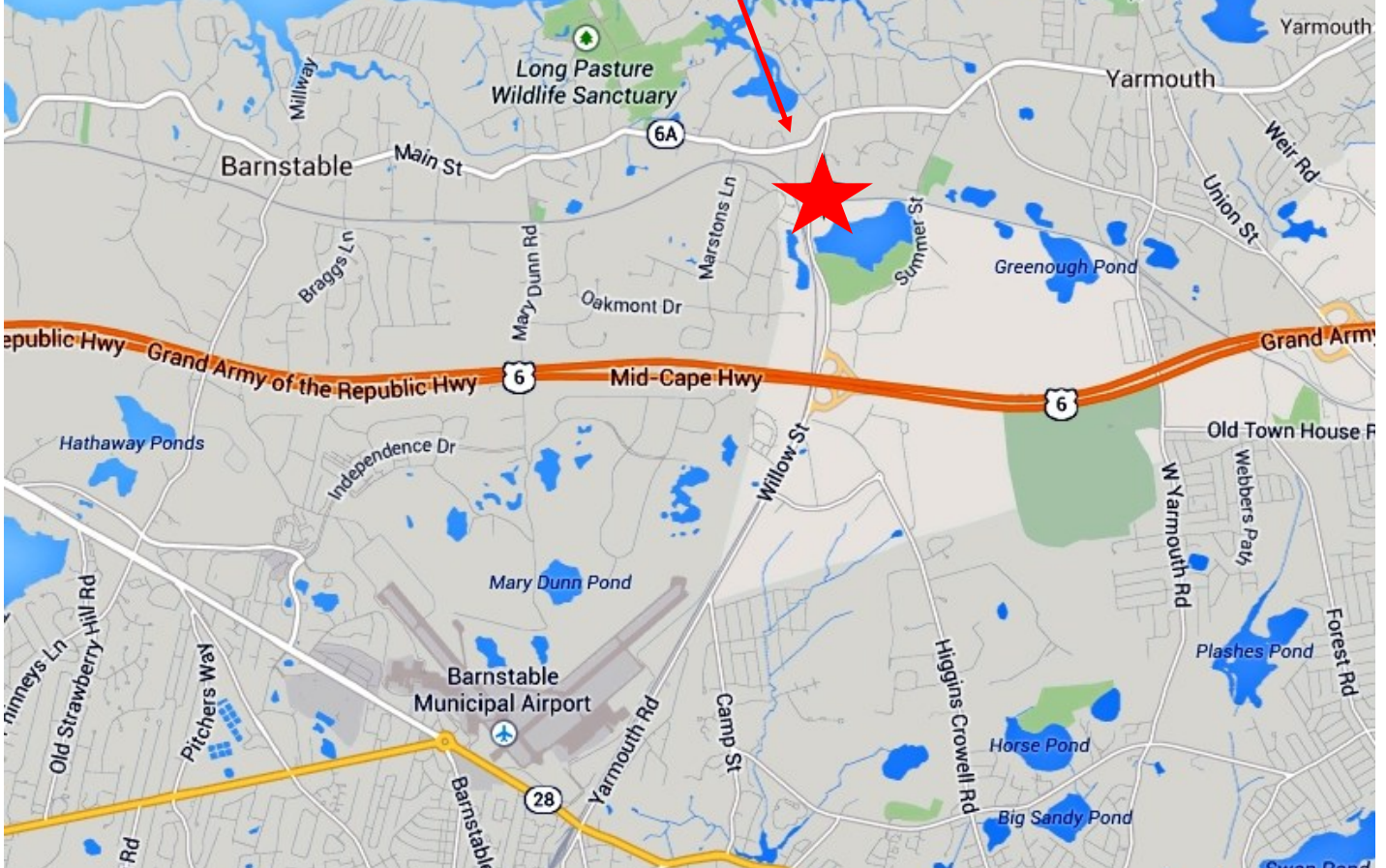
86 Willow Street is a professional office building with curb appeal and ample parking on the property. Unit 25 is a 903 ± sq. ft. 2nd-floor office space that consist of 3 rooms: 2 small, 1 oversized. The unit is freshly painted with new carpet. Building has gas heat and heat pump AC. Being offered at \$16.50/sq. ft. (NNN); triple net fee is \$2/sq. ft. and includes snow & ice removal, exterior maintenance and professional landscaping.

UNIT 25: FLOOR PLAN



Commercial Realty Advisors

MAP VIEW: 86 WILLOW STREET, UNIT



COMMERCIAL REALTY ADVISORS' DISCLAIMER

This information has been secured from sources we believe to be reliable, but we make no representation or warranties, expressed or implied, as to the accuracy of the information contained herein. Commercial Realty Advisors, Inc. and the agent presenting this opportunity represent the Seller / Lessor, and are neither architects, engineers, inspectors, accountants nor attorneys, and therefore all buyers / tenants must consult with their own architects, engineers, inspectors, accountants or attorneys as to financial, zoning, lot line, handicapped accessibility, flood plain, mechanical, structural, or environmental concerns. Buyer must verify all information and bears all the risk for inaccuracies. Referenced square footage and acreage and sketched outlines are approximate, and this information package is subject to change.