

State Hwy 5 & Dewey Road Centerville, Iowa

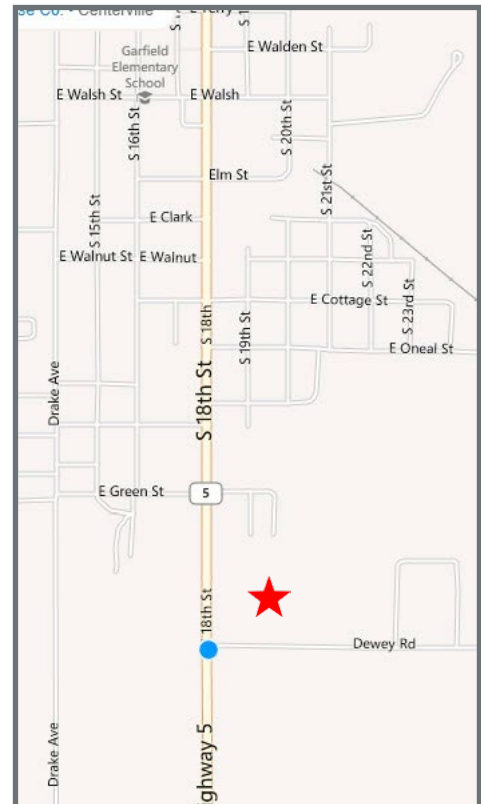
- Lot 1 | 0.53± Acres
- Outlot has no zoning. It is within Appanoose County and is not annexed into the City of Centerville, Iowa yet. Assumed zoning will be C-1 Commercial
- Retail, restaurant & professional offices
- Great visibility, access, corner lot

Demographics	3 Miles	5 Miles	10 Miles
Est. Population:	6,002	6,877	10,357
Est. Median Income:	\$32,651	\$33,097	\$34,348

For more information:

Carl LaSala

+1 913 956 5805
carl@nai-heartland.com



NO WARRANTY OR REPRESENTATION, EXPRESS OR IMPLIED, IS MADE AS TO THE ACCURACY OF THE INFORMATION CONTAINED HEREIN, AND THE SAME IS SUBMITTED SUBJECT TO ERRORS, OMISSIONS, CHANGE OF PRICE, RENTAL OR OTHER CONDITIONS, PRIOR SALE, LEASE OR FINANCING, OR WITHDRAWAL WITHOUT NOTICE, AND OF ANY SPECIAL LISTING CONDITIONS IMPOSED BY OUR PRINCIPALS NO WARRANTIES OR REPRESENTATIONS ARE MADE AS TO THE CONDITION OF THE PROPERTY OR ANY HAZARDS CONTAINED THEREIN ARE ANY TO BE IMPLIED.

4400 College Blvd Suite 170
Overland Park, Kansas 66211
+1 913 362 1000
nai-heartland.com

State Hwy 5 & Dewey Rd
Site Plan

