

±69 ACRE COPPER SKYE MOBILE HOME PARK

EXCLUSIVE LISTING | FULLY ENTITLED MOBILE HOME PARK | COOLIDGE, ARIZONA

LOCATION Property is located west of the southeast corner of Martin Road and La Palma Road

PRICE \$15,000 per acre

UTILITIES

Water: Arizona Water Company
Sewer: City of Coolidge
Power: ED2 (Electrical District 2)

PARCELS 209-31-001D & 209-31-001E

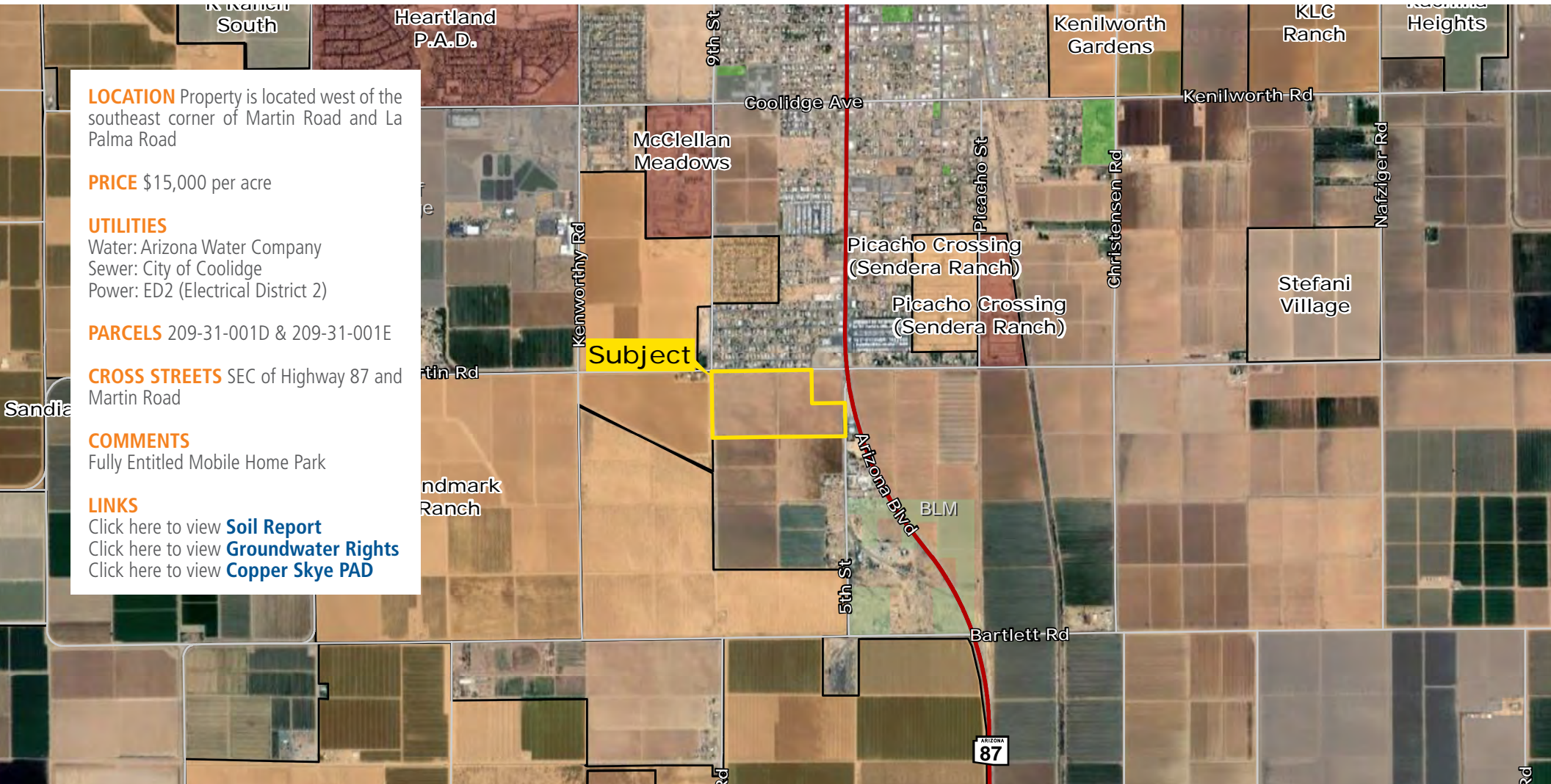
CROSS STREETS SEC of Highway 87 and Martin Road

COMMENTS

Fully Entitled Mobile Home Park

LINKS

Click here to view [Soil Report](#)
Click here to view [Groundwater Rights](#)
Click here to view [Copper Skye PAD](#)



Kirk McCarville | kmccarville@landadvisors.com

442 W. Kortsen Road, Suite 203, Casa Grande, Arizona 85122 ph. 520.251.0348 | www.landadvisors.com

The information contained herein is from sources deemed reliable. We have no reason to doubt its accuracy but do not guarantee it. It is the responsibility of the person reviewing this information to independently verify it. This package is subject to change, prior sale or complete withdrawal. AZPL68437-5.29.18



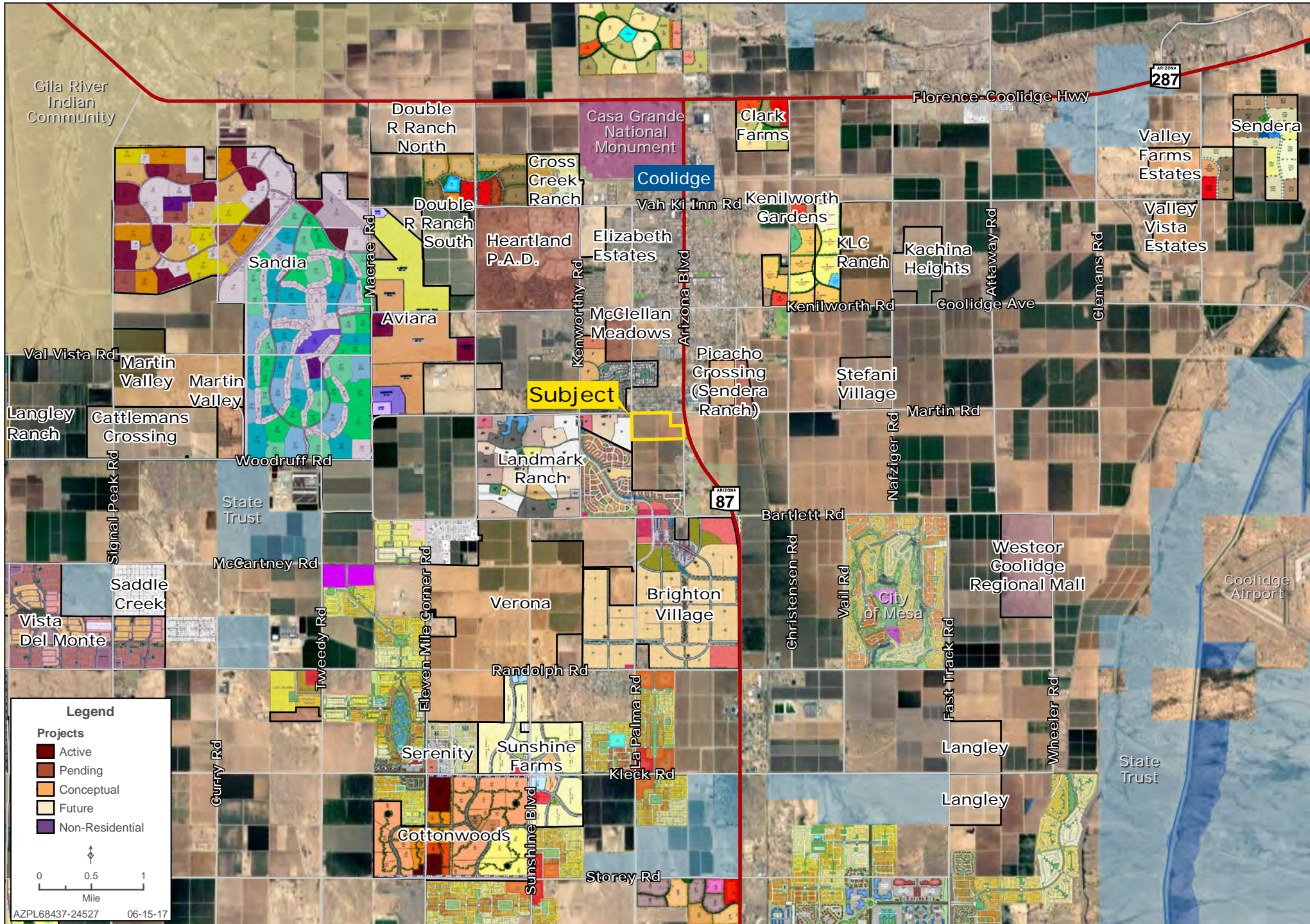
REGIONAL MAP

Kirk McCarville | 480.483.8100 | www.landadvisors.com



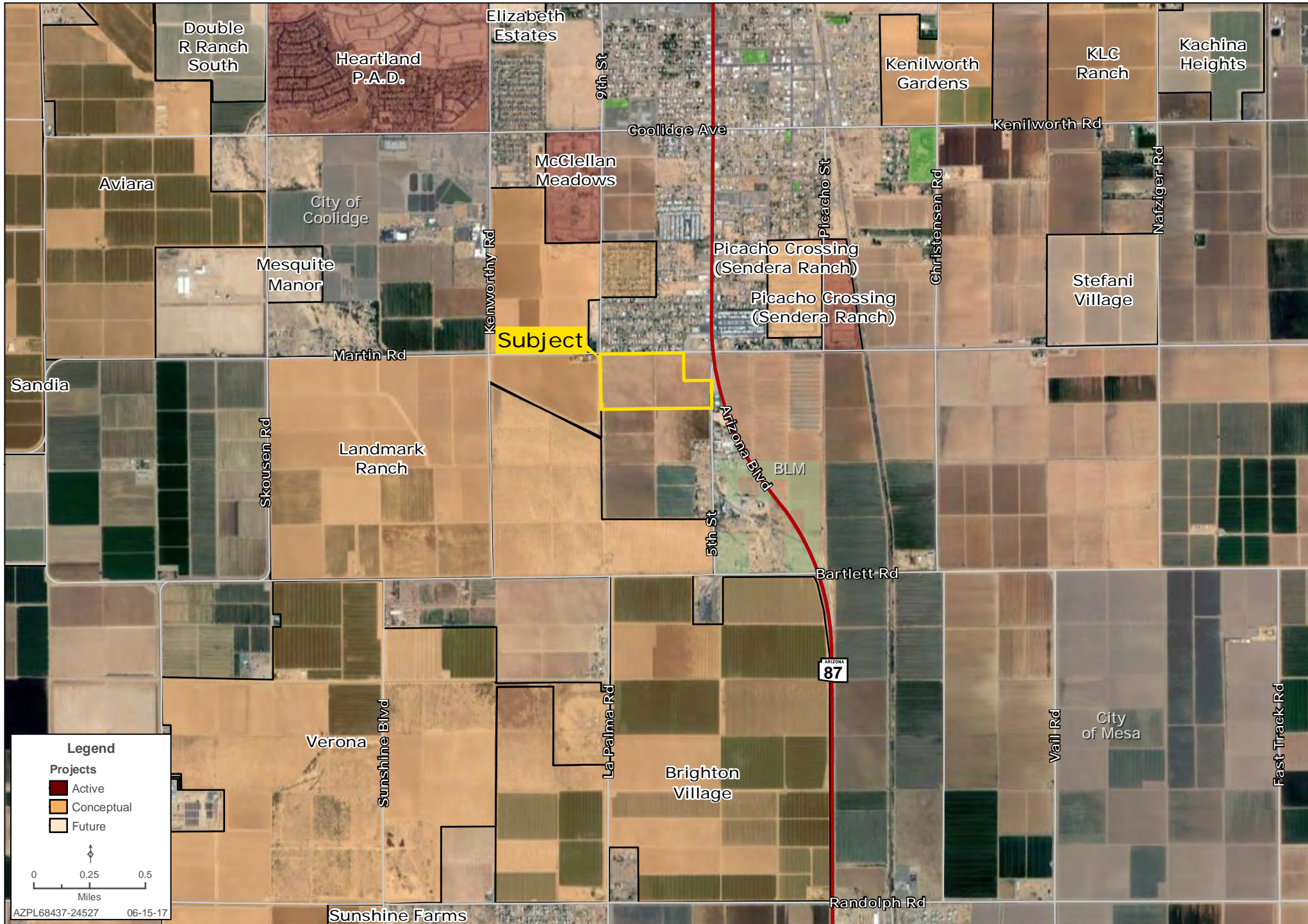
SURROUNDING DEVELOPMENT MAP

Kirk McCarville | 480.483.8100 | www.landadvisors.com



SURROUNDING AREA MAP

Kirk McCarville | 480.483.8100 | www.landadvisors.com



PROPERTY DETAIL MAP

Kirk McCarville | 480.483.8100 | www.landadvisors.com



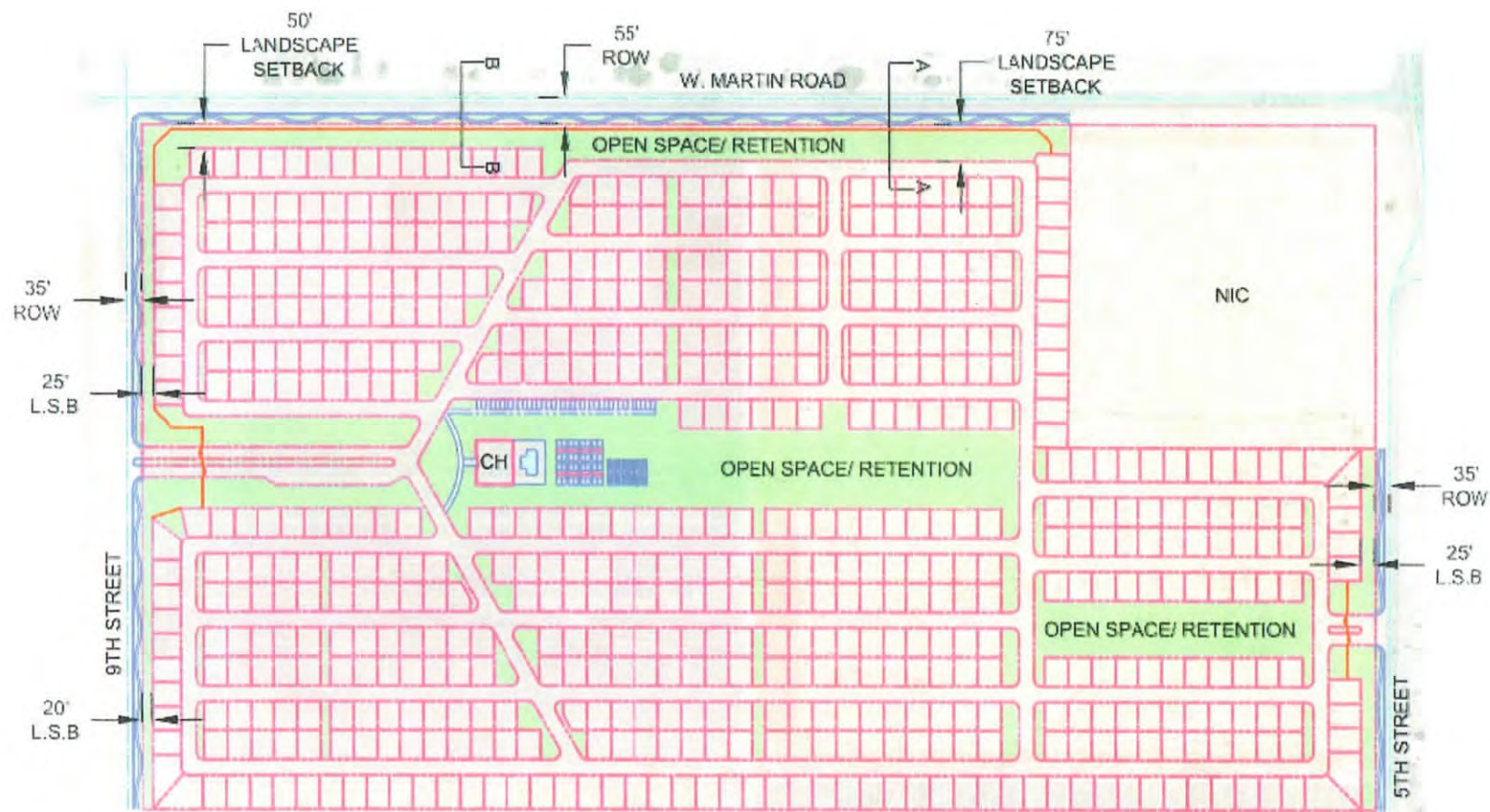
SOILS MAP

Kirk McCarville | 480.483.8100 | www.landadvisors.com



Pinal County, Arizona, Western Part (AZ659)			
Map Unit Symbol	Map Unit Name	Acres in AOI	Percent of AOI
3	Casa Grande fine sandy loam, 0 to 3 percent slopes	69.7	100.0%
Totals for Area of Interest		69.7	100.0%

COPPER SKYE CONCEPTUAL SITE PLAN



LAND AREA	
OWNERSHIP AREA:	74.7 AC.
LESS PERIMETER ROWS:	
MARTIN ROAD (22'):	0.9E AC.
9TH STREET (35'):	1.13 AC.
5TH STREET (35'):	0.60 AC.
	2.71 AC. - 2.7 AC.
NET DEVELOPABLE:	72.0 AC.

LAND USE	
50' x 60':	512
50' x 70':	81
TOTAL UNITS:	593
OPEN SPACE:	$\pm 16.2 / 72.0 = 22.5\%$

COPPER SKYE RESORT

COOLIDGE, AZ
PREPARED FOR: RICK MILLER ASSOCIATES

CONCEPTUAL SITE PLAN

SCALE: 1" = 300'
DATE: 08.20.12
GP JOB# 09000




GILMORE PARSONS
LAND DESIGN GROUP
1111 E. RAILROAD AVENUE, SUITE 100
TULSA, OKLAHOMA 74103
918.466.1111
WWW.GILMOREPARSONS.COM

Figure 1 - Conceptual Site Plan