

# QUINN JUNCTION LAND

Highway 248 & Atkinson Avenue, Park City, Utah 84060



# FOR SALE

7.566 ACRES

## PROPERTY FEATURES

- 7.566 Acres
- Great Central Summit County Location
- 5 Minutes to Park City
- Great Visibility and Access to I-40 at Quinn's Junction
- Approximately 4 Acres of Usable Upland Ground
- Excess Acreage Used for 30% Open Space Requirement

FOR MORE  
INFORMATION  
CONTACT

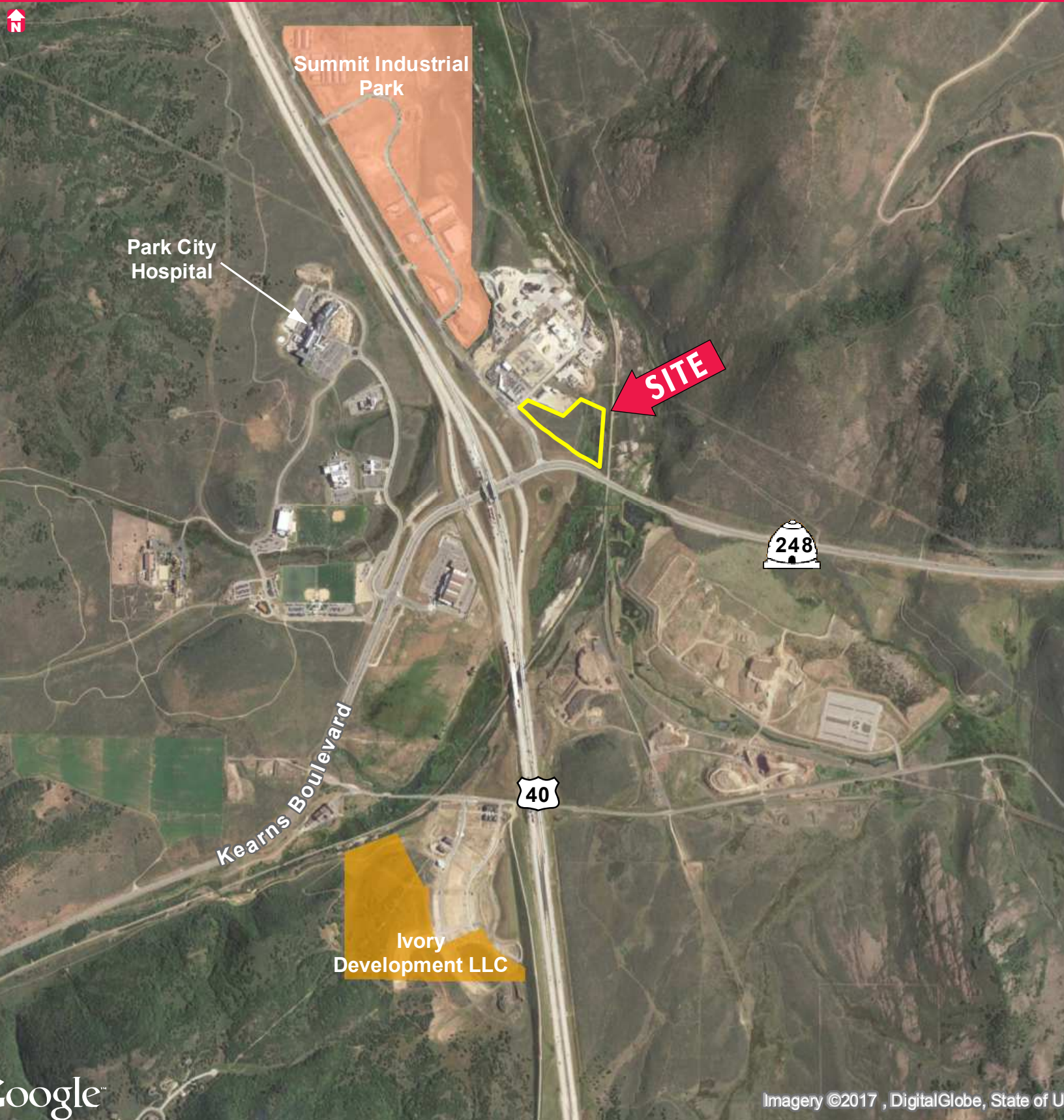
STEVE CONDIE, CCIM, SIOR  
o.801.578.5511  
c.801.809.5000  
scondie@ngacres.com

 **Newmark Grubb**  
ACRES

376 East 400 South, Suite 120 | Salt Lake City, Utah 84111 | 801.578.5555 | [www.ngacres.com](http://www.ngacres.com)

# QUINN JUNCTION LAND

Highway 248 & Atkinson Avenue, Park City, Utah 84060



Google™

Imagery ©2017, DigitalGlobe, State of U