



11140 SW Barbur Boulevard

Portland, Oregon

Full 2nd floor of 1,942 square feet

Efficient layout with:

- 6 private offices/conference rooms
- Kitchenette
- Reception and open office
- 2 bathrooms
- Storage

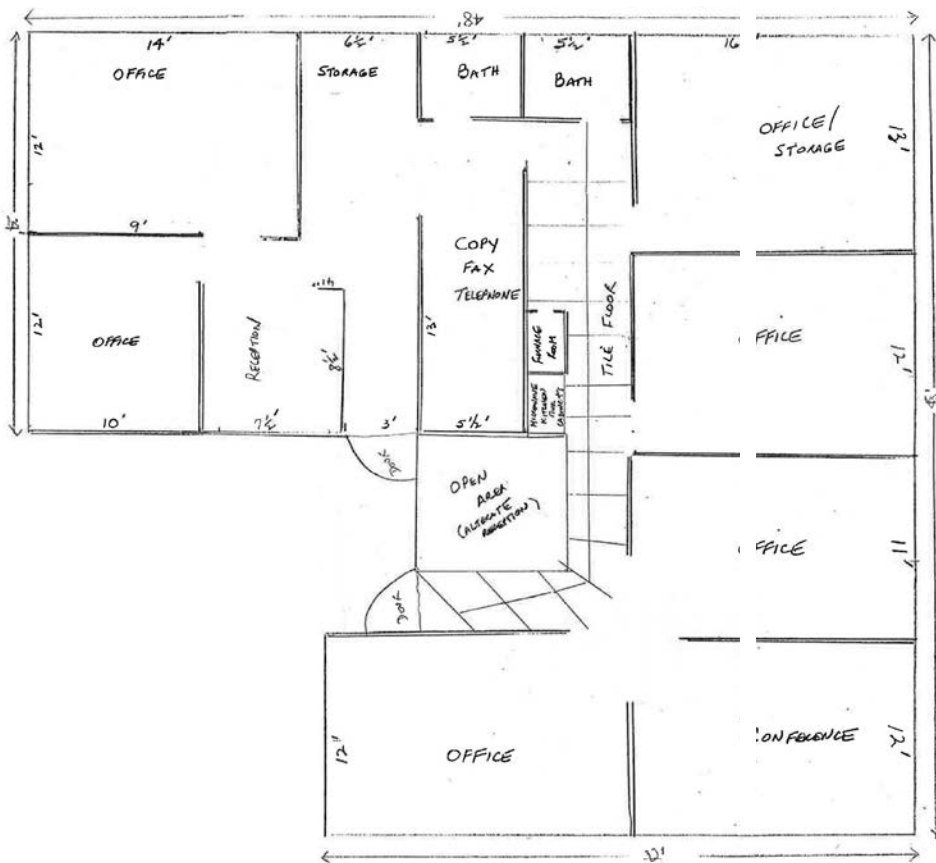
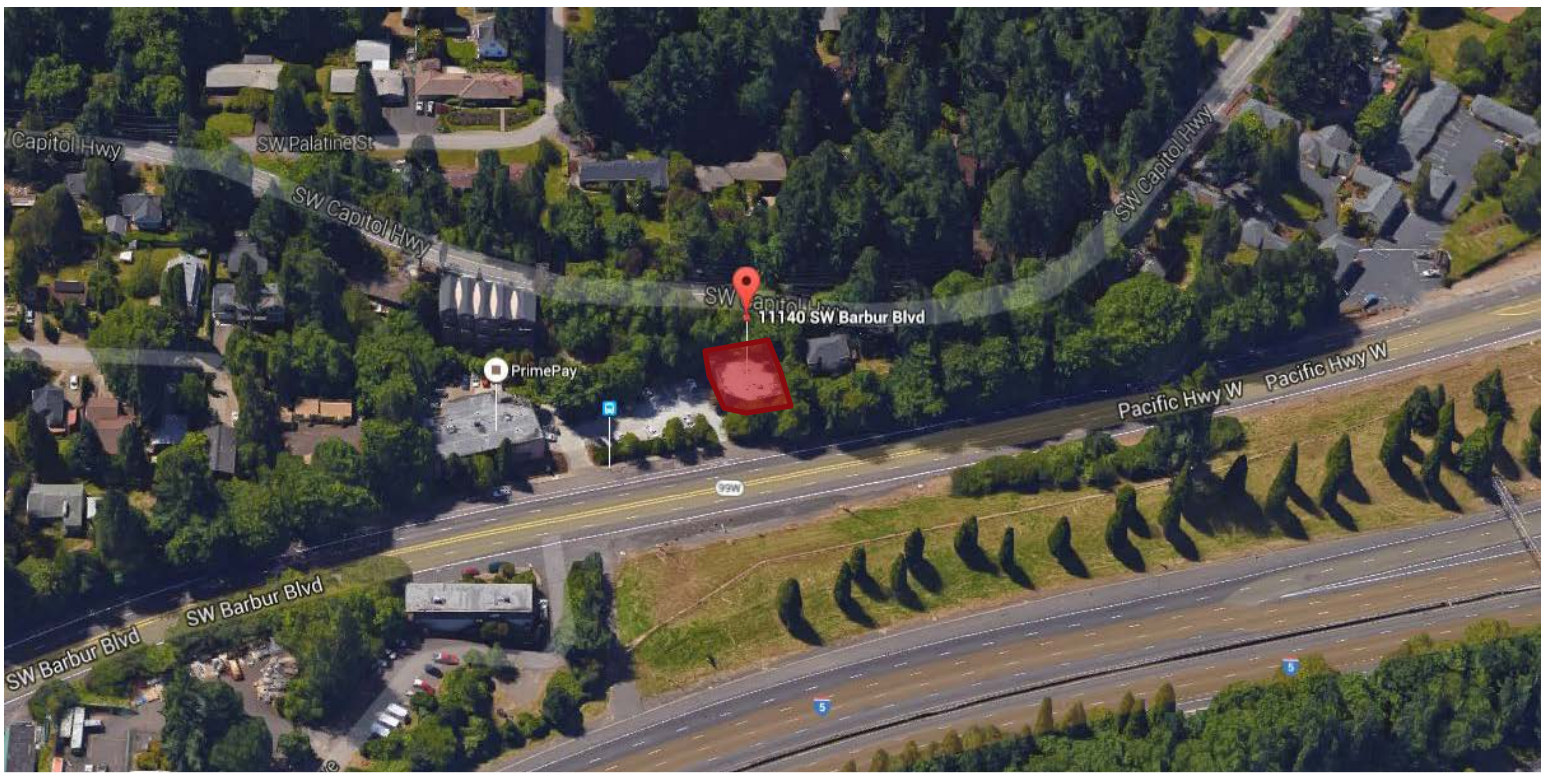
6 parking spaces at no additional cost

Great location with quick access to I-5 and Hwy 217

Steps from main TriMet route

Rate: \$15.50/s.f. full service





Neighborhood Highlights:

Food:

Subway
Starbucks
Jimmy Johns
Baja Fresh
Bullseye Pub
Roundtable
Tai Orchid
Sushi Hana
Bannings
McDonalds
Taco Bell
Burger King
Taco Time
Wendy's

Grocery:

Fred Meyer
Wallgreens
WinCo
Barbur World
Foods

Banking:

Chase Bank
KeyBank
US Bank
Wells Fargo

Matt McClenaghan
Associate
+1 503 972 8605
matt.mcclenaghan@am.jll.com

11140 SW Barbur Boulevard

