



**OFFICE SPACE**

**Property Details**

Available	1,750 SF
Lease Rate	\$10.00/ SF
Lease Type	Modified Gross*

\*Tenant pays prorata share of utilities

**Property Highlights**

- Excellent location near grant road/I-10 and moments from down town
- Includes conference room, private office and bull pen
- Building security and 24/7 camera surveillance available
- Common area bathrooms and kitchen
- Beautiful reception area
- Space includes 130 SF vault



**Ryan McGregor**  
Commercial Properties  
+1 520 546 2748  
[rmcgregor@picor.com](mailto:rmcgregor@picor.com)

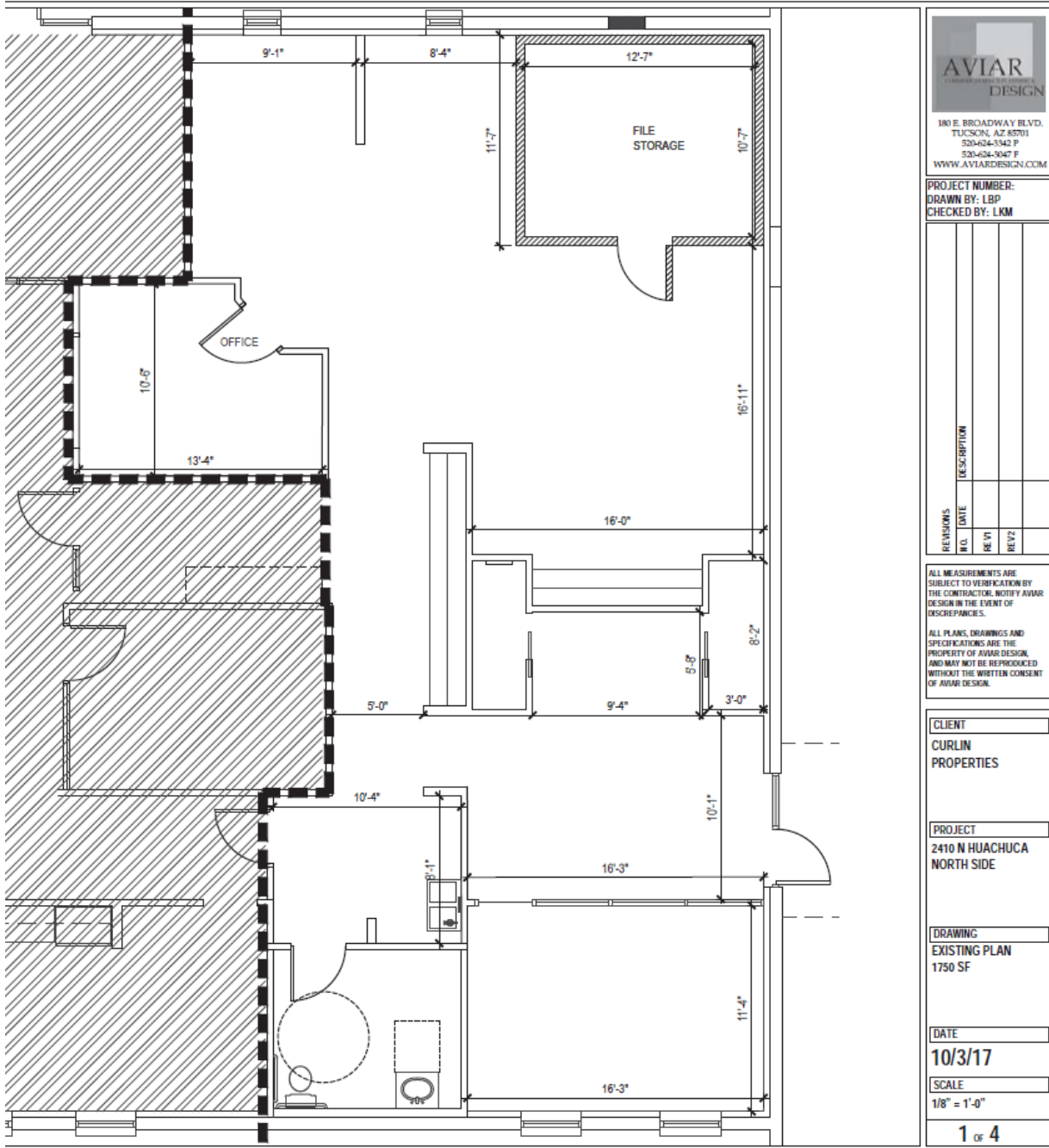
**Isaac Figueroa**  
Commercial Properties  
+1 520 546 2743  
[ifigueroa@picor.com](mailto:ifigueroa@picor.com)

**PICOR Commercial Real Estate Services**  
1100 N. Wilmot, Suite 200  
Tucson, Arizona 85712  
phone: +1 520 748 7100  
[picor.com](http://picor.com)

*Independently Owned and Operated / A Member of the Cushman & Wakefield Alliance*  
Cushman & Wakefield Copyright 2016. No warranty or representation, express or implied, is made to the accuracy or completeness of the information contained herein, and same is submitted subject to errors, omissions, change of price, rental or other conditions, withdrawal without notice, and to any special listing conditions imposed by the property owner(s). As applicable, we make no representation as to the condition of the property (or properties) in question.

Floor Plan

OFFICE SPACE



Ryan McGregor  
Commercial Properties  
+1 520 546 2748  
rmcgregor@picor.com

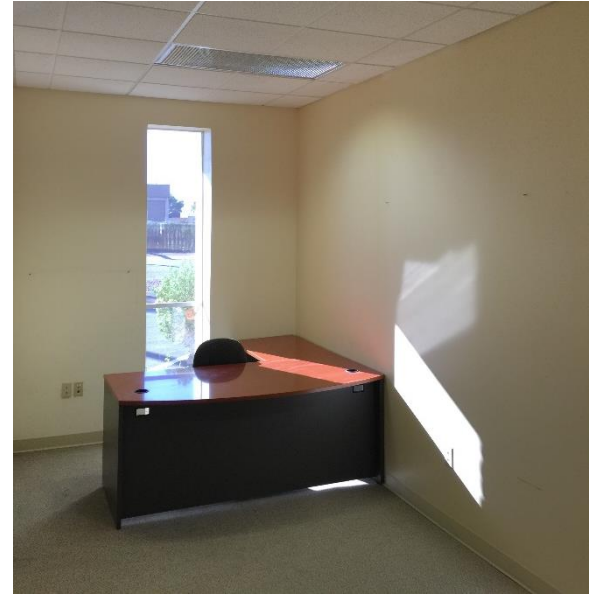
Isaac Figueroa  
Commercial Properties  
+1 520 546 2743  
ifigueroa@picor.com

**PICOR Commercial Real Estate Services**  
1100 N. Wilmot, Suite 200  
Tucson, Arizona 85712  
phone: +1 520 748 7100  
picor.com

*Independently Owned and Operated / A Member of the Cushman & Wakefield Alliance*  
Cushman & Wakefield Copyright 2016. No warranty or representation, express or implied, is made to the accuracy or completeness of the information contained herein, and same is submitted subject to errors, omissions, change of price, rental or other conditions, withdrawal without notice, and to any special listing conditions imposed by the property owner(s). As applicable, we make no representation as to the condition of the property (or properties) in question.

**Photos**

**OFFICE SPACE**



**Ryan McGregor**  
Commercial Properties  
+1 520 546 2748  
[rmcgregor@picor.com](mailto:rmcgregor@picor.com)

**Isaac Figueroa**  
Commercial Properties  
+1 520 546 2743  
[ifigueroa@picor.com](mailto:ifigueroa@picor.com)

**PICOR Commercial Real Estate Services**  
1100 N. Wilmot, Suite 200  
Tucson, Arizona 85712  
phone: +1 520 748 7100  
[picor.com](http://picor.com)

*Independently Owned and Operated / A Member of the Cushman & Wakefield Alliance*

Cushman & Wakefield Copyright 2016. No warranty or representation, express or implied, is made to the accuracy or completeness of the information contained herein, and same is submitted subject to errors, omissions, change of price, rental or other conditions, withdrawal without notice, and to any special listing conditions imposed by the property owner(s). As applicable, we make no representation as to the condition of the property (or properties) in question.

**Photos**

**OFFICE SPACE**



**Ryan McGregor**  
Commercial Properties  
+1 520 546 2748  
[rmcgregor@picor.com](mailto:rmcgregor@picor.com)

**Isaac Figueroa**  
Commercial Properties  
+1 520 546 2743  
[ifigueroa@picor.com](mailto:ifigueroa@picor.com)

**PICOR Commercial Real Estate Services**  
1100 N. Wilmot, Suite 200  
Tucson, Arizona 85712  
phone: +1 520 748 7100  
[picor.com](http://picor.com)

*Independently Owned and Operated / A Member of the Cushman & Wakefield Alliance*

Cushman & Wakefield Copyright 2016. No warranty or representation, express or implied, is made to the accuracy or completeness of the information contained herein, and same is submitted subject to errors, omissions, change of price, rental or other conditions, withdrawal without notice, and to any special listing conditions imposed by the property owner(s). As applicable, we make no representation as to the condition of the property (or properties) in question.