



**for lease**  
**±23,532 SF AVAILABLE**  
Divisible to ±11,343 SF & ±12,189 SF



DOLLINGER PROPERTIES



**Frank D. Cox**  
408.982.8422

fcox@newmarkccarey.com  
CA RE License #00889881



**Mark Daschbach**  
650.688.8540

dash@newmarkccarey.com  
CA RE License #00871922



**Dave Haugh**  
408.987.4171

dhaugh@newmarkccarey.com  
CA RE License #00671547



## location map



## project highlights

- New Glass Entry
- New Interior Lighting
- Great Access to Hwy 101 & 880
- 100% HVAC
- Efficient Open Office Layout
- ±1,000 Amps @ 120/208 Volts, 3-Phase
- Showers in Men's and Women's Restroom
- Close Proximity to Mineta San Jose International Airport
- Walking Distance to 24 Hour Fitness, Restaurants and Hotels
- Light Rail Accessible
- ±3.5/1,000 Parking
- Potential for 3 Grade Level Door
- Approximately 69 Tons of HVAC
- APN 237-16-056
- ±3.25 Acres
- Available Now
- Divisible to ±11,343 SF & ±12,189 SF

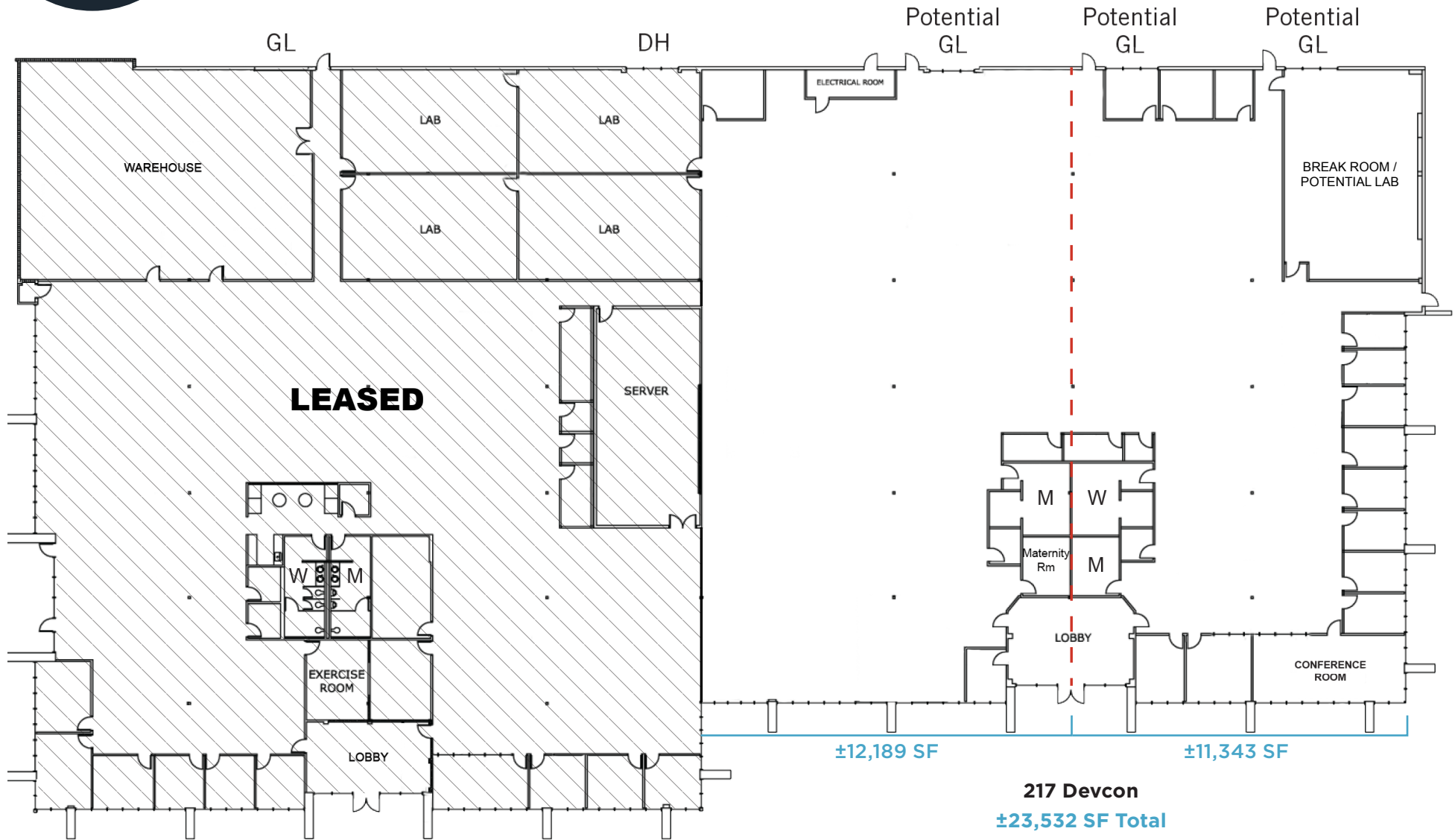


NEW GLASS ENTRIES





±23,532 SF (Divisible to ±11,343 SF & ±12,189 SF)

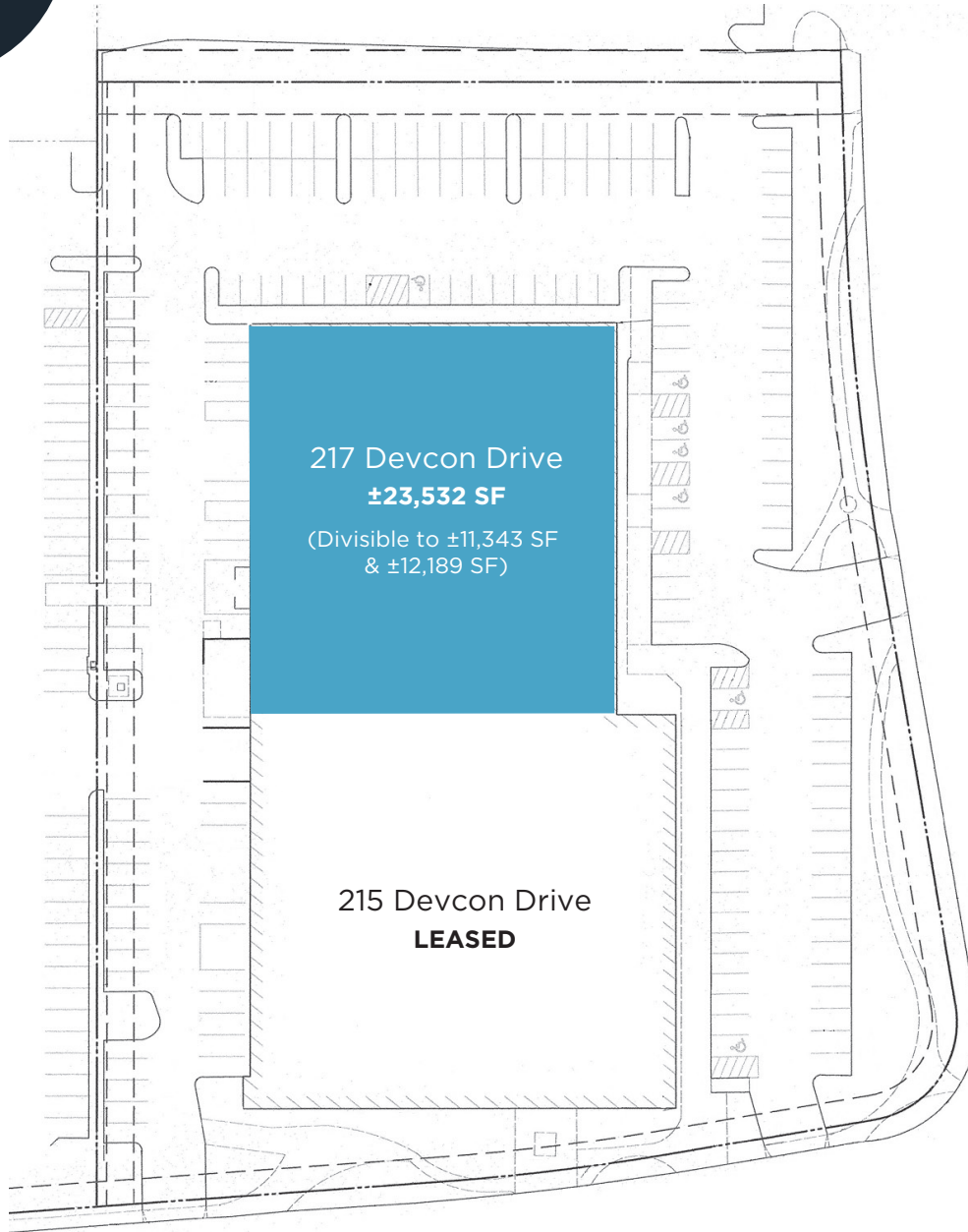







215 Devcon

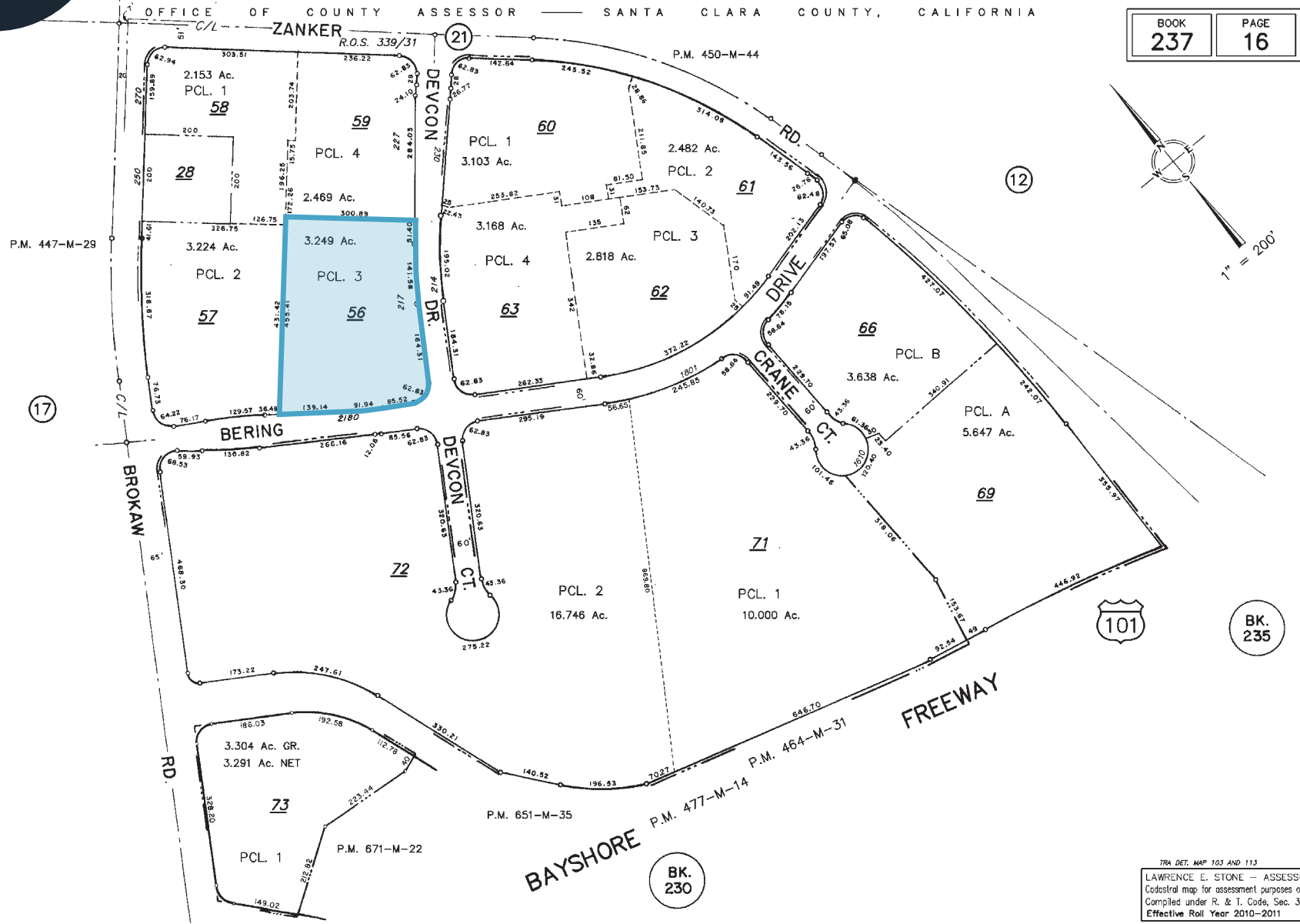
217 Devcon  
±23,532 SF Total



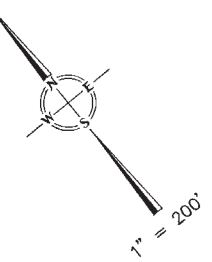
**±23,532 SQUARE FEET**  
(Divisible to ±11,343 SF & ±12,189 SF)



-  **Efficient Open Office Layout**
-  **New Interior Lighting**
-  **Close Proximity to Mineta San Jose International Airport**
-  **Great Access to Hwy 101 & 880**
-  **Showers in Men's & Women's Restroom**



BOOK <b>237</b>	PAGE <b>16</b>
--------------------	-------------------



TRA DET. MAP 103 AND 113  
LAWRENCE E. STONE - ASSESSOR  
Cadastral map for assessment purposes only.  
Compiled under R. & T. Code, Sec. 327.  
Effective Roll Year 2010-2011



**LODGING**

- 1 Wyndham Hotel
- 2 Vagabond Inn
- 3 E-Z8 Motel
- 4 Marriott Courtyard
- 5 Holiday Inn
- 6 Staybridge Suites
- 7 Fairfield by Marriott
- 8 Doubletree Hotel
- 9 Homewood Suites
- 10 Extended Stay America
- 11 Biltmore Hotel
- 12 Comfort Suites

**FINANCIAL INSTITUTIONS**

- 47 Bank of America
- 48 Comerica Bank
- 49 National Bank
- 50 Wells Fargo Bank
- 51 Bank of the West

**MAIL SERVICE**

- 52 Post Office
- 53 UPS Authorized Shipping Outlet
- 54 FedEx Drop Box

**RESTAURANTS**

- 13 Thai Orchid, Ume Chinese, Sangam Indian Cuisine, Olives Greek Cafe, Una Mas, Subway, Premier Pizza, Honba Sushi, Starbucks
- 14 Kerrie's Kafe
- 15 Mission Food Corporation
- 16 Royal Garden Chinese Restaurant & A Taste of Java
- 17 Togo's Eatery
- 18 Denny's
- 19 Mr Suave
- 20 Last Chances
- 21 McDonald's
- 22 Burger King
- 23 Bread Basket
- 24 Premier Pizza, Hobe's Restaurant, China Taste
- 25 Maxi's Restaurant
- 26 DD's Cafe
- 27 Ambrossi Food, Holyland, Big Ed's Buzzard BBQ
- 28 Senior Jalapeño, Honba Sushi, Starbuck's Coffee & Bagel Street Cafe
- 39 Subway
- 40 Amalfi's Grill
- 41 Cathy Chinese Cuisine
- 42 Specialty's Bakery & Cafe
- 43 San Fresco Cafe
- 44 Starbuck's/Chipotle/Subway, Hawaiian BBQ
- 45 Togo's Eatery
- 46 Madhunban Indian Cuisines, Quizno's, Vito Trattoria, Spencer's, Camille's, Sonoma Chicken Coop, Ladda Thai Cuisine

**ADDITIONAL SERVICES**

- 55 Matrix
- 56 24 Hour Fitness
- 57 Active Sports Club

Light Rail Station  
 Light Rail





**Frank D. Cox**

Senior Managing Director  
408.982.8422  
fcox@newmarkccarey.com  
CA RE License #00889881



**Mark Daschbach**

Executive Managing Director  
650.688.8540  
dash@newmarkccarey.com  
CA RE License #00871922



**Dave Haugh**

Senior Managing Director  
408.987.4171  
dhaugh@newmarkccarey.com  
CA RE License #00671547



The information contained herein has been obtained from sources deemed reliable but has not been verified and no guarantee, warranty or representation, either express or implied, is made with respect to such information. Terms of sale or lease and availability are subject to change or withdrawal without notice. 17-0747.02/18