

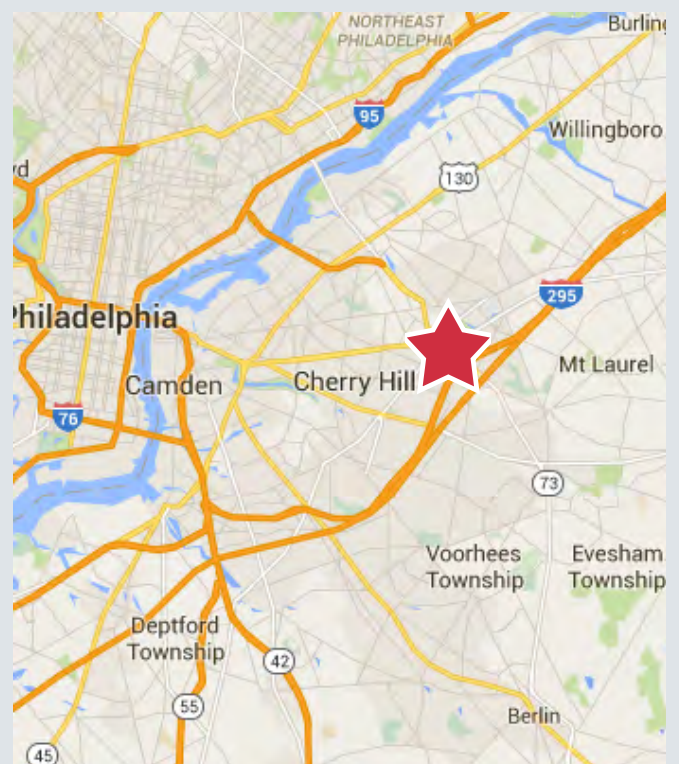


## 820 East Gate Drive

East Gate Industrial Park  
Mount Laurel, New Jersey

### Property Description

- 87,000 - 105,450± SF on 7.3 acres
- Eight (8) loading docks
- T-8 lighting
- Zoned Industrial
- 39' x 41' column spacing
- 24' clear ceiling height
- 2000 amp, 3 phase 480Y/277V electric service
- ESFR sprinklers



For more information:

**Scott Mertz, SIOR**

+1 856 802 6529 • [scott.mertz@naimertz.com](mailto:scott.mertz@naimertz.com)

NO WARRANTY OR REPRESENTATION, EXPRESS OR IMPLIED, IS MADE AS TO THE ACCURACY OF THE INFORMATION CONTAINED HEREIN, AND THE SAME IS SUBMITTED SUBJECT TO ERRORS, OMISSIONS, CHANGE OF PRICE, RENTAL OR OTHER CONDITIONS, PRIOR SALE, LEASE OR FINANCING, OR WITHDRAWAL WITHOUT NOTICE, AND OF ANY SPECIAL LISTING CONDITIONS IMPOSED BY OUR PRINCIPALS NO WARRANTIES OR REPRESENTATIONS ARE MADE AS TO THE CONDITION OF THE PROPERTY OR ANY HAZARDS CONTAINED THEREIN ARE ANY TO BE IMPLIED.

21 Roland Avenue  
Mount Laurel NJ 08054  
+1 856 234 9600

[naimertz.com](http://naimertz.com)





**820  
EAST GATE DRIVE**



**EXIT 4**

**Location Information**

- Less than 1 mile from Route 73, I-295 (Exit 36) and NJ Turnpike (Exit 4)
- Numerous dining, shopping and lodging options within minutes of the property
- 20 minutes from Center City Philadelphia, 90 minutes to New York City
- 10.5 miles to Balzano Marine Terminal in Camden, 75 miles to Newark Port

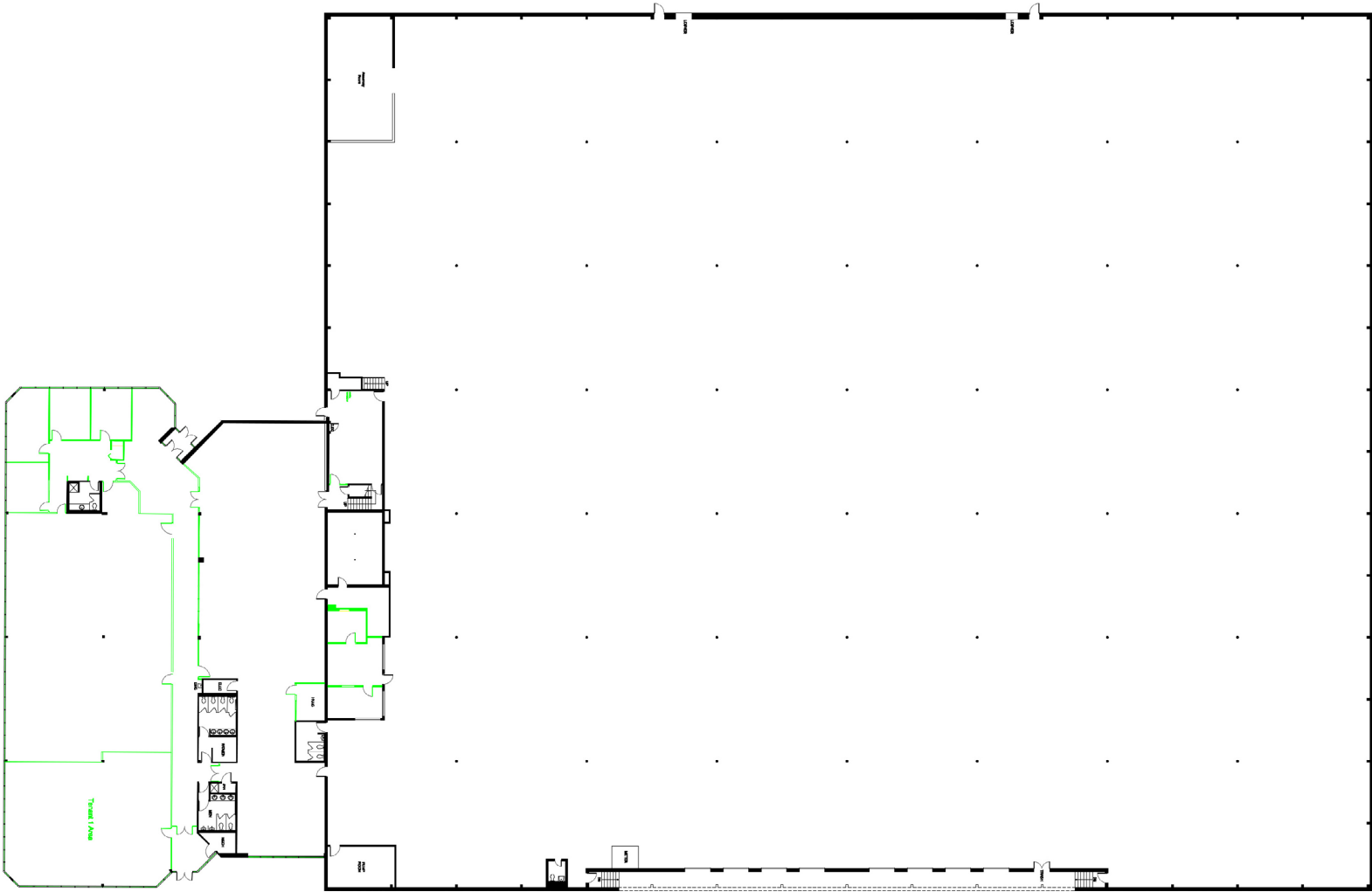
**Naimertz**

For more information:  
**Scott Mertz, SIOR**  
+1 856 802 6529 • [scott.mertz@naimertz.com](mailto:scott.mertz@naimertz.com)

21 Roland Avenue  
Mount Laurel NJ 08054  
+1 856 234 9600  
[naimertz.com](http://naimertz.com)

NO WARRANTY OR REPRESENTATION, EXPRESS OR IMPLIED, IS MADE AS TO THE ACCURACY OF THE INFORMATION CONTAINED HEREIN, AND THE SAME IS SUBMITTED SUBJECT TO ERRORS, OMISSIONS, CHANGE OF PRICE, RENTAL OR OTHER CONDITIONS, PRIOR SALE, LEASE OR FINANCING, OR WITHDRAWAL WITHOUT NOTICE, AND OF ANY SPECIAL LISTING CONDITIONS IMPOSED BY OUR PRINCIPALS NO WARRANTIES OR REPRESENTATIONS ARE MADE AS TO THE CONDITION OF THE PROPERTY OR ANY HAZARDS CONTAINED THEREIN ARE ANY TO BE IMPLIED.





For more information:

**Scott Mertz, SIOR**

+1 856 802 6529 • [scott.mertz@naimertz.com](mailto:scott.mertz@naimertz.com)

21 Roland Avenue  
Mount Laurel NJ 08054  
+1 856 234 9600

[naimertz.com](http://naimertz.com)