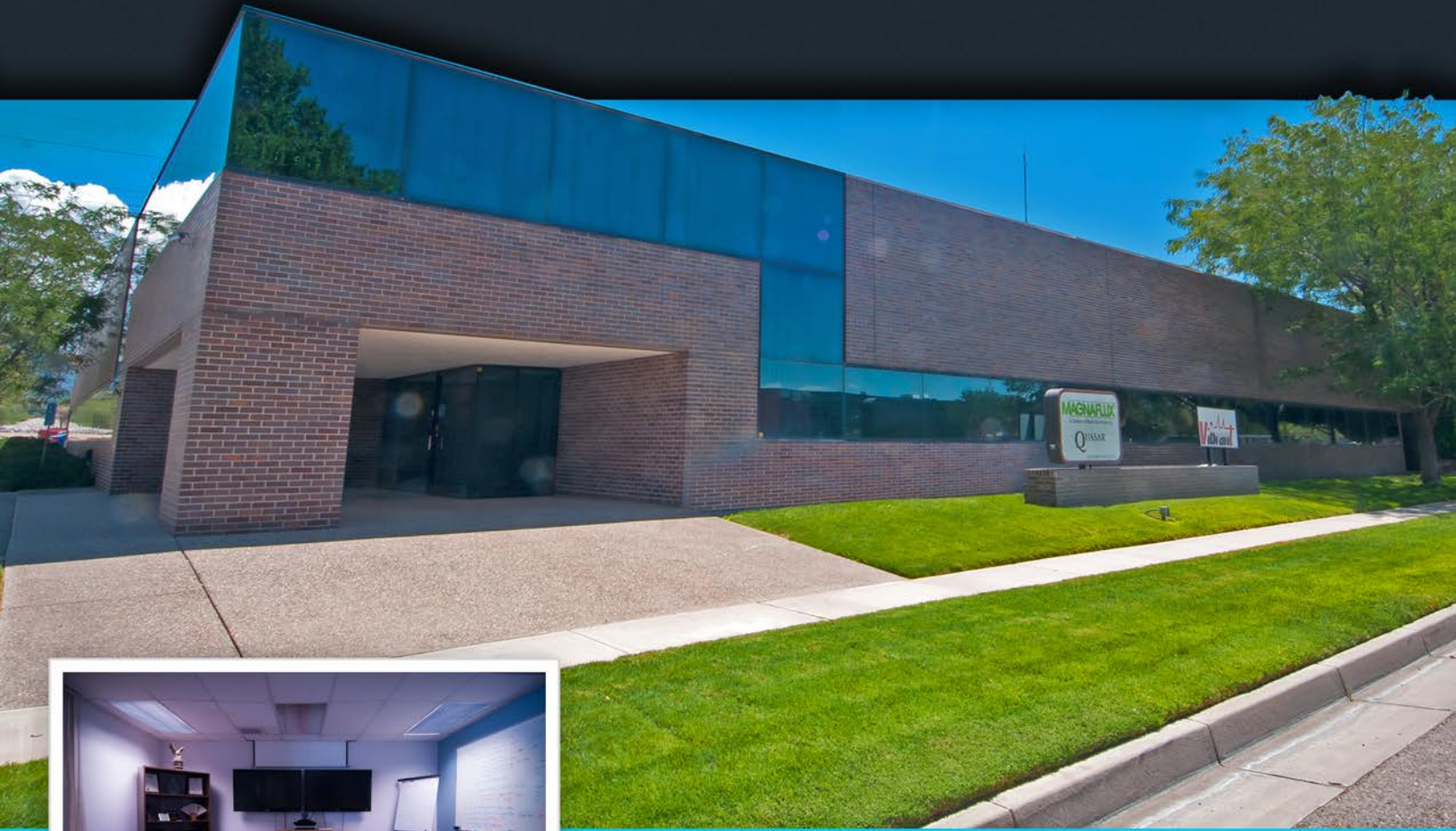


# 5550 MIDWAY PARK PLACE



*In the heart of the I-25 Corridor*

**15,000** Total RSF +/-

- Available February of 2014
- Easy access to/from Jefferson St. and Interstate 25
- Recently renovated
- Two exterior overhead doors

**Scott Throckmorton, SIOR**  
Scott@argusinvestmentrealty.com  
Phone: (505) 855-7602

**Michael Sheppard**  
Michael@argusinvestmentrealty.com  
Phone: (505) 855-7621

[www.argusinvestmentrealty.com](http://www.argusinvestmentrealty.com)





**Scott Throckmorton, SIOR**  
 Scott@argusinvestmentrealty.com  
 Phone: (505) 855-7602

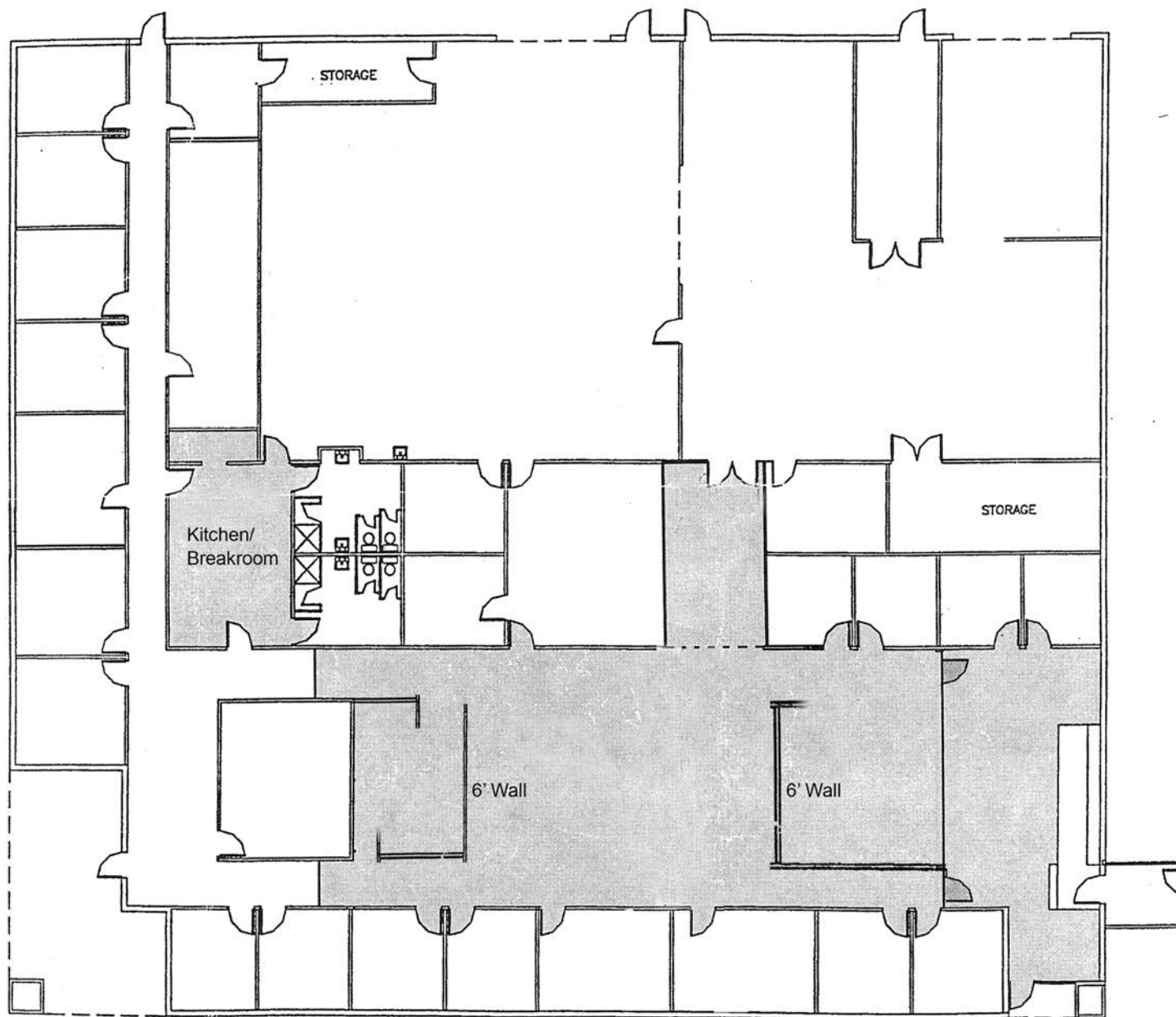
**Michael Sheppard**  
 Michael@argusinvestmentrealty.com  
 Phone: (505) 855-7621

[www.argusinvestmentrealty.com](http://www.argusinvestmentrealty.com)



The information above has been obtained from sources believed reliable. While we do not doubt the accuracy, we have not verified it and make no guarantee, warranty or representation about it. It is your responsibility to independently confirm its accuracy and completeness. Any projections, opinions, assumptions or estimates used are for example only and do not represent the current or future performance of the property. The value of this transaction to you depends on tax and other factors which should be evaluated by your tax, financial and legal advisors. You and your advisors should conduct a careful, independent investigation of the property to determine to your satisfaction the suitability of the property for your needs.

# 5550 MIDWAY PARK PLACE



**Scott Throckmorton, SIOR**  
Scott@argusinvestmentrealty.com  
Phone: (505) 855-7602

**Michael Sheppard, CCIM**  
Michael@argusinvestmentrealty.com  
Phone: (505) 855-7621

[www.argusinvestmentrealty.com](http://www.argusinvestmentrealty.com)

