



205

MULBERRY STREET

BETWEEN SPRING & KENMARE

DETAILS :

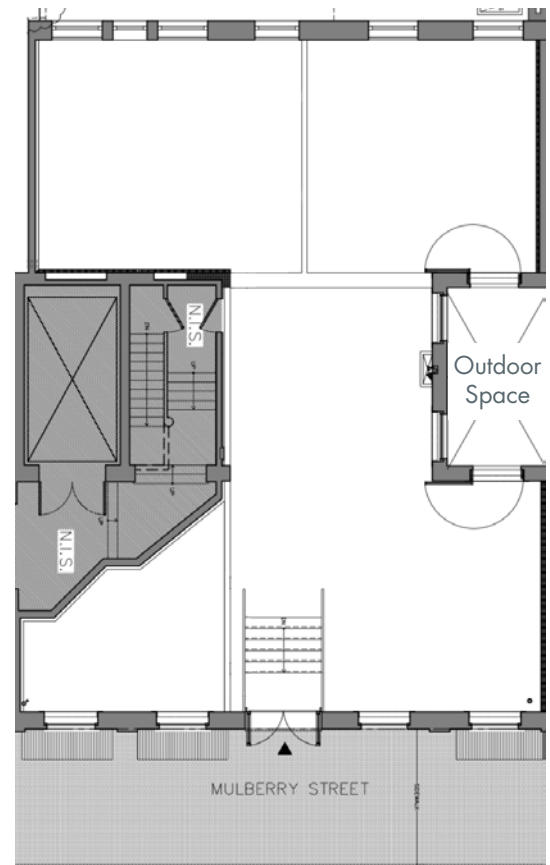
Ground Level.....2,500 Square Feet
Frontage.....40'
Ceiling Height.....11' 10"
Term.....Negotiable
Possession.....Immediate
Asking Rent.....Upon Request

- Wide frontage and oversized signage flag
- Small open-air atrium on the north side of the space
- Directly across from 75 Kenmare, a new 35-unit luxury condominium building and the DeSalvio Playground (undergoing renovations)
- Terrific natural light from 15 windows
- Storage and private bathroom
- Near the Spring Street 4/6 subway station
- Original wood floors, exposed brick elements
- Built circa 1873 for NY Police Department



NEIGHBORS:

- Noah
- Tartinery
- CAVA Grill
- Chop't
- Taco Dumbo
- Kiehl's
- Sweetgreen
- Bluestone Lane Coffee
- Westerlind
- Ruby's
- Brandy Melville
- Fresh
- L'Occitane
- Chef's Club Counter
- Duane Reade
- Malia Mills
- Square
- Taim
- Bulaboosta
- Pasquale Jones



Ground Level



Outdoor Space



PLEASE CONTACT:

Christopher Owles
212.604.9002
chris@sinvin.com

Margie Sarway
646.673.8742
margie@sinvin.com

 **SINVIN**
COMMERCIAL REAL ESTATE & ADVISORY

