



**BERKSHIRE  
HATHAWAY**  
HomeServices

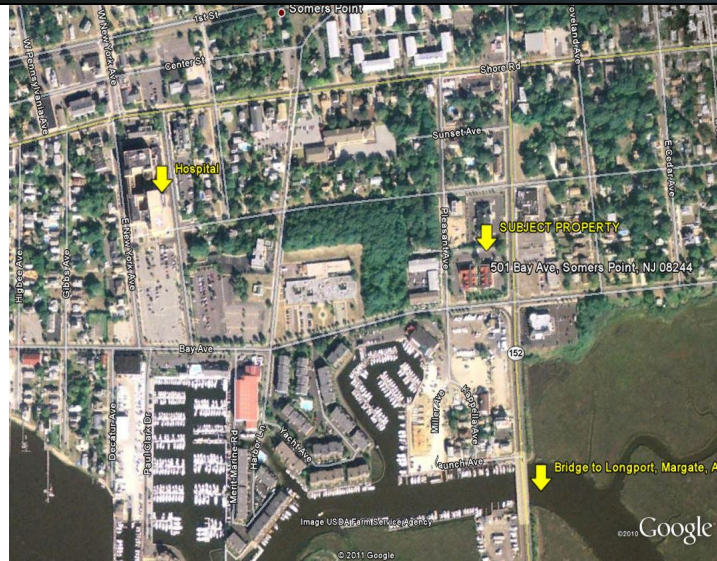
**Fox & Roach,  
REALTORS®**



**Richard "Rich" Baehrle**  
Broker-Salesperson

1001 Tilton Road Northfield, NJ 08225  
Office (609) 641-0011 ♦ Fax (609) 677-4477

# CLASS "A" VICTORIAN OFFICES



- ◆ Located Near Shore Memorial Hospital
- ◆ Easy Access to Longport, Margate & Ocean City
- ◆ 19,500 Total Square Footage
- ◆ Efficient Gas Heat, Central Air
- ◆ Tenants Include Children's Hospital of Phila., LabCorp, Bacharach Rehab, etc.
- ◆ Prime Corner Offices with Water Views
- ◆ 2 Suites Avail. 1,250 & 2,058 SF

**501-505 Bay Avenue  
Somers Point  
BAYSIDE COMMONS**

**Join The Area's Most Respected Professionals!**

**FOR LEASE:**

**\$17/SF + CAM the gross equates  
to app. \$23**

**CALL RICHARD "RICH" BAEHRLE AT 609-226-6680 (CELL)**

All information is deemed to be from sources that are reliable, however, the property Owner and Berkshire Hathaway Home Services, Fox & Roach, Realtors (it's principles, employees or agents) make no warranty as to the accuracy of the information contained herein. This information is submitted subject to errors or omissions which may be changed without liability upon discovery, and changes of availability and terms without prior notice. There are many factors that effect property value, such as zoning/planning issues and construction codes, environmental concerns such as buried tanks, asbestos, hazardous spills, lead paint, radon, etc; pest infestation, and the prospective Tenant or Purchaser agrees to take full responsibility for adequately investigating any potential conditions that may effect their ownership and usage of real estate. Furthermore, they are advised to retain competent Legal, Financial, Construction, Architectural, Engineering, or similar expertise and assistance