

6200 MERRIAM DRIVE
MERRIAM, KANSAS 66203

CONTRACTOR/SERVICE BUILDING FOR LEASE | 4,772± SF

PROPERTY FEATURES

- Excellent Central Kansas City Location
- One Drive-In Door (10' x 10') With Ability To Add More
- 400 Amp, 3-Phase Power
- Floor Drains In Shop Area
- Mezzanine Storage
- Fenced Outside Storage
- Zoning: I-1, Light Industrial

ADDITIONAL INFO

TOTAL SIZE	4,772± SF (1,150± SF Office)
LEASE RATE	\$3,000/Month Net
TAXES (2017)	\$6,643.38



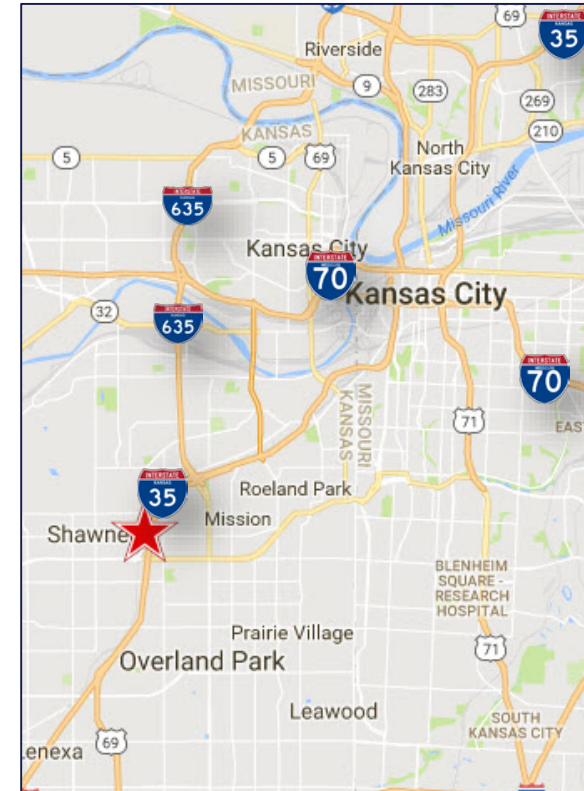
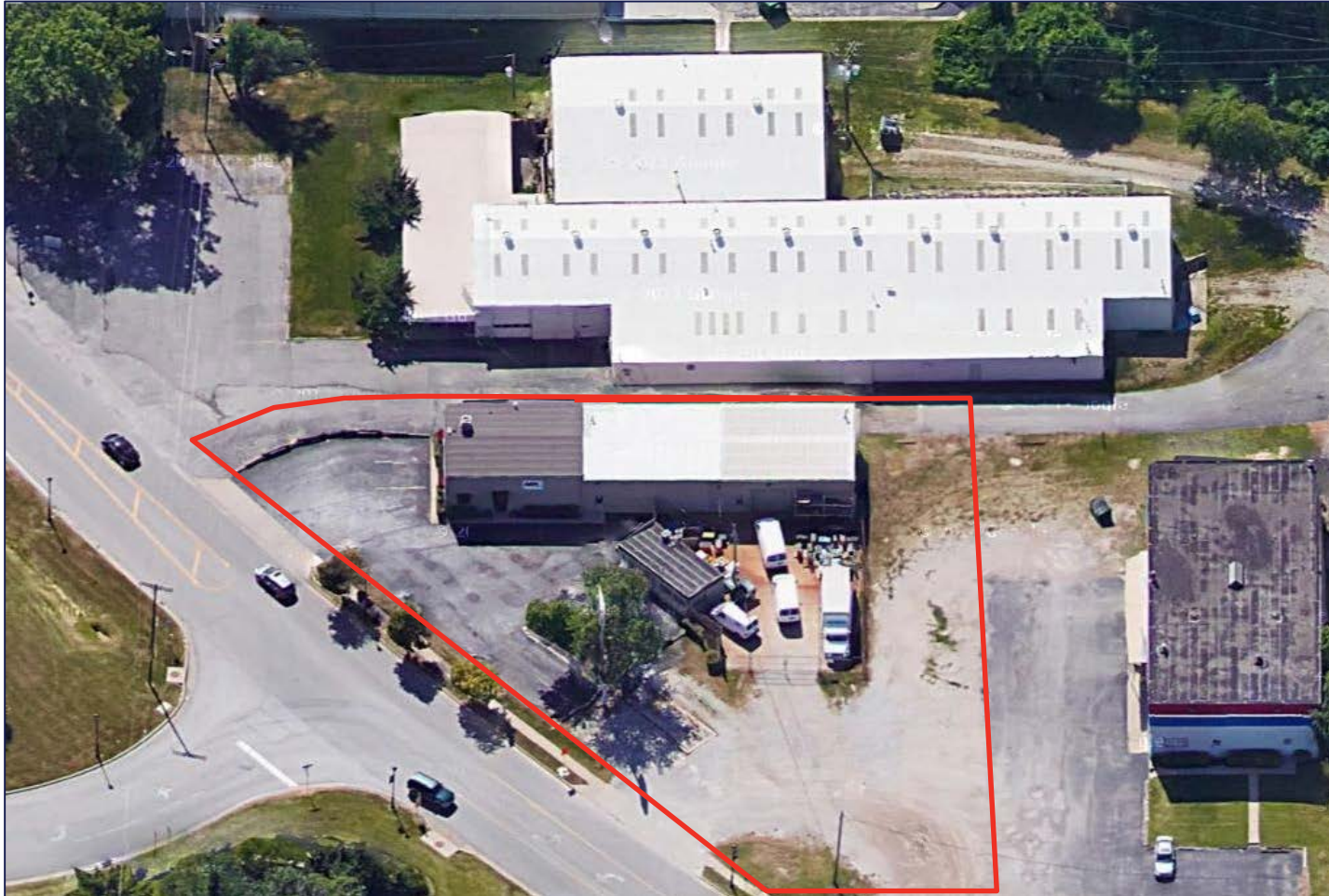
For more information, please contact:

MATTHEW SEVERNS, SIOR, CCIM
Industrial Brokerage
816.936.8543 direct
mseverns@kessingerhunter.com

KESSINGER/HUNTER & COMPANY, LC
2600 Grand Boulevard, Suite 700
Kansas City, MO 64108
816.842.2690
www.kessingerhunter.com

6200 MERRIAM DRIVE, MERRIAM, KANSAS 66203

Contractor/Service Building For Lease



For more information, please contact:

MATTHEW SEVERNS, SIOR, CCIM
Industrial Brokerage
816.936.8543 direct
mseverns@kessingerhunter.com

KESSINGER/HUNTER & COMPANY, LC
2600 Grand Boulevard, Suite 700
Kansas City, MO 64108
816.842.2690
www.kessingerhunter.com