

800 MENLO AVENUE, MENLO PARK



New Suite Available: ±2,564 SF



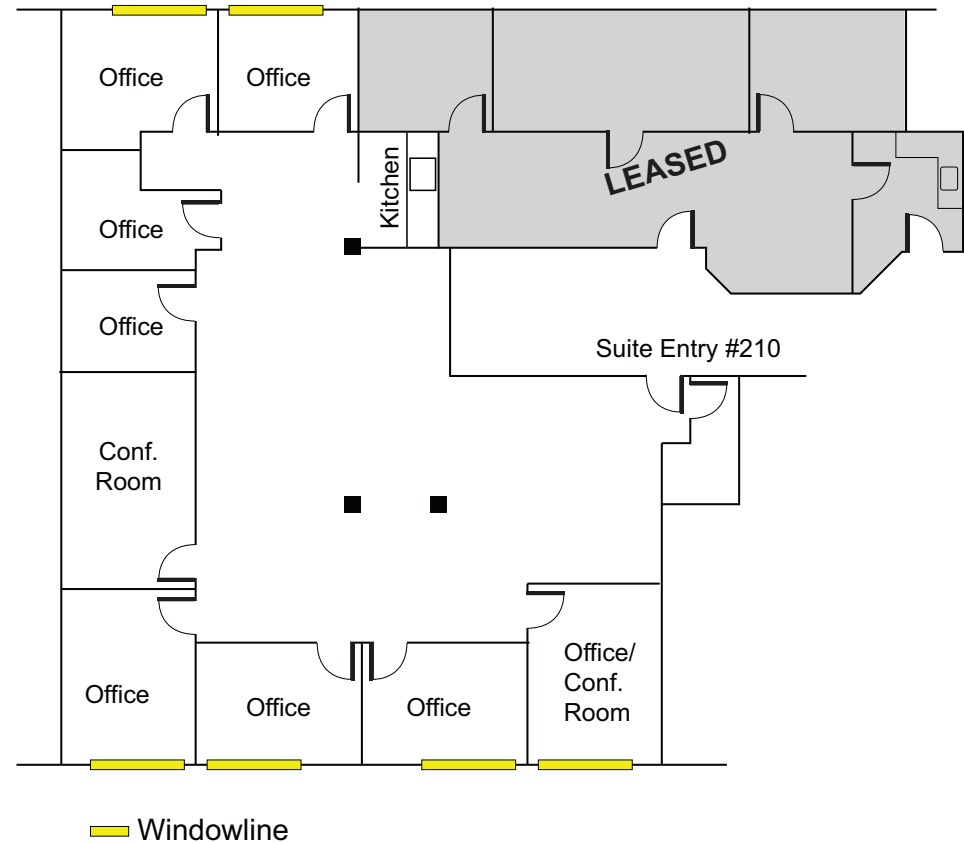
Cherie Wittry Senior Managing Director 650.688.8523 cwittry@ngkf.com CA RE License #00863251

245 Lytton Avenue, Suite 150, Palo Alto, CA 94301 www.ngkf.com

The distributor of this communication is performing acts for which a real estate license is required. The information contained herein has been obtained from sources deemed reliable but has not been verified and no guarantee, warranty or representation, either express or implied, is made with respect to such information. Terms of sale or lease and availability are subject to change or withdrawal without notice. 16-1300-05/18

800 MENLO AVENUE, MENLO PARK

- Suite 210: ±2,564 SF
 - Above Standard Improvements
 - Perimeter Privates with Open Area
 - Glass Panel Doors
 - Office /Conference Rooms - Glass Sidelights
 - Excellent Windowline
 - 6-7 Offices/1-2 Conference Rooms
- Located in the Heart of Downtown Menlo Park
- Short Walk to Restaurants, Retail and Caltrain
- Adjacent to Improved City Parking Lots
- Building Lobby: Glass Entry Doors and Marble Entry Flooring
- Call Agent to Tour



Cherie Wittry Senior Managing Director 650.688.8523 cwittry@ngkf.com CA RE License #00863251

245 Lytton Avenue, Suite 150, Palo Alto, CA 94301 www.ngkf.com