

# 3155 Route 10 - Professional Plaza Denville, NJ



## FOR LEASE

### **BUILDING SPECIFICATIONS:**

**Total Building Size:** 42,000 SF  
**Available Space:** 4,446 SF, with divisions of  
2,700 SF and 1,800 SF  
**Parking:** 5/1,000 SF  
**Use:** General or medical office  
**Rental Rate:** \$18.00 PSF plus Utilities

**Comments:** Convenient to all major highways. On-site daycare available. Nearby amenities include restaurants, shopping, ATM's, hotels, etc.

*For more information, please contact:*

**Brian Wilson, SIOR**  
[bwilson@resource-realty.com](mailto:bwilson@resource-realty.com)

**Gregory J. Sabato, SIOR**  
[gsabato@resource-realty.com](mailto:gsabato@resource-realty.com)

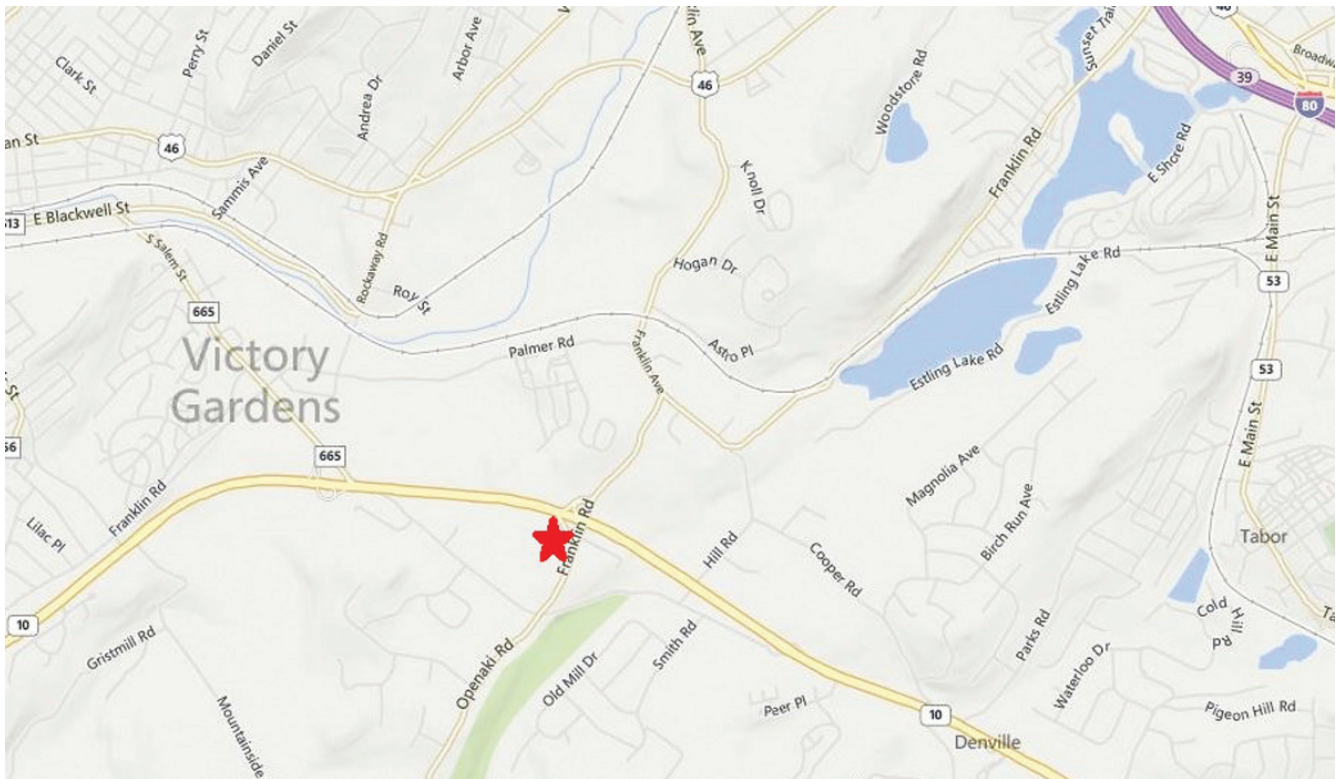
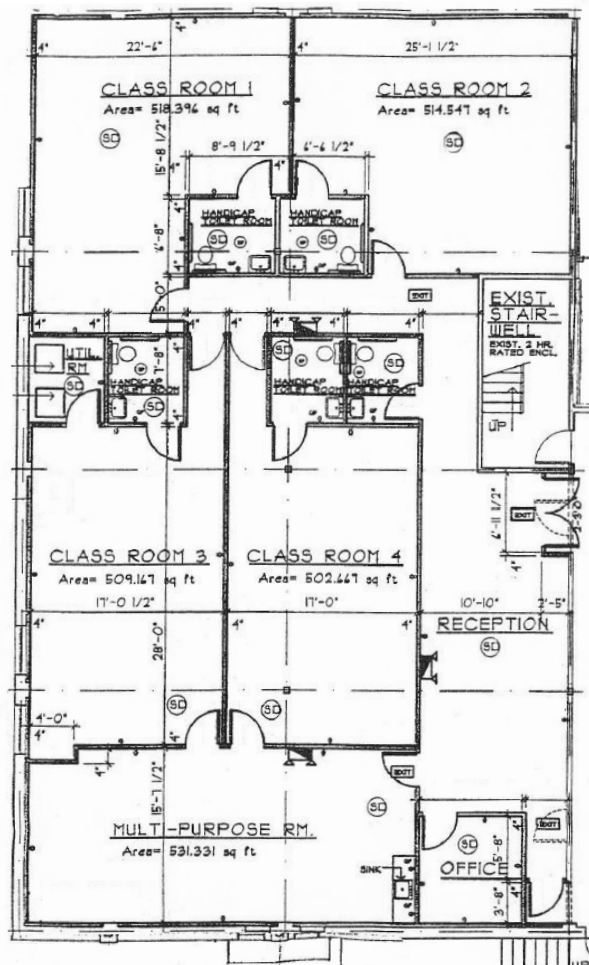
**973-299-0900**

*Exclusive Leasing Agent:*



**Resource Realty**  
Corporate Real Estate Services

[www.resource-realty.com](http://www.resource-realty.com)



All information furnished is from sources deemed reliable. No representation is made as to the accuracy thereof and it is submitted subject to error, omission, change of price, prior sale or lease and withdrawal without notice. Any commission due cooperating brokers is subject to all of the terms and conditions upon which we and our clients have agreed.

Exclusive Leasing Agent:



973-299-0900  
[www.resource-realty.com](http://www.resource-realty.com)