



FOR LEASE

500 INDUSTRIAL LANE

MIDDLETOWN | PENNSYLVANIA



±115,890 SF
AVAILABLE

GERRY BLINEBURY
Executive Managing Director
+1 717 231 7291
gerry.blinebury@cushwake.com

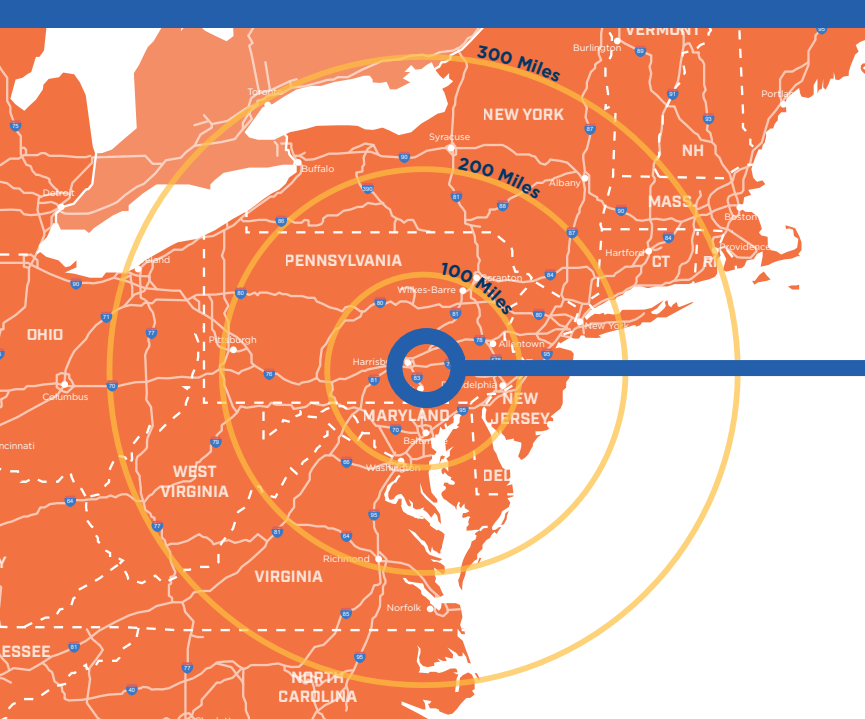
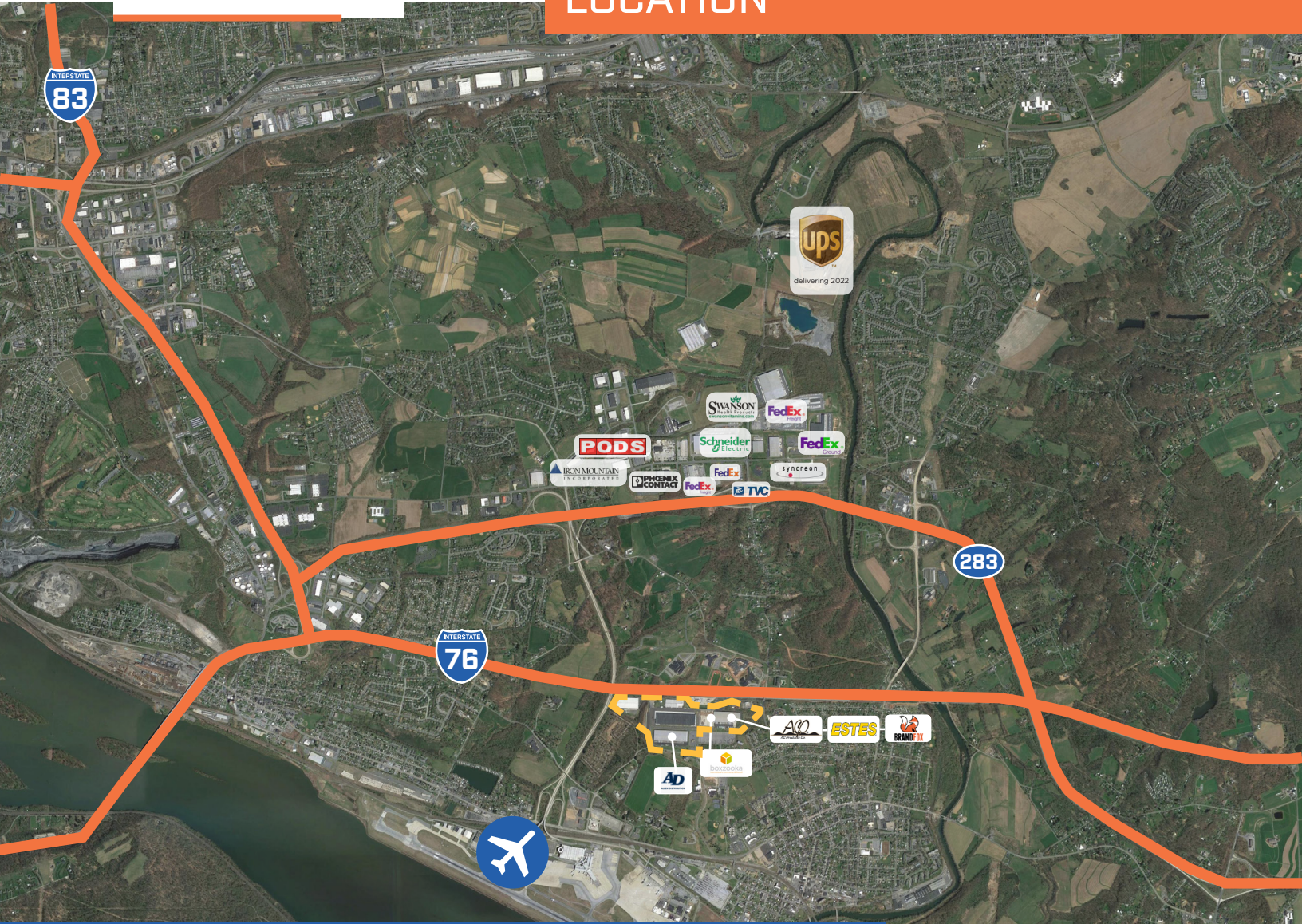
ADAM CAMPBELL
Executive Managing Director
+1 717 231 7292
adam.campbell@cushwake.com

ALLIE RANK
Senior Associate
+1 717 231 7461
allie.rank@cushwake.com



cushmanwakefield.com

LOCATION



INTERSTATES

	4 MILES	9 MINS
	7 MILES	10 MINS
	11 MILES	14 MINS

HARRISBURG AIRPORT

	1.7 MILES	4 MINS
--	-----------	--------

MAJOR CITIES

HARRISBURG	12 MILES	19 MINS
LANCASTER	31 MILES	38 MINS
BALTIMORE, MD	84 MILES	1 HR, 25 MINS
PHILADELPHIA	102 MILES	1 HR, 54 MINS
WASHINGTON, DC	129 MILES	2 HRS, 29 MINS
NEW YORK, NY	177 MILES	3 HRS, 4 MINS

CAPITAL LOGISTICS CENTER



CAPTIAL LOGISTICS CENTER is a 1.4 million square foot industrial park situated at the confluence of I-76, (PA Turnpike), I-283, I-83 and I-81.



REACH 35% of the total U.S. population and 50% of the Canadian population within a one day truck drive.

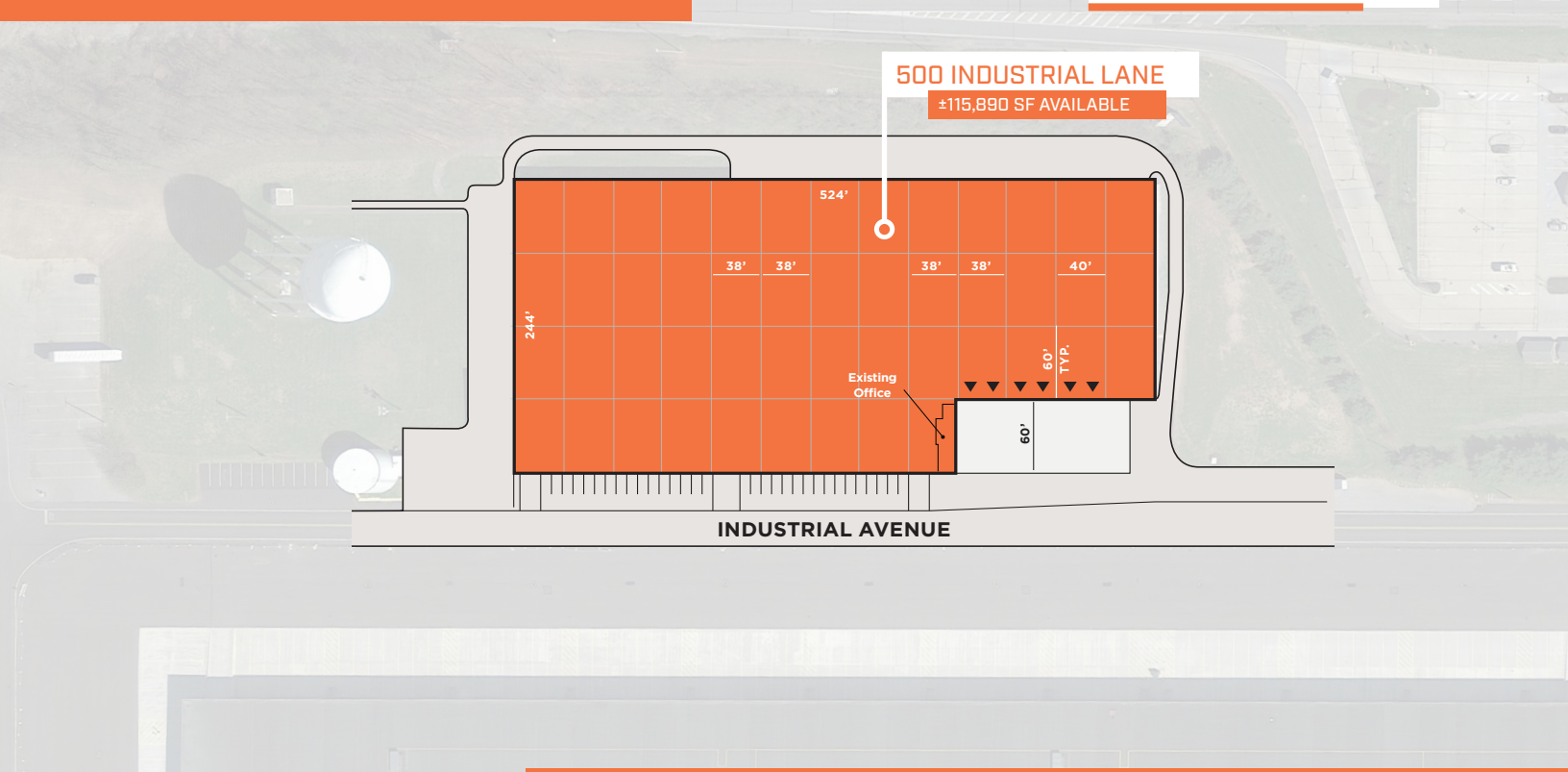


CONVENIENTLY LOCATED within a 3-hour truck drive to major cities including New York, Philadelphia, Baltimore and Washington, D.C.



ACCESS multiple UPS and FedEx ground and freight facilities within minutes.

PROPERTY SPECS



SQUARE FEET

± 115,890 SF

CLEAR HEIGHT

22'-31'

DOCK DOORS

6

AUTO PARKING

± 35

TRAILER PARKING

± 4

TOTAL BUILDING SIZE	±115,890 SF (244' x 524')
COLUMN SPACING	40' x 60'
OFFICE AREA	1%
PARKING	±35 Car Spots; ±4 Trailer Spots
YEAR BUILT	1970, Renovated 1996
SITE AREA	7.84 acres
ZONING	"I" - Industrial
FLOORS	6" unreinforced concrete floor
DOCK DOORS	6 Dock Doors
LOADING BAY	40' x 60'
FIRE PROTECTION	Wet System
LIGHTING	T-5
CONSTRUCTION	Insulated Pre-Engineered Metal Panels
HVAC SYSTEMS	Warehouse - Gas-Fired Unit Heaters
CLEAR HEIGHT	22' - 31'
ROOF	Built Up Roof System

GERRY BLINEBURY

Executive Managing Director
+1 717 231 7291
gerry.blinebury@cushwake.com

ADAM CAMPBELL

Executive Managing Director
+1 717 231 7292
adam.campbell@cushwake.com

ALLIE RANK

Senior Associate
+1 717 231 7461
allie.rank@cushwake.com

