



RETAIL SPACE FOR LEASE

205 STOCKHAM BOULEVARD

RIGBY, IDAHO | 83442

COMMERCIAL



PROPERTY INFORMATION:

Bldg Type:	Retail	Available:	Immediately
Bldg Size:	10,000 SF	Lease Type:	NNN
Parking:	Ample	Est. NNN	\$3.50/SF

AVAILABLE SPACE:

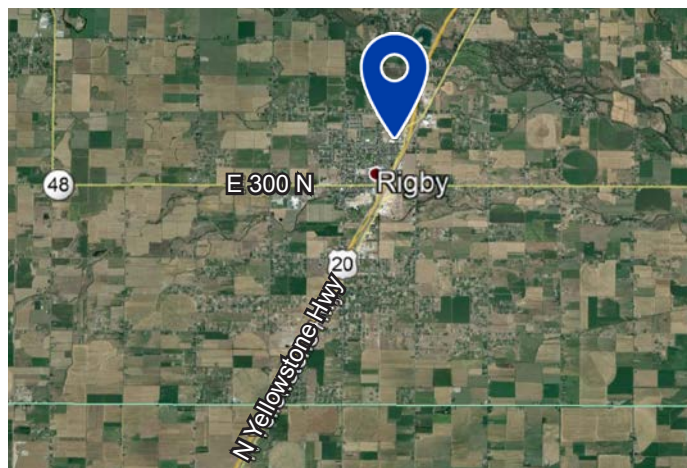
SPACE:	RSF:	RATE:
Suite C	Approx. 1,500 SF	\$12/SF, NNN
Suite D	Approx. 1,500 SF	\$12/SF, NNN
Suite E	Approx. 1,500 SF	\$12/SF, NNN

CONTACT

Dustin Mortimer

dustin@tokcommercial.com

208.227.8148



LISTING COMMENTS:

Highway 20 access via North Rigby exit.

Great co-tenants with The Great Bambino, Pizza Hut, and Salon Savvy

Area tenants include Wendy's, Westmark Credit Union, Bank of Commerce, O'Reilly's Auto Parts

Approximately 4,500 square feet, divisible to three units

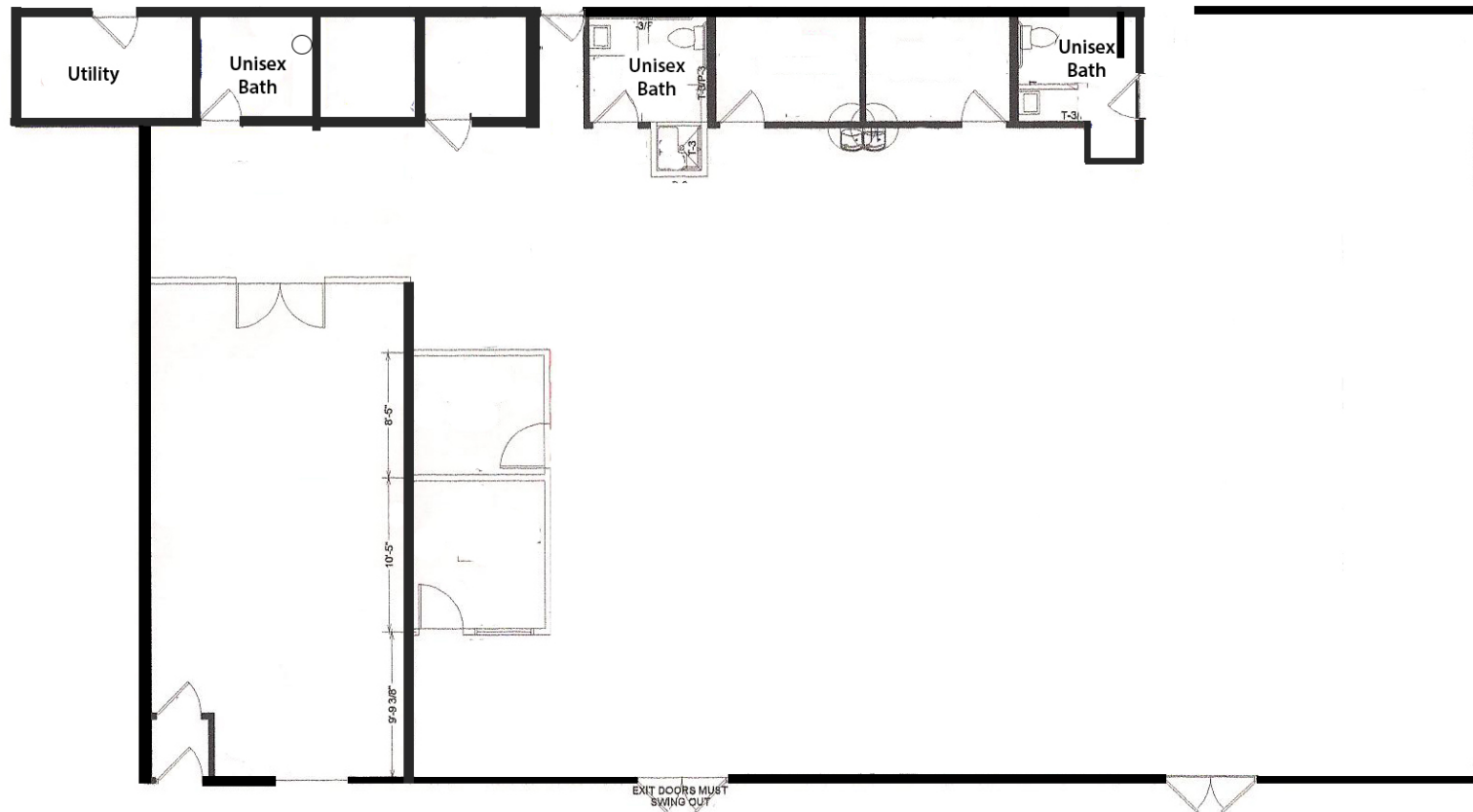
Great for office, medical, and retail



RETAIL SPACE FOR LEASE

205 STOCKHAM BOULEVARD

RIGBY, IDAHO | 83442





RETAIL SPACE FOR LEASE

205 STOCKHAM BOULEVARD

RIGBY, IDAHO | 83442

COMMERCIAL



Approximately **4,500 total square feet** available
Divisible to three units
Great for **office, medical, and retail** uses



RETAIL SPACE FOR LEASE

205 STOCKHAM BOULEVARD

RIGBY, IDAHO | 83442

COMMERCIAL





RETAIL SPACE FOR LEASE

205 STOCKHAM BOULEVARD

RIGBY, IDAHO | 83442

COMMERCIAL

DEMOGRAPHICS:

2018	1 Mi.	3 Mi.	5 Mi.
Population:	3,333	11,731	19,850
Avg HH Income:	\$61,822	\$70,909	\$73,742
Total Employees:	1,952	3,086	3,967

