

For Sale or Lease

Nob Hill Office Building

2330 NW Everett St
Portland, OR 97210

3,523 SF 4 story office building

4,400 SF land

4 floors - up to 3 unique tenant spaces

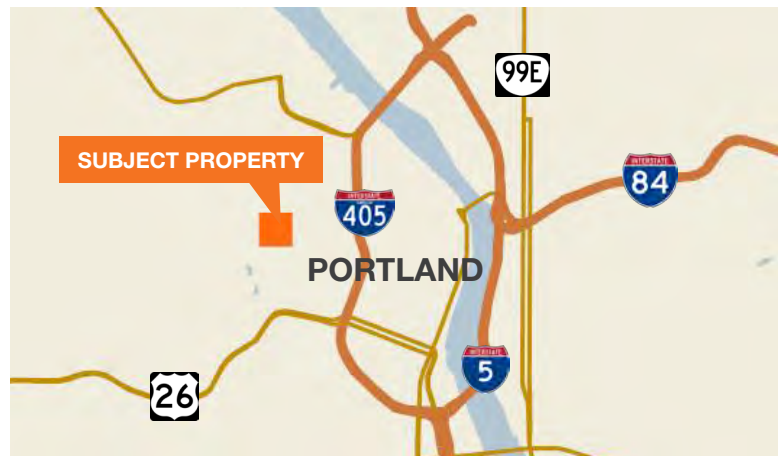
Recent high quality remodel with restrooms on 3 floors

Possible income property

off street parking

Rate: \$27.50 Full Service

Price: \$2,100,000 **reduced to \$1,950,000**



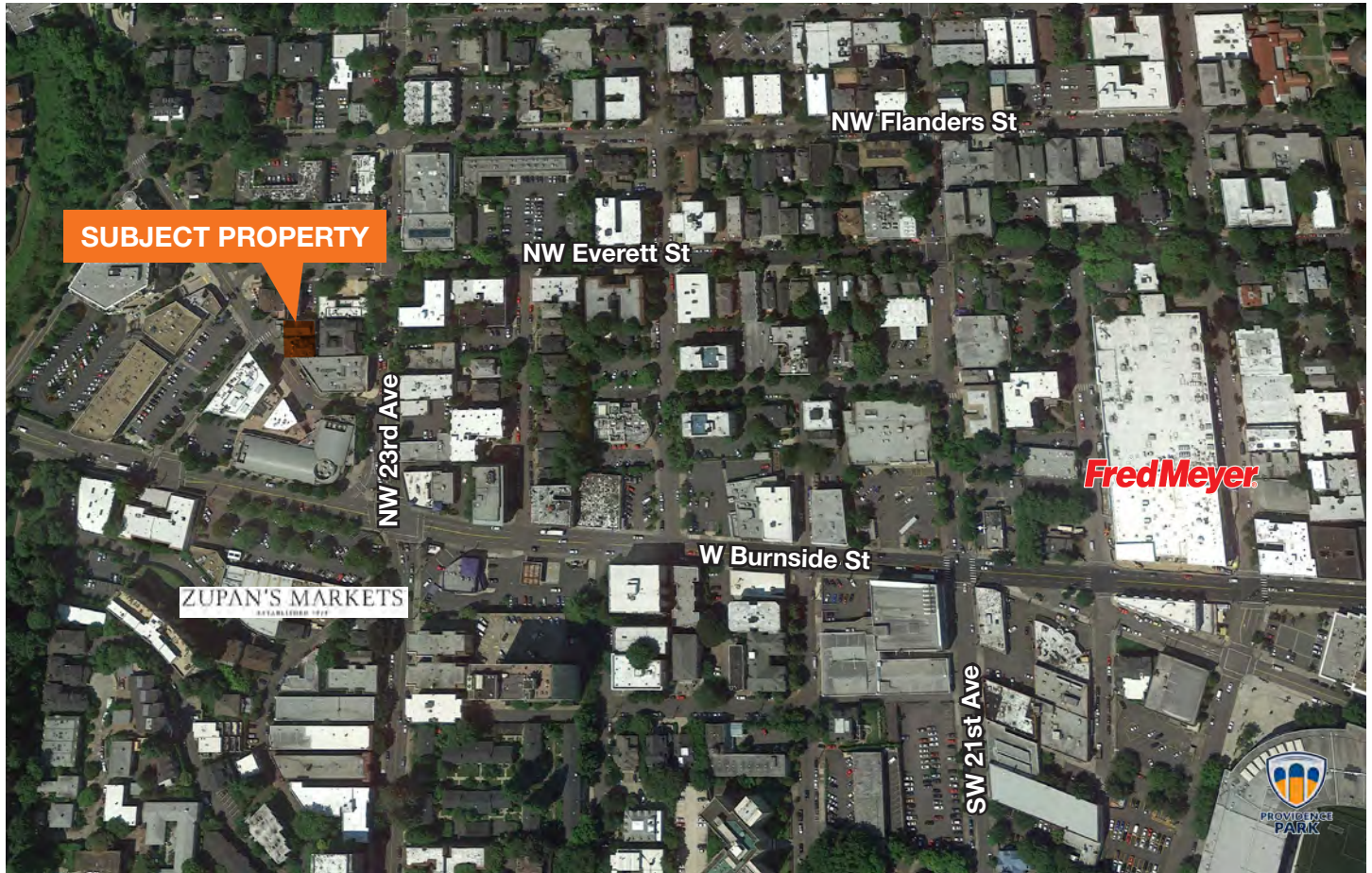
Contact

Cliff Finnell, SIOR

503.221.2295

cfinnell@kiddermathews.com

2330 NW Everett St



Contact

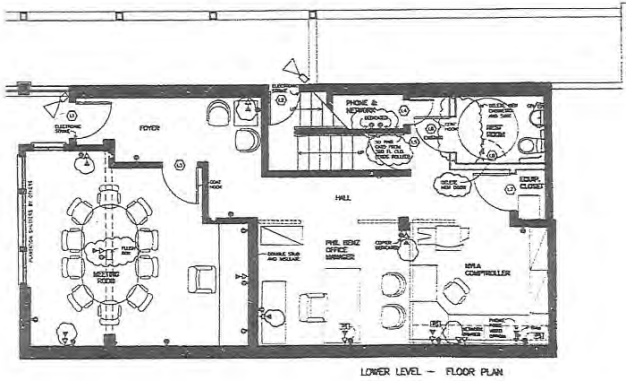
Cliff Finnell, SIOR

503.221.2295

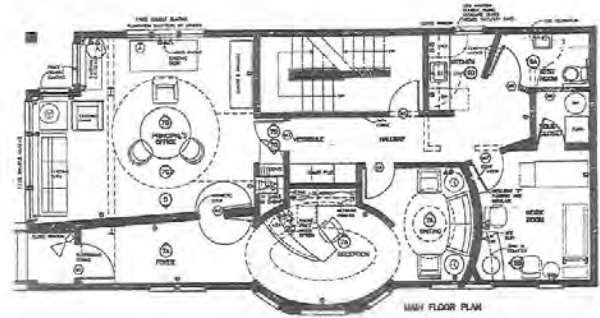
cfinnell@kiddermathews.com

2330 NW Everett St

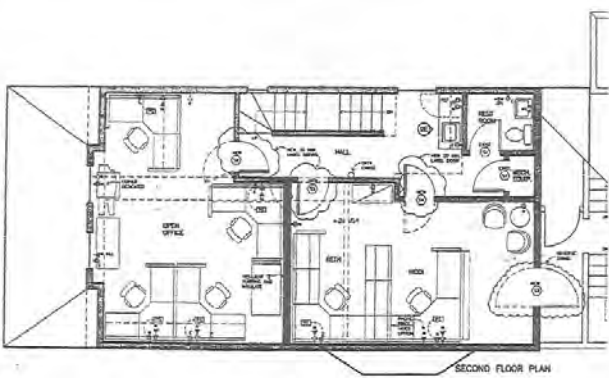
Lower Level Floor Plan | ±968 SF



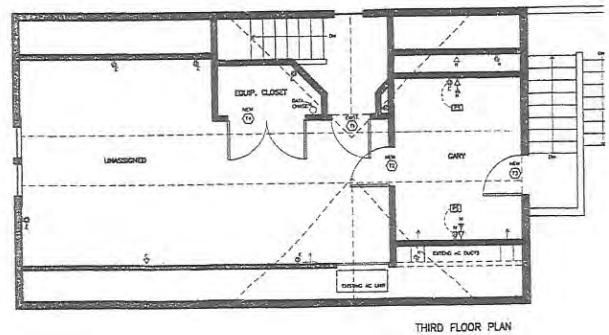
Main Entry Level | ±1,100 SF



Second Floor | ±836 SF



Upper Floor | ±619 SF



Contact

Cliff Finnell, SIOR

503.221.2295

cfinnell@kiddermathews.com