



1604 S.E. 39th Street

Oklahoma City, Oklahoma 73129

PROPERTY HIGHLIGHTS

- 100% Occupied
- 1,250 SF Warehouse
- 1,000 SF Office with Reception Area, 4 Offices & Break Area
- (3) 10' Overhead Doors
- Fenced Yard
- 10' Ceiling Height
- 3 Phase/400 Amp Power
- 2 Ton Crane
- Fully Insulated
- Heated Warehouse
- 1 Block to I-35
- Current Lease Expires: 2-28-2020



TOTAL SF	2,250 SF MOL
LAND IN ACRES	0.47 MOL
ZONING	I-2
AD VALOREM TAXES	\$1,021.36
BUILT	1982

www.naisullivangroup.com

Bob Sullivan, CCIM

Cell: 1 405 641 9798

rsullivan@ccim.net

NO WARRANTY OR REPRESENTATION, EXPRESS OR IMPLIED, IS MADE AS TO THE ACCURACY OF THE INFORMATION CONTAINED HEREIN, AND THE SAME IS SUBMITTED SUBJECT TO ERRORS, OMISSIONS, CHANGE OF PRICE, RENTAL OR OTHER CONDITIONS, PRIOR SALE, LEASE OR FINANCING, OR WITHDRAWAL WITHOUT NOTICE, AND OF ANY SPECIAL LISTING CONDITIONS IMPOSED BY OUR PRINCIPALS NO WARRANTIES OR REPRESENTATIONS ARE MADE AS TO THE CONDITION OF THE PROPERTY OR ANY HAZARDS CONTAINED THEREIN ARE ANY TO BE IMPLIED.

4045 N.W. 64th Street, Suite 340
Oklahoma City, Oklahoma 73116
Office: 1 405 840 0600
Fax: 1 405 840 0610

1604 S.E. 39th Street
Oklahoma City, OK 73129

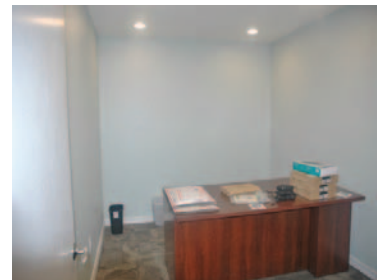
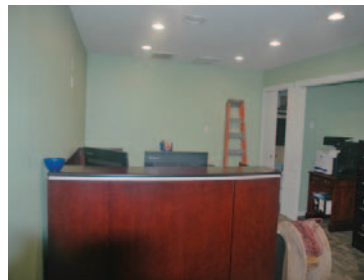
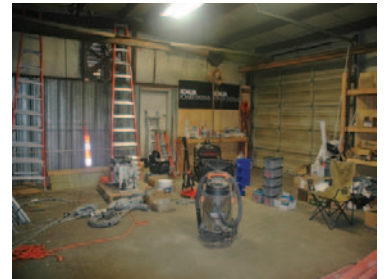


LOCATION HIGHLIGHTS

- Dimensions: 137.50' x 150'
- Frontage: 150' on S.E. 39th Street
- Minutes from Downtown OKC & Tinker Air Force Base

DEMOGRAPHICS

Population		
1 Mile: 4,672	3 Mile: 69,887	5 Mile: 215,678
Average Household Income		
1 Mile: \$27,970	3 Mile: \$34,460	5 Mile: \$38,590
Total Households		
1 Mile: 1,617	3 Mile: 25,517	5 Mile: 81,063



Bob Sullivan, CCIM

Cell: 1 405 641 9798

rsullivan@ccim.net

www.naisullivangroup.com

NAI Sullivan Group

4045 N.W. 64th Street, Suite 340
Oklahoma City, Oklahoma 73116
Office: 1 405 840 0600
Fax: 1 405 840 0610