

23847 INDUSTRIAL PARK DRIVE
FARMINGTON HILLS, MICHIGAN



**SIGNATURE
ASSOCIATES**
KNOW SIGNATURE | KNOW RESULTS

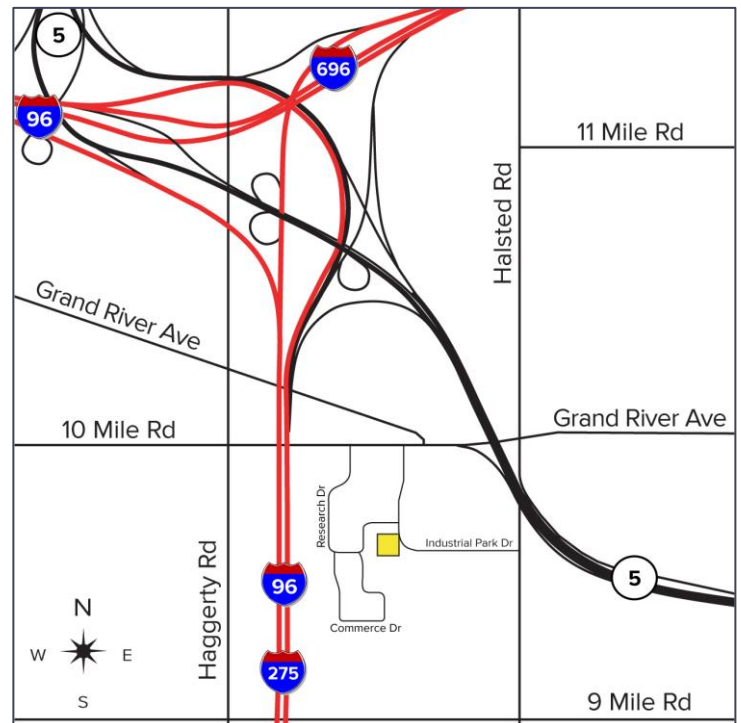
INDUSTRIAL AVAILABLE
19,000 - 39,461 Square Feet Available

HEAVY POWER WITH DOCKS



PROPERTY FEATURES

- 19,000 - 39,461 square feet available
- 5,000 square feet of office space
- Zoned L-1
- Located on 2.670 acres with 110 parking spaces
- (4) truckwells and (1) grade level door, more possible
- 100% air-conditioned warehouse
- Fire suppression
- Manufacturing or warehouse/distribution
- Current ownership plans to upgrade and update interior and exterior
- Building can be divided
- 2000 amps, 480V with 300 kVA, 208 3-phase transformer
- Contact broker for lease rate and sale price



For more information, please contact:

JEFF LEMANSKI
(248) 359 0641

jlemanski@signatureassociates.com

CHRISTOPHER M. D'ANGELO
(248) 948 0109

cdangelo@signatureassociates.com

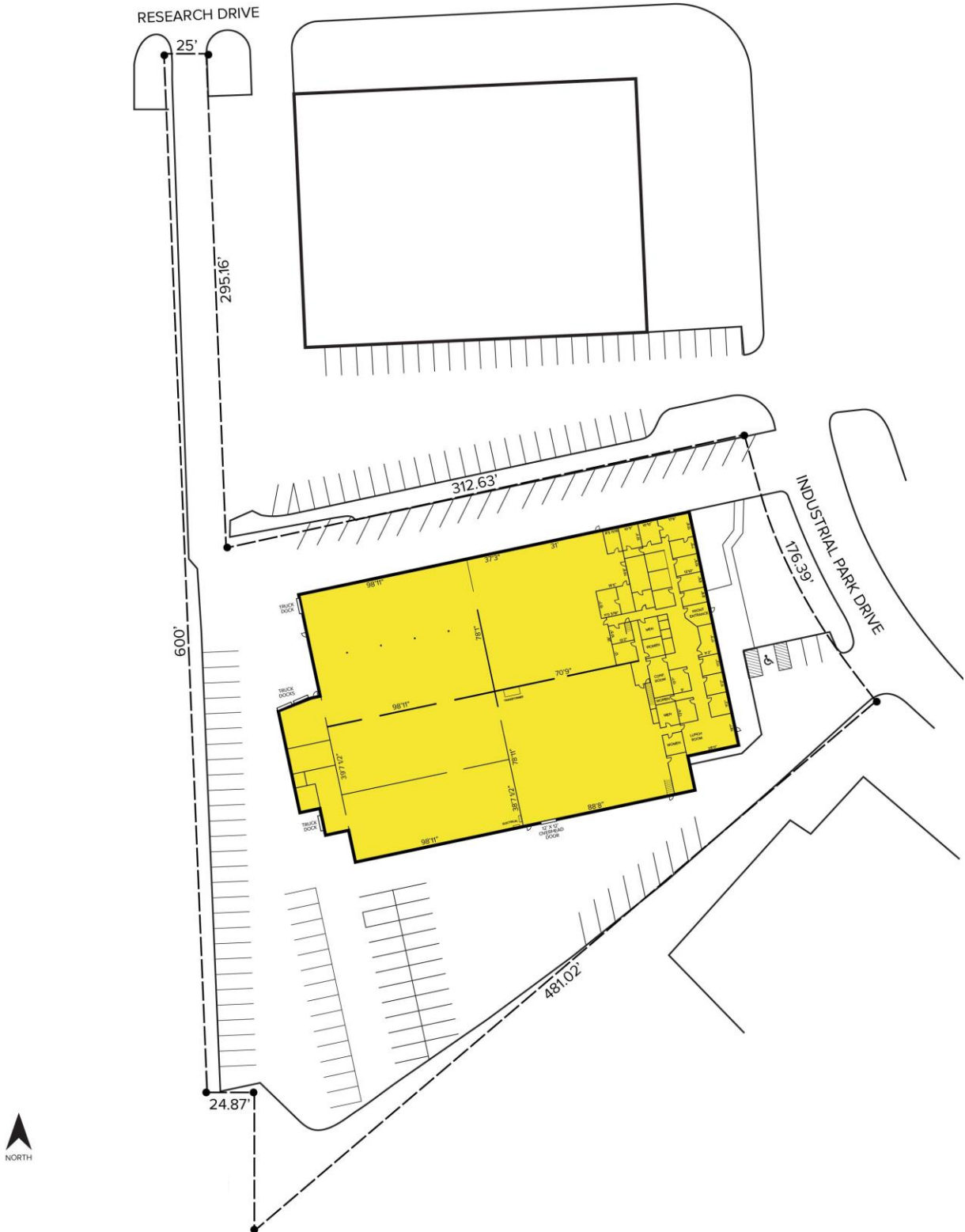
SIGNATURE ASSOCIATES
One Towne Square, Suite 1200
Southfield, MI 48076
www.signatureassociates.com

23847 Industrial Park Dr – Farmington Hills, Michigan

Industrial Available

19,000 - 39,461
Square Feet
AVAILABLE

Site Plan



For more information, please contact:

JEFF LEMANSKI

(248) 359 0641

jlemanski@signatureassociates.com

CHRISTOPHER M. D'ANGELO

(248) 948 0109

cdangelo@signatureassociates.com

SIGNATURE ASSOCIATES

One Towne Square, Suite 1200

Southfield, MI 48076

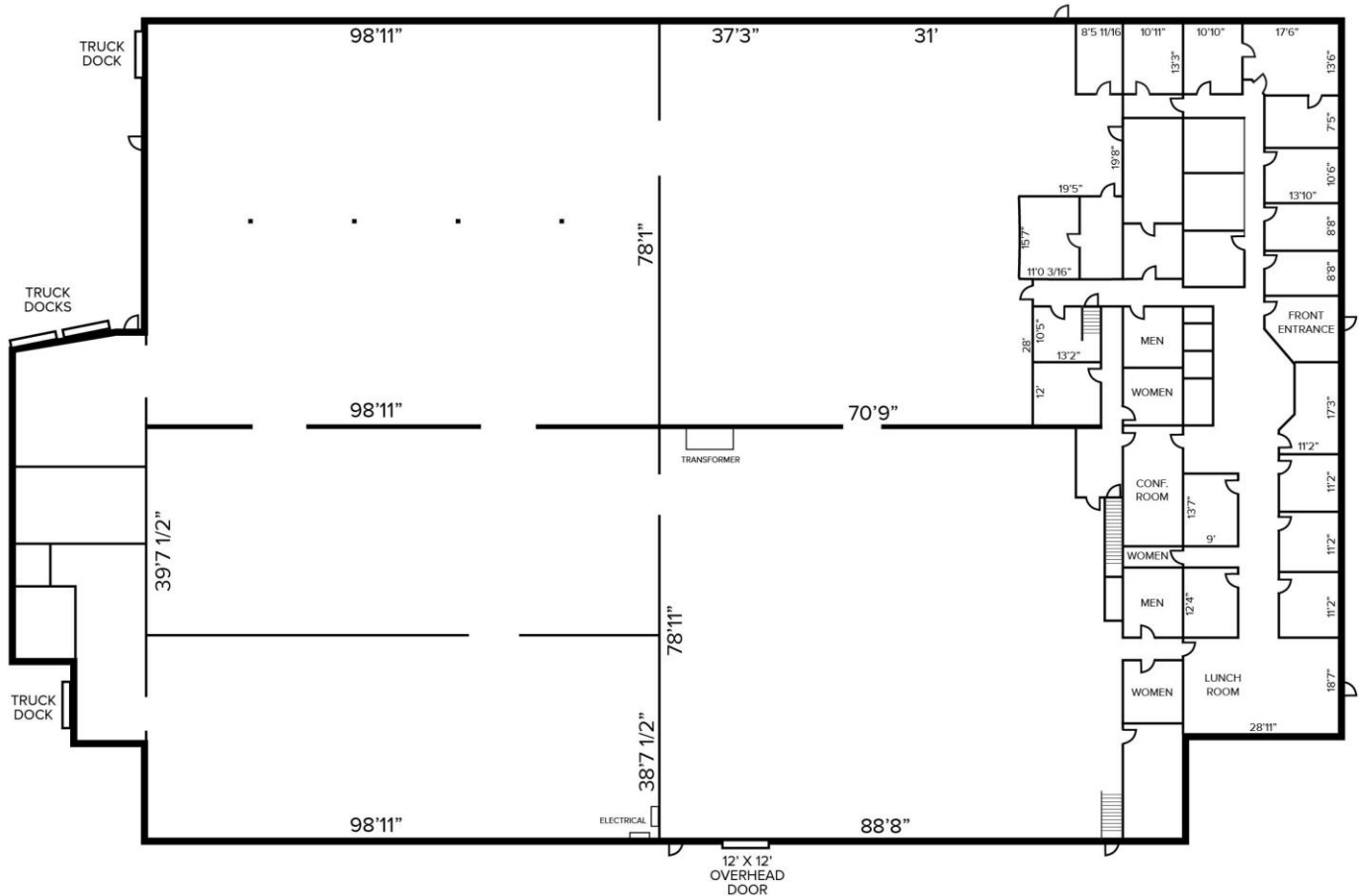
www.signatureassociates.com

23847 Industrial Park Dr – Farmington Hills, Michigan

Industrial Available

19,000 - 39,461
Square Feet
AVAILABLE

Floor Plan



For more information, please contact:

JEFF LEMANSKI

(248) 359 0641

jlemanski@signatureassociates.com

CHRISTOPHER M. D'ANGELO

(248) 948 0109

cdangelo@signatureassociates.com

SIGNATURE ASSOCIATES

One Towne Square, Suite 1200

Southfield, MI 48076

www.signatureassociates.com

23847 Industrial Park Dr – Farmington Hills, Michigan

Industrial Available

19,000 - 39,461
Square Feet
AVAILABLE

Aerial



For more information, please contact:

JEFF LEMANSKI

(248) 359 0641

jlemanski@signatureassociates.com

CHRISTOPHER M. D'ANGELO

(248) 948 0109

cdangelo@signatureassociates.com

SIGNATURE ASSOCIATES

One Towne Square, Suite 1200

Southfield, MI 48076

www.signatureassociates.com