

Olympic Office Plaza

1200 S 192nd Street, SeaTac



FOR LEASE

A Newly Renovated Office Building With Easy
Access to SR-509, Hwy-99, I-5 and SeaTac Airport

Richard Davidson
206.248.7314
richardd@kiddermathews.com

Doug Klein, SIOR
206.248.7348
dklein@kiddermathews.com

kiddermathews.com

km Kidder
Mathews

Olympic Office Plaza

1200 S 192nd Street, SeaTac

Features

AVAILABLE	Suite 203 & Suite 301A
RATE	\$16.00 / RSF, NNN
LOCATION	Easy access to SR-509, Hwy-99, I-5 and SeaTac Airport
AMENITIES	Updated lobby and entrance, Several hotels, restaurants, and retail facilities within minutes

Availabilities

SUITE 203

SUITE 301A

1,013 SF

2,341 SF



Richard Davidson
206.248.7314
richardd@kiddermathews.com

Doug Klein, SIOR
206.248.7348
dklein@kiddermathews.com

kiddermathews.com



This information supplied herein is from sources we deem reliable. It is provided without any representation, warranty or guarantee, expressed or implied as to its accuracy. Prospective Buyer or Tenant should conduct an independent investigation and verification of all matters deemed to be material, including, but not limited to, statements of income and expenses. Consult your attorney, accountant, or other professional advisor.

Olympic Office Plaza

1200 S 192nd Street, SeaTac

Floor Plans

SECOND FLOOR



Richard Davidson
206.248.7314
richardd@kiddermathews.com

Doug Klein, SIOR
206.248.7348
dklein@kiddermathews.com

kiddermathews.com

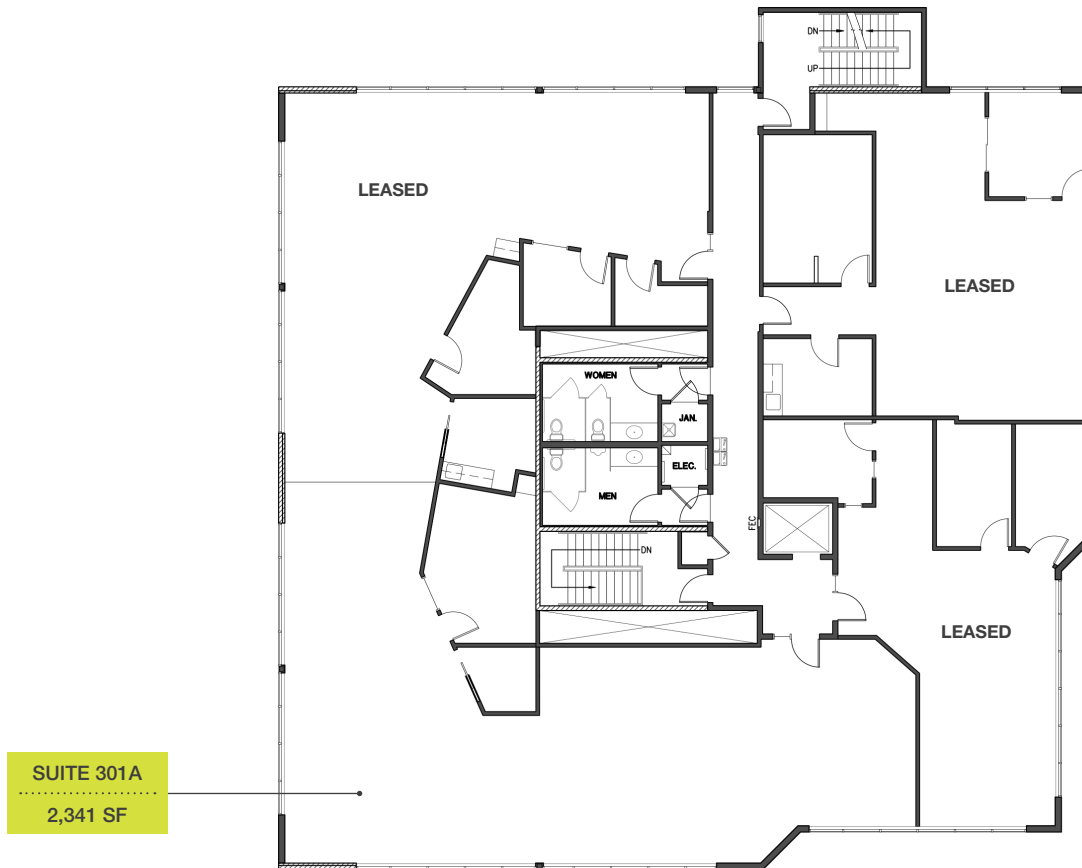


Olympic Office Plaza

1200 S 192nd Street, SeaTac

Floor Plans

THIRD FLOOR



Richard Davidson
206.248.7314
richardd@kiddermathews.com

Doug Klein, SIOR
206.248.7348
dklein@kiddermathews.com

kiddermathews.com

