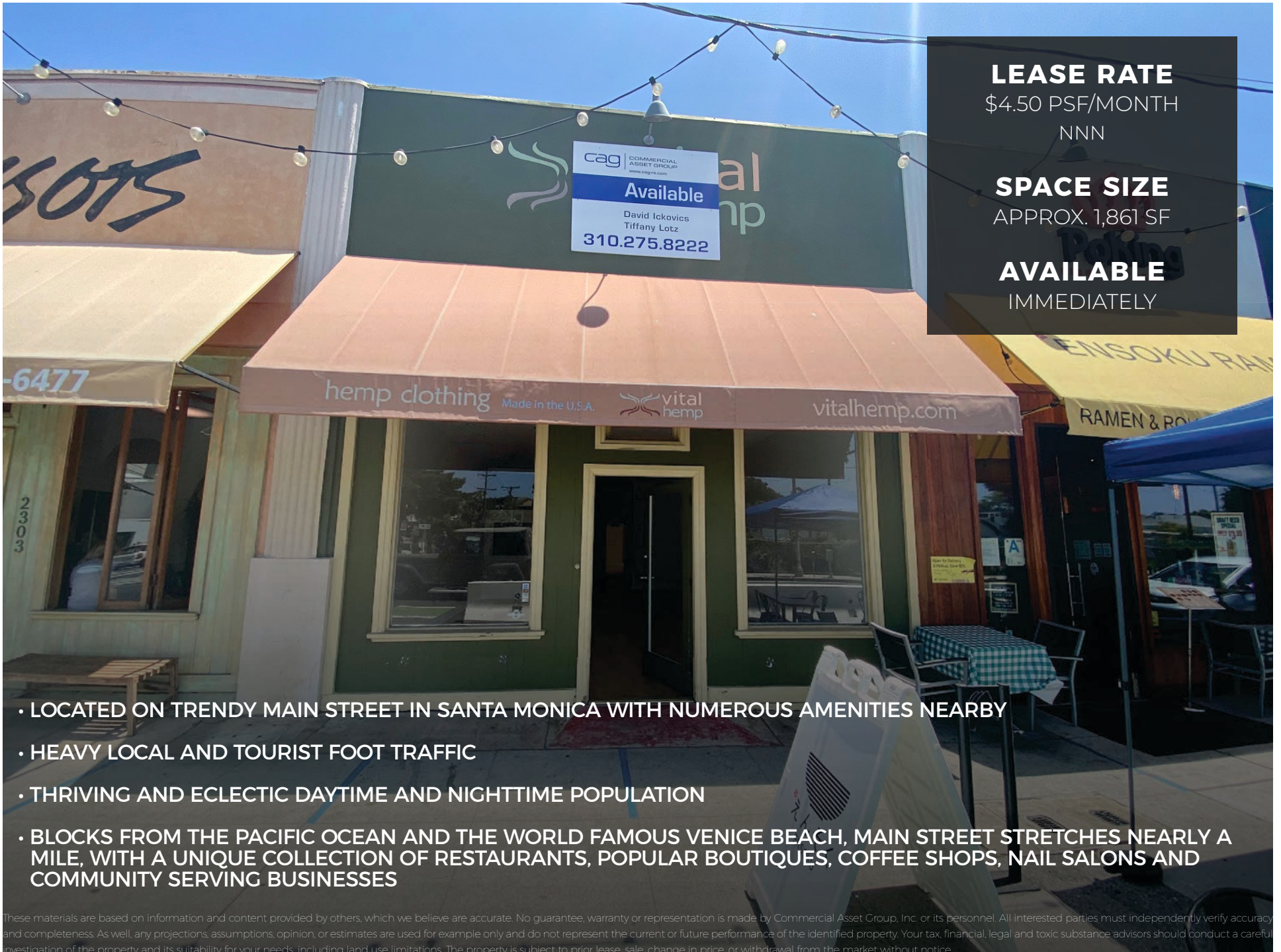


MAIN STREET RETAIL SPACE FOR LEASE



2305 MAIN STREET
SANTA MONICA, CA 90405





LEASE RATE

\$4.50 PSF/MONTH
NNN

SPACE SIZE

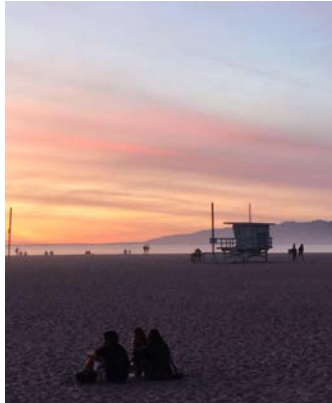
APPROX. 1,861 SF

AVAILABLE

IMMEDIATELY

- LOCATED ON TRENDY MAIN STREET IN SANTA MONICA WITH NUMEROUS AMENITIES NEARBY
- HEAVY LOCAL AND TOURIST FOOT TRAFFIC
- THRIVING AND ECLECTIC DAYTIME AND NIGHTTIME POPULATION
- BLOCKS FROM THE PACIFIC OCEAN AND THE WORLD FAMOUS VENICE BEACH, MAIN STREET STRETCHES NEARLY A MILE, WITH A UNIQUE COLLECTION OF RESTAURANTS, POPULAR BOUTIQUES, COFFEE SHOPS, NAIL SALONS AND COMMUNITY SERVING BUSINESSES

These materials are based on information and content provided by others, which we believe are accurate. No guarantee, warranty or representation is made by Commercial Asset Group, Inc. or its personnel. All interested parties must independently verify accuracy and completeness. As well, any projections, assumptions, opinion, or estimates are used for example only and do not represent the current or future performance of the identified property. Your tax, financial, legal and toxic substance advisors should conduct a careful investigation of the property and its suitability for your needs, including land use limitations. The property is subject to prior lease, sale, change in price, or withdrawal from the market without notice.



DEMOGRAPHICS

TOTAL POPULATION

1 MILE: 27,847

3 MILE: 178,928

5 MILE: 448,512

HOUSEHOLDS

1 MILE: 15,762

3 MILE: 89,956

5 MILE: 211,893

MEDIAN HOME VALUE

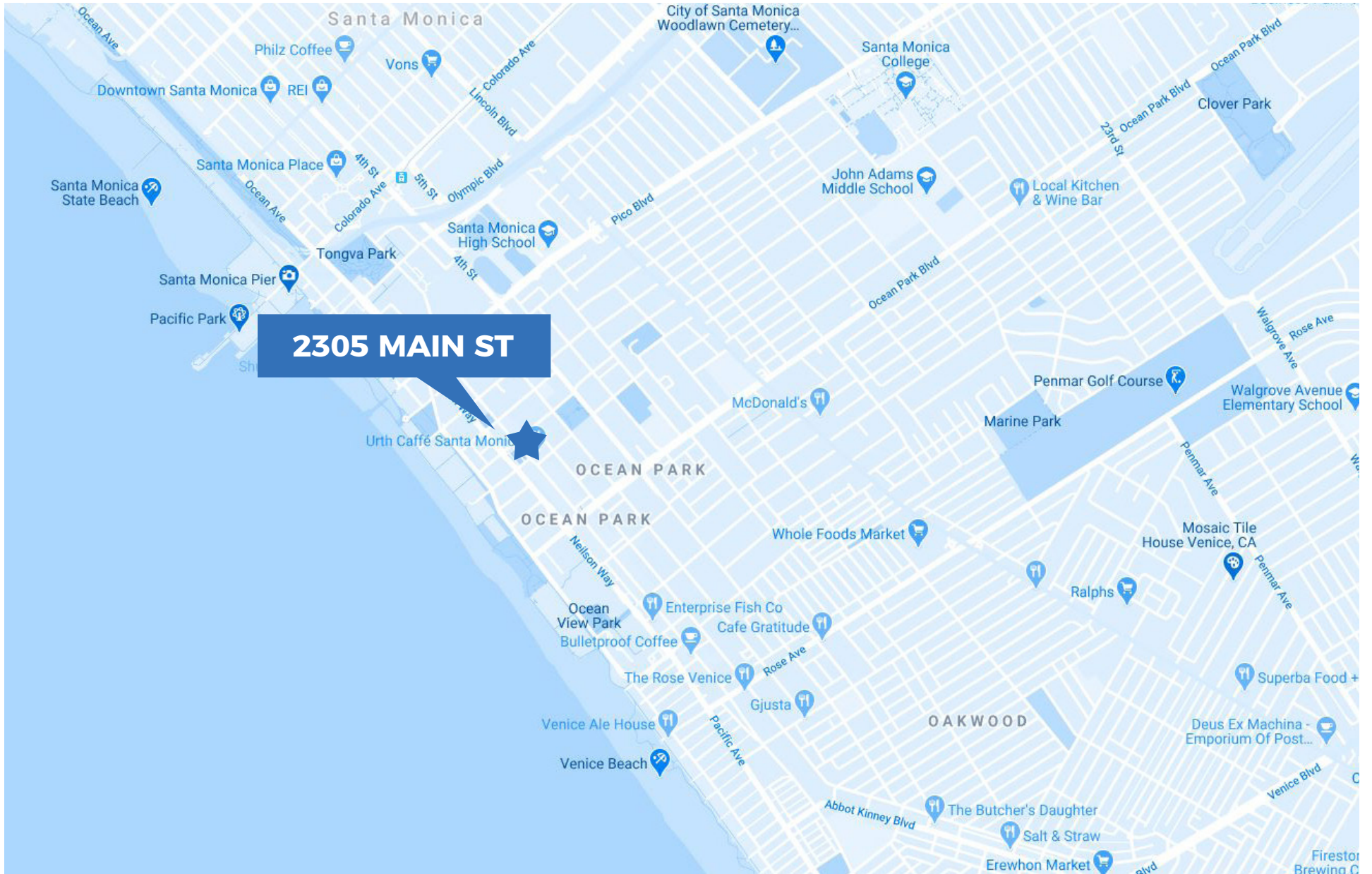
1 MILE: \$1,065,389

3 MILE: \$1,056,403

5 MILE: \$1,042,830

WALK SCORE

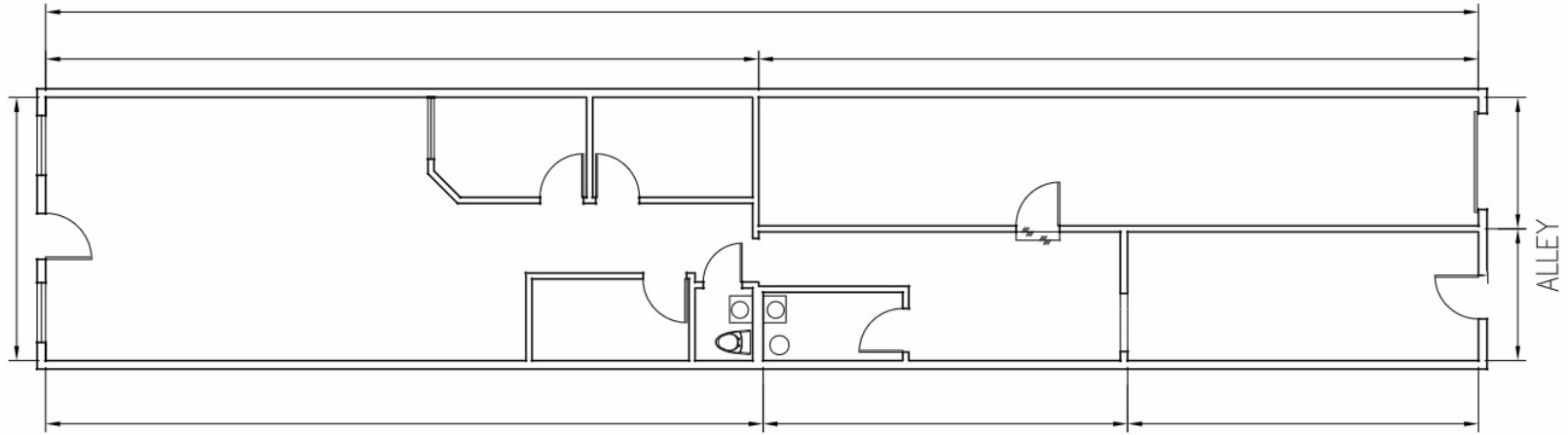
96



MAP



ADDITIONAL PHOTOS



FLOOR PLAN

DAVID ICKOVICS

PRINCIPAL
P 310.272.7380
E DJI@CAG-RE.COM
LIC. 01315424

TIFFANY LOTZ

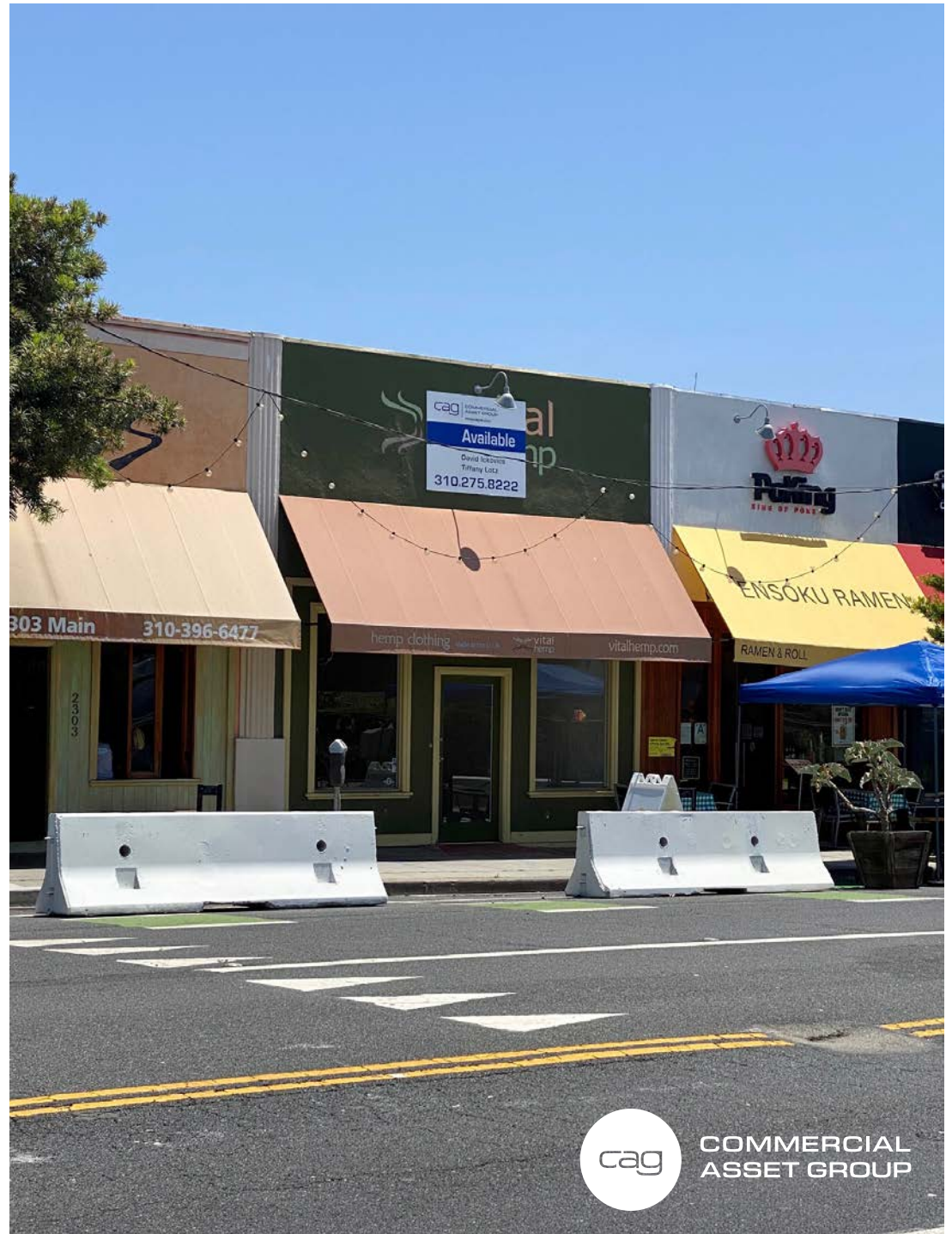
DIRECTOR
P 310.272.7385
E TIFFANY@CAG-RE.COM
LIC. 01879870

DAVID ASCHKENASY

EXECUTIVE VICE PRESIDENT
P 310.272.7381
E DAVIDA@CAG-RE.COM
LIC. 01714442

COMMERCIAL ASSET GROUP

1801 CENTURY PARK EAST, STE 1550
LOS ANGELES, CA 90067
P 310.275.8222 F 818.385.1470
WWW.CAG-RE.COM LIC. 01876070



**COMMERCIAL
ASSET GROUP**