

# availability at 655 West Broadway

SUITE	RSF	DESCRIPTION
1680	3,977 RSF	Currently in shell condition, ready for TI's. Northeast corner suite with great views of the water to the west and down Broadway to the east.
1460	1,079 RSF	Reception, kitchen and two window-lined private offices.
950	6,794 RSF	Currently in shell condition, ready for TI's. Northeast corner suite with great views of the water to the west and down Broadway to the east.
870	1,676 RSF	Spec suite. Perimeter offices with interior kitchen and storage. Ready for occupancy.
800	6,845 RSF	Reception, conference room, kitchen, copy room, five window-lined private offices.
610	5,673 RSF	Space is in shell condition and adjacent to the future building amenity center on the 6th floor.
660	4,271 RSF	Space is in shell condition and adjacent to the future building amenity center on the 6th floor.

For more information on how to live your **655 West Broadway**, contact:

#### RYAN GRANT

+1 619 696 8354  
Lic. 01813531  
ryan.grant@cbre.com

#### JEFF OESTERBLAD

+1 858 546 2637  
Lic. 01516014  
jeff.oesterblad@cbre.com

© 2015 CBRE, Inc. This information has been obtained from sources believed reliable. We have not verified it and make no guarantee, warranty or representation about it. Any projections, opinions, assumptions or estimates used are for example only and do not represent the current or future performance of the property. You and your advisors should conduct a careful, independent investigation of the property to determine to your satisfaction the suitability of the property for your needs.

**MetLife**<sup>TM</sup>  
**CBRE**

# availability at 655 West Broadway

## About Suite 660

Space is in shell condition and adjacent to the future building amenity center on the 6th floor.

■ Available   ■ Occupied



For more information on how to live your **655 West Broadway**, contact:

**RYAN GRANT**  
+1 619 696 8354  
Lic. 01813531  
ryan.grant@cbre.com

**JEFF OESTERBLAD**  
+1 858 546 2637  
Lic. 01516014  
jeff.oesterblad@cbre.com

© 2015 CBRE, Inc. This information has been obtained from sources believed reliable. We have not verified it and make no guarantee, warranty or representation about it. Any projections, opinions, assumptions or estimates used are for example only and do not represent the current or future performance of the property. You and your advisors should conduct a careful, independent investigation of the property to determine to your satisfaction the suitability of the property for your needs.

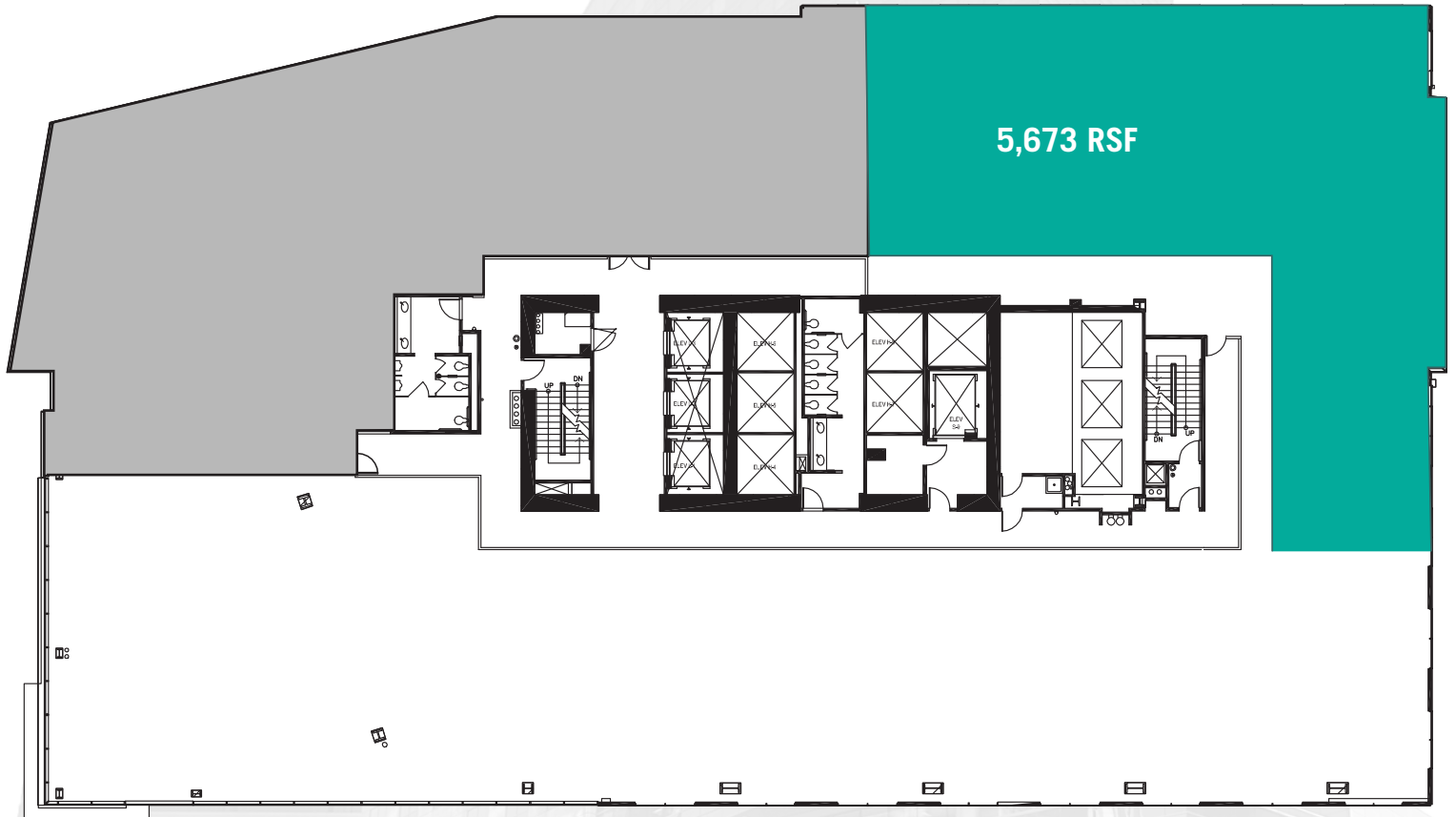
**MetLife**<sup>TM</sup>  
**CBRE**

# availability at 655 West Broadway

## About Suite 610

Space is in shell condition and adjacent to the future building amenity center on the 6th floor.

■ Available   ■ Occupied



For more information on how to live your **655 West Broadway**, contact:

### RYAN GRANT

+1 619 696 8354  
Lic. 01813531  
ryan.grant@cbre.com

### JEFF OESTERBLAD

+1 858 546 2637  
Lic. 01516014  
jeff.oesterblad@cbre.com

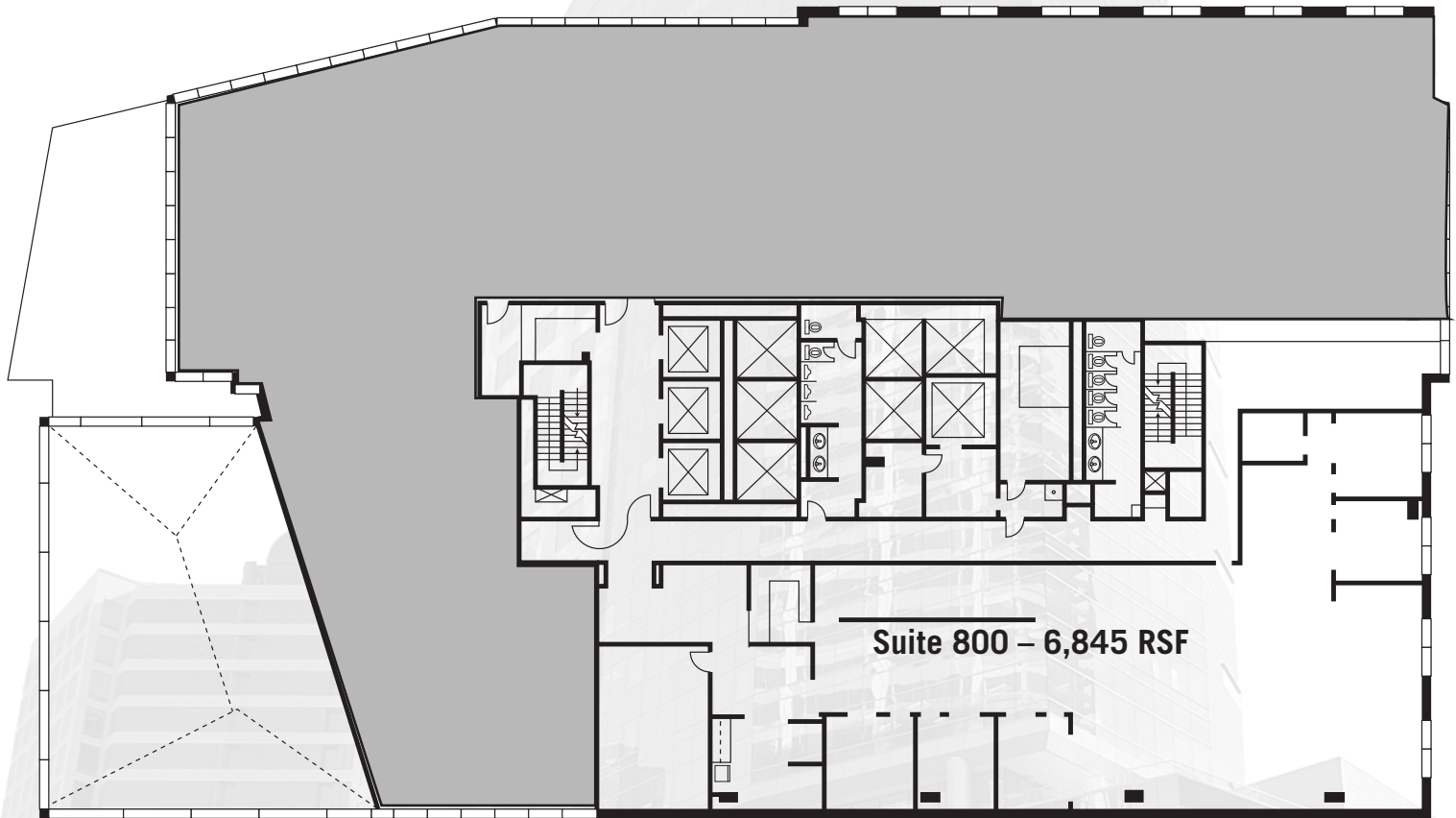
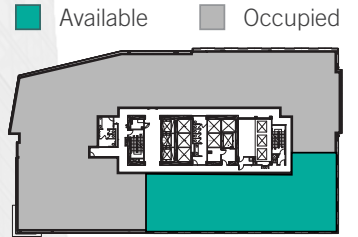
© 2015 CBRE, Inc. This information has been obtained from sources believed reliable. We have not verified it and make no guarantee, warranty or representation about it. Any projections, opinions, assumptions or estimates used are for example only and do not represent the current or future performance of the property. You and your advisors should conduct a careful, independent investigation of the property to determine to your satisfaction the suitability of the property for your needs.



# availability at 655 West Broadway

## About Suite 800

Reception, conference room, kitchen, copy room, five window-lined private offices.



For more information on how to live your **655 West Broadway**, contact:

### RYAN GRANT

+1 619 696 8354  
Lic. 01813531  
ryan.grant@cbre.com

### JEFF OESTERBLAD

+1 858 546 2637  
Lic. 01516014  
jeff.oesterblad@cbre.com

© 2015 CBRE, Inc. This information has been obtained from sources believed reliable. We have not verified it and make no guarantee, warranty or representation about it. Any projections, opinions, assumptions or estimates used are for example only and do not represent the current or future performance of the property. You and your advisors should conduct a careful, independent investigation of the property to determine to your satisfaction the suitability of the property for your needs.

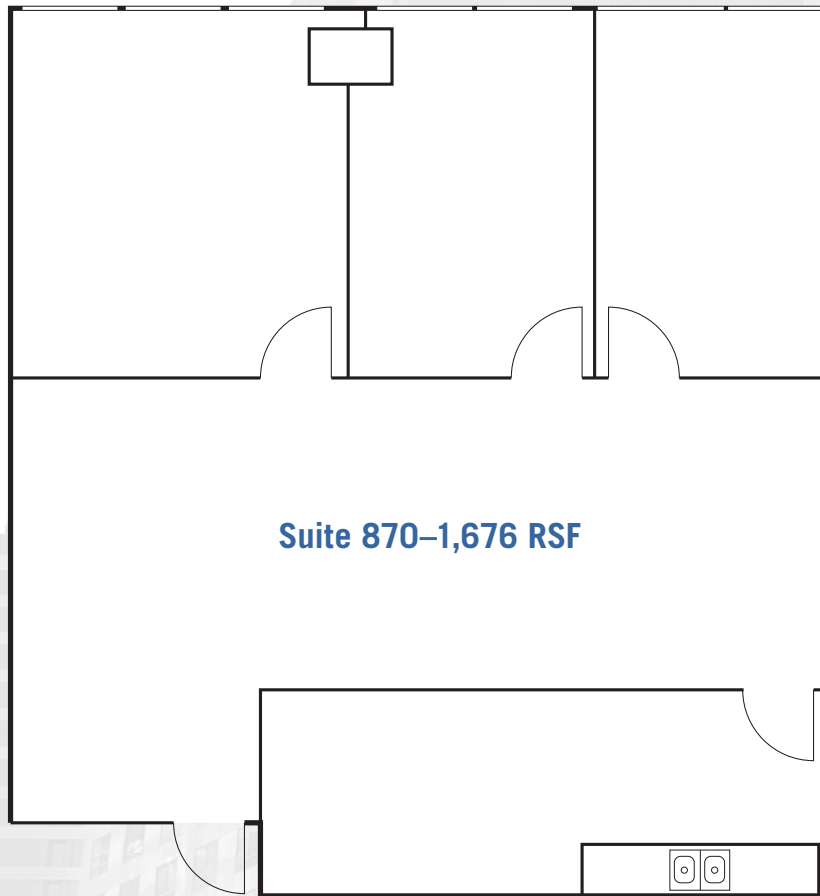
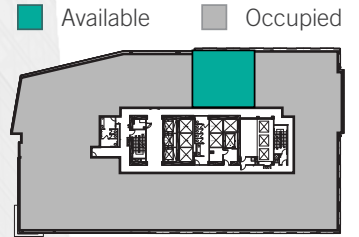
**MetLife**<sup>TM</sup>  
**CBRE**



# availability at 655 West Broadway

## About Suite 870

Spec suite. Perimeter offices with interior kitchen and storage.  
Ready for occupancy.



For more information on how to live your **655 West Broadway**, contact:

**RYAN GRANT**  
+1 619 696 8354  
Lic. 01813531  
ryan.grant@cbre.com

**JEFF OESTERBLAD**  
+1 858 546 2637  
Lic. 01516014  
jeff.oesterblad@cbre.com

© 2015 CBRE, Inc. This information has been obtained from sources believed reliable. We have not verified it and make no guarantee, warranty or representation about it. Any projections, opinions, assumptions or estimates used are for example only and do not represent the current or future performance of the property. You and your advisors should conduct a careful, independent investigation of the property to determine to your satisfaction the suitability of the property for your needs.



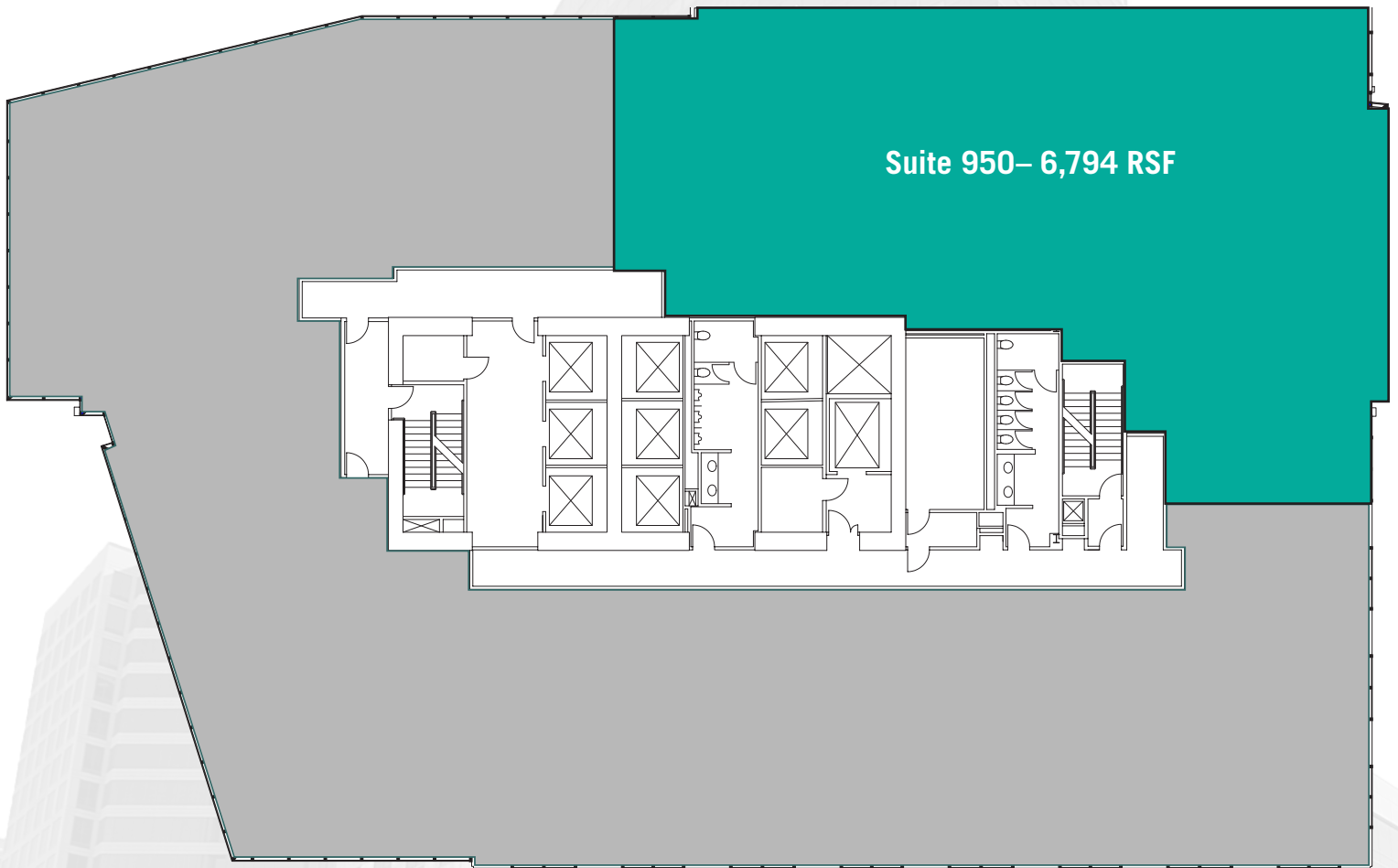
**MetLife**<sup>TM</sup>  
**CBRE**

# availability at 655 West Broadway

## About Suite 950

Currently in shell condition, ready for TI's. Northeast corner suite with great views of the water to the west and down Broadway to the east.

■ Available   ■ Occupied



For more information on how to live your **655 West Broadway**, contact:

### RYAN GRANT

+1 619 696 8354  
Lic. 01813531  
ryan.grant@cbre.com

### JEFF OESTERBLAD

+1 858 546 2637  
Lic. 01516014  
jeff.oesterblad@cbre.com

© 2015 CBRE, Inc. This information has been obtained from sources believed reliable. We have not verified it and make no guarantee, warranty or representation about it. Any projections, opinions, assumptions or estimates used are for example only and do not represent the current or future performance of the property. You and your advisors should conduct a careful, independent investigation of the property to determine to your satisfaction the suitability of the property for your needs.

**MetLife**<sup>TM</sup>  
**CBRE**

# availability at 655 West Broadway

## About Suite 1460

Reception, kitchen and two window-lined private offices.

■ Available   ■ Occupied



For more information on how to live your **655 West Broadway**, contact:

### RYAN GRANT

+1 619 696 8354  
Lic. 01813531  
ryan.grant@cbre.com

### JEFF OESTERBLAD

+1 858 546 2637  
Lic. 01516014  
jeff.oesterblad@cbre.com

© 2015 CBRE, Inc. This information has been obtained from sources believed reliable. We have not verified it and make no guarantee, warranty or representation about it. Any projections, opinions, assumptions or estimates used are for example only and do not represent the current or future performance of the property. You and your advisors should conduct a careful, independent investigation of the property to determine to your satisfaction the suitability of the property for your needs.

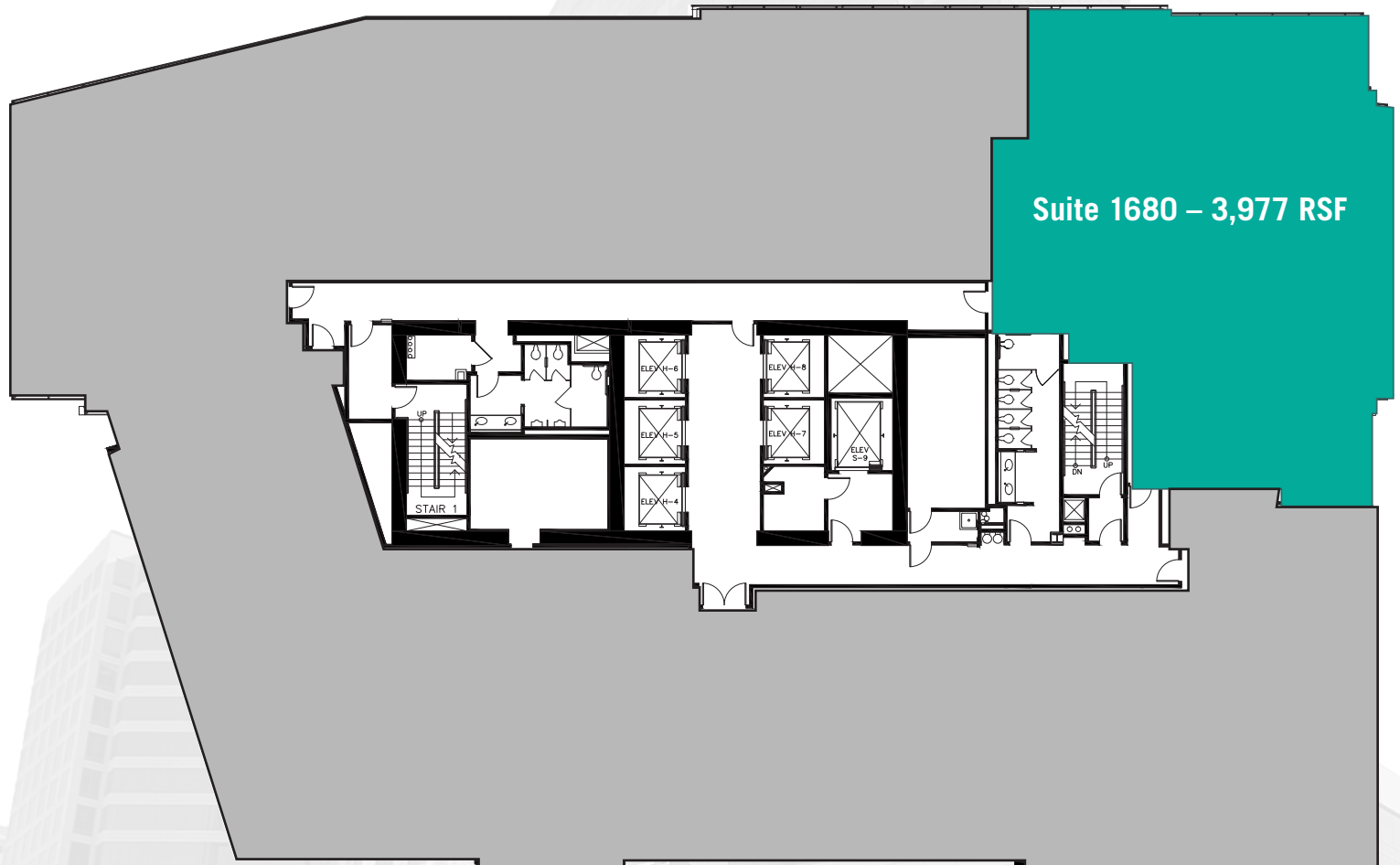
**MetLife**<sup>TM</sup>  
**CBRE**

# availability at 655 West Broadway

## About Suite 1680

Currently in shell condition, ready for TI's. Northeast corner suite with great views of the water to the west and down Broadway to the east.

■ Available   ■ Occupied



For more information on how to live your **655 West Broadway**, contact:

### RYAN GRANT

+1 619 696 8354  
Lic. 01813531  
ryan.grant@cbre.com

### JEFF OESTERBLAD

+1 858 546 2637  
Lic. 01516014  
jeff.oesterblad@cbre.com

© 2015 CBRE, Inc. This information has been obtained from sources believed reliable. We have not verified it and make no guarantee, warranty or representation about it. Any projections, opinions, assumptions or estimates used are for example only and do not represent the current or future performance of the property. You and your advisors should conduct a careful, independent investigation of the property to determine to your satisfaction the suitability of the property for your needs.

**MetLife**<sup>TM</sup>  
**CBRE**