

FOR LEASE > MEDICAL / DENTAL SPACE

La Casa Via Medical Center

120-122 LA CASA VIA, WALNUT CREEK, CA



AVAILABLE SUITES

- > Suite 101 ±1,516 RSF
- > Suite 107 ±1,846 RSF
- > Suite 205 ±1,349 RSF
- > Suite 208 ±3,047 RSF
- > Suite 222 (Tour) ±2,426 RSF



HIGHLIGHTS

- > Directly across the street from John Muir Medical Center
- > Turn key improvement allowances available
- > Building renovations underway
- > Parking: 4.7/1,000 SF
- > New signage program
- > New common area restrooms
- > Full path of travel just completed

FOR MORE INFORMATION:

BRIAN CLACK
+1 925 279 4654
brian.clack@colliers.com
CA Lic. 01416362

ERIC ERICKSON CCIM SIOR
+1 925 279 5580
eric.erickson@colliers.com
CA Lic. 01177336

FOR LEASE > MEDICAL / DENTAL SPACE

La Casa Via Medical Center

120-122 LA CASA VIA, WALNUT CREEK, CA

BRIAN CLACK
+1 925 279 4654
brian.clack@colliers.com
CA Lic. 01416362

ERIC ERICKSON CCIM SIOR
+1 925 279 5580
eric.erickson@colliers.com
CA Lic. 01177336



FOR LEASE > MEDICAL / DENTAL SPACE

La Casa Via Medical Center

120-122 LA CASA VIA, WALNUT CREEK, CA

BRIAN CLACK
+1 925 279 4654
brian.clack@colliers.com
CA Lic. 01416362

ERIC ERICKSON CCIM SIOR
+1 925 279 5580
eric.erickson@colliers.com
CA Lic. 01177336



FOR LEASE > MEDICAL / DENTAL SPACE

La Casa Via Medical Center

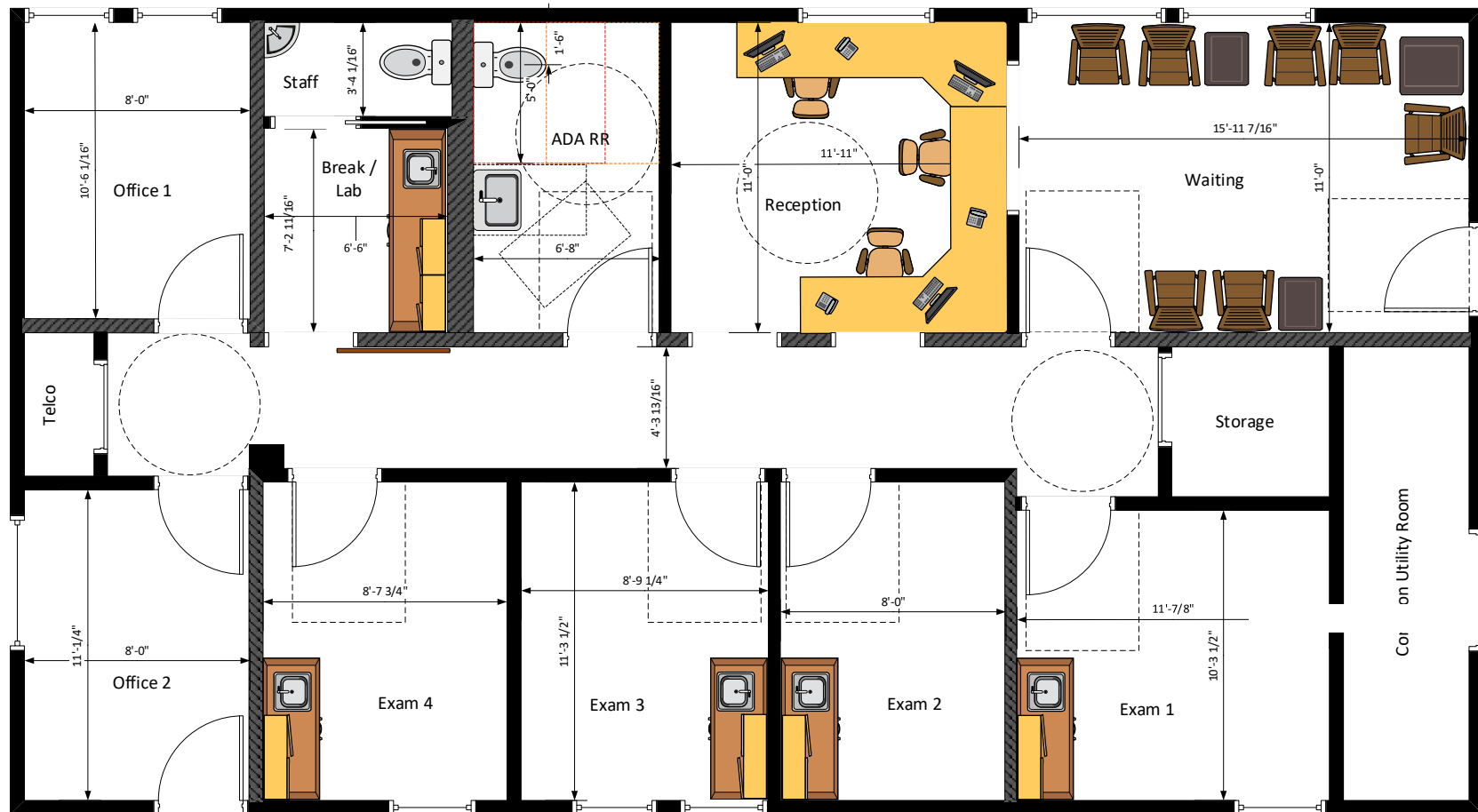
120 LA CASA VIA, WALNUT CREEK, CA

SUITE 101

±1,516 SF

BRIAN CLACK
+1 925 279 4654
brian.clack@colliers.com
CA Lic. 01416362

ERIC ERICKSON CCIM SIOR
+1 925 279 5580
eric.erickson@colliers.com
CA Lic. 01177336



FOR LEASE > MEDICAL / DENTAL SPACE

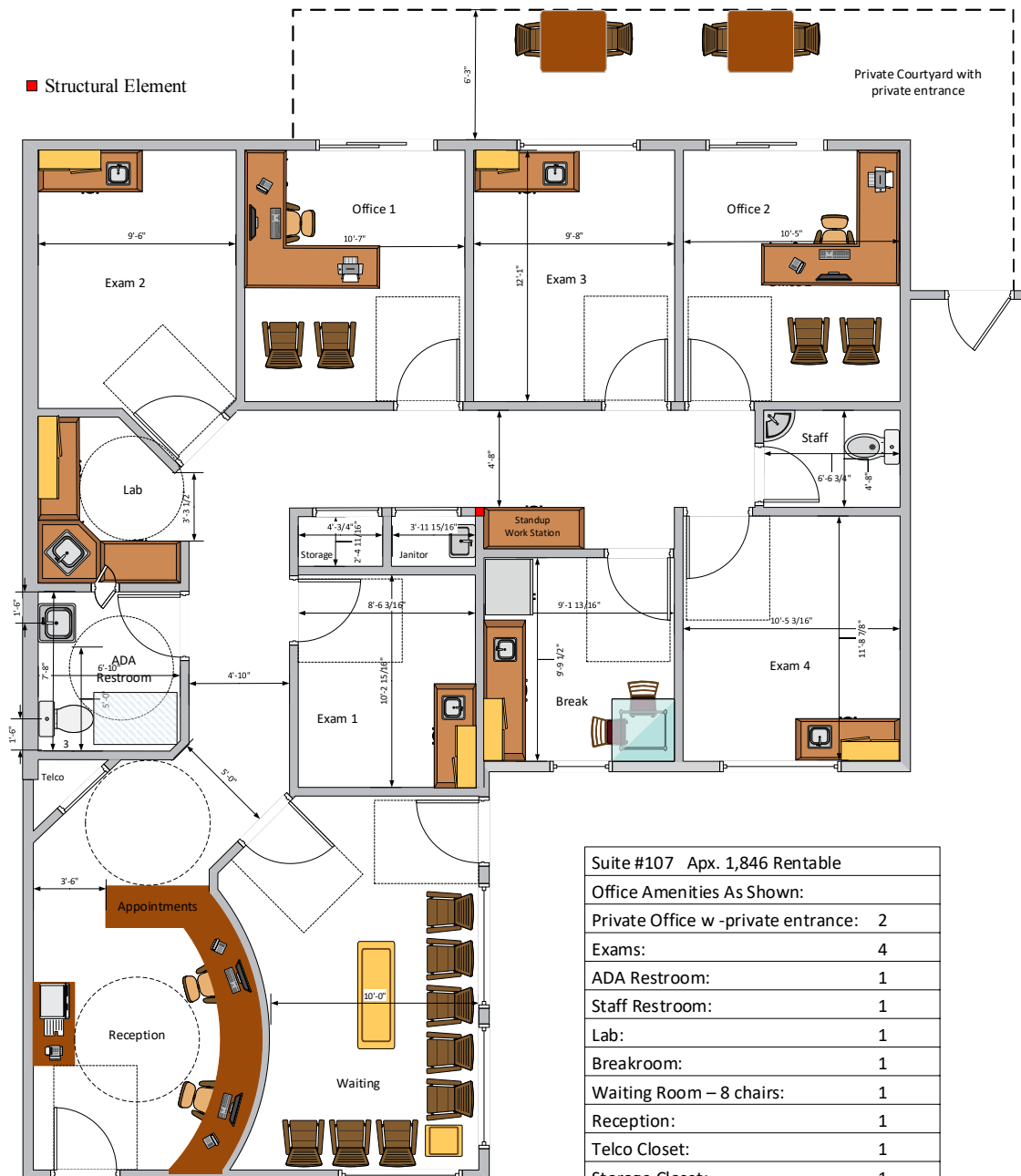
La Casa Via Medical Center



120 LA CASA VIA, WALNUT CREEK, CA

SUITE 107 - MEDICAL OFFICE V1

±1,846 SF



Any Room Can Be Either an Office or Exam
All Measurements Approximate

Suite #107 Apx. 1,846 Rentable	
Office Amenities As Shown:	
Private Office w -private entrance:	2
Exams:	4
ADA Restroom:	1
Staff Restroom:	1
Lab:	1
Breakroom:	1
Waiting Room – 8 chairs:	1
Reception:	1
Telco Closet:	1
Storage Closet:	1
Janitor Closet:	1
Standup Work Station:	1
Private Patio:	1

BRIAN CLACK
+1 925 279 4654
brian.clack@colliers.com
CA Lic. 01416362

ERIC ERICKSON CCIM SIOR
+1 925 279 5580
eric.erickson@colliers.com
CA Lic. 01177336

FOR LEASE > MEDICAL / DENTAL SPACE

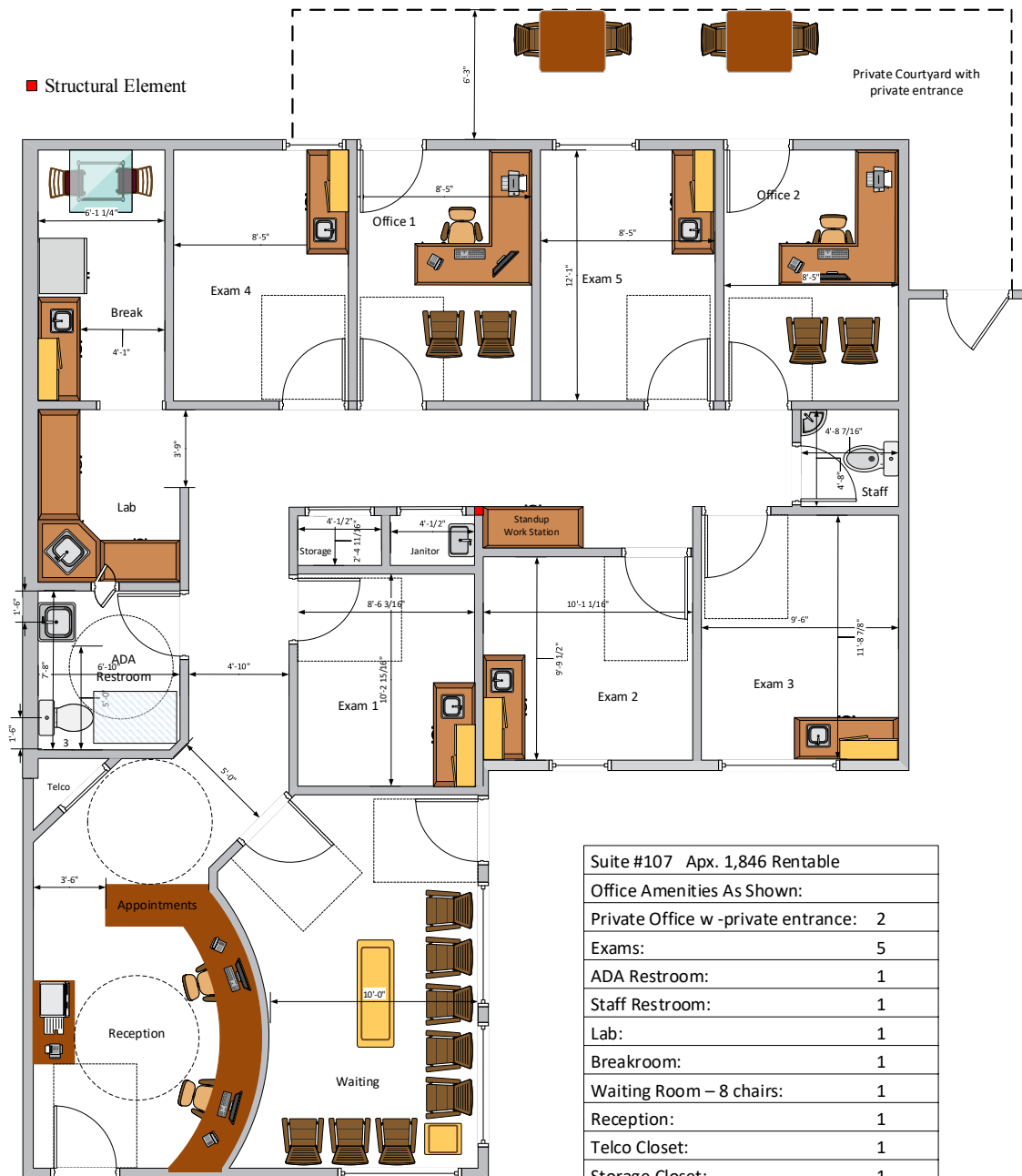
La Casa Via Medical Center



120 LA CASA VIA, WALNUT CREEK, CA

SUITE 107 - MEDICAL OFFICE V2

±1,846 SF



Any Room Can Be Either an Office or Exam
All Measurements Approximate

Suite #107 Apx. 1,846 Rentable	
Office Amenities As Shown:	
Private Office w -private entrance:	2
Exams:	5
ADA Restroom:	1
Staff Restroom:	1
Lab:	1
Breakroom:	1
Waiting Room – 8 chairs:	1
Reception:	1
Telco Closet:	1
Storage Closet:	1
Janitor Closet:	1
Standup Work Station:	1
Private Patio:	1

BRIAN CLACK
+1 925 279 4654
brian.clack@colliers.com
CA Lic. 01416362

ERIC ERICKSON CCIM SIOR
+1 925 279 5580
eric.erickson@colliers.com
CA Lic. 01177336

FOR LEASE > MEDICAL / DENTAL SPACE

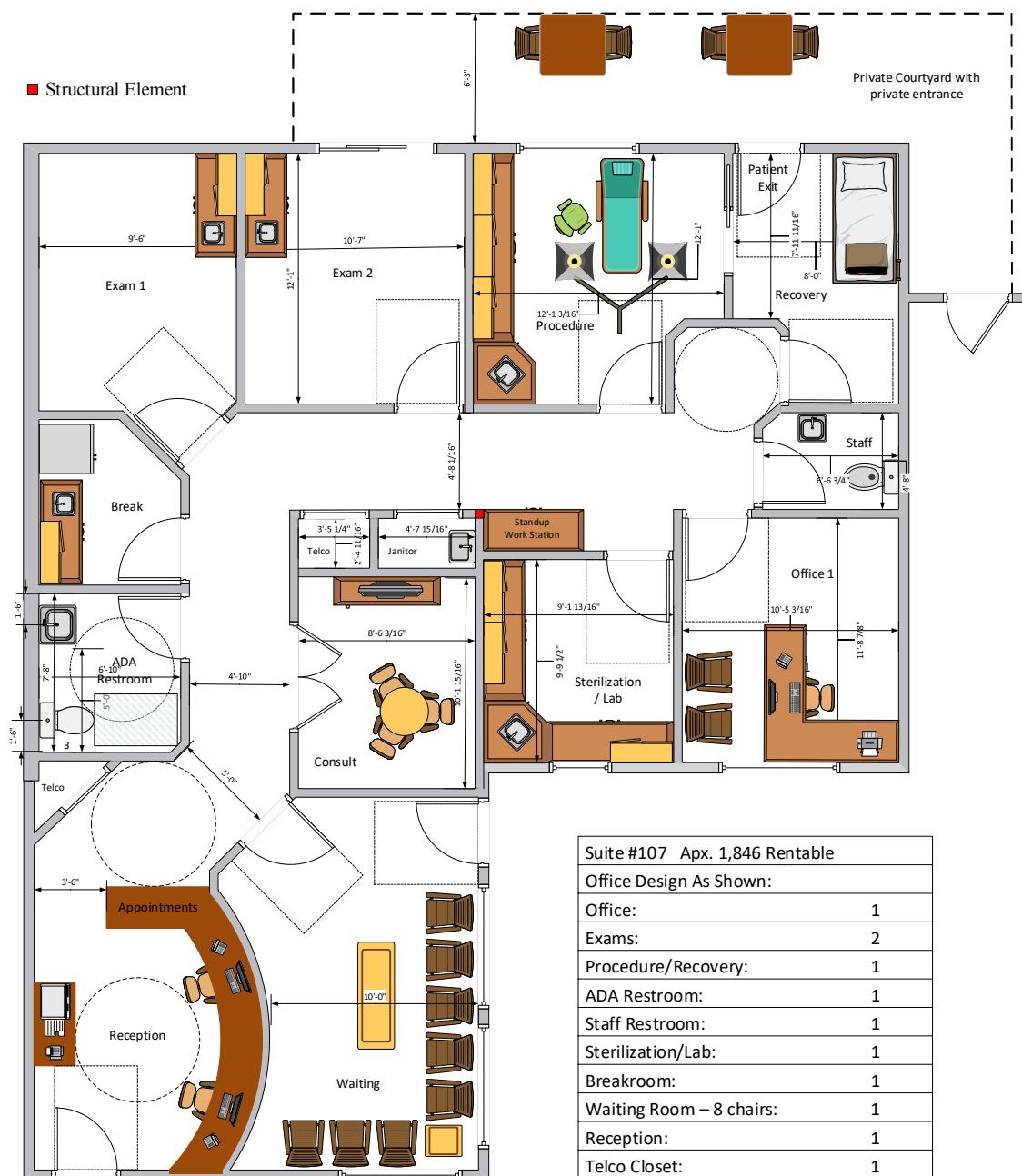
La Casa Via Medical Center

120 LA CASA VIA, WALNUT CREEK, CA



SUITE 107 - PLASTIC SURGEON

±1,846 SF



Suite #107 Apx. 1,846 Rentable	
Office Design As Shown:	
Office:	1
Exams:	2
Procedure/Recovery:	1
ADA Restroom:	1
Staff Restroom:	1
Sterilization/Lab:	1
Breakroom:	1
Waiting Room – 8 chairs:	1
Reception:	1
Telco Closet:	1
Janitor Closet:	1
Standup Work Station:	1
Private Patio:	1

BRIAN CLACK
+1 925 279 4654
brian.clack@colliers.com
CA Lic. 01416362

ERIC ERICKSON CCIM SIOR
+1 925 279 5580
eric.erickson@colliers.com
CA Lic. 01177336

FOR LEASE > MEDICAL / DENTAL SPACE

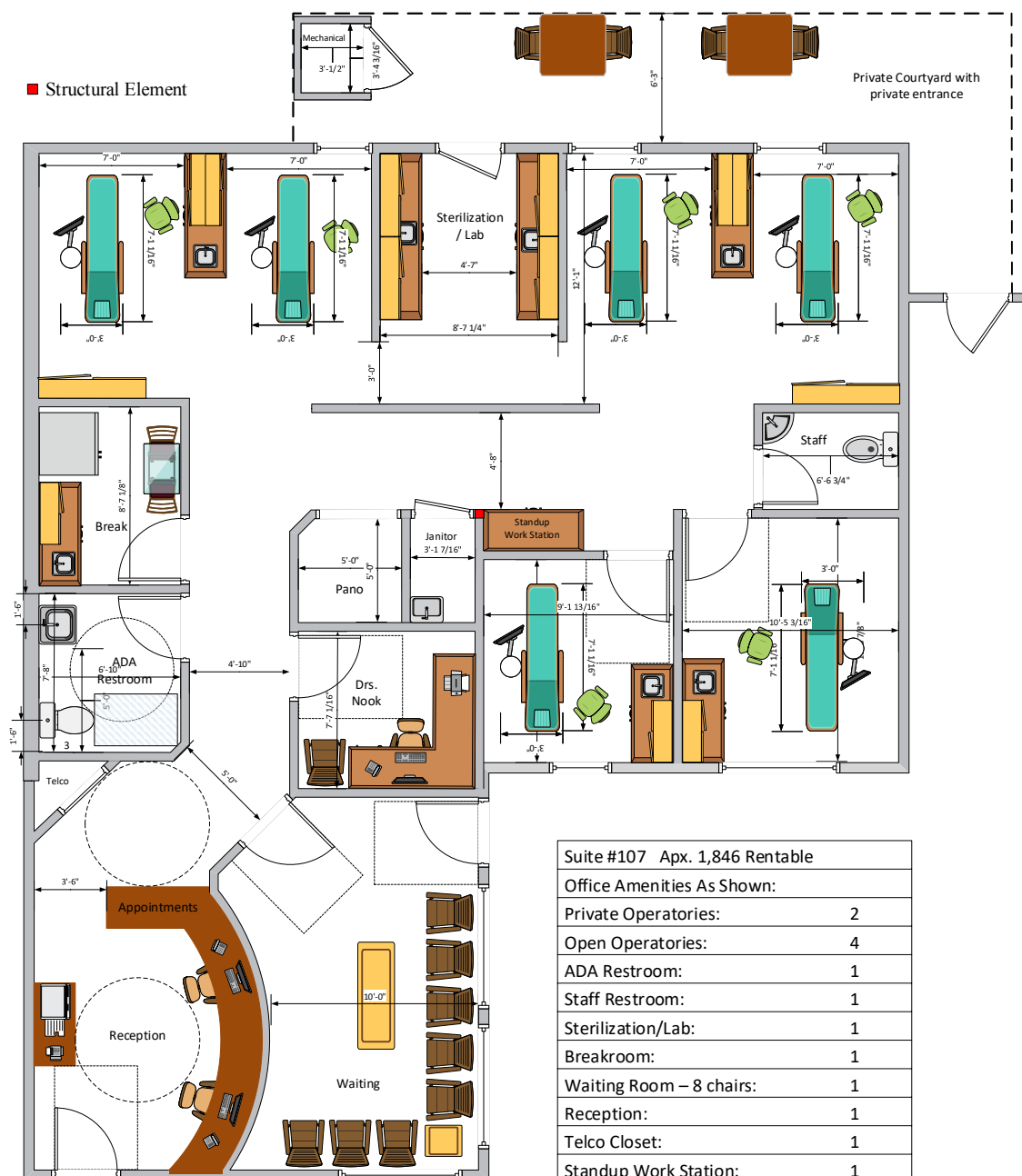
La Casa Via Medical Center

120 LA CASA VIA, WALNUT CREEK, CA



SUITE 107 - DENTAL ORTHODONTIST

±1,846 SF



Suite #107 Apx. 1,846 Rentable	
Office Amenities As Shown:	
Private Operatories:	2
Open Operatories:	4
ADA Restroom:	1
Staff Restroom:	1
Sterilization/Lab:	1
Breakroom:	1
Waiting Room – 8 chairs:	1
Reception:	1
Telco Closet:	1
Standup Work Station:	1
Private Patio:	1
Mechanical Room:	1
Janitor Closet:	1

BRIAN CLACK
+1 925 279 4654
brian.clack@colliers.com
CA Lic. 01416362

ERIC ERICKSON CCIM SIOR
+1 925 279 5580
eric.erickson@colliers.com
CA Lic. 01177336

FOR LEASE > MEDICAL / DENTAL SPACE

La Casa Via Medical Center

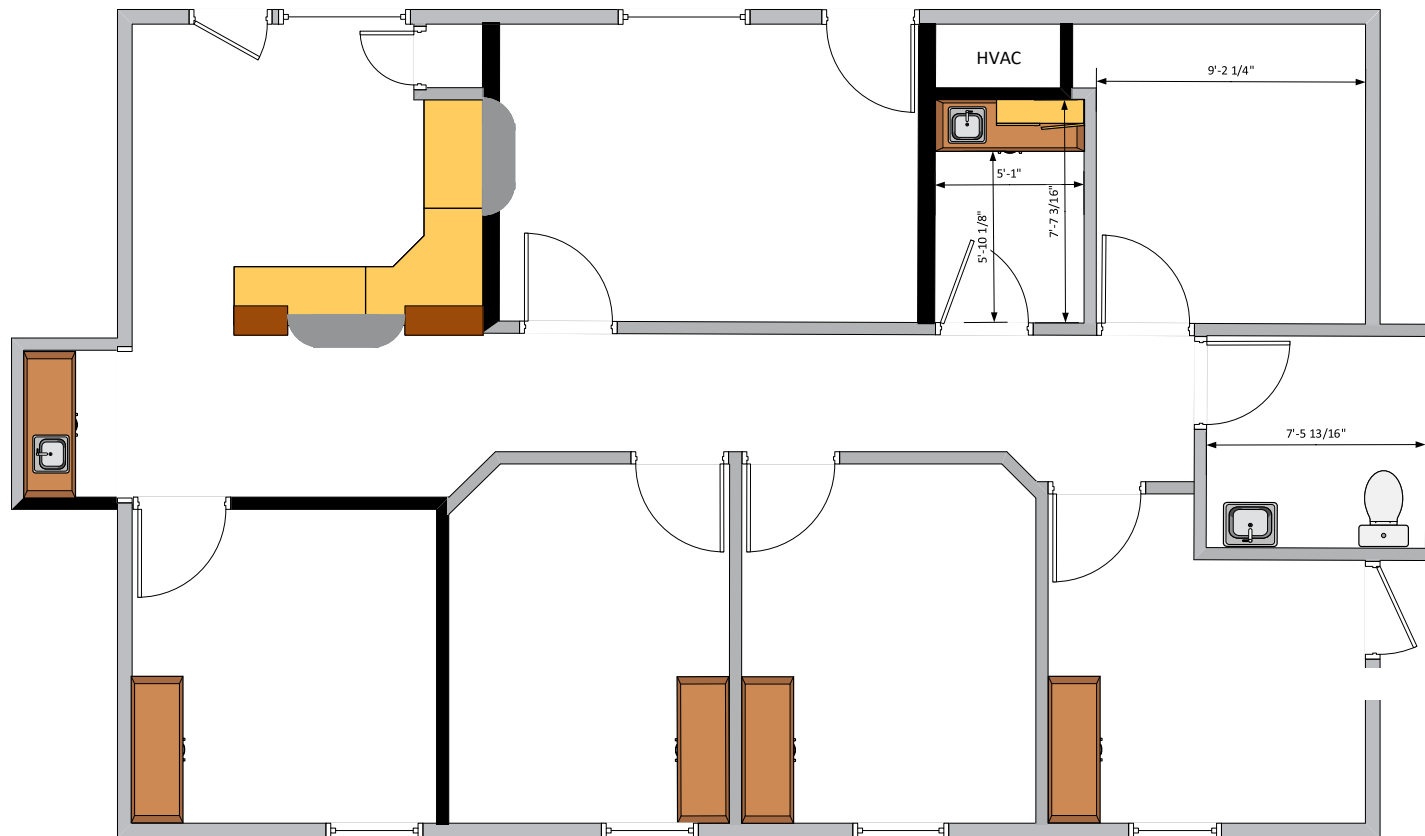
120 LA CASA VIA, WALNUT CREEK, CA

SUITE 205 CHIROPRACTIC OFFICE CONFIGURATION V1

±1,349 SF

BRIAN CLACK
+1 925 279 4654
brian.clack@colliers.com
CA Lic. 01416362

ERIC ERICKSON CCIM SIOR
+1 925 279 5580
eric.erickson@colliers.com
CA Lic. 01177336



120 La Casa Via, Suite 205
Chiropractic Office – 3-5-2020

General Conditions:

1. All countertops max 34" to finished floor
2. No closers on any interior door. Closers on exterior doors leading into 5' hallway

FOR LEASE > MEDICAL / DENTAL SPACE

La Casa Via Medical Center

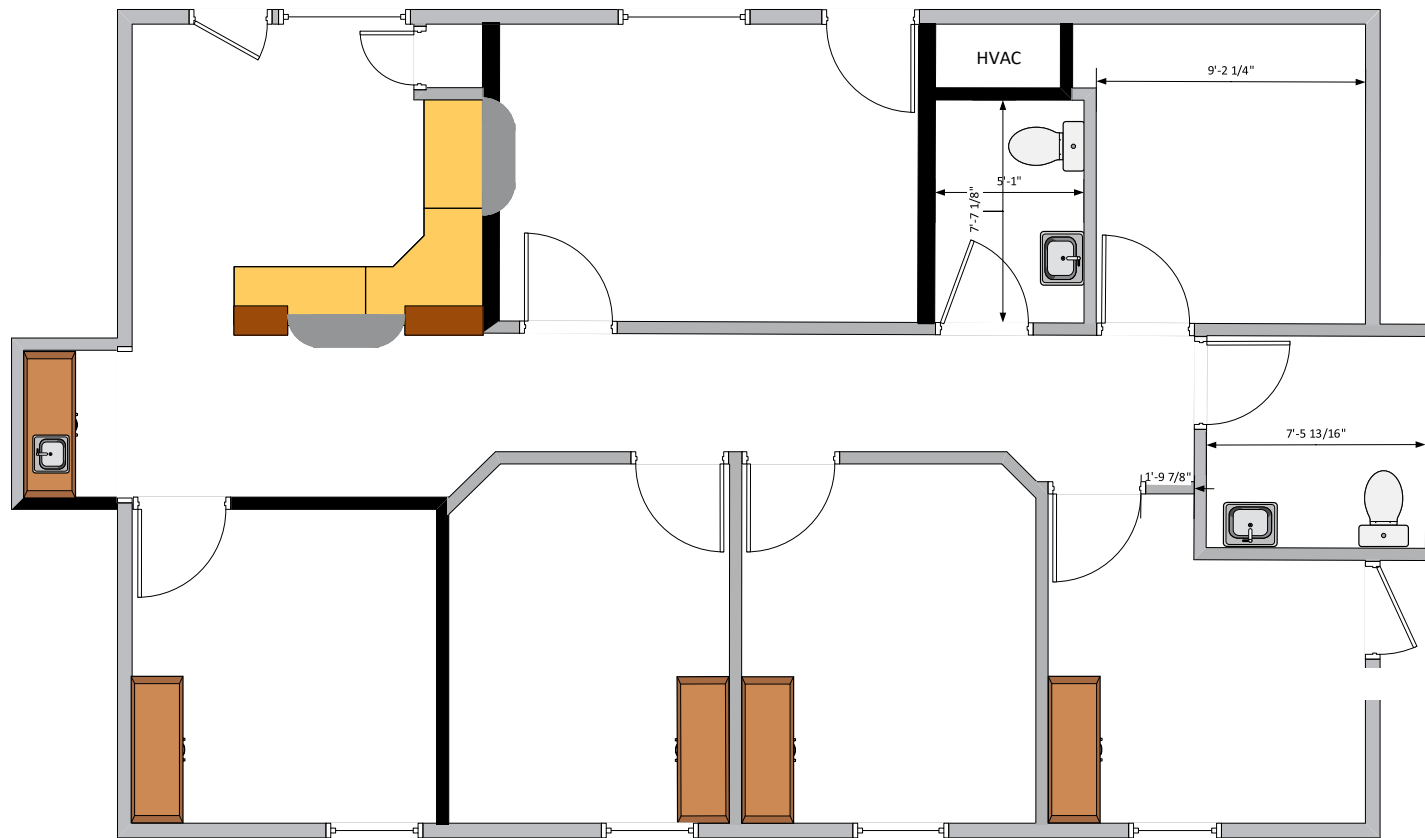
120 LA CASA VIA, WALNUT CREEK, CA

SUITE 205 CHIROPRACTIC OFFICE CONFIGURATION V2

±1,349 SF

BRIAN CLACK
+1 925 279 4654
brian.clack@colliers.com
CA Lic. 01416362

ERIC ERICKSON CCIM SIOR
+1 925 279 5580
eric.erickson@colliers.com
CA Lic. 01177336



120 La Casa Via, Suite 205
Chiropractic Office – 3-5-2020

General Conditions:

1. All countertops max 34" to finished floor
2. No closers on any interior door. Closers on exterior doors leading into 5' hallway

FOR LEASE > MEDICAL / DENTAL SPACE

La Casa Via Medical Center

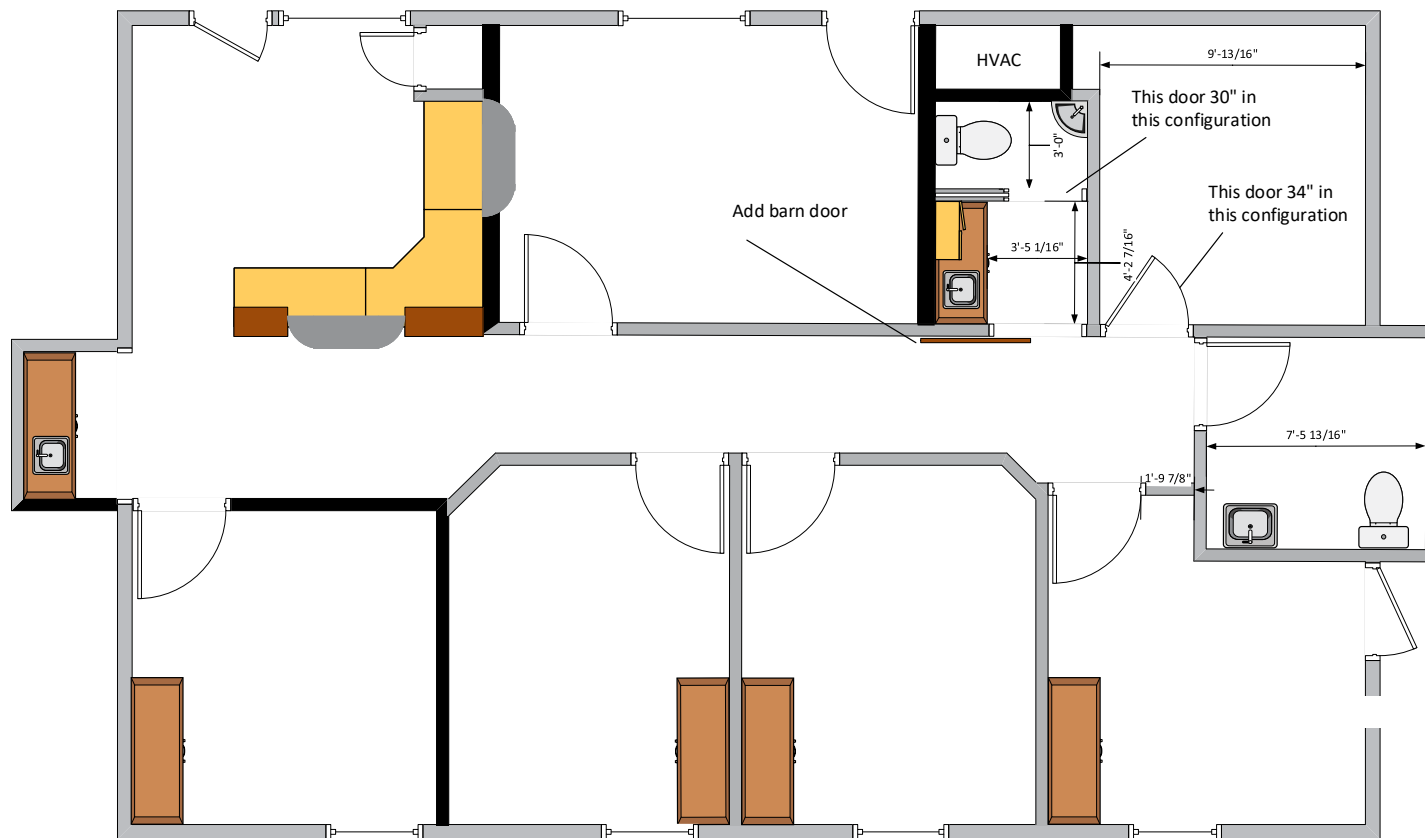
120 LA CASA VIA, WALNUT CREEK, CA

SUITE 205 CHIROPRACTIC OFFICE CONFIGURATION V3

±1,349 SF

BRIAN CLACK
+1 925 279 4654
brian.clack@colliers.com
CA Lic. 01416362

ERIC ERICKSON CCIM SIOR
+1 925 279 5580
eric.erickson@colliers.com
CA Lic. 01177336



120 La Casa Via, Suite 205
Chiropractic Office – 3-5-2020

General Conditions:

1. All countertops max 34" to finished floor
2. No closers on any interior door. Closers on exterior doors leading into 5' hallway

FOR LEASE > MEDICAL / DENTAL SPACE

La Casa Via Medical Center

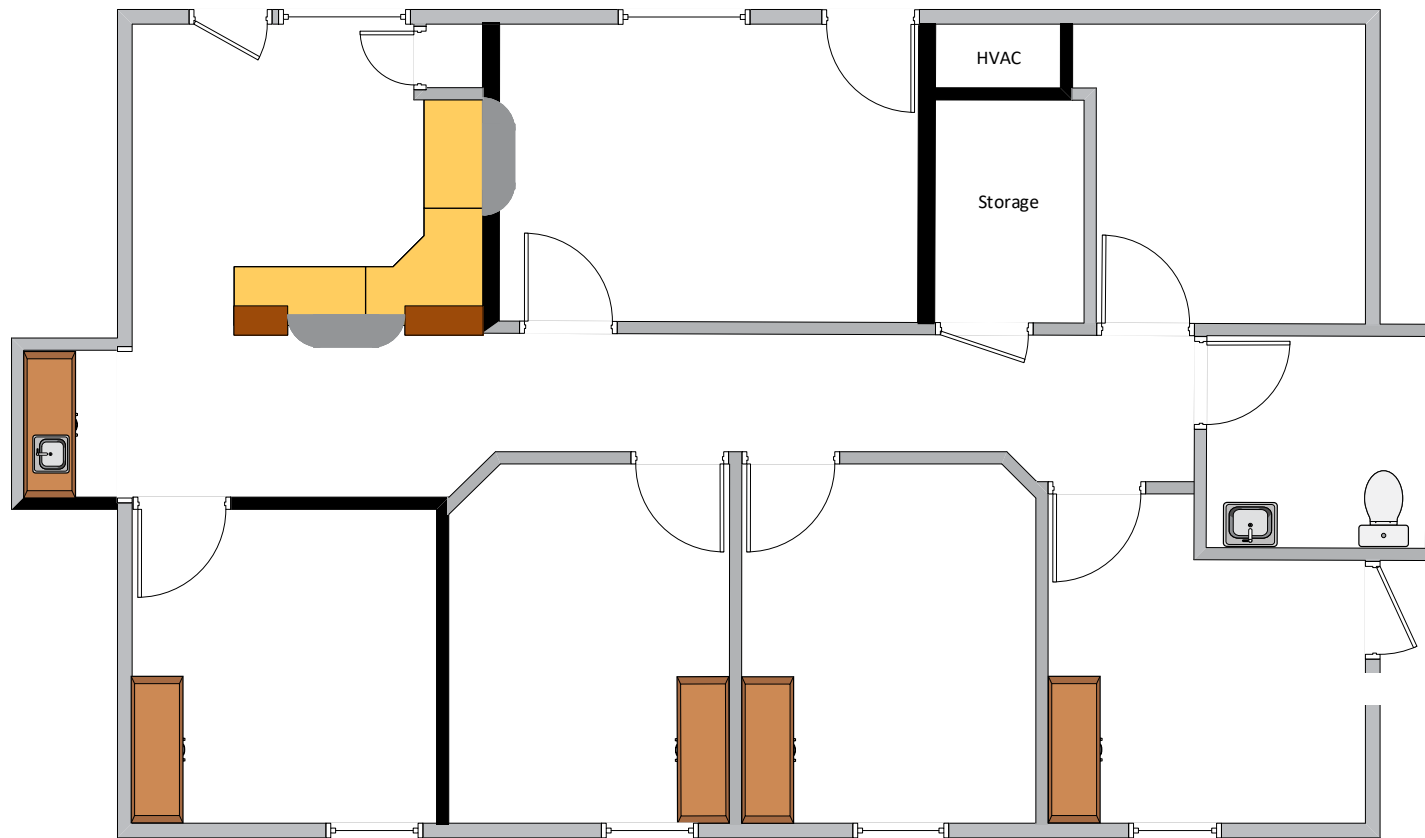
120 LA CASA VIA, WALNUT CREEK, CA

SUITE 205 CHIROPRACTIC OFFICE CONFIGURATION V4

±1,349 SF

BRIAN CLACK
+1 925 279 4654
brian.clack@colliers.com
CA Lic. 01416362

ERIC ERICKSON CCIM SIOR
+1 925 279 5580
eric.erickson@colliers.com
CA Lic. 01177336



120 La Casa Via, Suite 205
Chiropractic Office – 3-5-2020

General Conditions:

1. All countertops max 34" to finished floor
2. No closers on any interior door. Closers on exterior doors leading into 5' hallway

FOR LEASE > MEDICAL / DENTAL SPACE

La Casa Via Medical Center

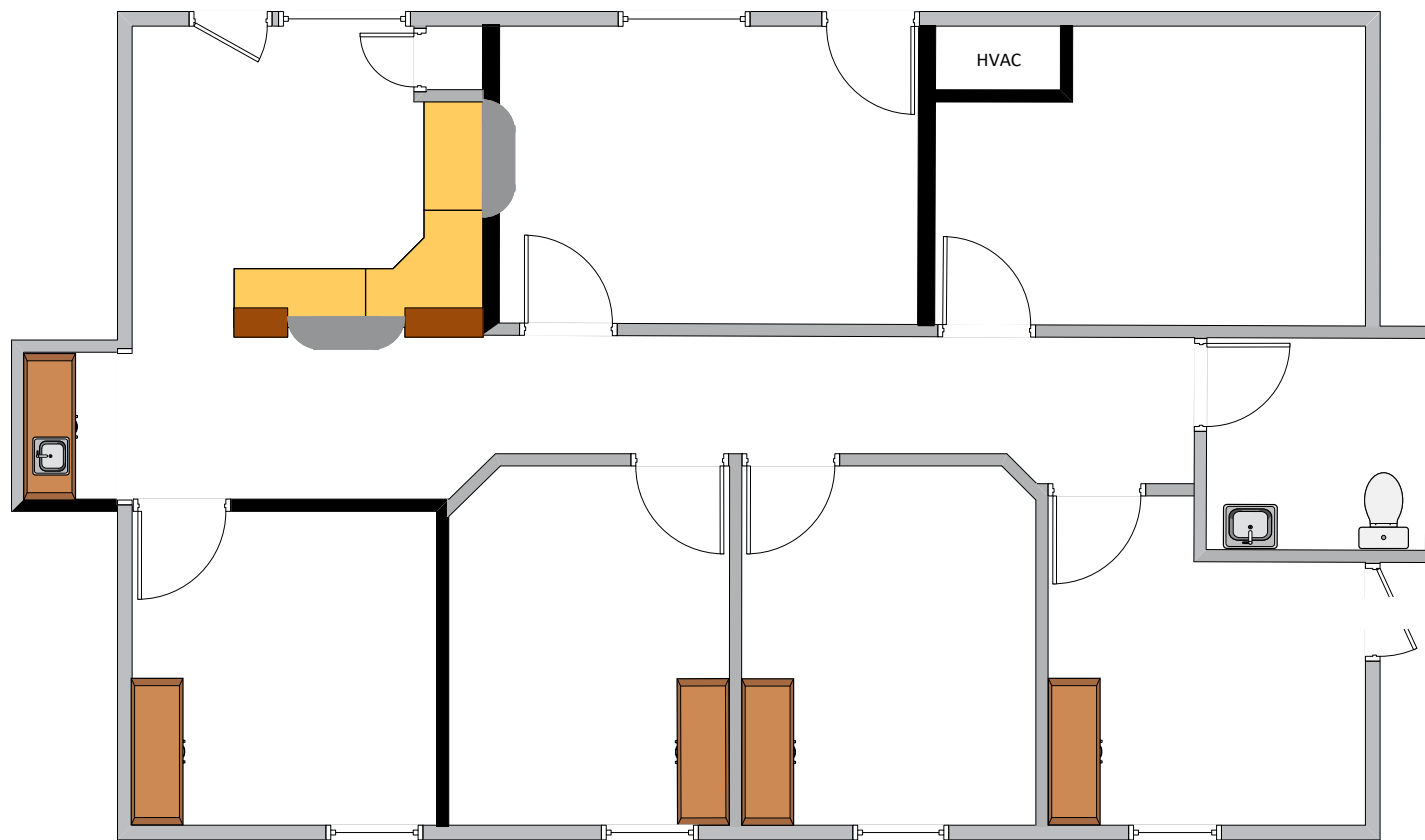
120 LA CASA VIA, WALNUT CREEK, CA

SUITE 205 CHIROPRACTIC OFFICE CONFIGURATION V5

±1,349 SF

BRIAN CLACK
+1 925 279 4654
brian.clack@colliers.com
CA Lic. 01416362

ERIC ERICKSON CCIM SIOR
+1 925 279 5580
eric.erickson@colliers.com
CA Lic. 01177336



120 La Casa Via, Suite 205
Chiropractic Office – 3-5-2020

General Conditions:

1. All countertops max 34" to finished floor
2. No closers on any interior door. Closers on exterior doors leading into 5' hallway

FOR LEASE > MEDICAL / DENTAL SPACE

La Casa Via Medical Center

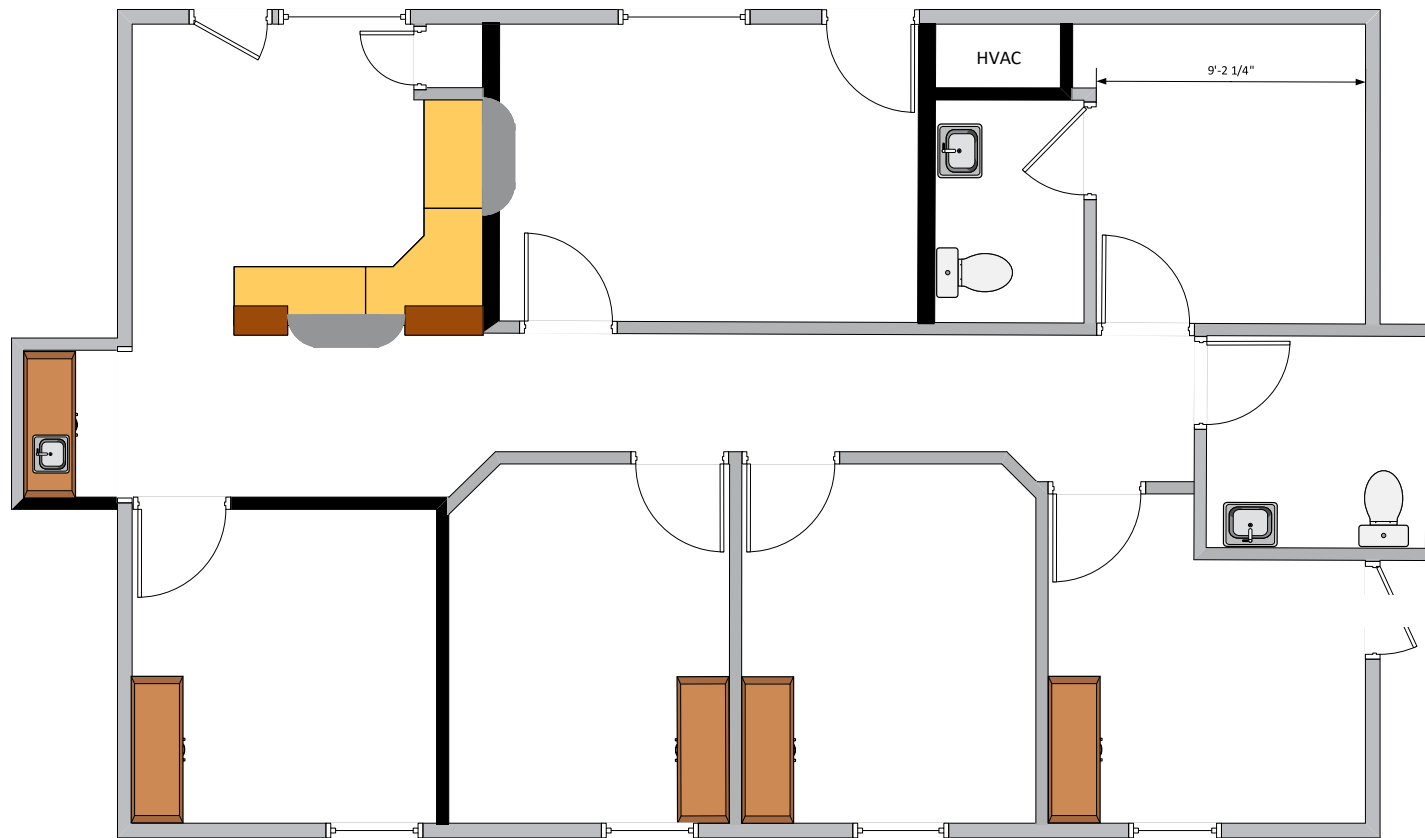
120 LA CASA VIA, WALNUT CREEK, CA

SUITE 205 CHIROPRACTIC OFFICE CONFIGURATION V6

±1,349 SF

BRIAN CLACK
+1 925 279 4654
brian.clack@colliers.com
CA Lic. 01416362

ERIC ERICKSON CCIM SIOR
+1 925 279 5580
eric.erickson@colliers.com
CA Lic. 01177336



120 La Casa Via, Suite 205
Chiropractic Office – 3-5-2020

General Conditions:

1. All countertops max 34" to finished floor
2. No closers on any interior door. Closers on exterior doors leading into 5' hallway

FOR LEASE > MEDICAL / DENTAL SPACE

La Casa Via Medical Center

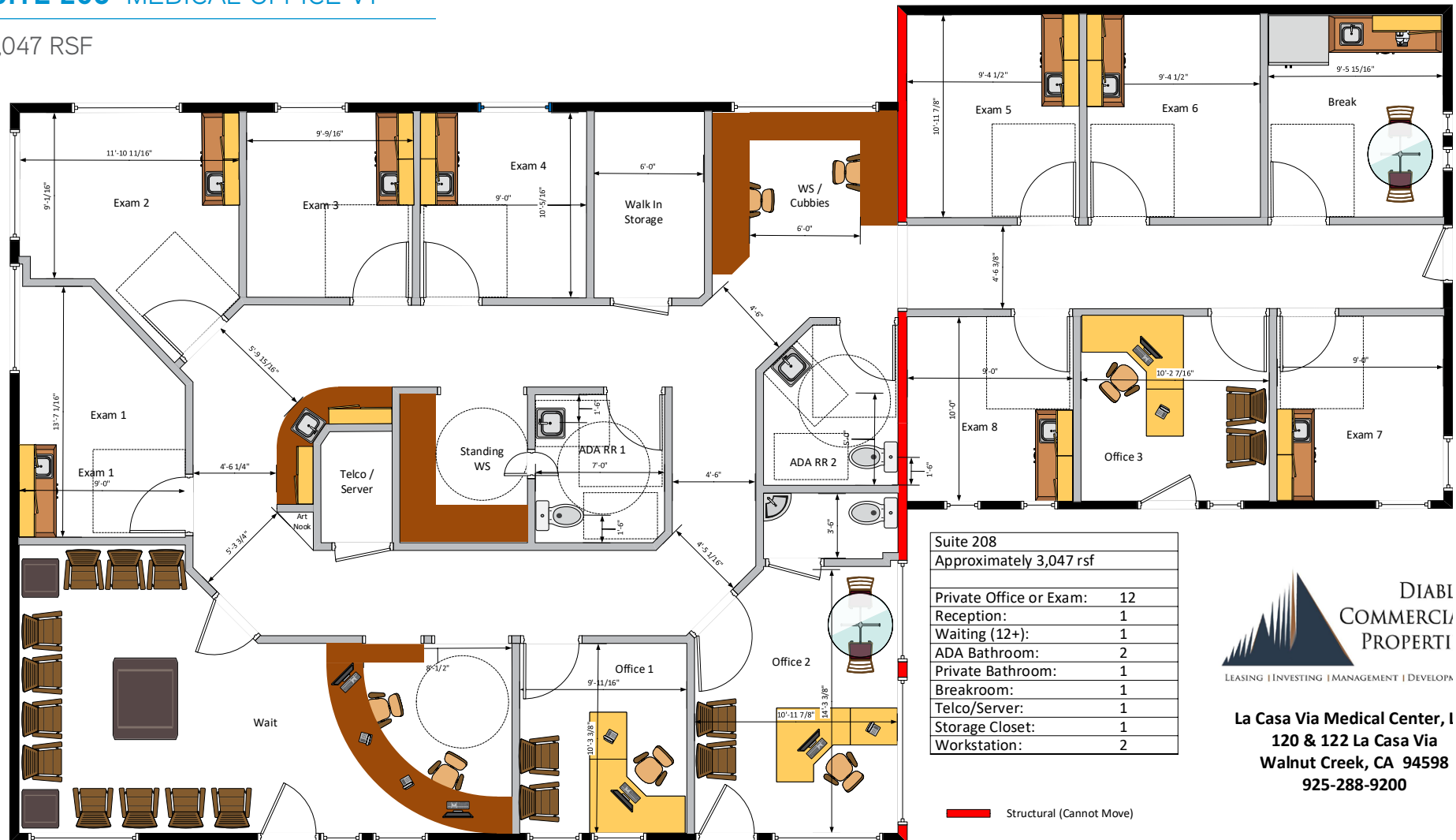
120 LA CASA VIA, WALNUT CREEK, CA

SUITE 208 MEDICAL OFFICE V1

±3,047 RSF

BRIAN CLACK
+1 925 279 4654
brian.clack@colliers.com
CA Lic. 01416362

ERIC ERICKSON CCIM SIOR
+1 925 279 5580
eric.erickson@colliers.com
CA Lic. 01177336



La Casa Via Medical Center, I
120 & 122 La Casa Via
Walnut Creek, CA 94598
925-288-9200

FOR LEASE > MEDICAL / DENTAL SPACE

La Casa Via Medical Center

120 LA CASA VIA, WALNUT CREEK, CA

SUITE 208 MEDICAL OFFICE V2

±3,047 RSF

BRIAN CLACK
+1 925 279 4654
brian.clack@colliers.com
CA Lic. 01416362

ERIC ERICKSON CCIM SIOR
+1 925 279 5580
eric.erickson@colliers.com
CA Lic. 01177336



La Casa Via Medical Center, I
120 & 122 La Casa Via
Walnut Creek, CA 94598
925-288-9200

FOR LEASE > MEDICAL / DENTAL SPACE

La Casa Via Medical Center

122 LA CASA VIA, WALNUT CREEK, CA

SUITE 222

±2,426 RSF

