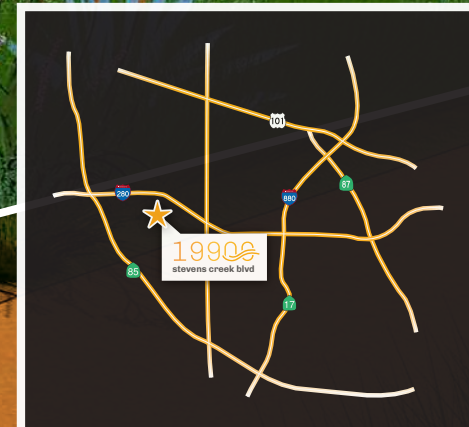


19900

stevens creek blvd

Prime Cupertino Location! ±6,920 SF Available

Single-Story ±28,000 SF Office/Retail Building
FOR LEASE



1990
stevens creek blvd

Project Highlights



- New building design façade with outdoor patio amenity area & indoor bike lockers
- ±6,920 RSF AVAILABLE
3 dedicated HVAC units
private entrance from parking lot
- Open exposed wood beam ceilings to create customized build out with private restroom
- Ability to operate on the weekends and reduce contact with other tenants to “social distance”
- Prominent building and signage on Stevens Creek Blvd
- Easy access to 280 Fwy / Hwy 85
- Walking distance to nearby retail amenities in the “Heart of the City” corridor
- Q1 2021 Occupancy
- 4/1000 parking
- Competitive lease rate / TI package!

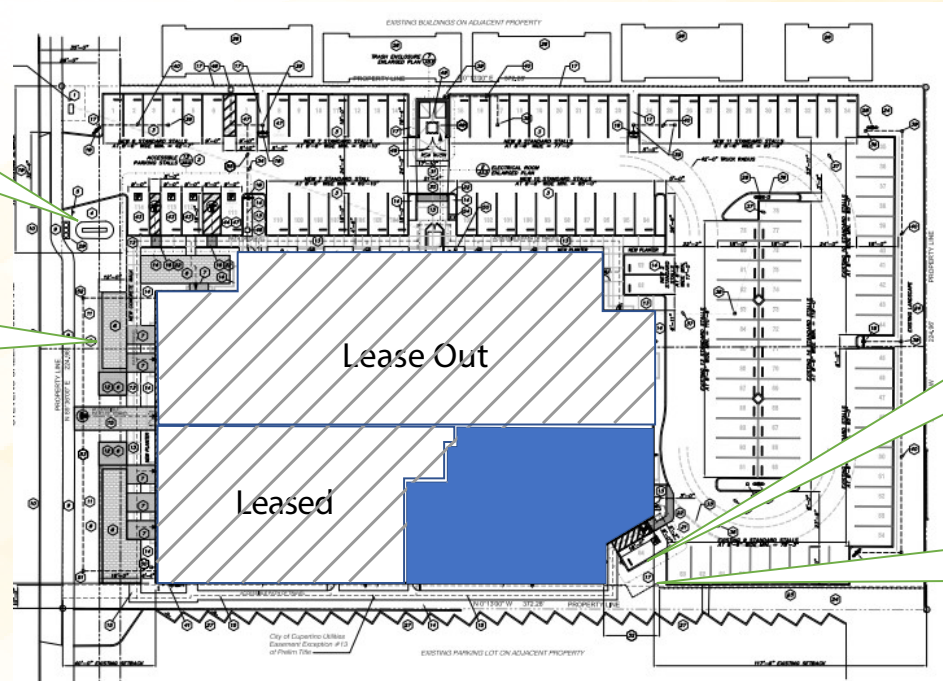
Featuring Outdoor Patio Area



Site Plan

STEVENS CREEK BLVD

Prominent monument signage
Outdoor seating area

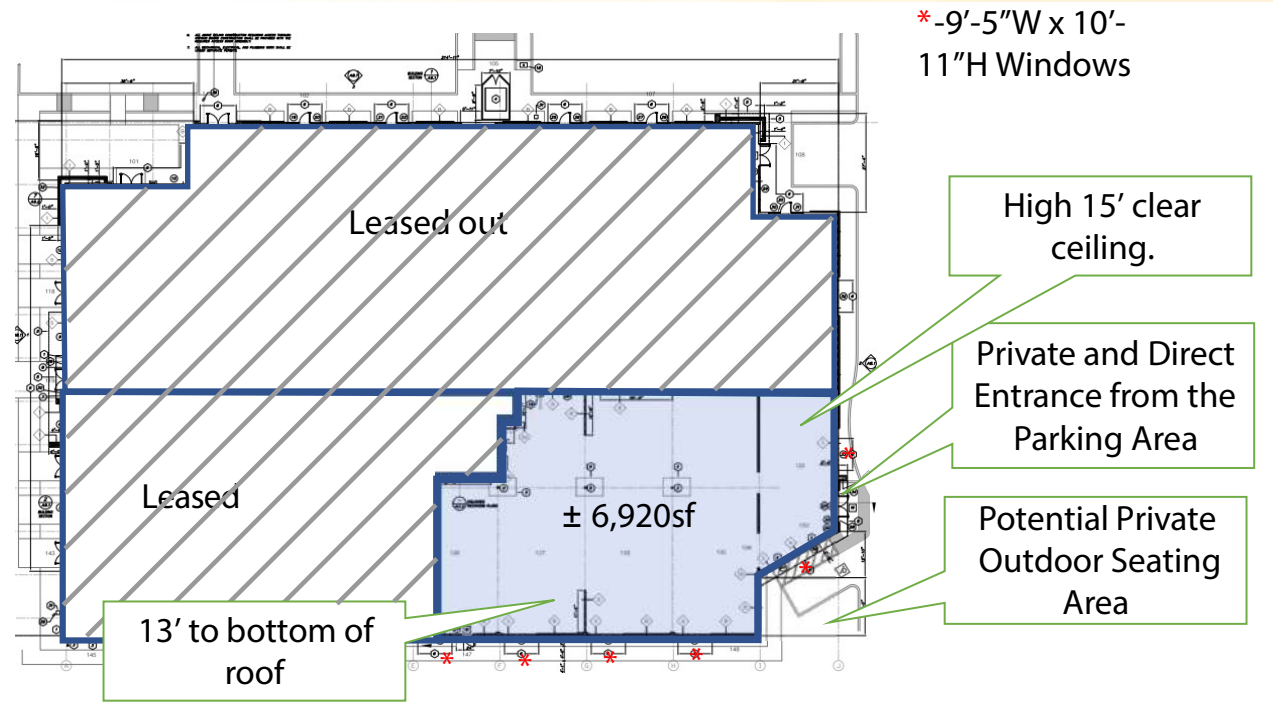


Private and Direct Entrance from the Parking Area
Potential Private Outdoor Seating Area

Proposed Floorplan

±6,920 RSF

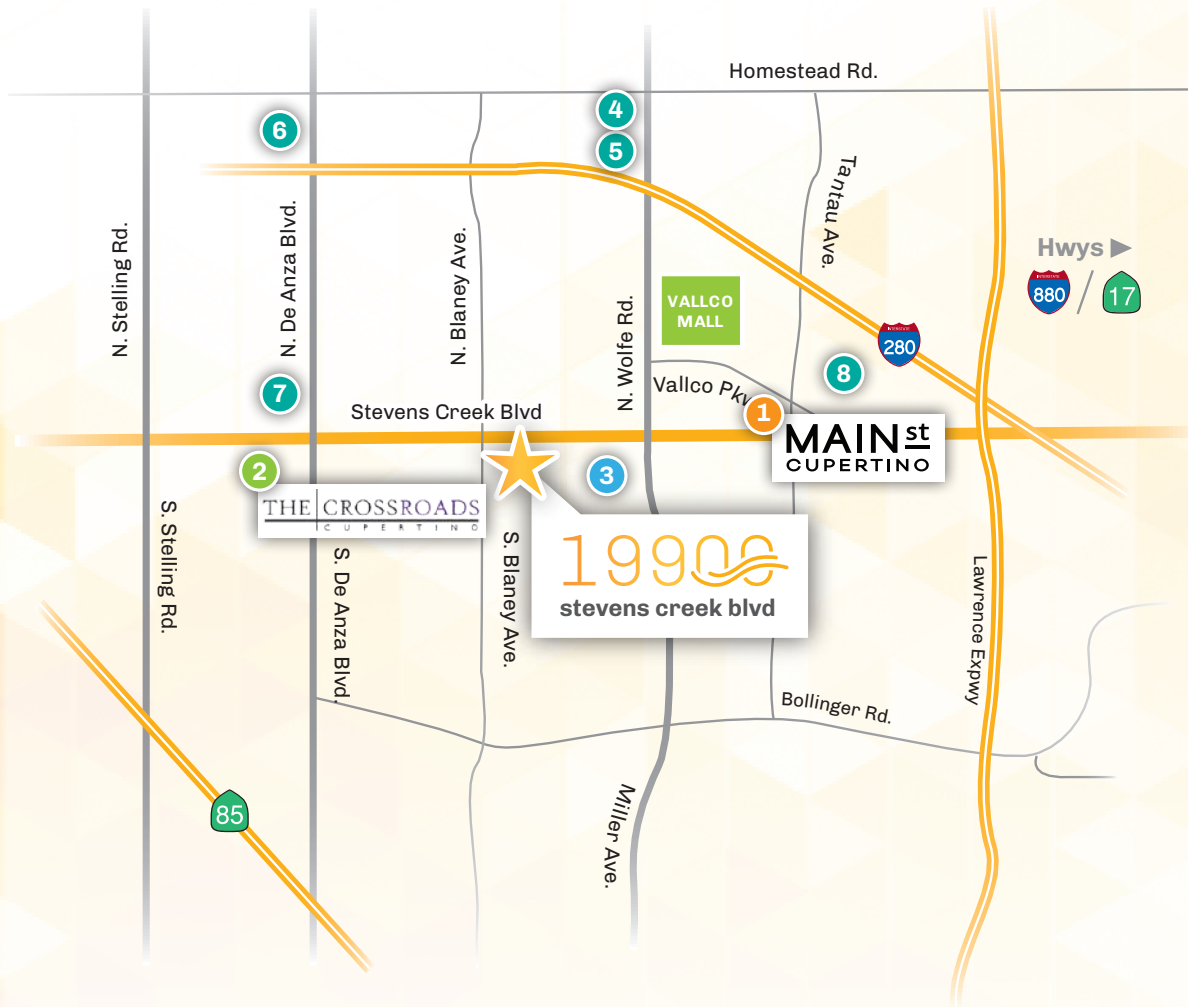
STEVENS CREEK BLVD



Rendering of Interior with Exposed Ceiling



Amenities



1 Main Street Cupertino

85° Bakery
Alexander's Steakhouse
Alexander's Patisserie
AT&T
Bishops Cut and Color
Capezio
Chef Hung
Eureka!
Govlden Vision
Hai Di Lao Hotpot
Howards
Lazy Dog
Meet Fresh
Meriwest Credit Union
Orangetheory Fitness
Oren's Hummus
Panino Giusto
Philz Coffee
Pressed Juicery
Rootstock
Target
TD Ameritrade
Tea Chansii

2 Cupertino Crossroads

Le Boulanger
Armadillo Willy's
Park Place Seafood

3 Marketplace Cupertino

Aloha Fresh
Beard Papa's
Erik's Deli Cafe
Galpao Gaucho
Garlic Mediterranean
Harumi Sushi
La Patisserie Bakery
Legend's Pizza
Makrukai Market
Pacific Precious Metals
Charles Schwab
US Bank
Lily Salon & Day Spa
Kelly Wellness
Ellen Peng DDS,
Family Dentistry
N. California
Health Acupuncture
Daiso

Neighboring Hotels

- 4 Hilton Garden Inn
- 5 Courtyard by Marriott
- 6 Cupertino Inn
- 7 Aloft Hotel
- 8 Woodcrest Hotel

19900

stevens creek blvd



**Newmark
Knight Frank**

Patty Steele

Senior Managing Director

408.982.8463

psteele@ngkf.com

Lic 00839635

The distributor of this communication is performing acts for which a real estate license is required. The information contained herein has been obtained from sources deemed reliable but has not been verified and no guarantee, warranty or representation, either express or implied, is made with respect to such information. Terms of sale or lease and availability are subject to change or withdrawal without notice. 19-1181 • 07/20