

8662 ALICIA DRIVE

8662 Alicia Drive, Easton, MD 21601
Talbot County

PRICE REDUCED!!



FOR SALE

NEARBY AMENITIES:



- Two-story bank branch/office building
- ±5,092 SF Total on two floors
- Built in 2006
- Carpeted offices, kitchenette, and bathroom
- Open bull-pen area on both floors
- Two drive-thru lanes with pitched roofing
- Central hardwood lobby on first floor
- Lay-in fluorescent lighting
- Dual-zoned gas-fired HVAC
- Zoning: CL

Jesse Schwartzman
jschwartzman@klnb.com
443-632-2067

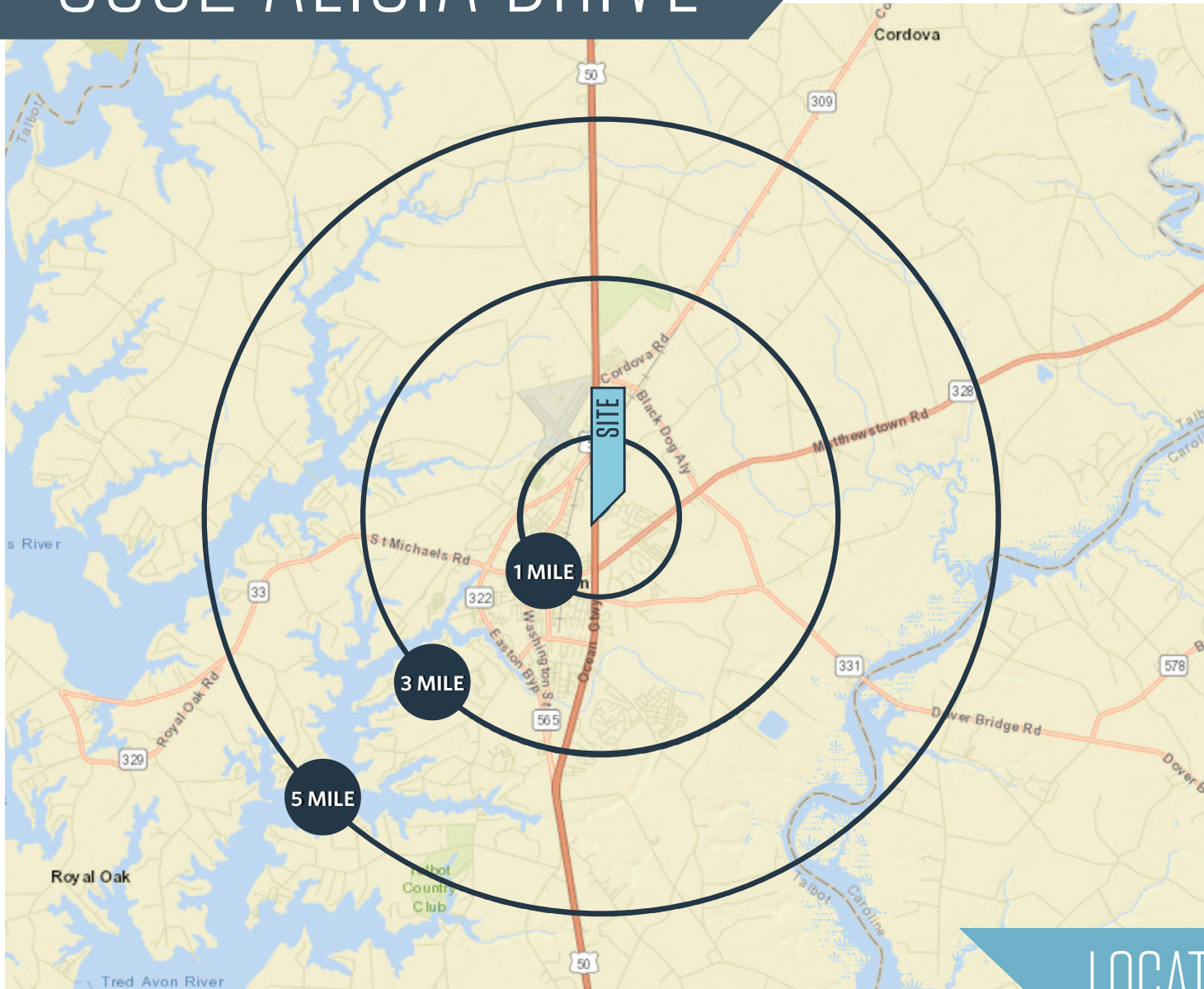
Brad Berzins
bberzins@klnb.com
443-632-2048

100 West Road, Suite 505
Baltimore, MD 21204
klnb.com

NAklnb

8662 ALICIA DRIVE

8662 Alicia Drive, Easton, MD 21601
Talbot County



±5,092 SF total on 2 floors

DEMOGRAPHICS | 2018:

1-MILE	3-MILE	5-MILE
Population		
5,851	17,811	21,838
Daytime Population		
3,243	18,519	19,572
Households		
2,157	7,470	9,166
Average HH Income		
\$66,149	\$76,168	\$81,881

[CLICK TO DOWNLOAD DEMOGRAPHIC REPORT](#)

TRAFFIC COUNTS | 2016:

Route 140 @ Dede Road 44,001 ADT

LOCATION & DEMOGRAPHICS

Jesse Schwartzman
jschwartzman@klnb.com
443-632-2067

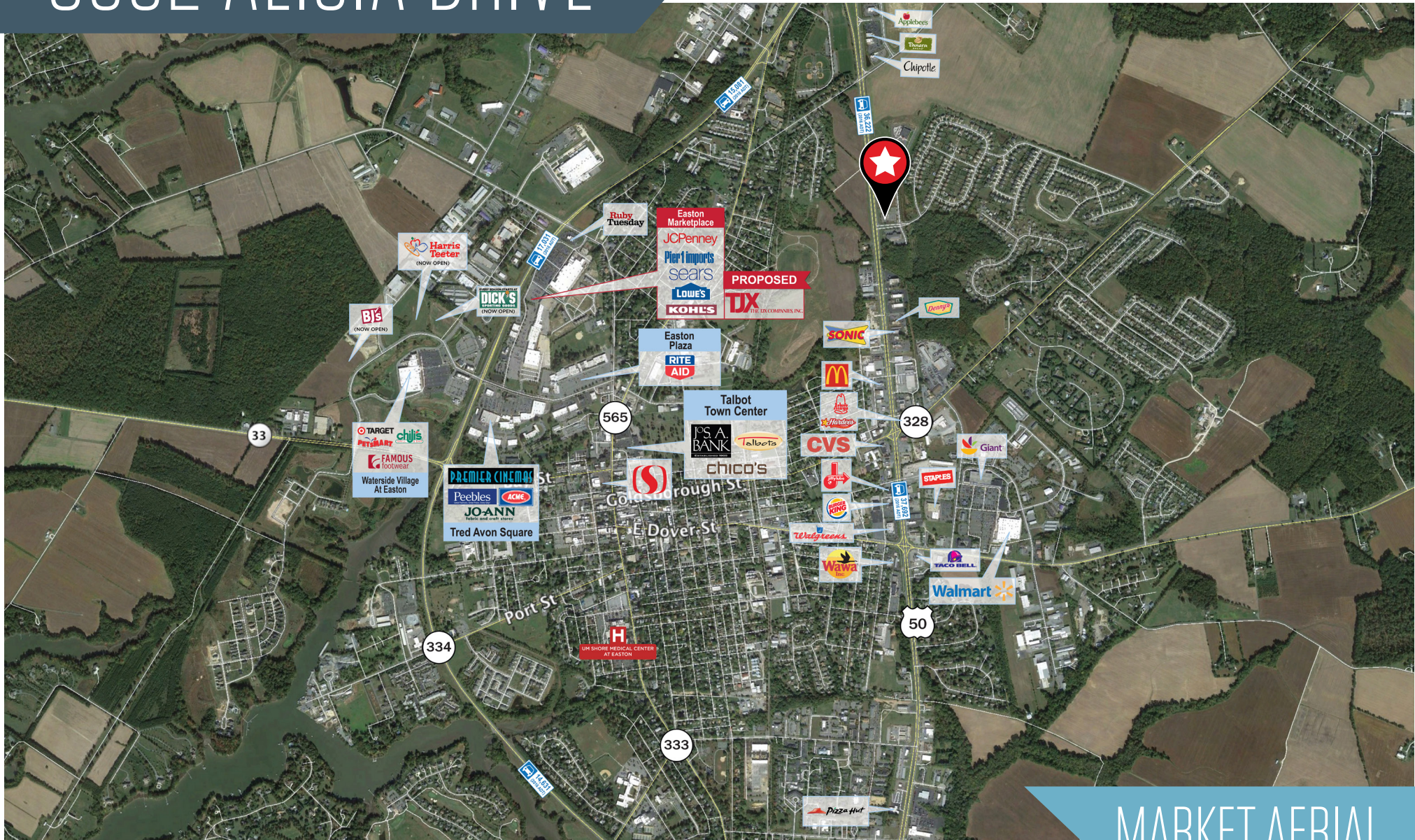
Brad Berzins
bberzins@klnb.com
443-632-2048

100 West Road, Suite 505
Baltimore, MD 21204
klnb.com



8662 ALICIA DRIVE

8662 Alicia Drive, Easton, MD 21601
Talbot County



MARKET AERIAL

Jesse Schwartzman
jschwartzman@klnb.com
443-632-2067

Brad Berzins
bberzins@klnb.com
443-632-2048

100 West Road, Suite 505
Baltimore, MD 21204
klnb.com



8662 ALICIA DRIVE

8662 Alicia Drive, Easton, MD 21601
Talbot County

[CLICK TO VIEW PROPERTY WEBSITE](#)

For More Information, Please Contact:

Jesse Schwartzman

jschwartzman@klnb.com

443-632-2067

Brad Berzins

bberzins@klnb.com

443-632-2048

100 West Road, Suite 505
Baltimore, MD 21204

klnb.com

 facebook.com/KLNB

 [@KLNBLLC](https://twitter.com/KLNBLLC)

 linkedin.com/company/klnb

 instagram.com/klnbllc

While we have no reason to doubt the accuracy of any of the information supplied, we cannot, and do not, guarantee its accuracy. All information should be independently verified prior to a purchase or lease of the property. We are not responsible for errors, omissions, misuse, or misinterpretation of information contained herein and make no warranty of any kind, express or implied, with respect to the property or any other matters.

NAI klnb