

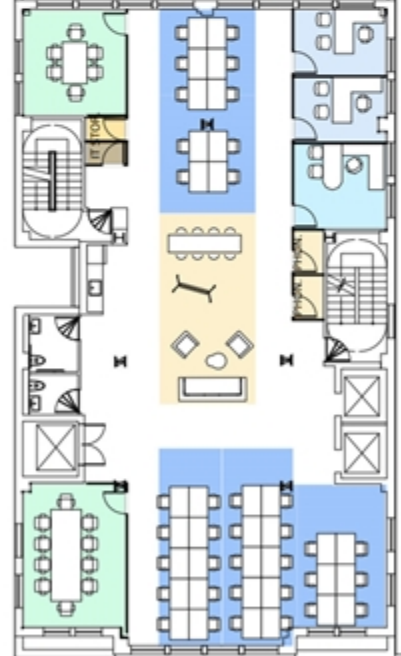
THE LOFTS AT PENN PLAZA

** All spaces are white boxed excluding floors 2 & 3

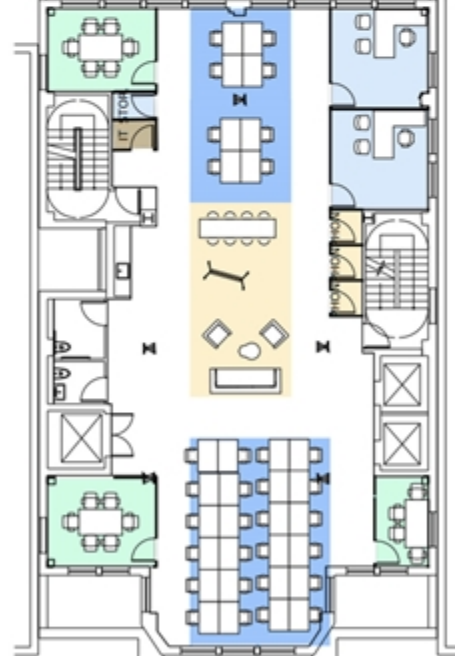
[▶ TAKE A VIRTUAL TOUR](#)

| FLOOR / AREA | TERM | RENT | AVAILABILITY |
|--------------------------------------|------------|-------------|--------------|
| Entire 2nd Floor - 5,974 RSF | Negotiable | \$35.00/RSF | Immediate |
| Entire 3rd Floor - 5,974 RSF | Negotiable | \$35.00/RSF | Immediate |
| Entire 4th Floor - 5,974 RSF | Negotiable | \$35.00/RSF | Immediate |
| Entire 5th Floor - 5,974 RSF | Negotiable | \$35.00/RSF | Immediate |
| Entire 6th Floor - 5,974 RSF | Negotiable | \$35.00/RSF | Immediate |
| Entire 7th Floor - 5,773 RSF | Negotiable | \$35.00/RSF | Immediate |
| Entire 8th Floor - 5,723 RSF | Negotiable | \$35.00/RSF | Immediate |
| Entire 9th Floor - 5,504 RSF | Negotiable | \$35.00/RSF | Immediate |
| Entire 10th Floor - 5,101 RSF | Negotiable | \$35.00/RSF | Immediate |
| Entire 11th Floor - 4,296 RSF | Negotiable | \$35.00/RSF | Immediate |
| Entire 12th Floor - 4,296 RSF | Negotiable | \$35.00/RSF | Immediate |
| Entire 15th Floor - 3,558 RSF | Negotiable | \$35.00/RSF | Immediate |

ENTIRE 2ND - 8TH FLOORS



ENTIRE 9TH FLOOR INCLUDES A PRIVATE TERRACE



JD COHEN
212-850-5476
jd.cohen@nrmk.com

ALEXANDER KESSELER
212-372-0766
alexander.kessler@nrmk.com

ARIEL HARWOOD
212-372-2077
ariel.harwood@nrmk.com

NEWMARK

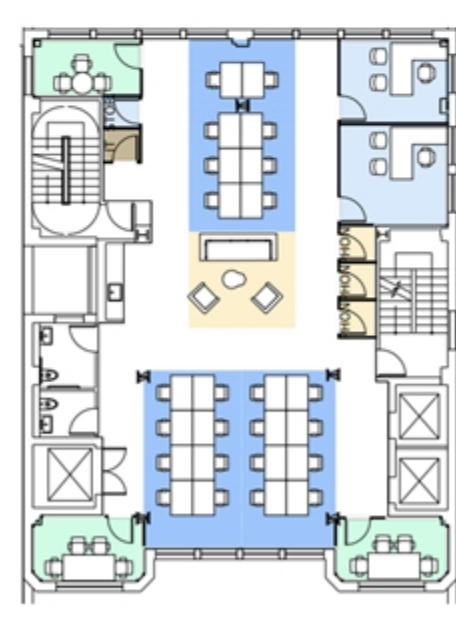
ENTIRE 10TH FLOOR INCLUDES A PRIVATE TERRACE



ENTIRE 11TH FLOOR



ENTIRE 12TH FLOOR



ENTIRE 15TH FLOOR INCLUDES A PRIVATE TERRACE



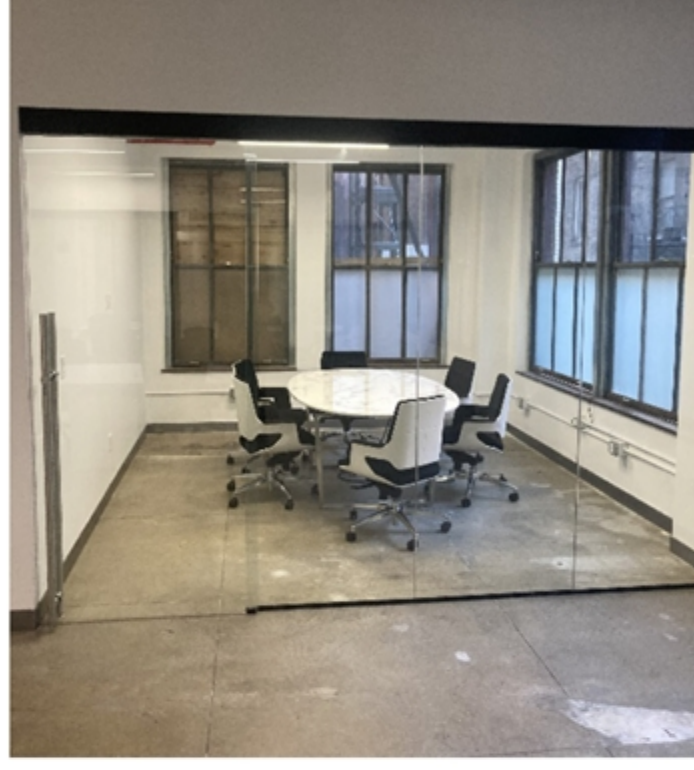
JD COHEN
212-850-5476
jd.cohen@nrmk.com

ALEXANDER KESSELER
212-372-0766
alexander.kessler@nrmk.com

ARIEL HARWOOD
212-372-2077
ariel.harwood@nrmk.com

NEWMARK

ENTIRE 2ND AND 3RD FLOORS - PREBUILT



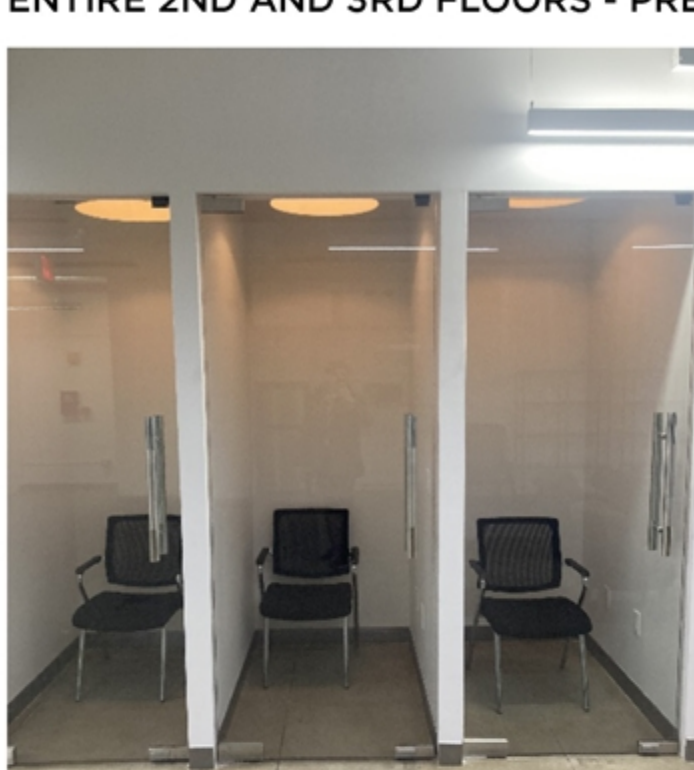
JD COHEN
212-850-5476
jd.cohen@nrmk.com

ALEXANDER KESSELER
212-372-0766
alexander.kessler@nrmk.com

ARIEL HARWOOD
212-372-2077
ariel.harwood@nrmk.com

NEWMARK

ENTIRE 2ND AND 3RD FLOORS - PREBUILT



JD COHEN
212-850-5476
jd.cohen@nrmk.com

ALEXANDER KESSELER
212-372-0766
alexander.kessler@nrmk.com

ARIEL HARWOOD
212-372-2077
ariel.harwood@nrmk.com

NEWMARK

[DOWNLOAD BROCHURE](#)

125 Park Avenue, New York, NY 10017 | 212-372-2000

The information contained herein has been obtained from sources deemed reliable but has not been verified and no guarantee, warranty or representation, either express or implied, is made with respect to such information. Terms of sale or lease and availability are subject to change or withdrawal without notice.

©2022 Newmark. All Rights Reserved.