

# Victorian Office for Lease

631 Emerson Street

Palo Alto, CA



## ±1,025 SF Available

As the exclusive agents, we are pleased to offer the following space:



- ◆ First Floor: ±1,025 Square Feet
- ◆ Available Now
- ◆ Located in the Heart of Downtown Palo Alto
- ◆ Exquisite Victorian Commercial Building Renovated to Current Codes
- ◆ Operable Windows, Deck, Lots of Charm
- ◆ High End Shared Kitchen and Restrooms
- ◆ City Hall Parking Within One Block

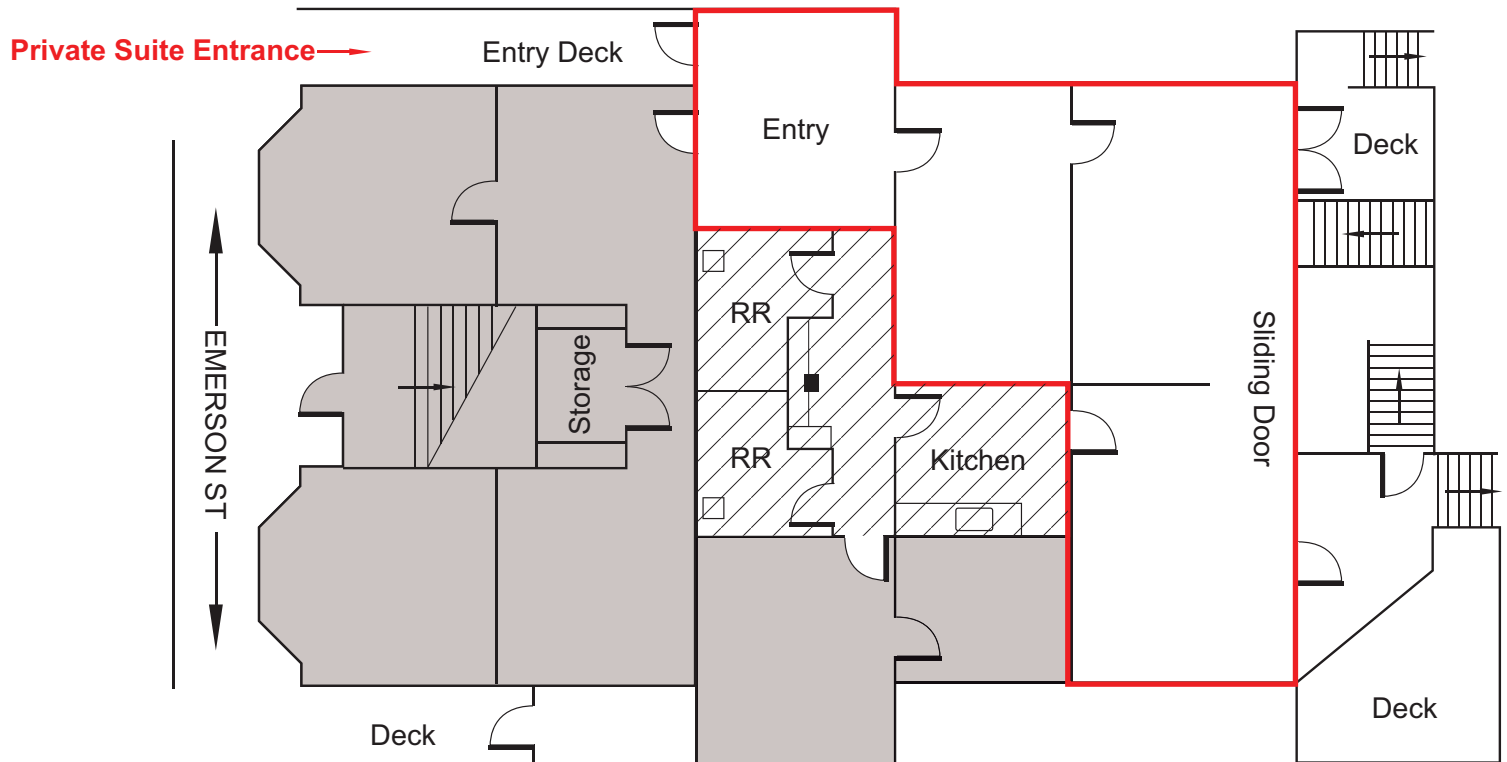


**Jon Cannon** 650.688.8525 [jcannon@ngkf.com](mailto:jcannon@ngkf.com) CA RE License# 01836599  
**Austin O'Such** 650.688.8503 [austin.osuch@ngkf.com](mailto:austin.osuch@ngkf.com) CA RE License# 02064631  
245 Lytton Avenue, Suite 150, Palo Alto, CA 94301 [www.ngkf.com](http://www.ngkf.com)

# Victorian Office for Lease

631 Emerson Street

Palo Alto, CA



- AVAILABLE: ±1,025 SF
- COMMON AREA (Shared with First Floor Tenant)
- LEASED



**Jon Cannon** 650.688.8525 [jcannon@ngkf.com](mailto:jcannon@ngkf.com) CA RE License# 01836599  
**Austin O'Such** 650.688.8503 [austin.osuch@ngkf.com](mailto:austin.osuch@ngkf.com) CA RE License# 02064631  
245 Lytton Avenue, Suite 150, Palo Alto, CA 94301 [www.ngkf.com](http://www.ngkf.com)