

FOR LEASE  
B4: 6,970 SF

CLAY ST BUSINESS PARK I  
116 CLAY ST NW | AUBURN, WA



## FEATURES

- Small warehouse space with dock high and grade level loading
- 24' clear height
- Local ownership
- Tilt-up construction
- Fully sprinklered buildings
- Convenient access to Hwy-167 and Hwy-18
- Flexible floor plans
- Built in 1997
- Current Availabilities on back



900 SW 16<sup>th</sup> St, Ste 100  
Renton, WA 98057  
(206) 244-0770  
[www.andoverco.com](http://www.andoverco.com)

### EXCLUSIVELY OFFERED BY:

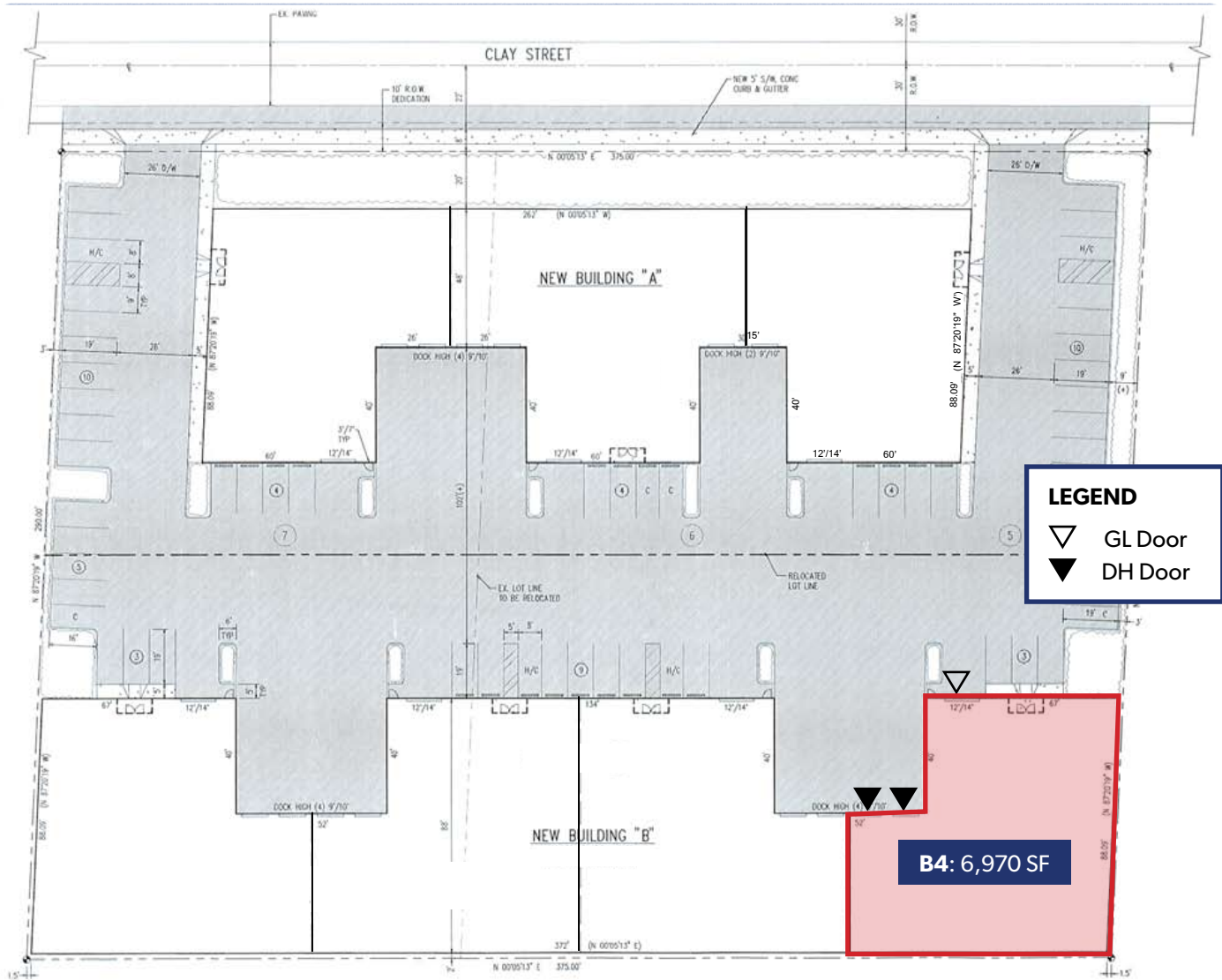
**Jeff Crane**  
(206) 336-5336  
[jcrane@andoverco.com](mailto:jcrane@andoverco.com)

**Brian Bruininks, CCIM**  
(206) 336-5324  
[bbruininks@andoverco.com](mailto:bbruininks@andoverco.com)

*The information contained herein has been obtained from reliable sources, but is not guaranteed. A prospective buyer/tenant should verify each item relating to this property and all information contained herein.*

**FOR LEASE**  
**B4: 6,970 SF**

**CLAY ST BUSINESS PARK I**  
 116 CLAY ST NW | AUBURN, WA



UNIT #	TOTAL SF ±	OFFICE SF ±	LOADING	RATES	AVAILABLE
--------	------------	-------------	---------	-------	-----------

B4	6,970	970	2 DH, 1 GL	\$0.85/SF/Month, Blended (NNN's \$0.20/SF/Month)	04/01/2021
----	-------	-----	------------	---	------------



900 SW 16<sup>th</sup> St, Ste 100  
 Renton, WA 98057  
 (206) 244-0770  
[www.andoverco.com](http://www.andoverco.com)

**EXCLUSIVELY OFFERED BY:**

**Jeff Crane**  
 (206) 336-5336  
[jcrane@andoverco.com](mailto:jcrane@andoverco.com)

**Brian Bruininks, CCIM**  
 (206) 336-5324  
[bbruininks@andoverco.com](mailto:bbruininks@andoverco.com)

*The information contained herein has been obtained from reliable sources, but is not guaranteed. A prospective buyer/tenant should verify each item relating to this property and all information contained herein.*