

FOR SALE/LEASE

3.5 ACRES
4805 S ACRES DRIVE
HOUSTON, TX 77048

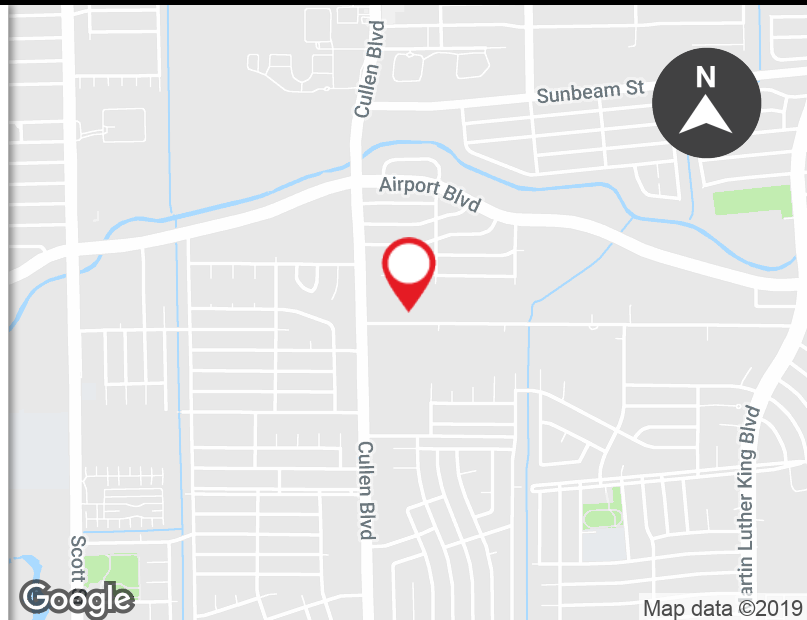


Map data ©2019 Imagery ©2019 , DigitalGlobe, Houston-Galveston Area Council, Texas General Land Office, U.S. Geological Survey, USDA Farm Service Agency

HIGHLY MOTIVATED SELLER | BRING ALL OFFERS

PROPERTY FEATURES:

- Excellent land site in south Houston
- All utilities laid - city water & sewer - natural gas lines
- Multiple great uses - multifamily development or industrial
- 4 miles from William P Hobby Airport; 9 miles from Downtown Houston
- Close access to Hwy 288 and Airport Boulevard
- Lease Rate: \$3,500 per month
- Sale Price - \$425,000



FOR MORE INFORMATION PLEASE CONTACT:

MARK ZEIDMAN
mark.zeidman@freg.com

STEVEN QUIROGA
steven.quiroga@freg.com

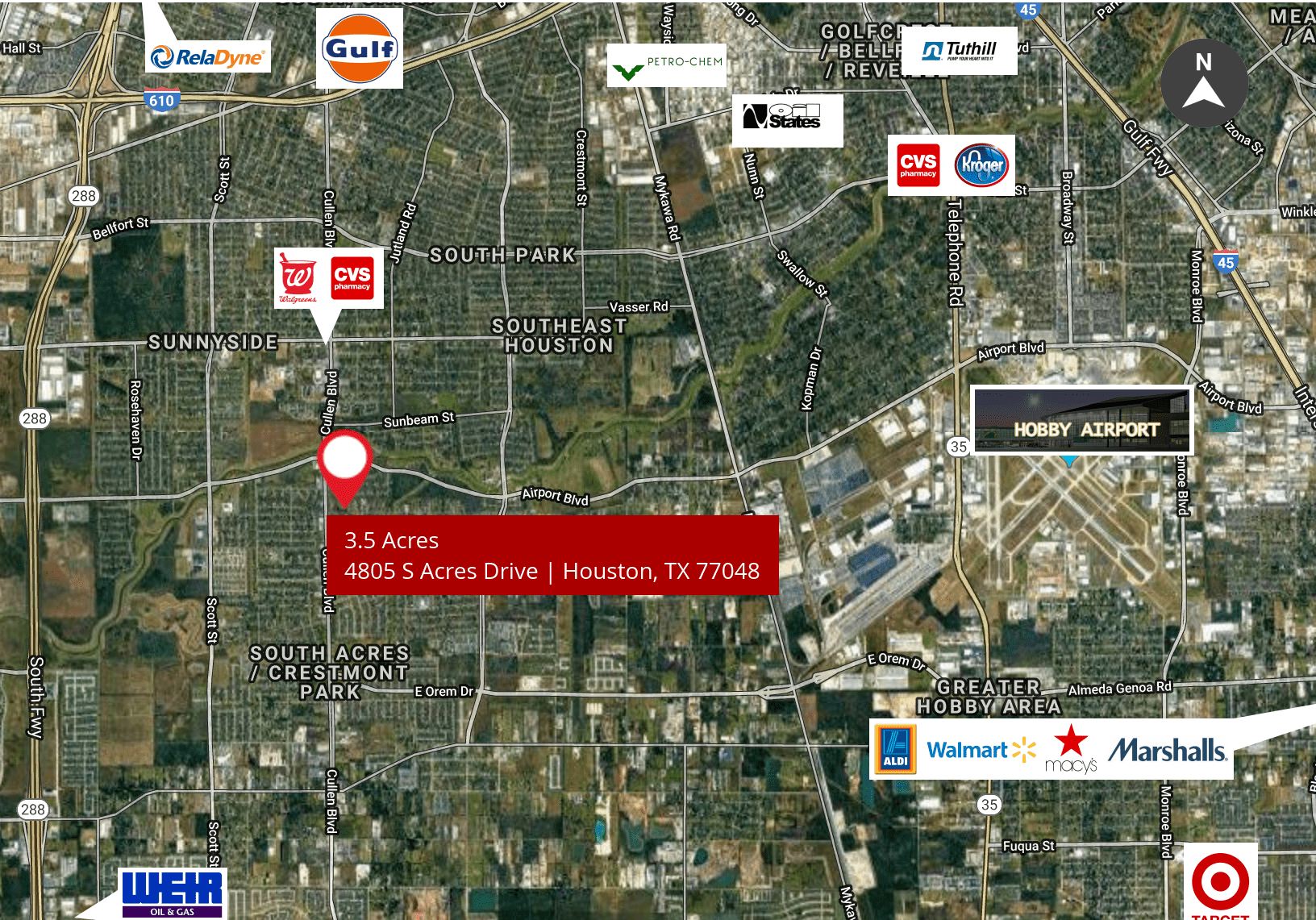
281.599.9000

eCODE 196

The information provided herein along with any attachment(s) was obtained from sources believed to be reliable, however, Friedman Real Estate makes no guarantees, warranties, or representations as to the completeness or accuracy of such information and legal counsel is advised. All information provided is subject to verification and no liability for reliance on such information or errors or omissions is assumed. The information of this property is submitted subject to errors, omissions, change of price or conditions, prior sale or lease, or withdrawal without notice. Copyright © 2018 Friedman Real Estate. All rights reserved.

FOR SALE/LEASE

3.5 ACRES
4805 S ACRES DRIVE
HOUSTON, TX 77048



Map data ©2019 Imagery ©2019, DigitalGlobe, Houston-Galveston Area Council, Landsat / Copernicus, Texas General Land Office, U.S. Geological Survey, USDA Farm Service Agency

TRAFFIC COUNTS

INTERSECTION	CARS PER DAY
Cullen Blvd	15,660
South Acres Dr	3,500
-	-
-	-

DEMOGRAPHICS

	1 MILE	3 MILES	5 MILES
Total Households	3,655	25,612	70,992
Total Population	10,215	75,583	201,775
Average HH Income	\$38,011	\$40,890	\$48,639

FOR MORE INFORMATION PLEASE CONTACT:

MARK ZEIDMAN mark.zeidman@freg.com
STEVEN QUIROGA steven.quiroga@freg.com

281.599.9000
eCODE 196