



**3803  
S. Bascom Ave.  
Campbell, CA**

**CLASS A MEDICAL OFFICE SUITES**



**PROPERTY INFORMATION:**

- Class A Medical Building
- Available Suites:
  - GROUND FLOOR: Suite 104—3,648± RSF, Divisible to 1,950± RSF and 1,698± RSF
  - SECOND FLOOR: Suite 200—6,167± RSF, Divisible to 1,258± RSF
  - Suite 208—892± RSF
- High Identity Location
- Easy Access to Hwys 17 and 85
- Avg. Daily Traffic on Bascom: 28,000±
- Building Has Ample Available Power
- Underground and Surface Parking
- Less Than A Mile From Good Samaritan Hospital
- Call For More Information and To Tour
- \$3.25, Mod. Gross, (Tenant Pays for Utilities & Janitorial)

**ESTIMATED DEMOGRAPHICS:**

	POPULATION	AVG. HH INCOME
1 MILE	16,879	\$123,200
3 MILES	178,569	\$133,200
5 MILES	426,067	\$132,613

**FOR MORE INFORMATION CONTACT:**

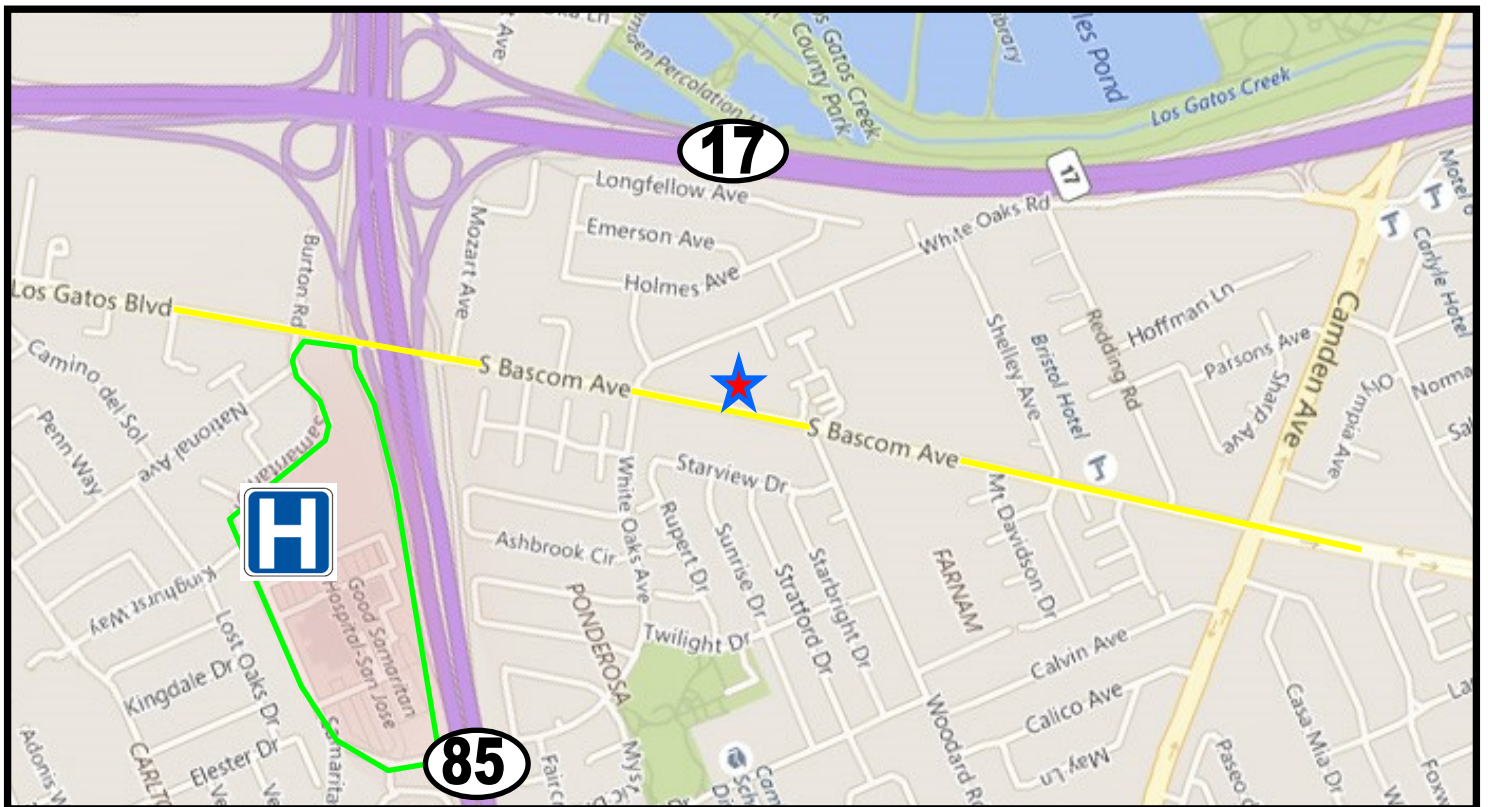
**MEACHAM/OPPENHEIMER, INC.**  
CORFAC INTERNATIONAL  
8 No. San Pedro St., Suite 300  
San Jose, California 95110  
Tel: 408.378.5900  
Fax: 408.378.5903  
www.moinc.net

**Michael Joseph**  
Lic. #01382905  
[MJoseph@moinc.net](mailto:MJoseph@moinc.net)  
**(408) 477-2502 Direct**  
**(408) 375-5572 Cell**

**Josh Gispan**  
Lic. #00974978  
[JGispan@moinc.net](mailto:JGispan@moinc.net)  
**(408) 477-2511**



# 3803 S. Bascom Ave. • Campbell, California 95008



**MEACHAM/OPPENHEIMER, INC.**  
**CORFAC INTERNATIONAL**  
8 No. San Pedro St., Suite 300  
San Jose, California 95110  
Tel: 408.378.5900  
[www.moinc.net](http://www.moinc.net)

**Michael Joseph**  
Lic. #01382905  
[MJoseph@moinc.net](mailto:MJoseph@moinc.net)  
(408) 477-2502 Direct  
(408) 378-5900

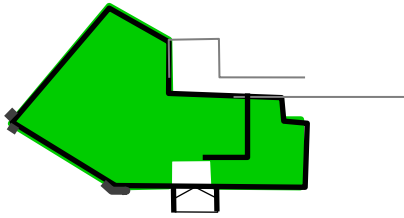
**Josh Gispan**  
Lic. #00974978  
[JGispan@moinc.net](mailto:JGispan@moinc.net)  
(408) 477-2511





# 3803 S. Bascom Ave. • Campbell, California 95008

Suite 200– 6,167± RSF

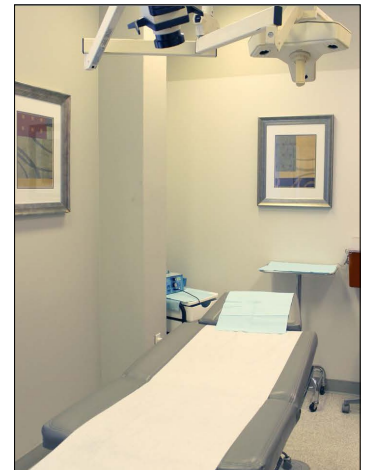
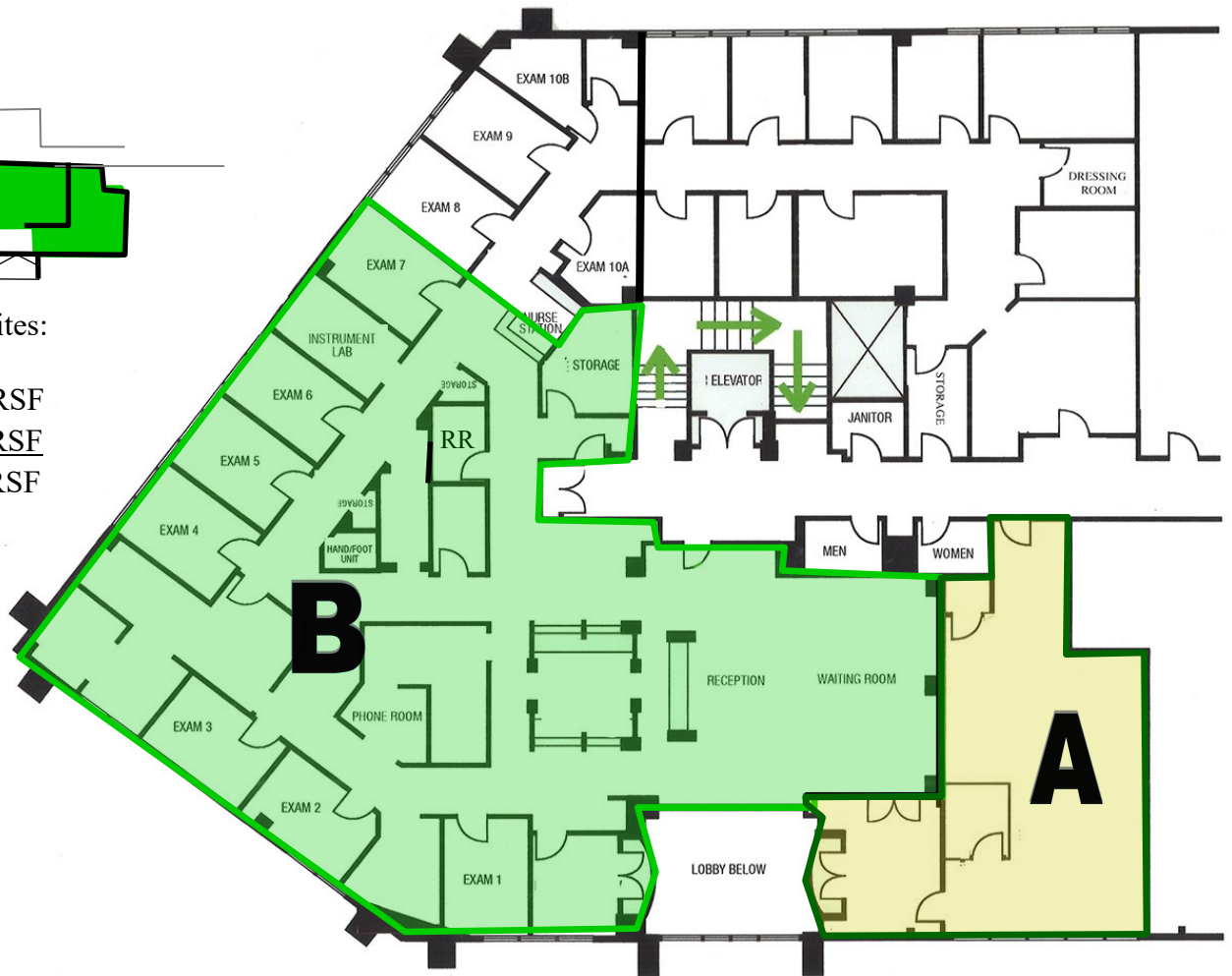


Divisible to Suites:

A— 1,258± RSF

B— 4,909± RSF

Total 6,167± RSF



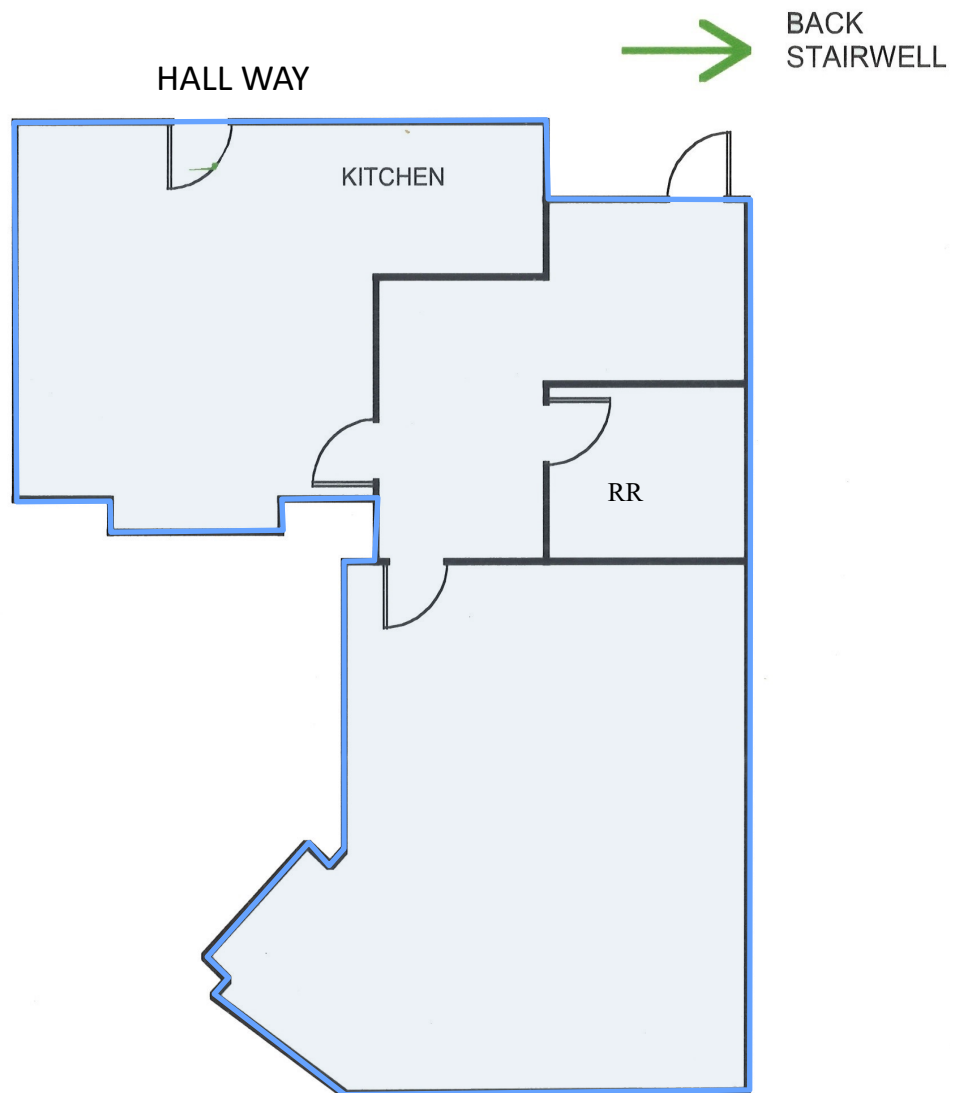
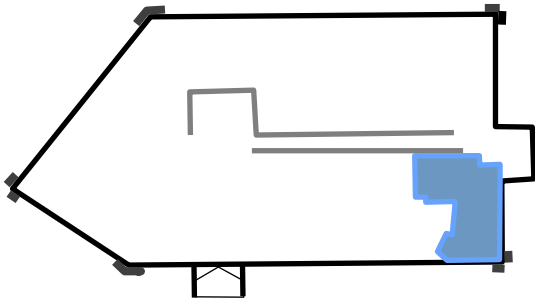
**MEACHAM/OPPENHEIMER, INC.**  
**CORFAC INTERNATIONAL**  
8 No. San Pedro St., Suite 300  
San Jose, California 95110  
Tel: 408.378.5900  
[www.moinc.net](http://www.moinc.net)

**Michael Joseph**  
Lic. #01382905  
[MJoseph@moinc.net](mailto:MJoseph@moinc.net)  
**(408) 477-2502 Direct**  
**(408) 378-5900**

**Josh Gispan**  
Lic. #00974978  
[JGispan@moinc.net](mailto:JGispan@moinc.net)  
**(408) 477-2511**

# 3803 S. Bascom Ave. • Campbell, California 95008

Suite 208 – 892± RSF



**MEACHAM/OPPENHEIMER, INC.**  
**CORFAC INTERNATIONAL**  
8 No. San Pedro St., Suite 300  
San Jose, California 95110  
Tel: 408.378.5900  
[www.moinc.net](http://www.moinc.net)

**Michael Joseph**  
Lic. #01382905  
[MJoseph@moinc.net](mailto:MJoseph@moinc.net)  
**(408) 477-2502 Direct**  
**(408) 378-5900**

**Josh Gispan**  
Lic. #00974978  
[JGispan@moinc.net](mailto:JGispan@moinc.net)  
**(408) 477-2511**