

AVAILABLE

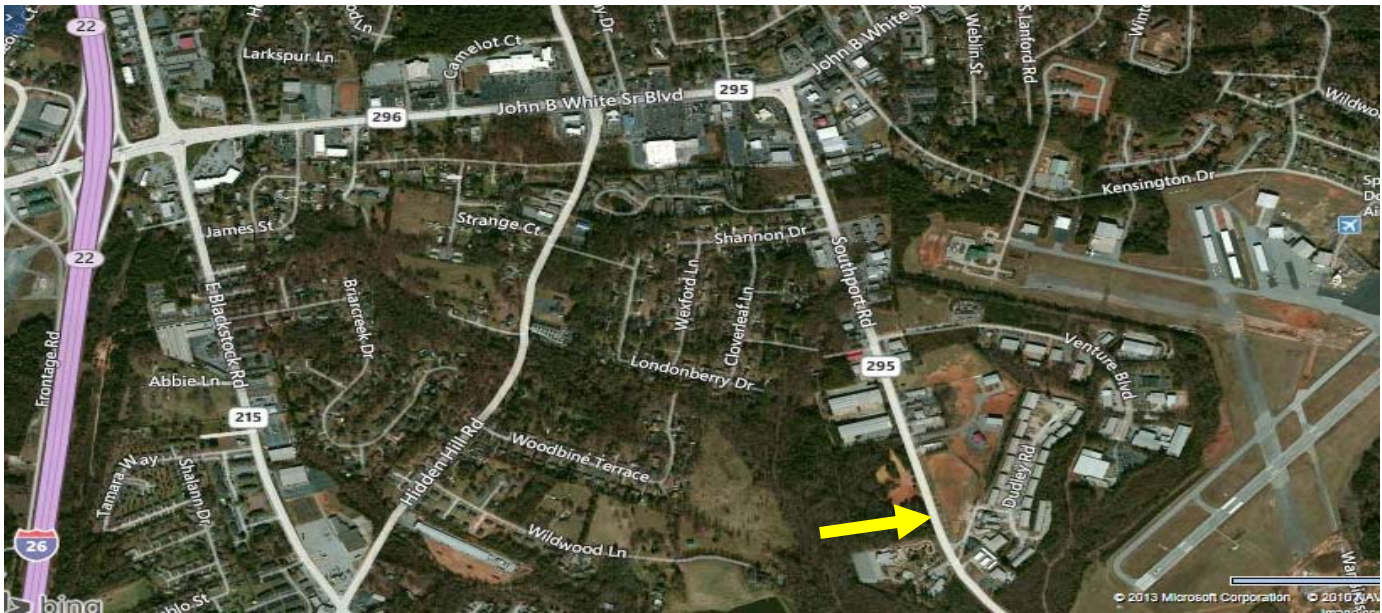
221 Southport Road

Spartanburg, SC

Site Analysis

Commercial Sales

Development



- 6.3± acres located on Southport Road (Hwy 295)
- 880'± road frontage on Southport Road
- Spartanburg County Tax Map # 6-25-00-164.00
- No zoning, located in Spartanburg County
- Approximately .5 miles from John B. White Sr. Blvd. and 1.5± miles to I-26.
- All utilities available to site

Sale Price:

\$100,000 front acreage

\$59,000 rear acreage



No warranty or representation, expressed or implied, is made to the accuracy of the information contained herein, and the same is submitted subject to errors, omissions, change of price, rental or other conditions, imposed by the principles.



Andy Hayes/Ben Hines, CFP, CCIM

380 S. Pine Street

Spartanburg, SC 29302

Tel 864.583.1001 C – 864-706-0189

Fax 864.585.6188

ahayes@spencerhines.com

benhines@spencerhines.com

www.spencerhines.com