



Property Highlights

- ±15,488 SF within a ±99,792 SF building
- Dimensions: ±88' wide x ±176' deep
- Concrete tilt-up construction

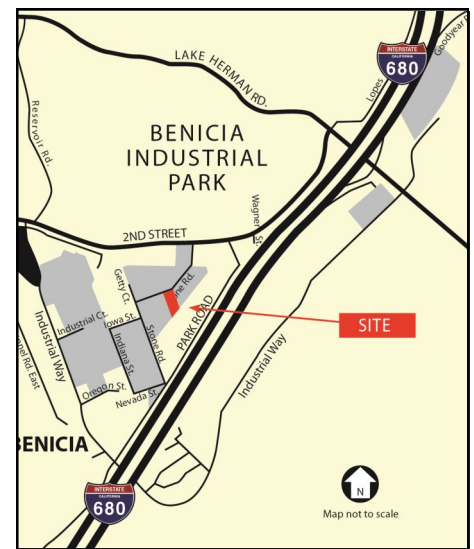
Office features:

- ±1,000 SF Office
- 3 private offices, Breakroom, Reception, 2 restrooms

Warehouse features:

- 1 dock-high door (12'W x 10'D) - front
- 1 grade-level door (12'W x 14'D)
- ±24' clear height
- Sprinklered: .30/3,000 GPM
- ±22' wide x ±44' deep column spacing

[View site specific COVID-19 Prevention plan](#)



For more information, please contact:

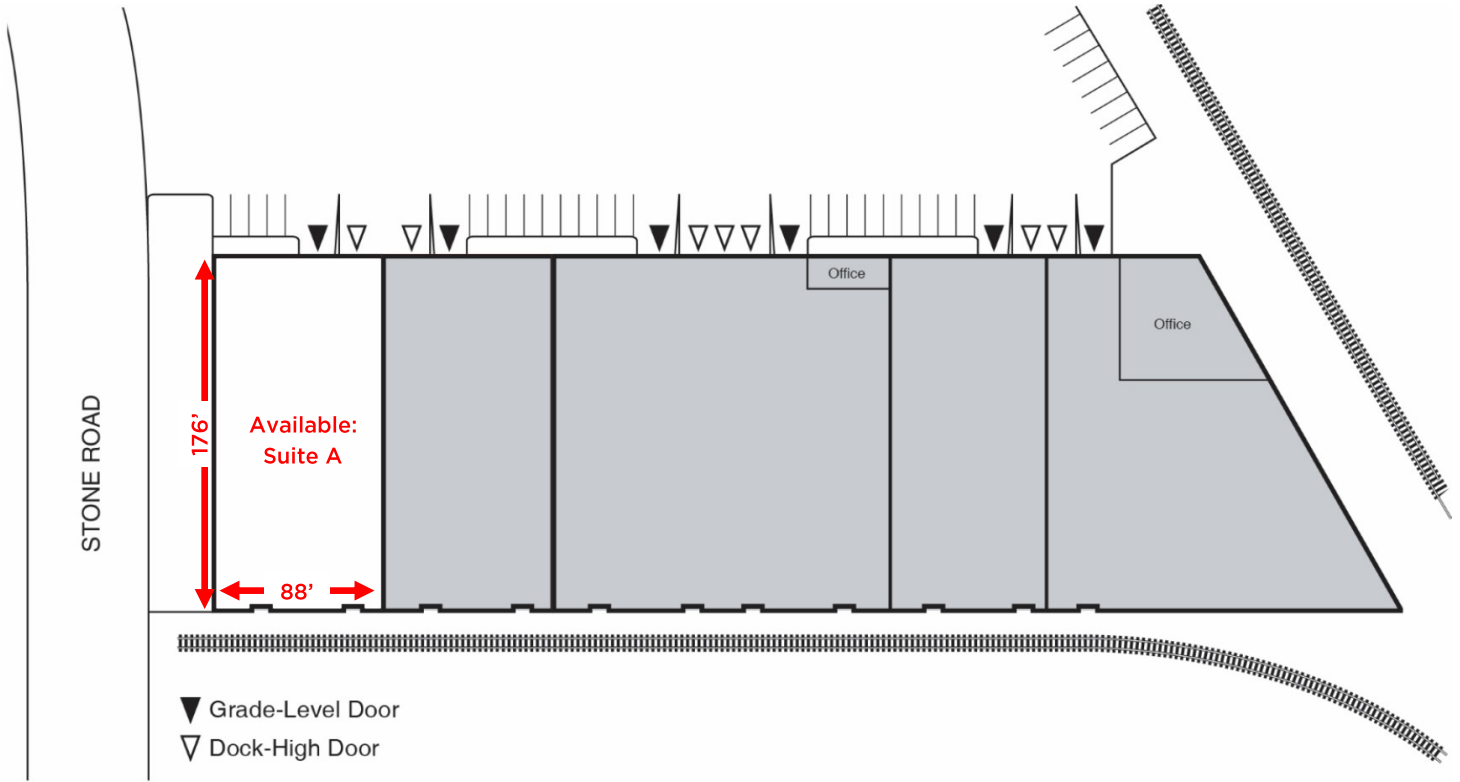
Tony Binswanger
925.627.2482
Tony.Binswanger@cushwake.com
LIC #01861701

Brooks Pedder, SIOR
925.627.2480
Brooks.Pedder@cushwake.com
LIC #00902154

Bo Harkins
925.627.2481
Bo.Harkins@cushwake.com
LIC #01943785



Site plan:



For more information, please contact:

Tony Binswanger
925.627.2482
Tony.Binswanger@cushwake.com
LIC #01861701

Brooks Pedder, SIOR
925.627.2480
Brooks.Pedder@cushwake.com
LIC #00902154

Bo Harkins
925.627.2481
Bo.Harkins@cushwake.com
LIC #01943785



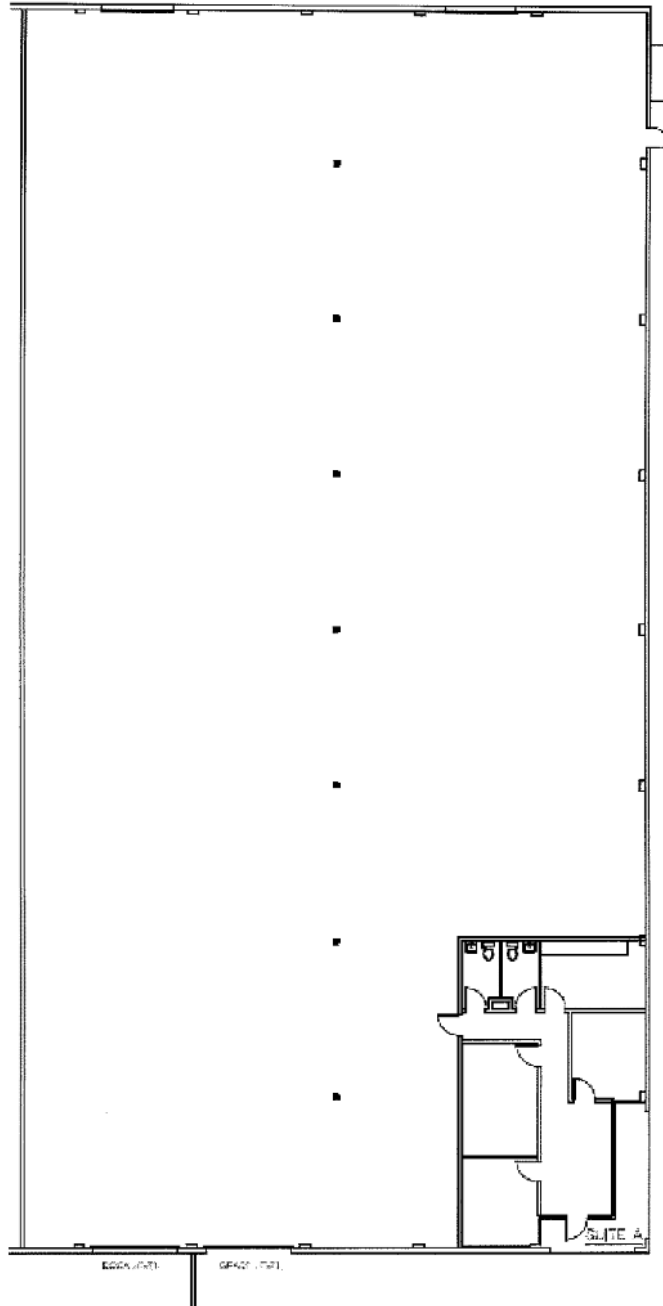
**CUSHMAN &
WAKEFIELD**

FOR SUBLEASE

Benicia Industrial Park

537 Stone Road, Suite A • Benicia, California

Floor plan:



For more information, please contact:

Tony Binswanger
925.627.2482
Tony.Binswanger@cushwake.com
LIC #01861701

Brooks Pedder, SIOR
925.627.2480
Brooks.Pedder@cushwake.com
LIC #00902154

Bo Harkins
925.627.2481
Bo.Harkins@cushwake.com
LIC #01943785

1333 N California Blvd, Suite 500
Walnut Creek, CA 94596
www.cushmanwakefield.com

Cushman & Wakefield Copyright 2020. No warranty or representation, express or implied, is made to the accuracy or completeness of the information contained herein, and same is submitted subject to errors, omissions, change of price, rental or other conditions, withdrawal without notice, and to any special listing conditions imposed by the property owner(s). As applicable, we make no representation as to the condition of the property (or properties) in question.