

# 401 CASTRO STREET

MOUNTAIN VIEW | CALIFORNIA



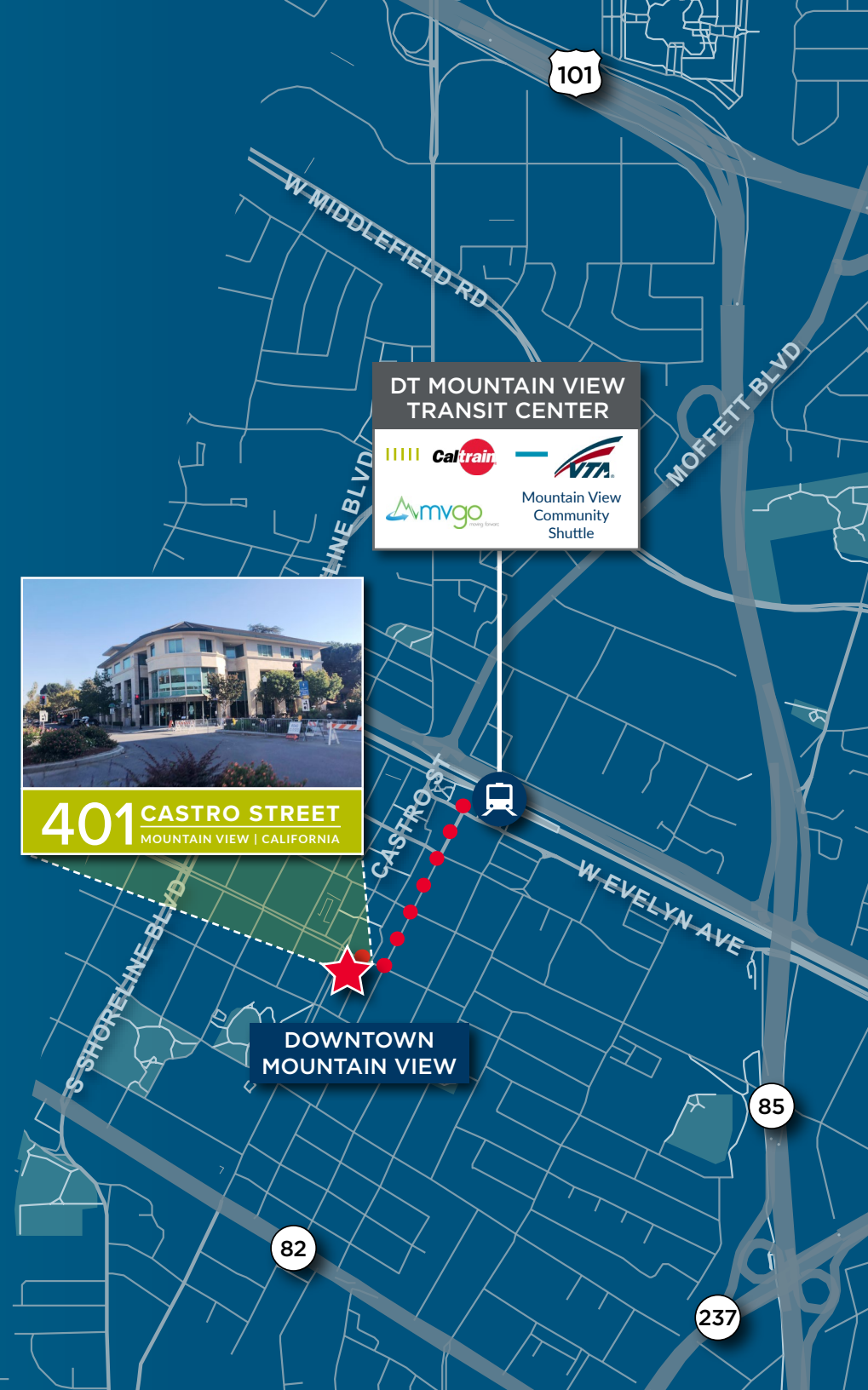
Located in Downtown Mountain View  
**FOR LEASE: ±22,809 SF OFFICE SPACE**

# 401 CASTRO STREET

MOUNTAIN VIEW | CALIFORNIA

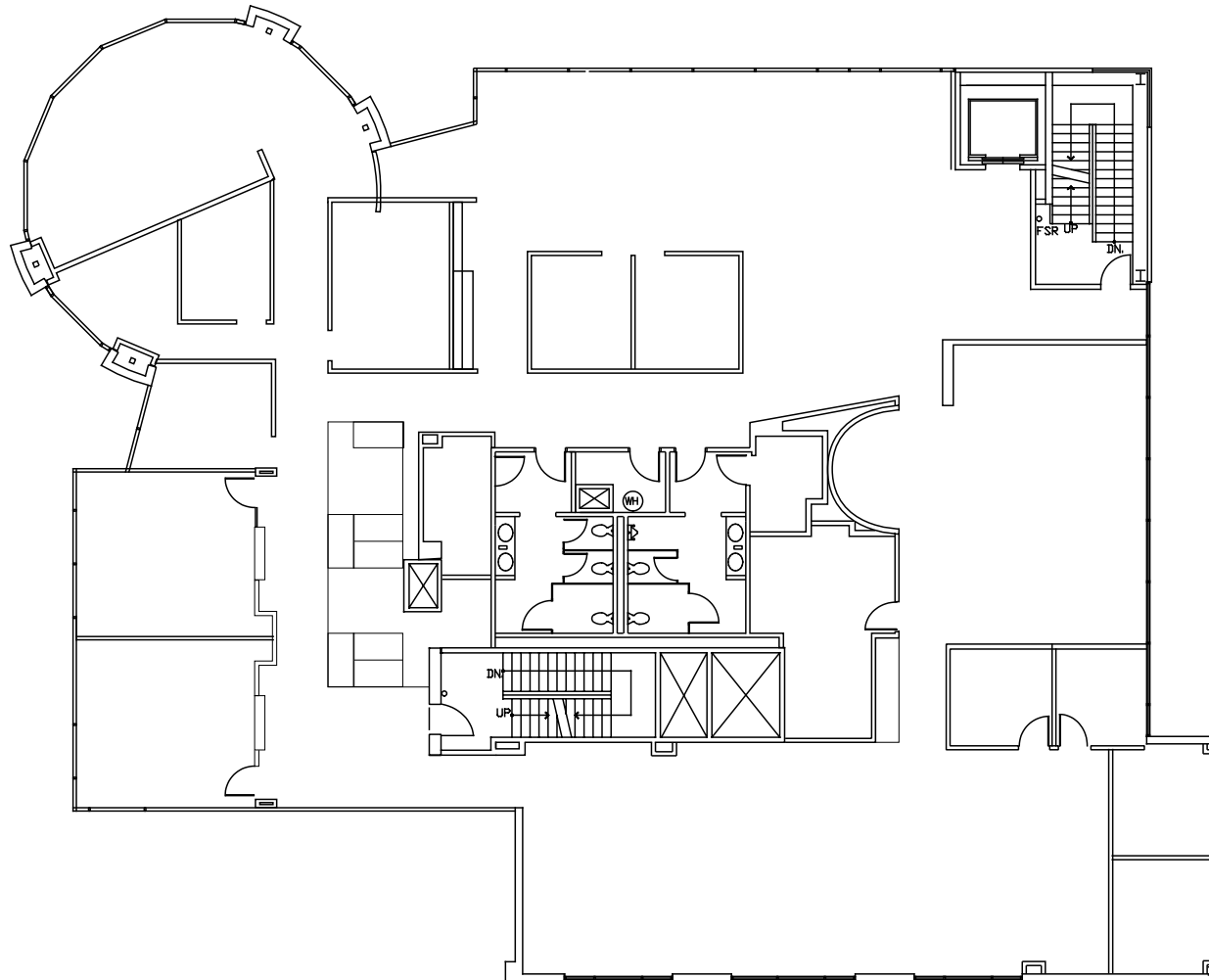
## PROPERTY HIGHLIGHTS

- 3-Story Class “A” Building in the Heart of Downtown Mountain View
- ±22,809 SF Office Space
  - ±9,988 SF - Second Floor
  - ±12,821 SF - Third Floor
- Divisible by Floor
- Ultimate Visibility Corner of Castro at California
- Steel Frame Construction
- 2 Levels of Underground Parking
- Extensive Glassline and Quality Interiors
- Walking Distance to Downtown Amenities, Cal Train, and VTA
- Easy Access to Highways 101, 280, 85 and 237



# 401 CASTRO STREET

MOUNTAIN VIEW | CALIFORNIA

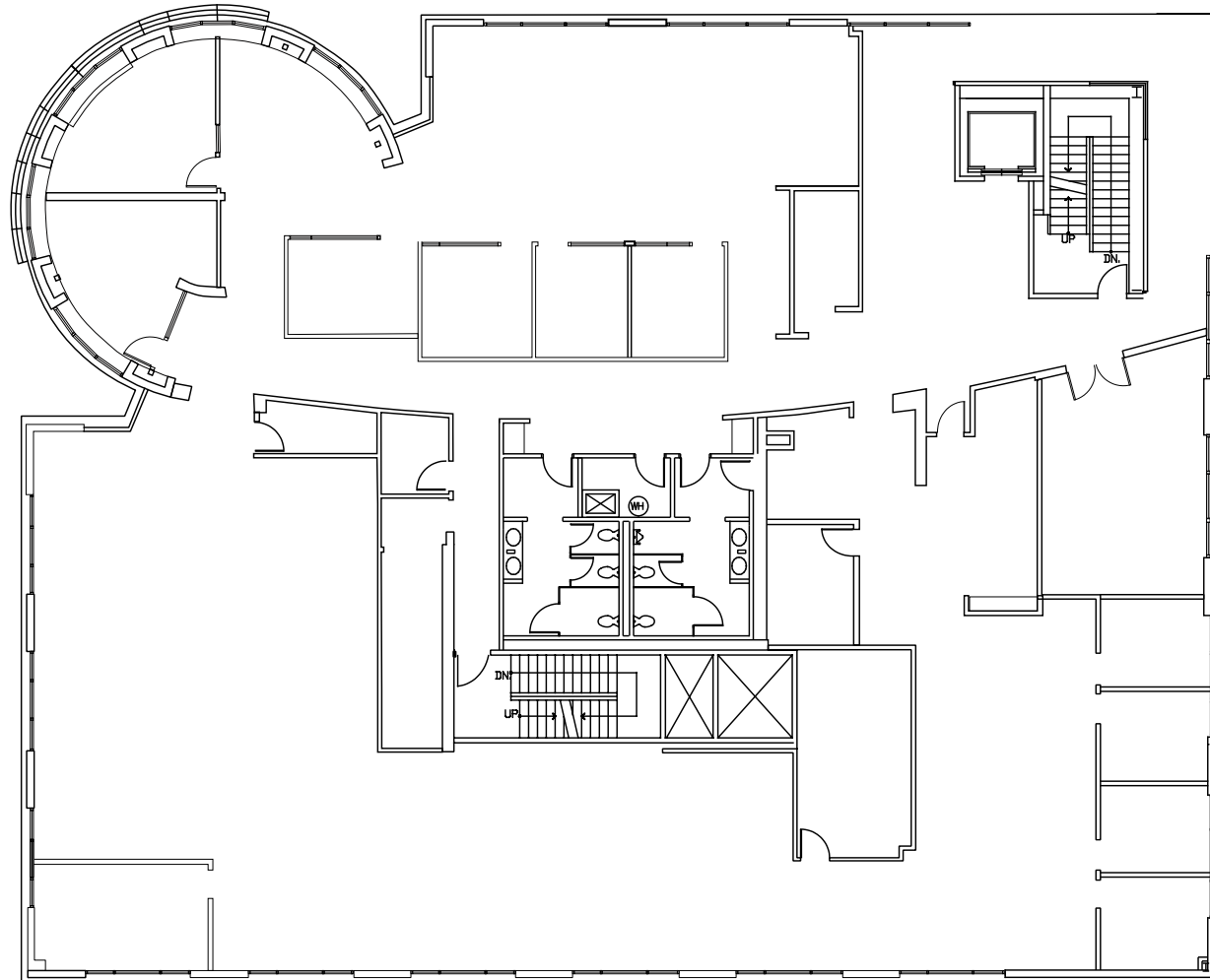


SECOND FLOOR  
±9,988 SF



# 401 CASTRO STREET

MOUNTAIN VIEW | CALIFORNIA



THIRD FLOOR  
±12,821 SF





# 401 CASTRO PHOTOS

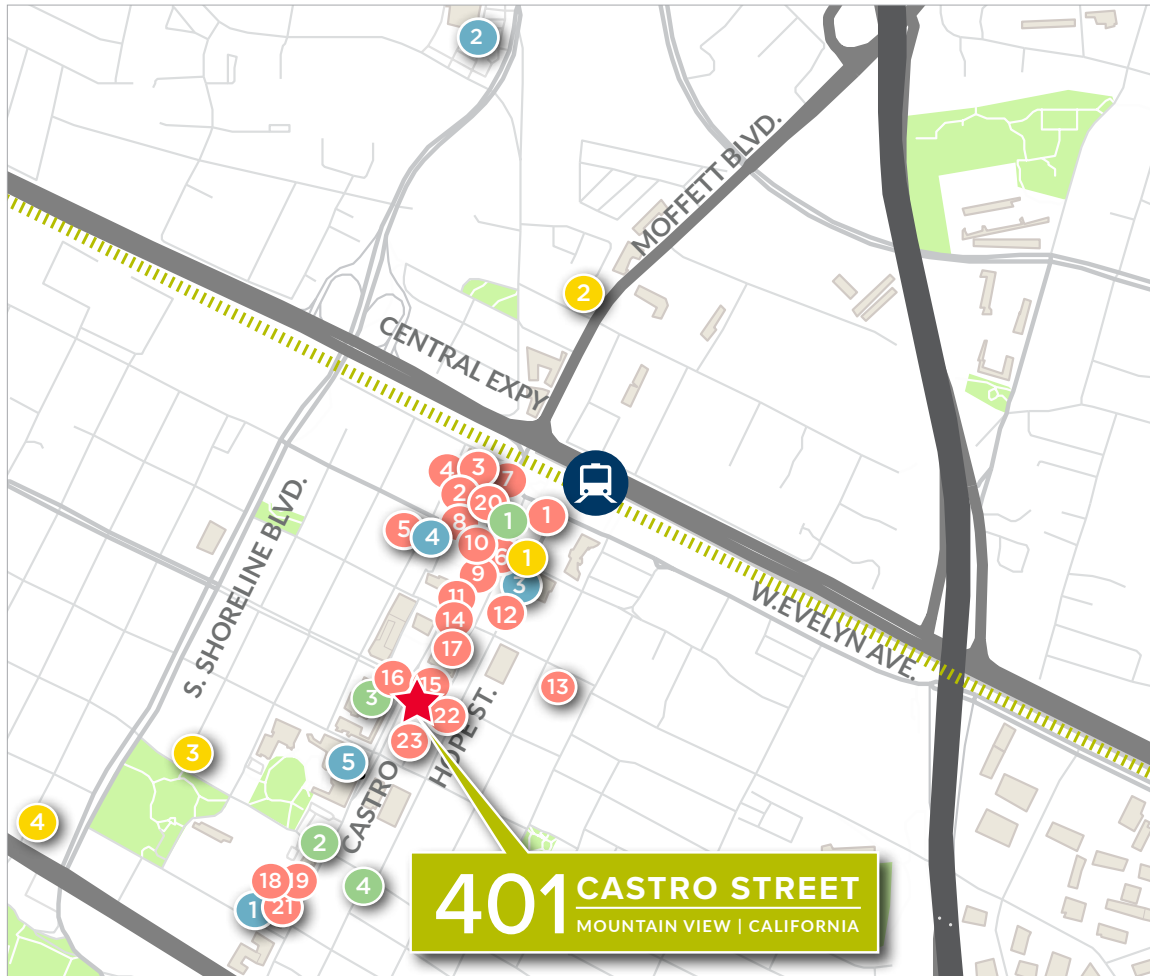
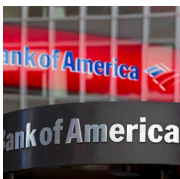




# 401 CASTRO STREET

MOUNTAIN VIEW | CALIFORNIA

## NEARBY AMENITIES



### RESTAURANTS

- 1 Subway
- 2 Doppio Zero
- 3 Vaso Azzurro Ristorante
- 4 Bushido Izakaya
- 5 Chez TJ
- 6 Fiesta Del Mar Too
- 7 Xanh Restaurant
- 8 St. Stephen's Green
- 9 Ristorante Don Giovanni
- 10 Gelato Italian Ice Cream
- 11 Queen House
- 12 Dana Street Roasting Co.
- 13 Sushi Tomi
- 14 La PanotiQ Bakery Café
- 15 Scratch
- 16 Cascal
- 17 Bierhaus
- 18 Le Boulanger
- 19 Starbucks
- 20 Asian Box
- 21 Amici's
- 22 Casa Lupe
- 23 Kirin

### RETAIL

- 1 UPS Store
- 2 Safeway
- 3 US Post Office
- 4 Books Inc
- 5 CVS

### BANKS

- 1 West America Bank
- 2 Wells Fargo
- 3 Bank of America
- 4 Bank of the West

### HOTELS

- 1 150 Hope Street Boutique Lifestyle Hotel (in development)
- 2 Hampton Inn & Suites
- 3 Americas Best Value Inn

- 4 Holiday Inn Express

### TRANSPORTATION





# 401 CASTRO STREET

MOUNTAIN VIEW | CALIFORNIA

## CONNECTIVITY

WALK TO CALTRAIN STATION



DT MOUNTAIN VIEW  
TRANSIT CENTER



DOWNTOWN  
MOUNTAIN VIEW

401 CASTRO STREET  
MOUNTAIN VIEW | CALIFORNIA

•••  0.4 mile walk to  
Caltrain Station





# 401 CASTRO STREET

MOUNTAIN VIEW | CALIFORNIA



**David Hiebert** | Vice Chairman | +1 650 320 0250 | [David.Hiebert@cushwake.com](mailto:David.Hiebert@cushwake.com) | LIC #1189320

**Dan Persyn** | Executive Managing Director | +1 650 320 0255 | [dan.persyn@cushwake.com](mailto:dan.persyn@cushwake.com) | Lic #01184798

525 University Ave, Suite 220 | Palo Alto, California 94301 | main +1 650 852 1200 | fax +1 650 856 1098 | [cushmanwakefield.com](http://cushmanwakefield.com)

[CLICK TO VIEW SITE SPECIFIC COVID - 19 PREVENTION PLAN](#)

©2020 Cushman & Wakefield. All rights reserved. The information contained in this communication is strictly confidential. This information has been obtained from sources believed to be reliable but has not been verified. No warranty or representation, express or implied, is made as to the condition of the property (or properties) referenced herein or as to the accuracy or completeness of the information contained herein, and same is submitted subject to errors, omissions, change of price, rental or other conditions, withdrawal without notice, and to any special listing conditions imposed by the property owner(s). Any projections, opinions or estimates are subject to uncertainty and do not signify current or future property performance.

