



c R c Nationwide

COMMERCIAL REAL ESTATE CONSULTANTS

5005 SOUTH 900 EAST, SALT LAKE CITY, UTAH 84117



Property Information

- Suite 150: 1,327 SF Office
- 24 Hour Access
- Building Security with Cameras
- ADA Accessible
- Elevator
- Private Restroom
- Fiber Available
- Tenant Improvements Available
- Ample Parking: 4/1,000 SF
- Great Central Valley Location
- Easy Access to I-15 and I-215

LEASE RATE: \$11.50/SF NNN

801.617.1700

MATT MANGUM

MATT.MANGUM@CRCNATIONWIDE.COM

Demographics

	1 Mile	3 Mile	5 Mile
Population	18,878	140,636	348,105
Households	8,266	56,167	131,449
Avg. Household Income	\$62,218	\$60,748	\$64,872

Traffic Counts

900 East: 33,090 Annual Average Daily Traffic

Van Winkle Expy: 40,659 Annual Average Daily Traffic

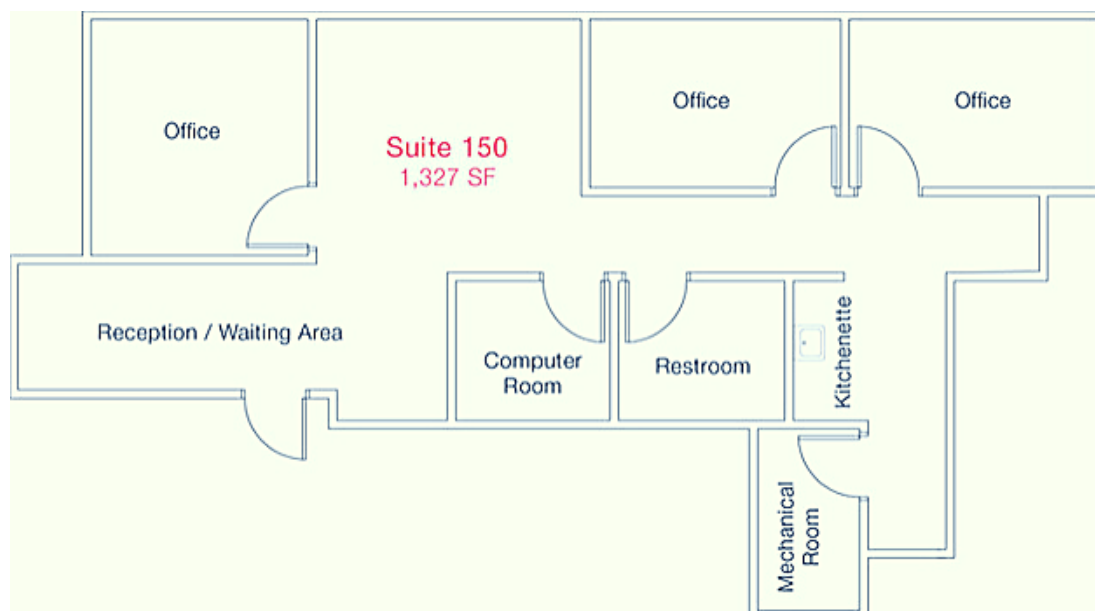
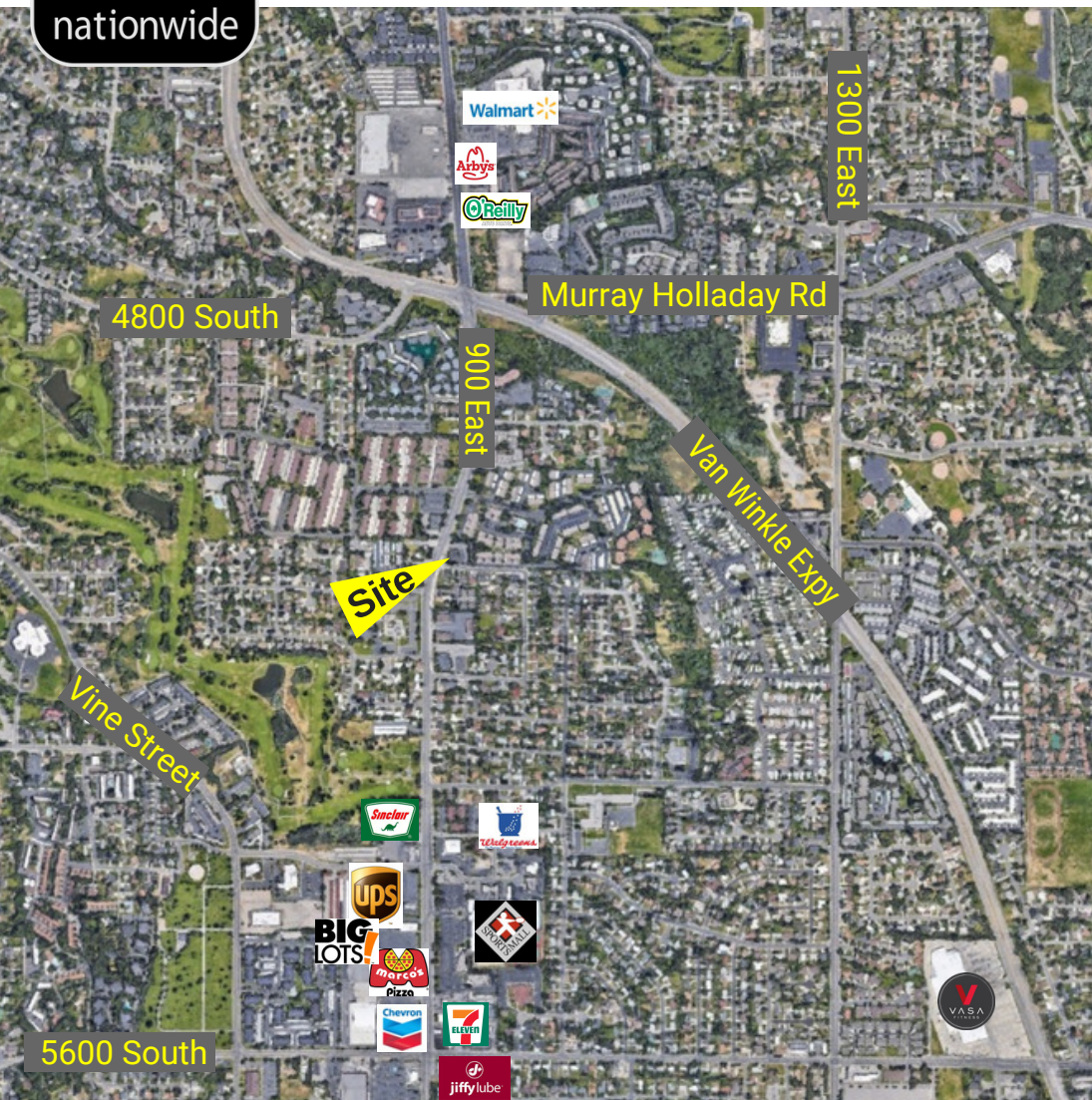


**COSTAR
POWER BROKER AWARD**
TOP FIRM
2010, 2011, 2012, 2013,
2014, 2015, 2016, 2017



c R c N a t i o n w i d e

**5005 SOUTH 900 EAST,
SALT LAKE CITY 84117**



**COSTAR
POWER BROKER AWARD**
TOP FIRM
2010, 2011, 2012, 2013,
2014, 2015, 2016, 2017

801.617.1700

MATT MANGUM

MATT.MANGUM@CRCNATIONWIDE.COM