



Banana Republic Men's on Seattle's Fifth Avenue

1512 5TH AVENUE | SEATTLE WA 98101

“ONCE IN A DECADE” RETAIL OPPORTUNITY

Brynn Estelle Telkamp

| JSH PROPERTIES

| 206.264.0648

FIFTH AVENUE NEIGHBORS

Downtown Seattle is a shoppers paradise with booming growth including new local retailers like Do The Extraordinary to national brands we know and love.

SHOP SIP & SEE



Banana Republic Men's on Seattle's Fifth Avenue

1512 5TH AVENUE | SEATTLE WA 98101

"ONCE IN A DECADE" RETAIL OPPORTUNITY

Brynn Estelle Telkamp

JSH PROPERTIES

206.264.0648



Banana Republic Men's on Seattle's Fifth Avenue

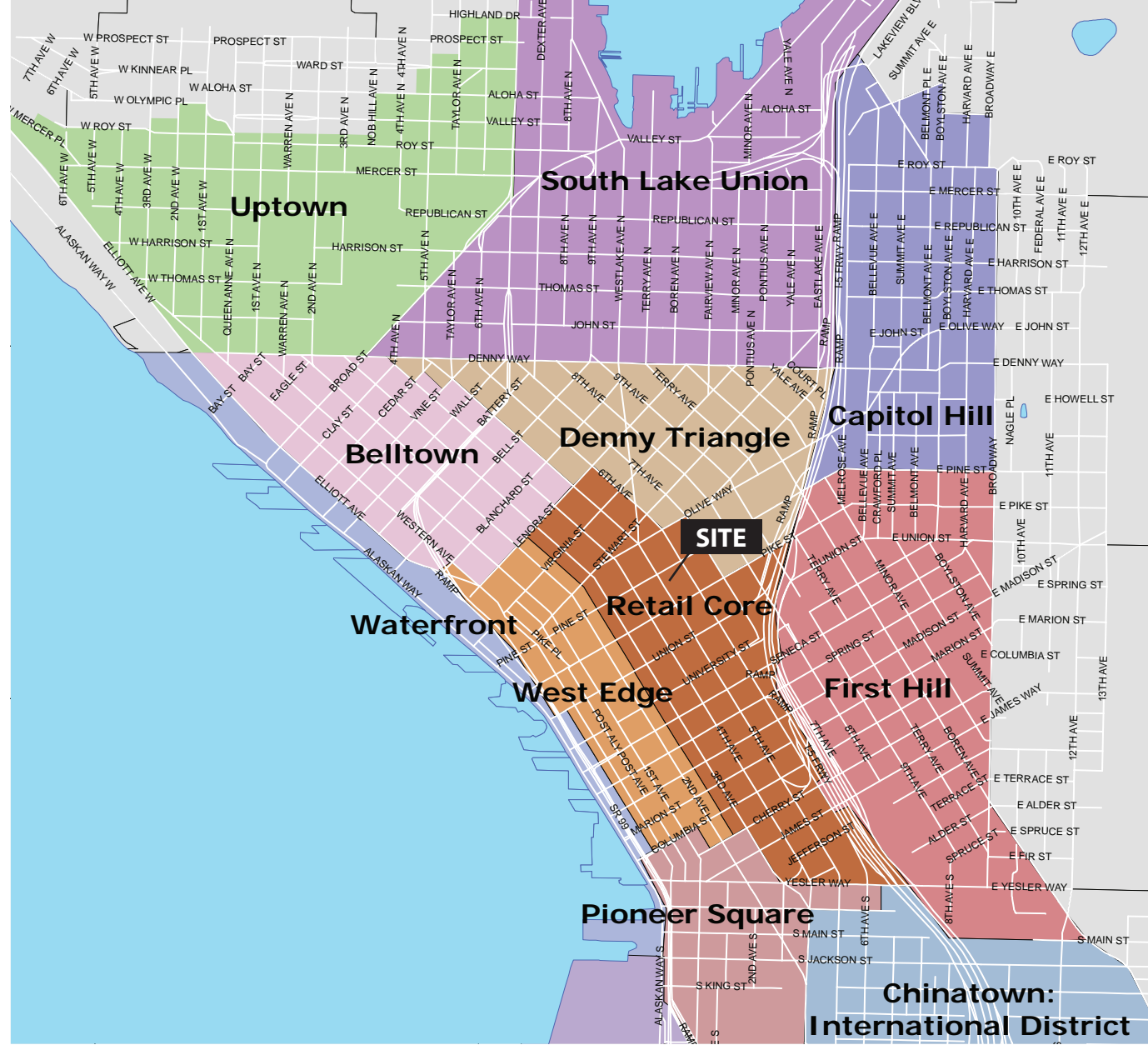
1512 5TH AVENUE | SEATTLE WA 98101

“ONCE IN A DECADE” RETAIL OPPORTUNITY

BANANA REPUBLIC MEN'S on Fifth sits in the Downtown Seattle Retail Core, between Pine Street and Pike Street in the center of it all. Core Retail totals approximately 1.5 million square feet of multi-tenant and 650,000 square feet of Department Store retail. As of October 2016, current at market advertised available retail in all of Downtown Seattle is less than 30,000 sf.

An incredible, once in a decade, opportunity for a Flagship or Expanding retailer as Banana Republic Men's is consolidating with Banana Republic Women's. This space is available for lease during this exclusive Leasing Preview opportunity. The space total 18,252 sf with 9,126 sf of Street Level and 9,126 sf of lower level retail on Seattle's Exclusive Fifth Avenue.

Seattle is the home of over 80 World Headquartered companies and boasts urban neighborhoods with exceptional household incomes.



Banana Republic Men's on Seattle's Fifth Avenue

1512 5TH AVENUE | SEATTLE WA 98101

“ONCE IN A DECADE” RETAIL OPPORTUNITY

RETAIL DISTRICT DETAILS

■ The 1512 Fifth Avenue Retail opportunity for a single user Tenant is 18,252 sf on two floors of 9,126 sf each.

■ Available Q2 2017

■ Asking rent based on shell condition, delivery and size configuration, please call.

■ 2017 NNN ~ \$11.00 psf

■ Fifth Avenue Co-Tenancy

GAP (north side)

Banana Republic Women's (south side)

Madewell

Anthropologie

Urban Outfitters

ALLSAINTS

Pacific Place (Madison Marquette)

Westlake Center (GGP)

Ann Taylor

Nordstrom Store #1

Demographics	10 Miles	5 Miles	3 Miles	1 Mile	Half Mile
Population	1,040,534	421,418	197,908	60,775	418,460
Business Population	806,099	461,995	332,076	211,324	114,816
Education *Bachelor's or Greater	55.65%	62.23%	62.03%	51.13%	57.28%
Tourism	22 Million Visitors to Downtown Seattle Annually				

Banana Republic Men's on Seattle's Fifth Avenue

1512 5TH AVENUE | SEATTLE WA 98101

“ONCE IN A DECADE” RETAIL OPPORTUNITY

 14k Hotel Rooms

 10M Pike Place Market Visitors Annually

 \$408M Annual Business from Cruise Industry

 96k Parking Spaces

 10k+ New Residential Units (Developed or Planned 2013-2014)

 900 New Hotel Rooms, Total Hotel Rooms 14,610

 \$1.4B Downtown Seattle Retail Sales (2013)

 260k Daytime Population

 11.7M+ Square Feet of Business Office Space (Developed or Planned since 2005)

 22M+ Annual Visitors

 \$92k+ Average Household Income

 585k+ Residents in Primary Trade Area

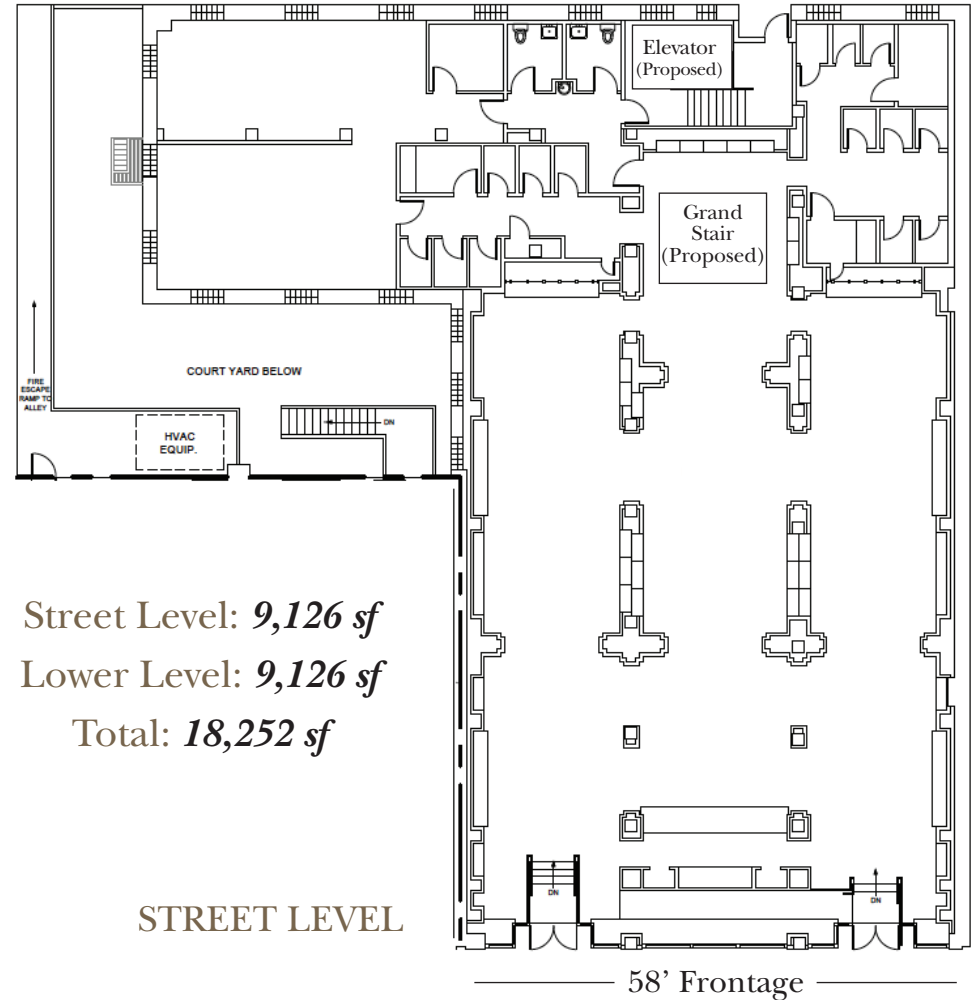
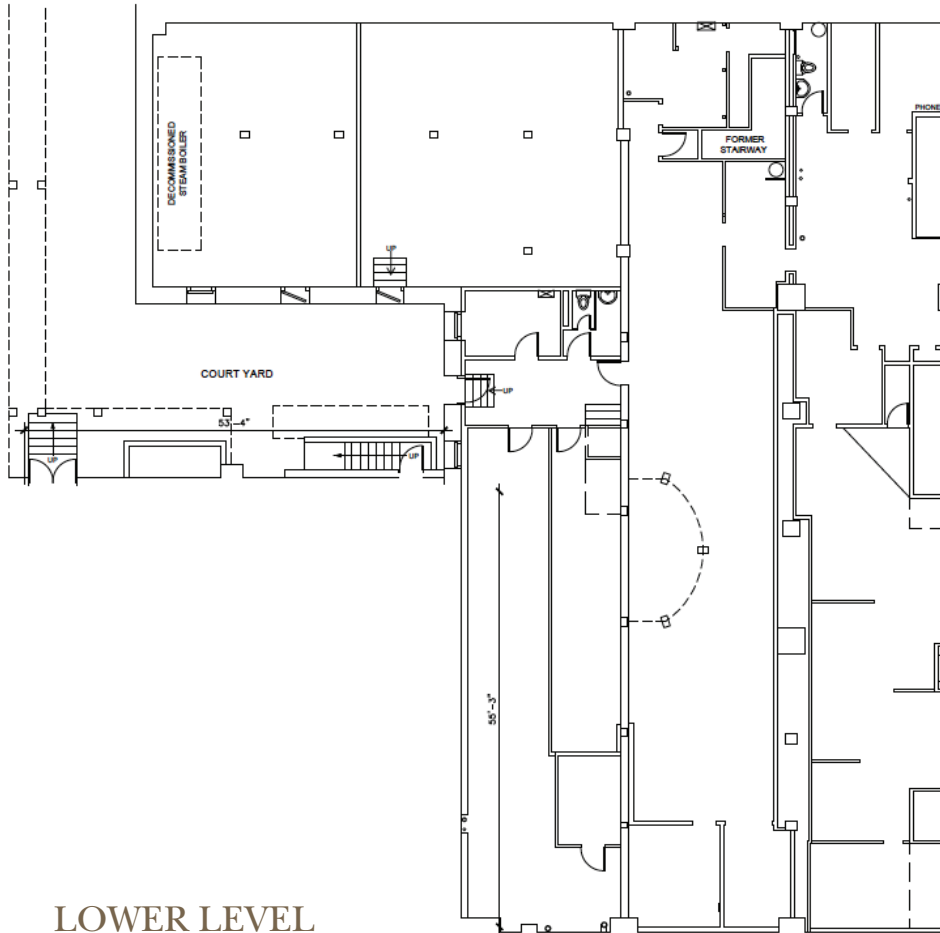
Source: Downtown Seattle Association (DSA)

Banana Republic Men's on Seattle's Fifth Avenue

1512 5TH AVENUE | SEATTLE WA 98101

“ONCE IN A DECADE” RETAIL OPPORTUNITY

SPACE AS BUILT PLAN



Banana Republic Men's on Seattle's Fifth Avenue

1512 5TH AVENUE | SEATTLE WA 98101

"ONCE IN A DECADE" RETAIL OPPORTUNITY

INTERIOR RETAIL SPACE



Banana Republic Men's on Seattle's Fifth Avenue

1512 5TH AVENUE | SEATTLE WA 98101

"ONCE IN A DECADE" RETAIL OPPORTUNITY

Seattle World Headquartered Companies



SEATTLE

by the numbers ...

- 🔒 NUMBER ONE City to find a job
- 🔒 NUMBER TWO Best place in the country to own rental property
(All Property Management, 2015)
- 🔒 NUMBER THREE Highest median salary in the country
(Forbes, 2015)
- 🔒 NUMBER FOUR Richest city in the U.S.
(USA Today, 2015)
- 🔒 NUMBER FIVE Fastest growing city in the U.S.
(Forbes 2015)
- 🔒 NUMBER SIX Best city for Millennials in America
(Niche, 2015)
- 🔒 NUMBER SEVEN Best city for employee satisfaction
(WalletHub, March 2014)
- 🔒 NUMBER EIGHT Best walkable city *(Redfin, 2015)*
- 🔒 NUMBER NINE “Greenest” city in America *(NerdWallet, 2015)*
- 🔒 NUMBER TEN Best city for singles *(NerdWallet, 2015)*

Banana Republic Men’s on Seattle’s Fifth Avenue

1512 5TH AVENUE | SEATTLE WA 98101

“ONCE IN A DECADE” RETAIL OPPORTUNITY



Banana Republic Men's on Seattle's Fifth Avenue

1512 5TH AVENUE | SEATTLE WA 98101

“ONCE IN A DECADE” RETAIL OPPORTUNITY

Brynn Estelle Telkamp

| JSH PROPERTIES

| 206.264.0648



LEASING

Brynn Estelle Telkamp

Managing Broker

JSH PROPERTIES, INC.

Brynn@jshproperties.com

206.264.0648 o

206.650.8595 m