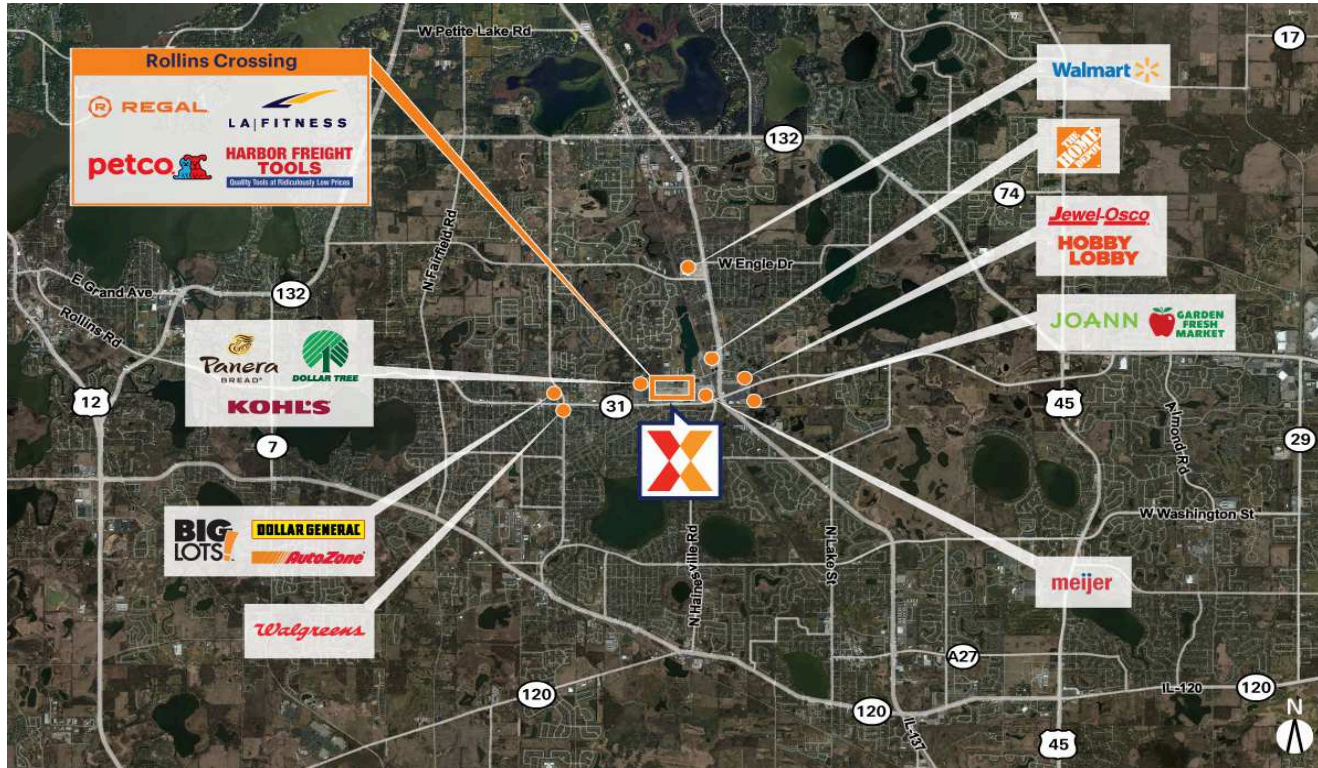


Rollins Crossing

Chicago-Naperville-Elgin, IL-IN-WI

42.381, -88.071

400-550 East Rollins Road | Round Lake Beach, IL 60073-1336



Center Size: 192,913 SF



Demographics

	1 Mile	3 Mile	5 Mile
	12,988	75,399	145,289
	3,830	24,208	49,149
	\$85,883	\$87,987	\$96,513

Features a diverse tenant mix of national retailers including LA Fitness, Regal Cinemas, Harbor Freight Tools & Petco

Strong visibility and accessibility from Route 31, the primary east/west arterial

Retail space surrounded by a population of 76,000+ with average household income of \$84,000+ within 3 miles

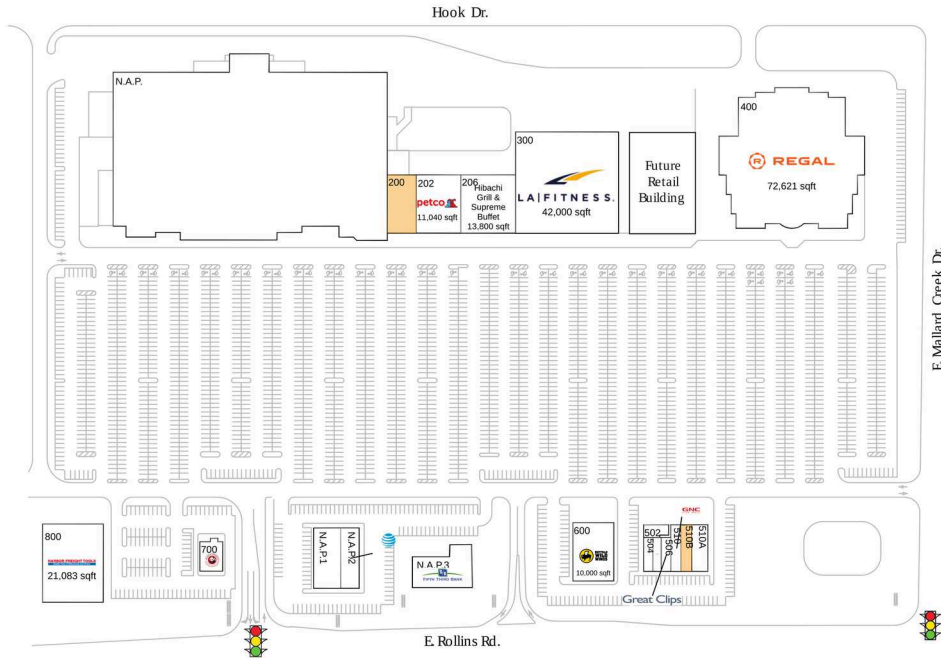
Pad site available for up to 30,000 SF

Rollins Crossing

Chicago-Naperville-Elgin, IL-IN-WI

42.381, -88.071

400-550 East Rollins Road | Round Lake Beach, IL 60073-1336



Available Space

200	7,200 SF
510B	3,499 SF

Current Retailers

N.A.P.	N.A.P.	0 SF
N.A.P.1	Dental Care	0 SF
N.A.P.2	AT&T	0 SF
N.A.P.3	Fifth Third Bank	0 SF
202	Petco	11,040 SF
206	Hibachi Grill & Supreme Buffet	13,800 SF
300	LA Fitness	42,000 SF
400	Regal Cinemas	72,621 SF
502	Armed Forces Recruiting	1,338 SF
504	Frostie Bites	1,310 SF
505	Check 'N Go	1,200 SF
506	Great Clips	1,400 SF
510	GNC	1,870 SF
510A	Jersey Mike	1,758 SF
600	Buffalo Wild Wings	10,000 SF
700	Panda Express	2,459 SF
800	Harbor Freight Tools	21,083 SF



4155