



Available Retail/Office For Sale  
**5220 Albemarle Rd**

Charlotte, NC 28212

## ABOUT

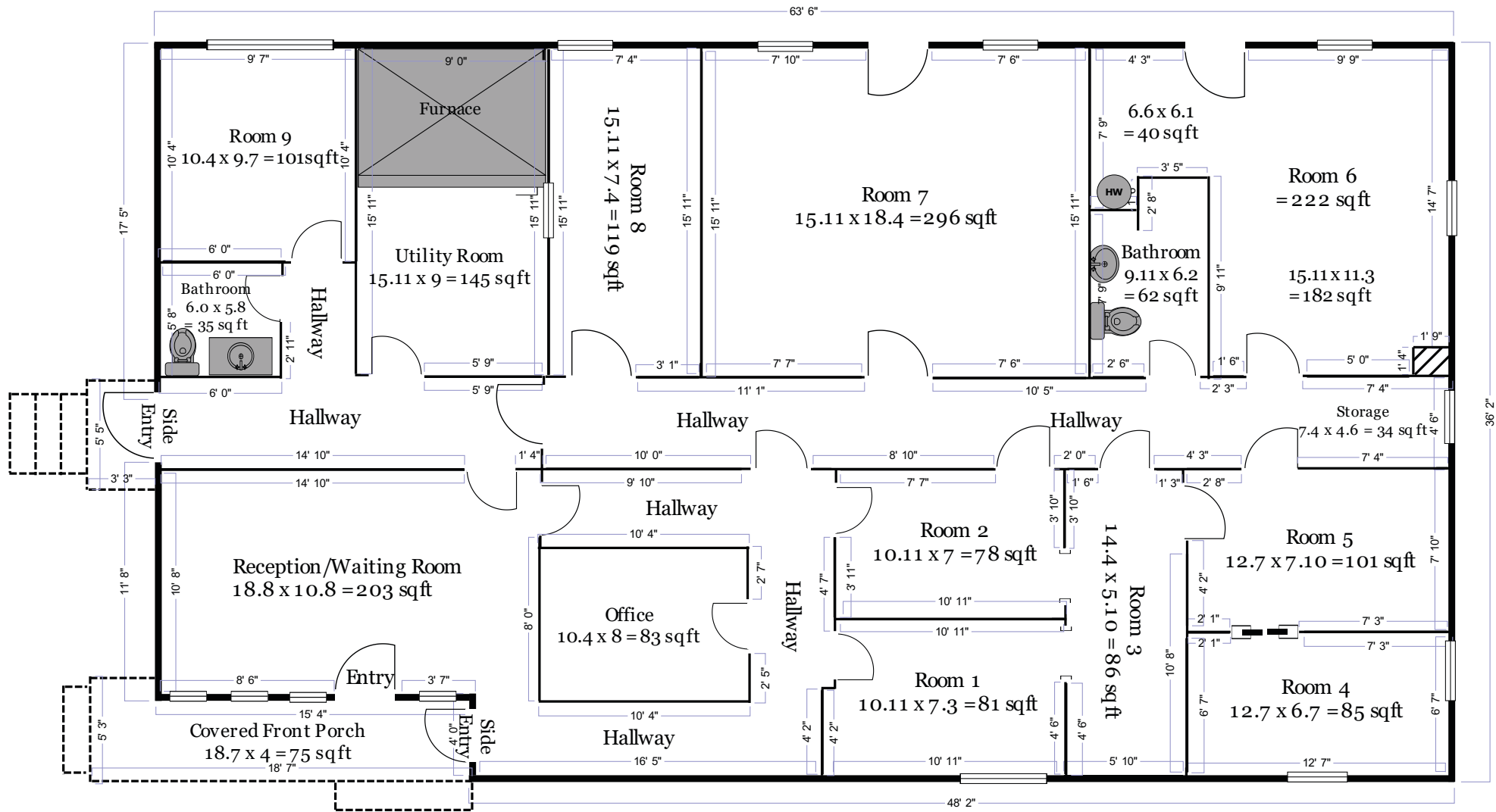
Flexible space located near the lighted intersection of Albemarle Road and North Sharon Amity Road. With more than 250 feet of frontage on Albemarle Road, this +/- 2,208 SF corner lot building is available for sale. Options include retail or office in the existing building or demolition and redevelopment of the site.

## PROPERTY DETAILS

- +/- 2,208 SF
- .66 Acres
- Zoning: B1
- More than 250 ft. of Frontage on Albemarle Road
- Corner Lot
- Sale Price: \$450,000



# FLOOR PLAN



Total - 2,316 SF

Heated - 2,241 SF

Additional - 75 SF



RUSTY GIBBS | The Nichols Company | (O) 704.373.9797 | (F) 704.373.9798  
Rusty@thenicholscompany.com | www.thenicholscompany.com | 1204 Central Avenue, Suite 201 Charlotte, NC 28204

This information has been obtained from sources believed to be reliable. While we do not doubt its accuracy, we have not verified it and make no guarantee, warranty or representation to independently confirm its accuracy and completeness.