



SOUTHCENTER
OFFICE FOR LEASE



320 BUILDING

320 ANDOVER PARK EAST | TUKWILA, WA

Chuck Wiegman
425.283.5477
chuckw@jshproperties.com

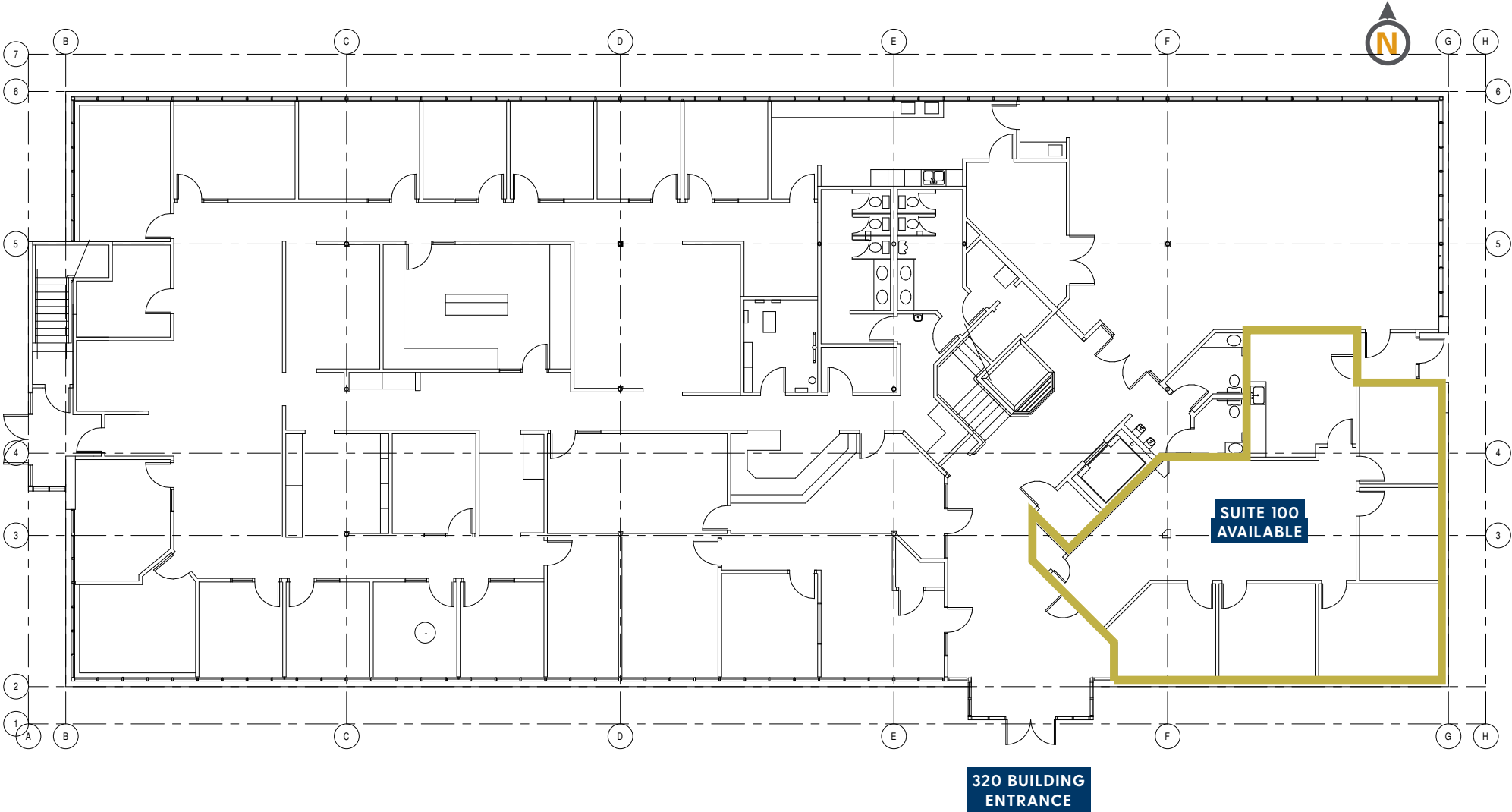
 JSH | PROPERTIES, INC.

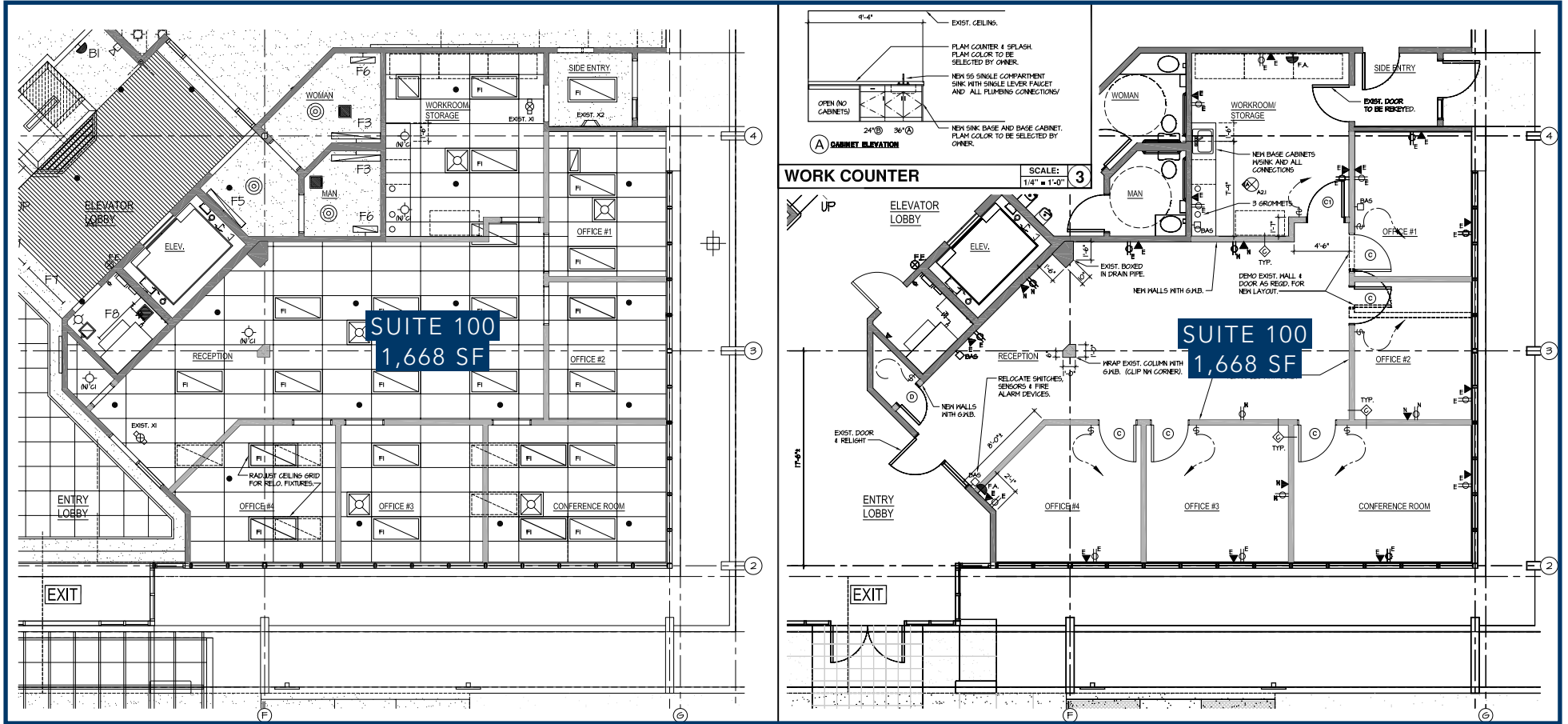
14900 INTERURBAN AVE. SO. SUITE 130 | SEATTLE, WA 98168
425.283.5477 | WWW.JSHPROPERTIES.COM

320 BUILDING FLOOR PLAN / AS-BUILTS

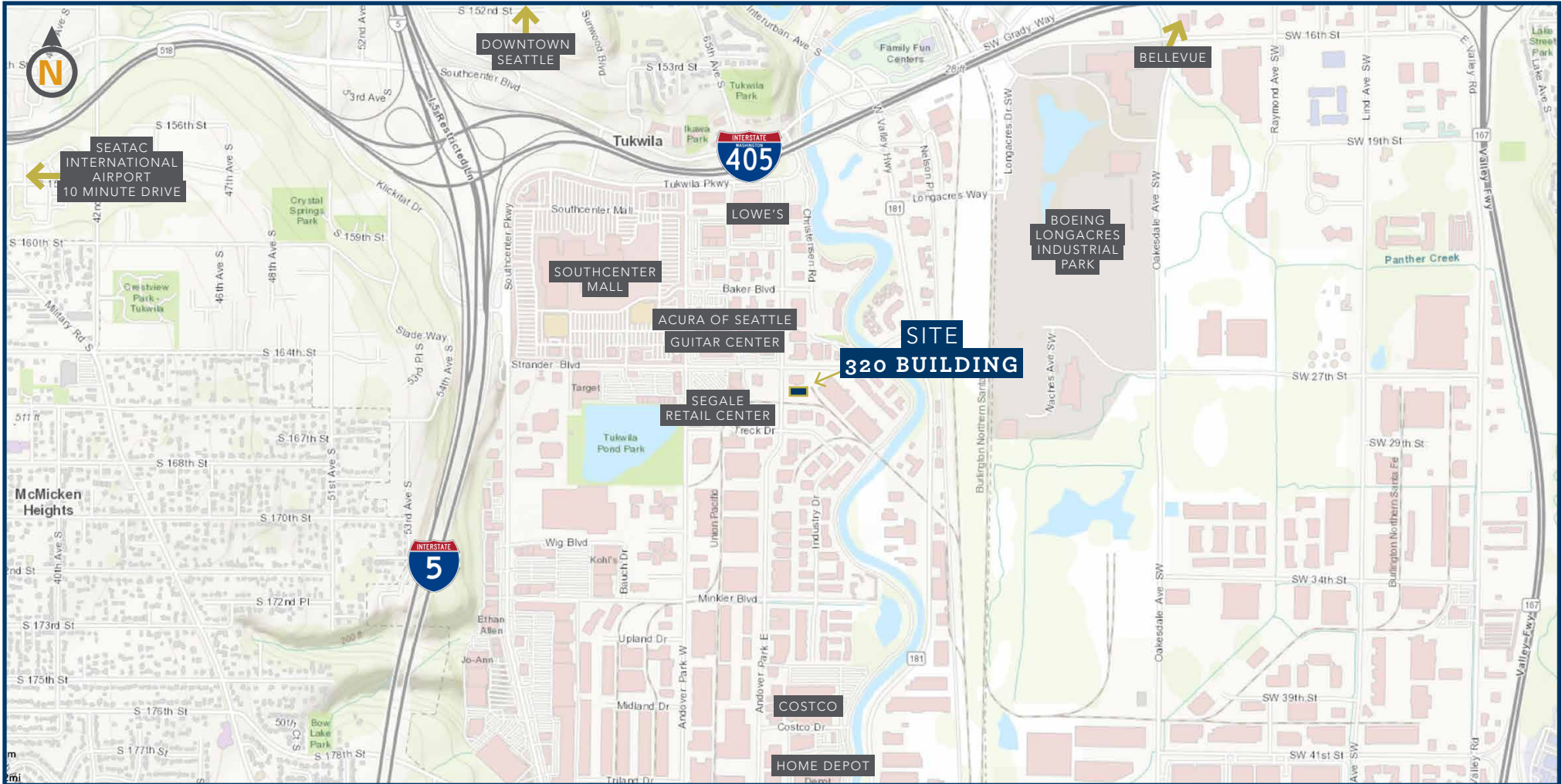
AVAILABLE	RSF	RENT	NNN	COMMENTS
SUITE 100	1,668	\$24.00 full service	\$0.00	Right off the lobby with 5 privates, a kitchen area and open office.

First floor





Located right off the lobby with 5 private offices, a kitchen area and open office space.



Excellent Southcenter location — near shopping, medical and professional offices.