

## Fairway Center

14220-14240  
Interurban Avenue South  
Tukwila, WA

High Tech  
Flex-Office Space

21,960 SF (7,696 office)

Available 6/1/18

2 grade-level doors

Excellent location provides  
access to I-405 and I-5 and is 5  
minutes to SeaTac Airport

Metro bus stop adjacent to  
property and minutes to the  
Link Light Rail station on  
International Blvd

Fitness center / showers onsite

Abundant free parking

\$0.75/month, NNN on first floor,  
\$24.00 RSF/year full service on  
second floor



### Location



### Contact

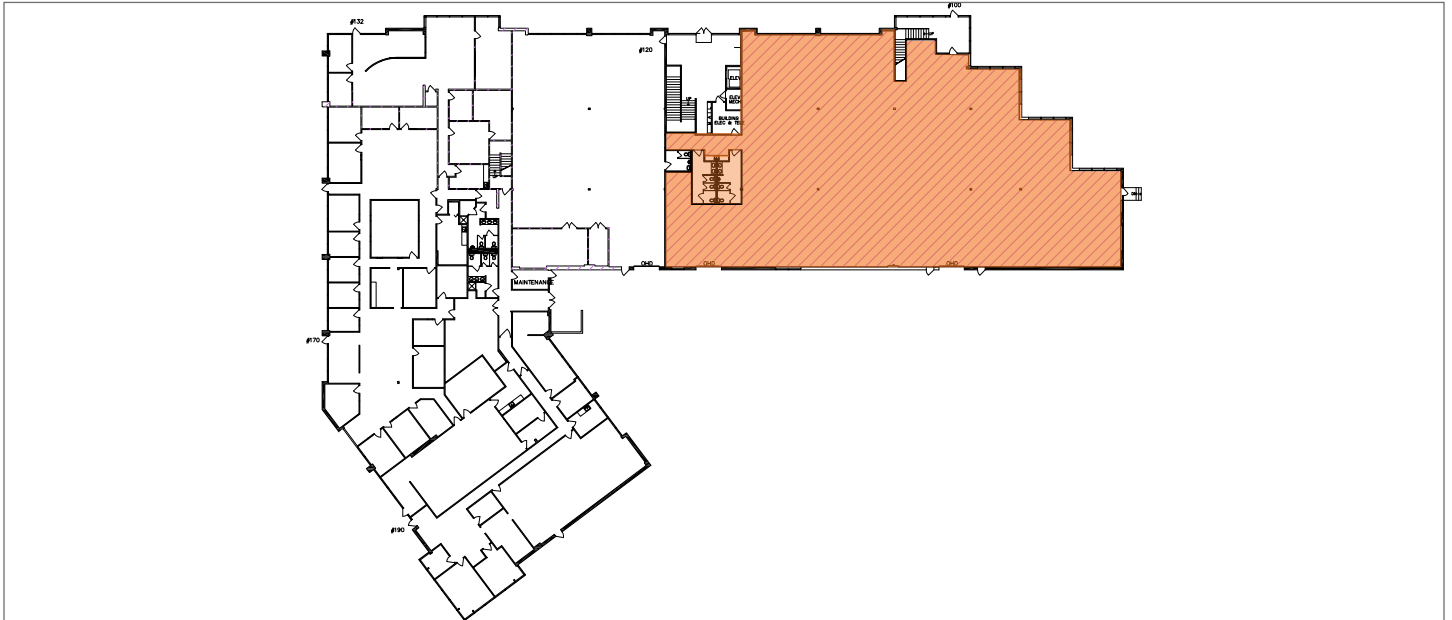
**Brian Clapp**  
206.248.7316  
bclapp@kiddermathews.com

**Matt Wood, SIOR**  
206.248.7306  
mwood@kiddermathews.com

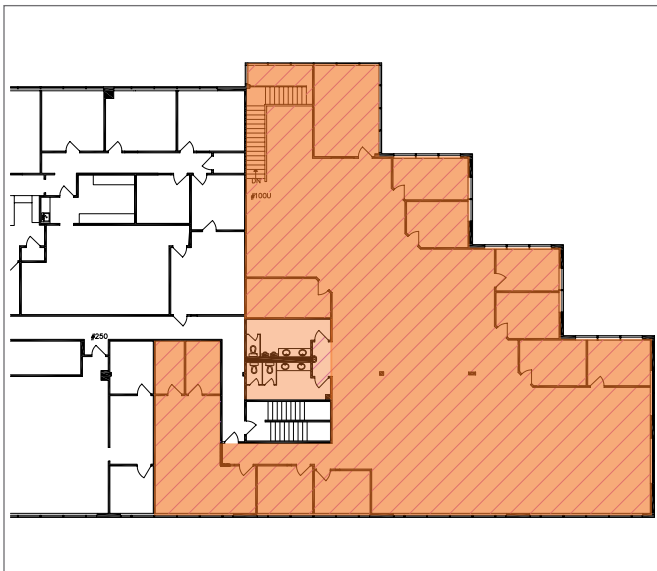
**Todd Battison**  
206.296.9621  
toddb@kiddermathews.com

## Fairway Center

First Floor Flex Space - 14,264 RSF



Second Floor Office Space - 7,696 RSF



Site Plan



### Contact

**Brian Clapp**  
206.248.7316  
bclapp@kiddermathews.com

**Matt Wood, SIOR**  
206.248.7306  
mwood@kiddermathews.com

**Todd Battison**  
206.296.9621  
toddb@kiddermathews.com



## Fairway Center



### Contact

**Brian Clapp**  
206.248.7316  
bclapp@kiddermathews.com

**Matt Wood, SIOR**  
206.248.7306  
mwood@kiddermathews.com

**Todd Battison**  
206.296.9621  
toddb@kiddermathews.com