

1205

CHRYSLER DRIVE

MENLO PARK, CALIFORNIA

OFFICE & WAREHOUSE IN MENLO GATEWAY

±39,150 SF Available



Newmark
Knight Frank

MIKE COURSON 650.688.8527 mcourson@ngkf.com CA RE License# 01358961
JACK TROEDSON 650.688.8520 jtroedson@ngkf.com CA RE License# 00833129
CARTER LYMAN 650.688.8559 carter.lyman@ngkf.com CA RE License# 02067725

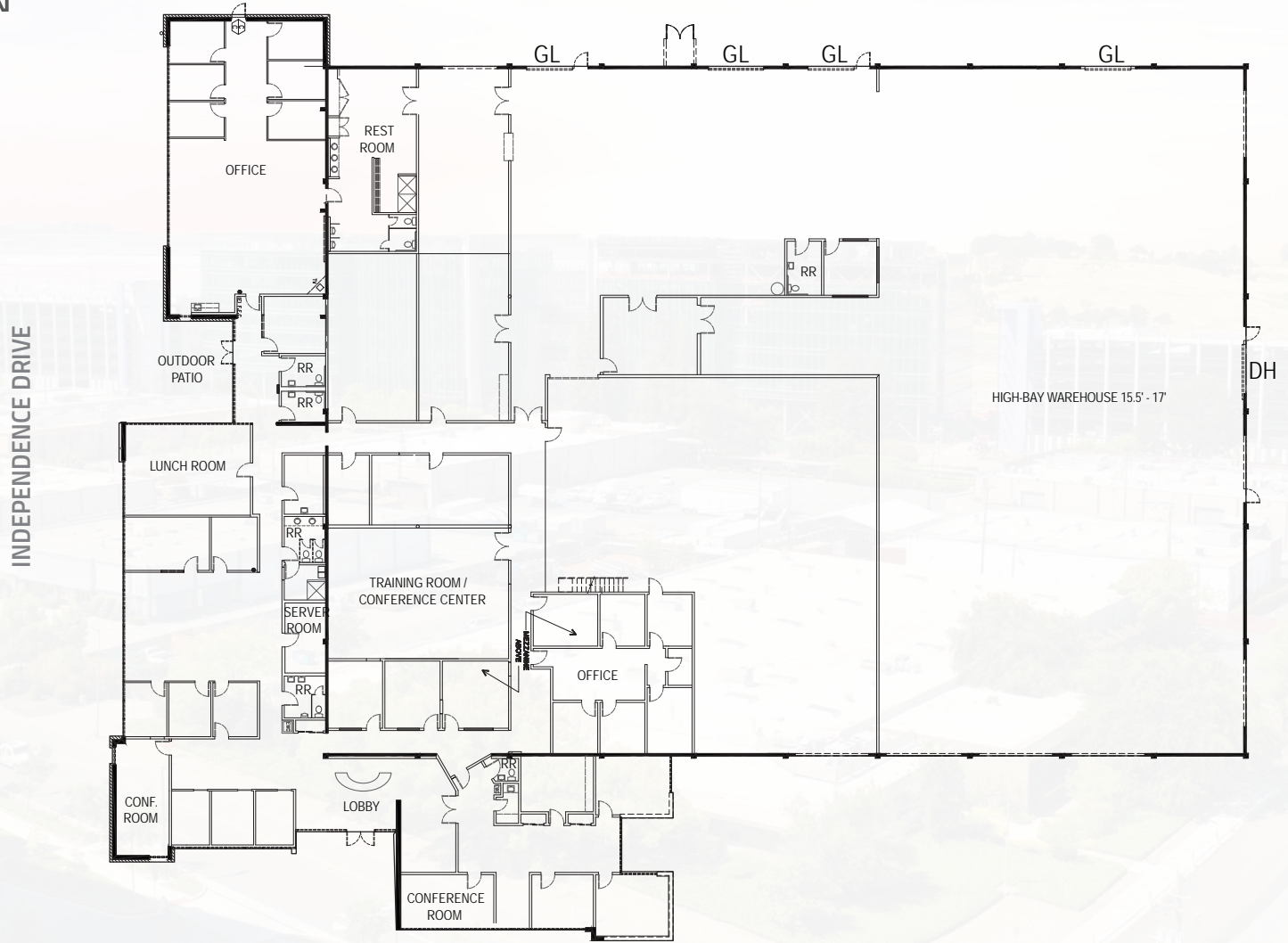
1205

CHRYSLER DRIVE
MENLO PARK, CALIFORNIA



- » ±39,150 SF Available
- » Freestanding Corner Building Located in the Heart of Facebook's New Menlo Gateway Campus
- » ±35% Office, ±65% Industrial/Manufacturing
- » Large Lunch Room with Outdoor Patio
- » Multiple Restrooms & Shower Facilities
- » On-Site Parking
- » 4 Grade Level Doors
- » 1 Covered Dock High Loading Door
- » 15.5' - 17' Clear Height
- » Excellent Access to both East Bay and Peninsula via Highway 101 and Dumbarton Bridge
- » Available Now

FLOOR PLAN



1205

CHRYSLER DRIVE

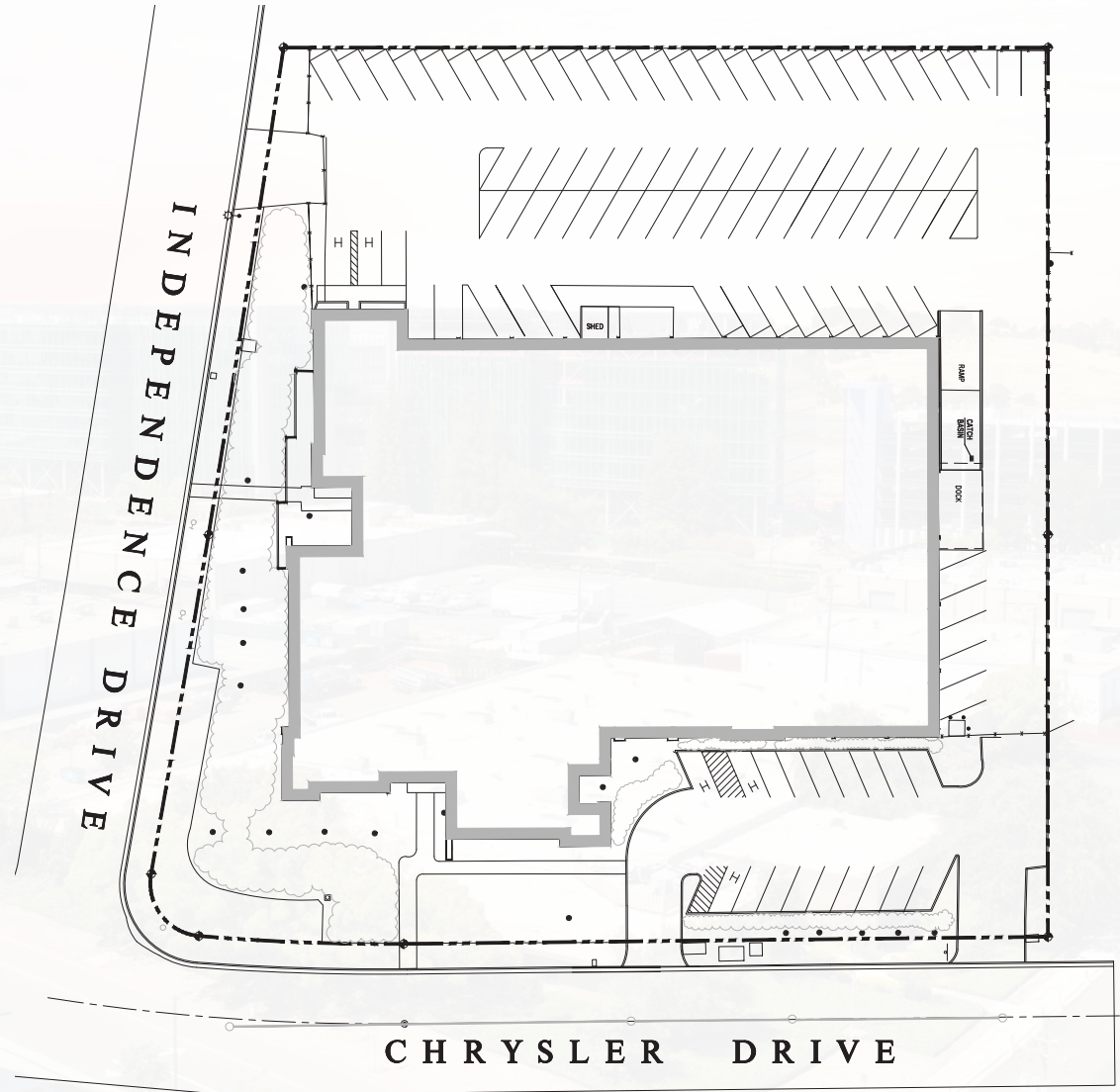
MENLO PARK, CALIFORNIA

SITE PLAN



MIKE COURSON 650.688.8527 | JACK TROEDSON 650.688.8520 | CARTER LYMAN 650.688.8559

SITE PLAN



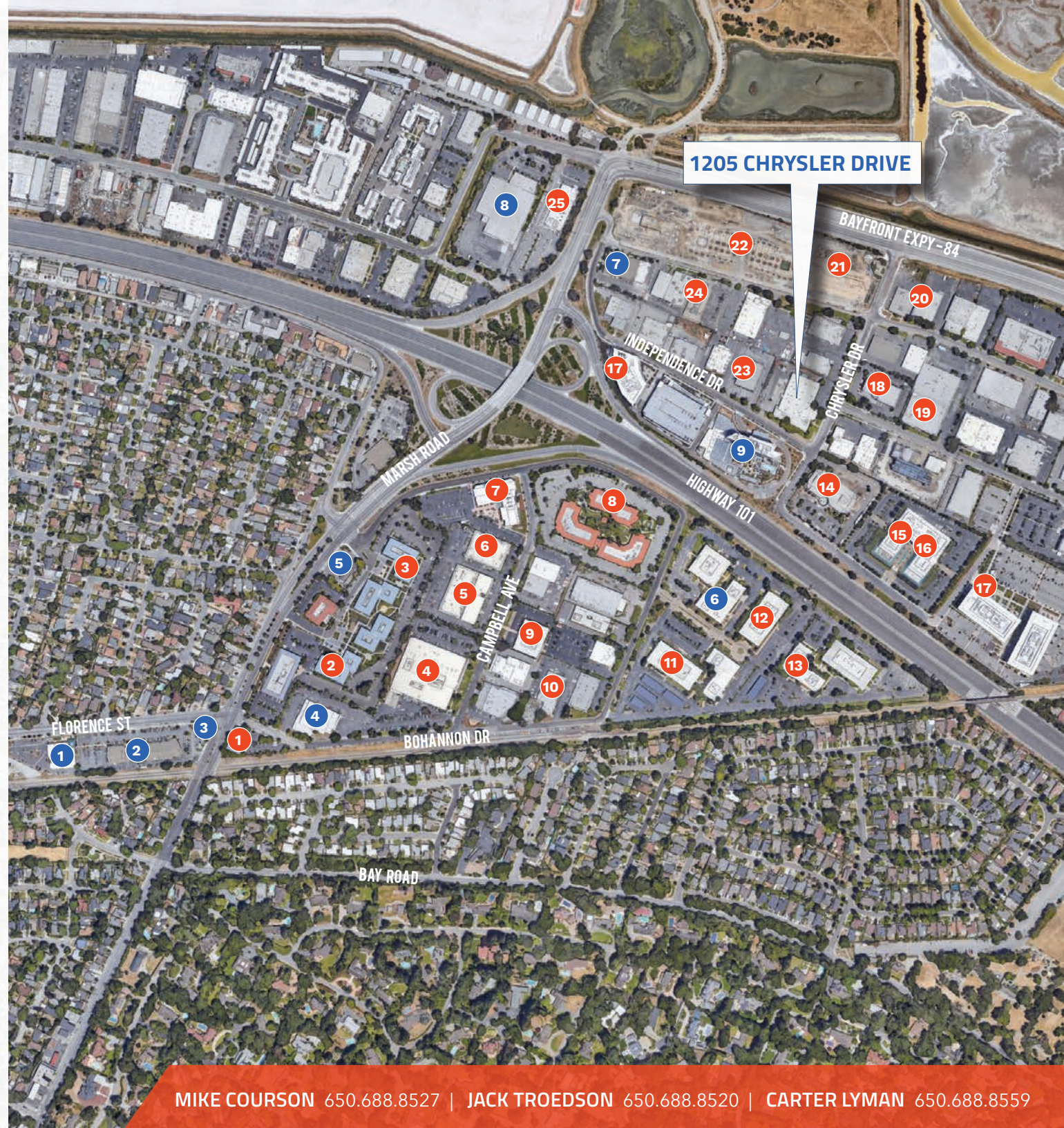
AMENITIES MAP

NEARBY SERVICES

1. Delucchi's Market
2. Freewheel Brewing Company
3. Starbucks
4. U.S. Post Office
5. Chevron Menlo Park
6. Lee's Deli
7. Palo Alto Baking Company
8. FedEx Ship Center
9. Hotel Nia

NEIGHBORING TENANTS

1. Kramer Levin Naftalis Frankel
2. Orrick, Herrington & Sutcliffe LLP
3. Kilpatrick Townsend
4. Abbott Vascular
5. EarLens Corporation
6. Memry Corporation
7. Hogan Lovells US LLP
8. Latham & Watkins LLP
9. Kepsry
10. Apria Healthcare
11. Boardvantage
12. E Trade Financial
13. Stanford
14. Facebook
15. Corcept Therapeutics
16. Exponent Inc
17. Facebook
18. SPACES - Menlo Park
19. InfoIMAGE, Inc.
20. Sparta Science
21. Facebook
22. Facebook
23. Arrinex, Inc.
24. Carr & Ferrell LLP
25. Quicken, Inc.



1205

CHRYSLER DRIVE

MENLO PARK, CALIFORNIA



245 Lytton Avenue, Suite 150, Palo Alto, CA 94301

The distributor of this communication is performing acts for which a real estate license is required. The information contained herein has been obtained from sources deemed reliable but has not been verified and no guarantee, warranty or representation, either express or implied, is made with respect to such information. Terms of sale or lease and availability are subject to change or withdrawal without notice. 19-0723.01/20

 **Newmark
Knight Frank**

MIKE COURSON 650.688.8527 mcourson@ngkf.com CA RE License# 01358961
JACK TROEDSON 650.688.8520 jtroedson@ngkf.com CA RE License# 00833129
CARTER LYMAN 650.688.8559 carter.lyman@ngkf.com CA RE License# 02067725